

---

NOTES

1. This drawing must not be used for construction or installation purposes unless expressly stated.
2. Do NOT scale off this drawing. Always work to noted dimensions.
3. All dimensions must be verified on site before completing shop drawings or setting out the work.
4. This drawing is to be read in conjunction with the equipment schedule and the equipment installation schedule as prepared by other team.
5. This drawing is to be read in conjunction with architectural and structural engineer's drawings and final setting out drawings.
6. ALL FINAL SETTING OUT OF LIGHTING & FIRE ALARMS TO A10M313 DRAWINGS.
7. SCENE SET INTERFACE TO BE PROVIDED FROM LIGHTING CONTROL SYSTEM TO CRESTON AV SYSTEM TO ALLOW FOR INTEGRATED CONTROL WITHIN MEETING ROOMS.
8. WALL-MOUNTED TOUCH SCREEN LIGHTING CONTROL.
9. 2 No. CIRCUITS TO ALLOW COLUMN LIGHT TO BE CONTROLLED INDEPENDENTLY.
10. SMOKE DETECTION IN CEILING VOID WITH REMOTE INDICATOR THROUGH CEILING.

3	CONSTRUCTION ISSUE REDAWN TO SUIT ARCHITECTS BARRASOLS OMITTED LIGHTING FOR CLARITY)	27.11.08
2	CONSTRUCTION ISSUE WC LIGHTING REVISED/ADDED	16.10.08
1	CONSTRUCTION ISSUE REDAWN TO SUIT ARCHITECTS NEW LAYOUT	01.10.08
2	CONSTRUCTION ISSUE	23.07.08
1	TENDER ISSUE	04.07.08
Design	Description	Date
		Checked

# atelier ten

client: VW Group (UK) Ltd.

ATMB13 Architect

Audi West London – FIT OUT

Title \_\_\_\_\_

LIGHTING & FIRE ALARM  
SERVICES

CAD file name  
June 2008  
Date

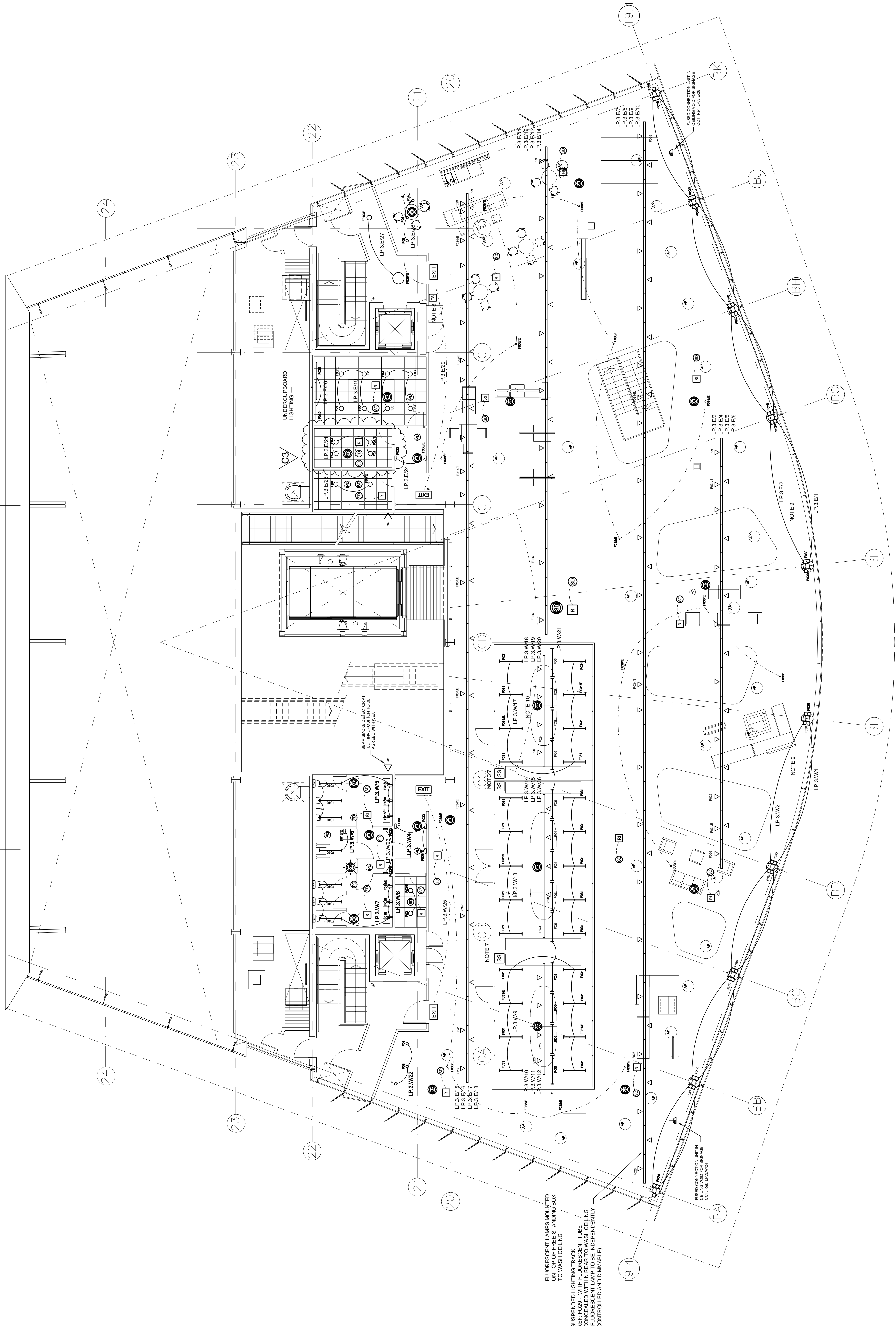
Scale/s  
1:100 (A1)

Drawn by  
cad  
Designed by  
JWG/WL

Drawing No. Z330-ES-301 Rev. 3

Atelier Ten 19 Perseverance Works 38 Kingsland Road London E2 8DD  
Telephone: +44 (020) 7749 5950 Fax: +44 (020) 7729 5388  
e-mail: [A10@atelierenn.com](mailto:A10@atelierenn.com) [www.atelierten.com](http://www.atelierten.com)

# CONSTRUCTION ISSUE



SUSPENDED LIGHTING TRACK  
REF. F029 - WITH FLUORESCENT TUBE  
CONCEALED WITHIN REAR TO WASH CEILING  
FLUORESCENT LAMP TO BE INDEPENDENTLY  
CONTROLLED AND DIMMABLE)

—

BA

/ / / / /