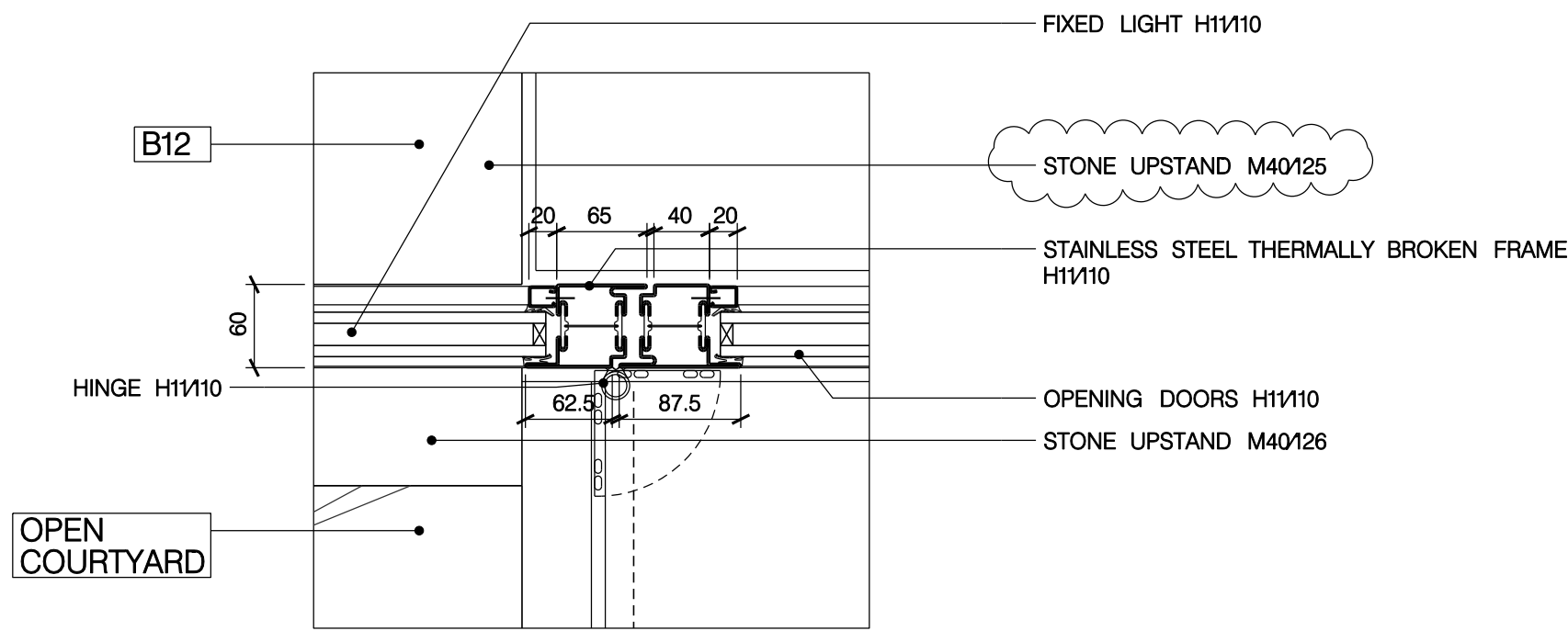
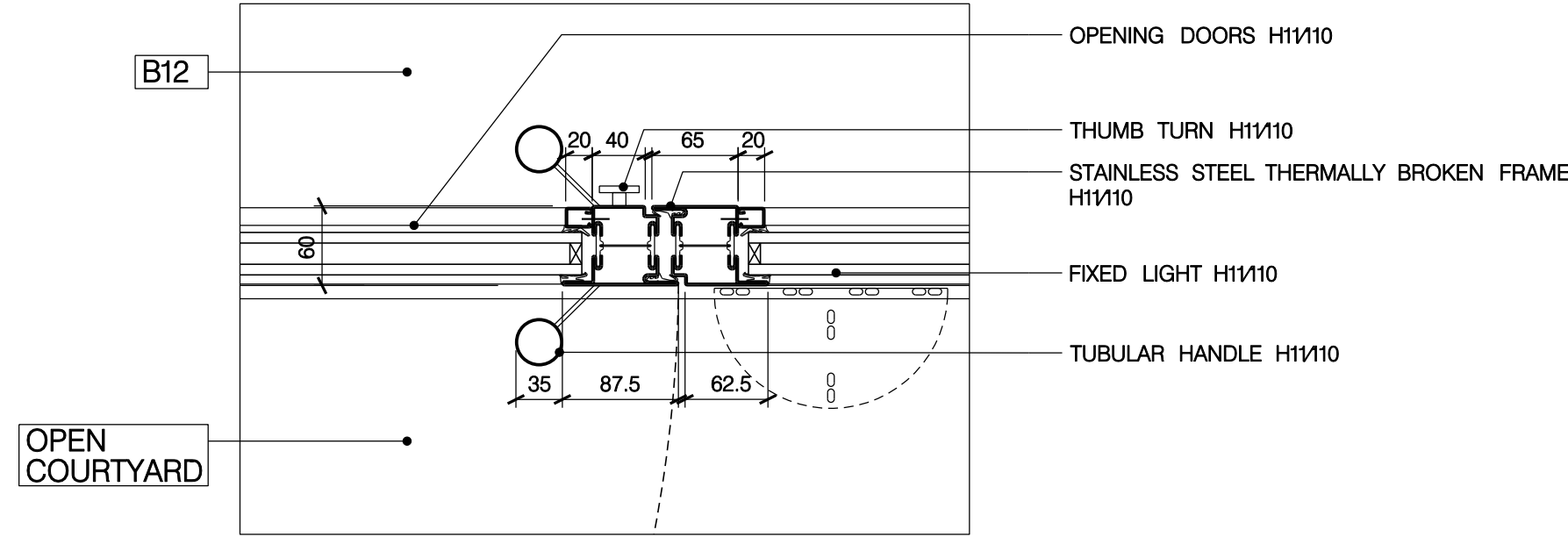


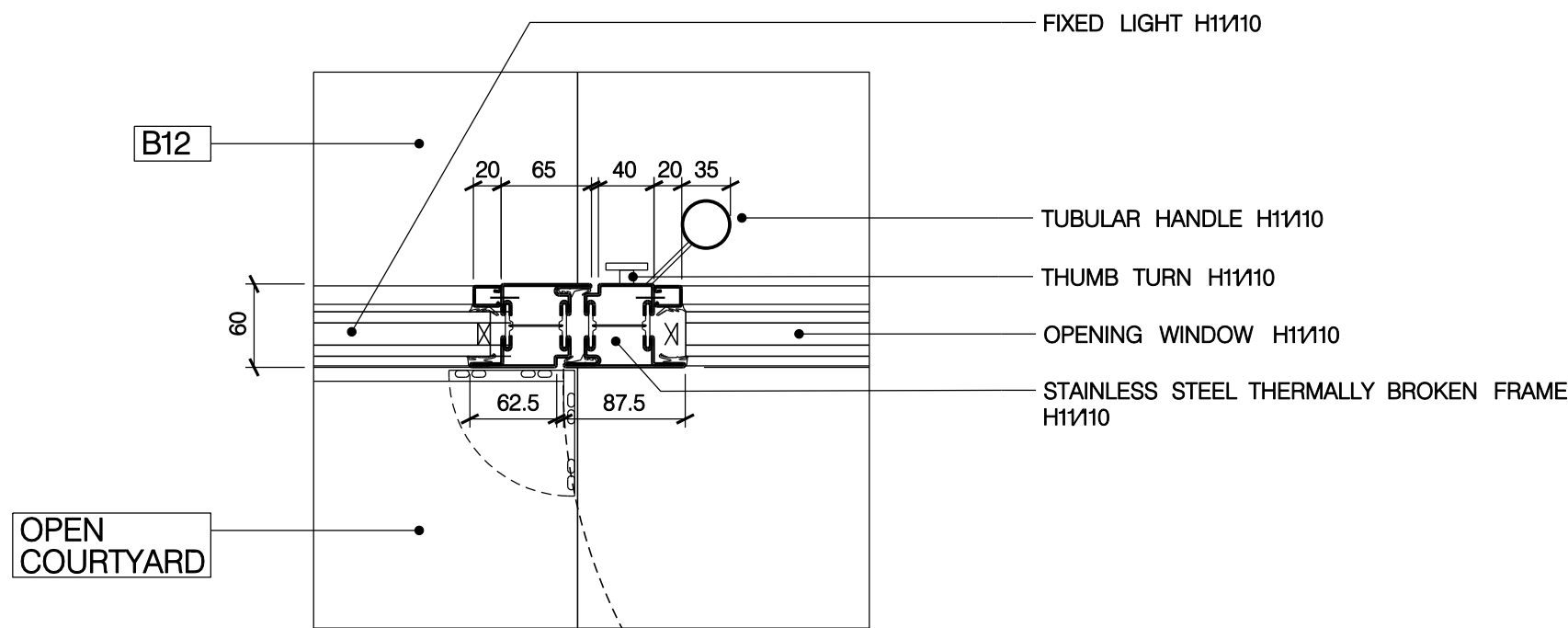
01  
2036 PLAN DETAIL  
GLAZING JAMB AT EXISTING BRICK WALL



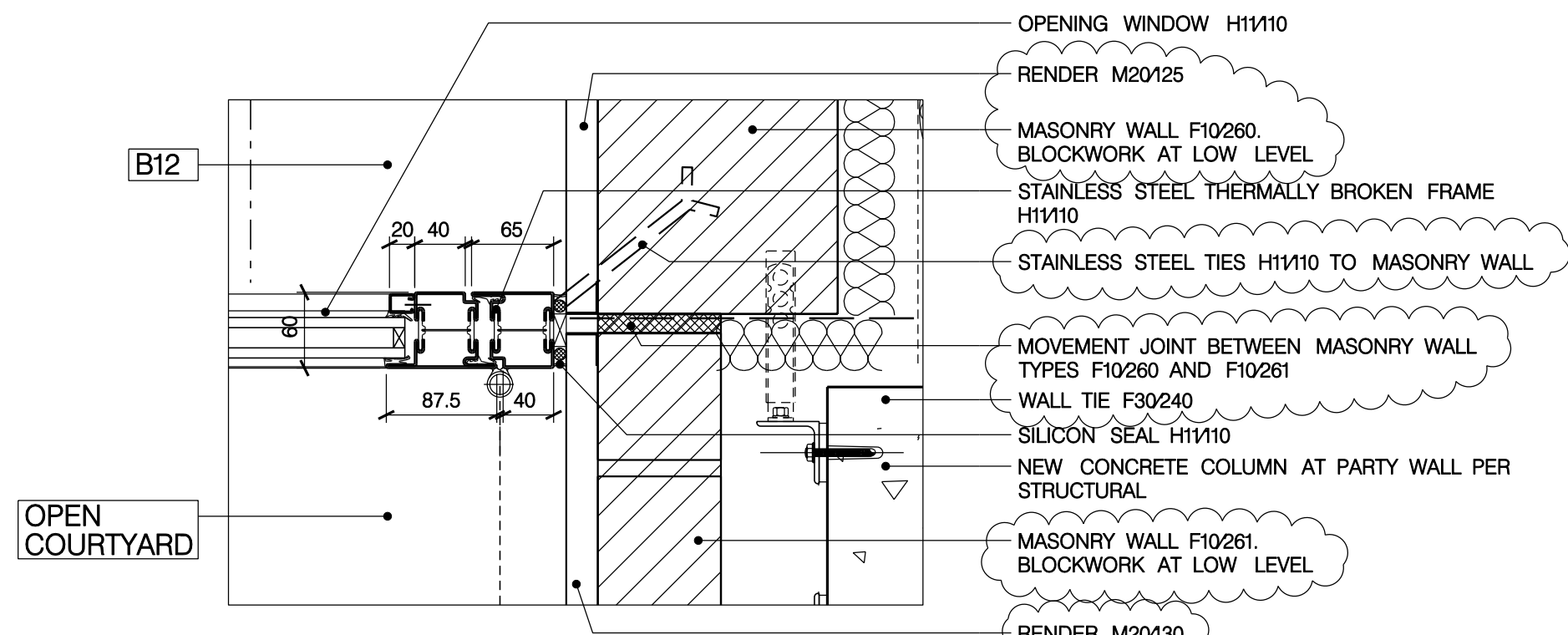
02  
2036 PLAN DETAIL  
DOOR JAMB AT GLAZING



03  
2036 PLAN DETAIL  
DOOR HANDLE



05  
2036 PLAN DETAIL  
GLAZING JAMB AT OPERABLE WINDOW



06  
2036 PLAN DETAIL  
OPERABLE WINDOW JAMB AT NEW BRICK WALL

## GENERAL NOTES

- GN1. DRAWINGS TO BE READ IN CONJUNCTION WITH ALL ENGINEERS' & SPECIALISTS' DRAWINGS & ALL SPECIFICATIONS
- GN2. DO NOT SCALE FROM THIS DRAWING.
- GN3. ALL DIMENSIONS TO BE VERIFIED ON SITE. FIGURED DIMENSIONS TO TAKE PREFERENCE ON THOSE SCALED.
- GN4. ALL LEVELS TO BE TO ORDNANCE DATUM UNLESS OTHERWISE SPECIFIED.
- GN5. DRAWINGS ARE THE PROPERTY OF IAN RITCHIE ARCHITECTS LTD. AND ARE ISSUED ON THE CONDITION THEY ARE NOT REPRODUCED, RETAINED OR DISCLOSED TO ANY UNAUTHORISED PERSON, EITHER WHOLLY OR IN PART WITHOUT WRITTEN CONSENT OF IAN RITCHIE ARCHITECTS LTD.
- GN6. ALL SERVICES SHOWN ARE INDICATIVE. WORKS TO BE COORDINATED WITH BUILDERS WORK AND INSTALLATION DRAWINGS.

## DETAIL NOTES

## LEGEND

- AMENDMENT
- IN ABEYANCE

K00	19.01.08	CR	Issued for Construction. Added render to masonry walls.
FOI	30.08.08	FF	Brick wall assembly updated/issued for tender, annotation to floorbench beyond dashed, location annotation added.
FO0	12.09.08	FF	First issue - Refer to Note 1 above
Rev	Date	By	Description

Job Title  
NORTH HOUSE

Drawing Title  
Plan Details  
Glazed Screen  
Enclosed Courtyard  
Sheet 17

**IAN RITCHIE ARCHITECTS** ®  
110 Three Colt Street London E14 8AZ  
Tel: 020 7338 1100 Fax: 020 7338 1199

0 50mm 100mm 150mm 200mm

Status  
CONSTRUCTION

Scale  
1:5 [A1]

Date  
12.09.08

Drawn FF	Checked TM	Approved AS
-------------	---------------	----------------

Job No 560	Drawing No IRAL-2036	Rev K00
---------------	-------------------------	------------