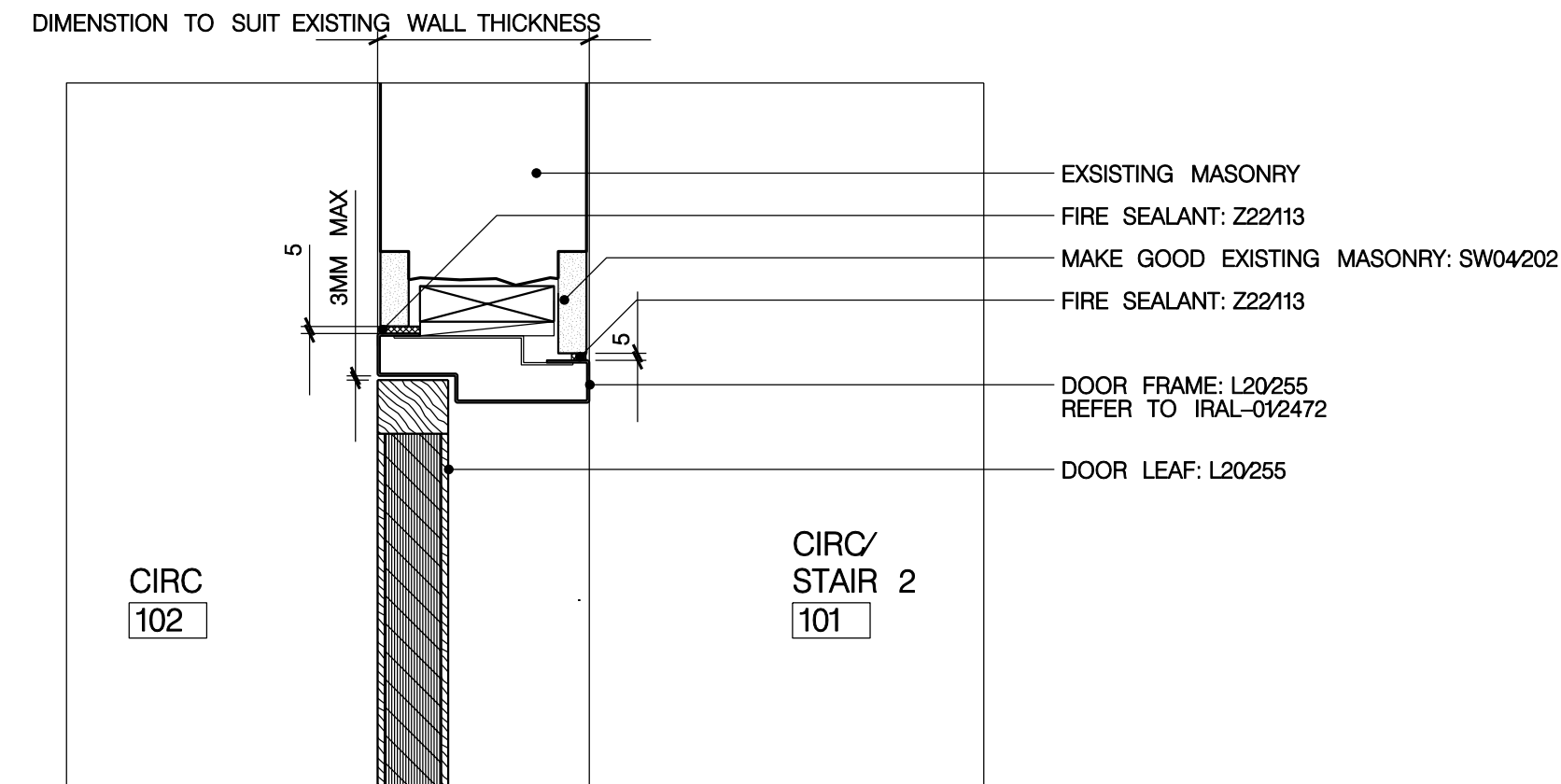


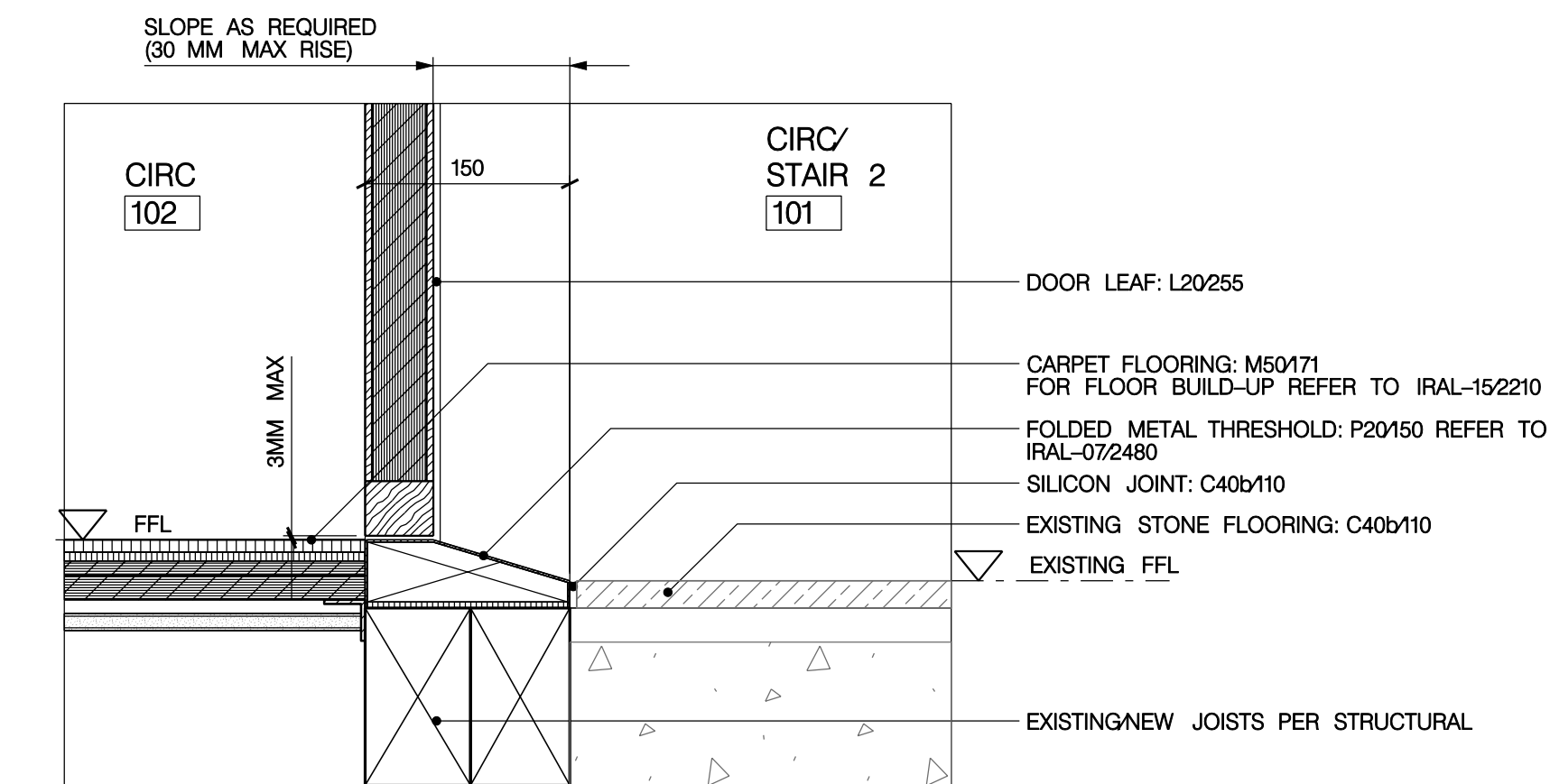
01
2456

PLAN DETAIL
JAMB DETAIL OF D-102-1



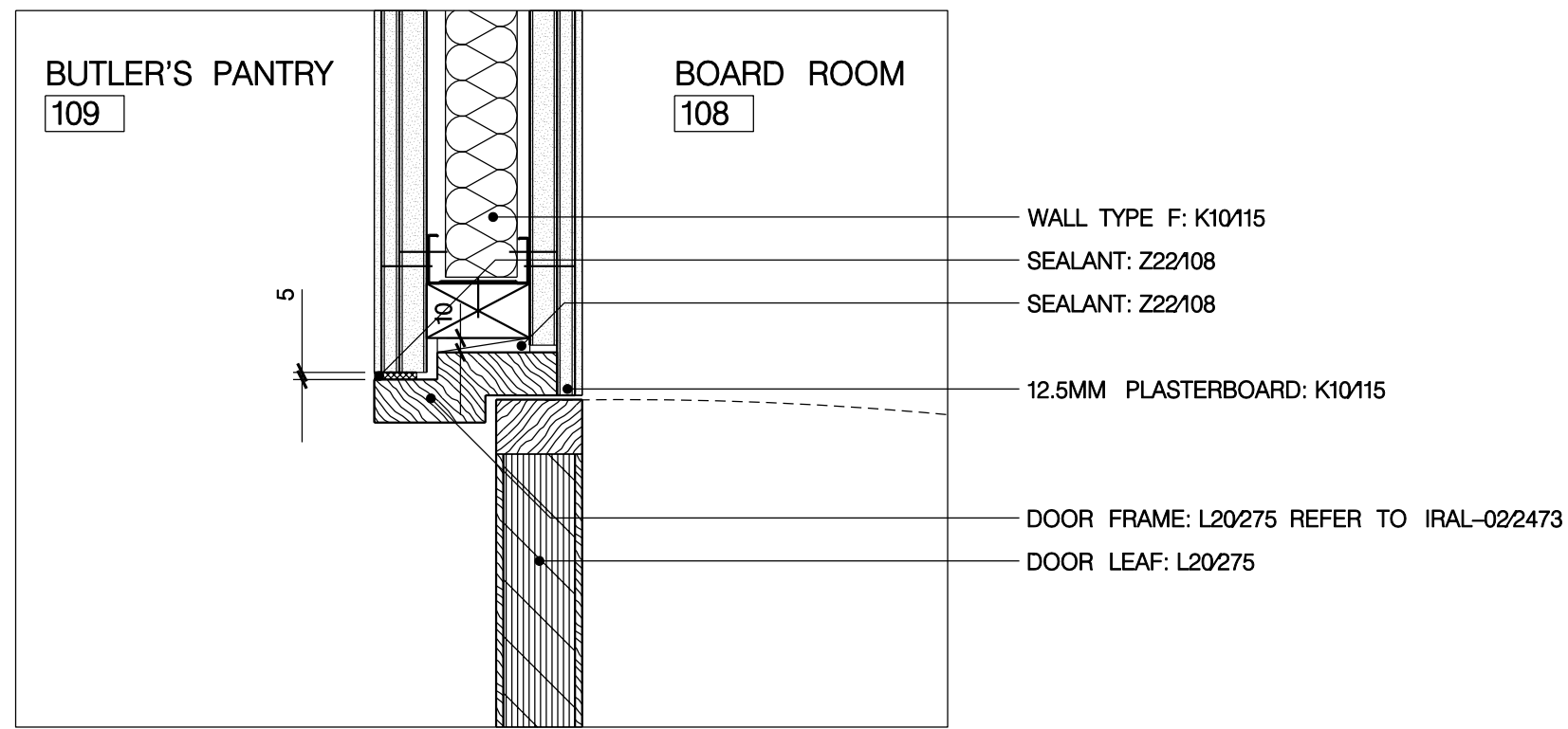
04
2456

SECTION DETAIL
HEAD DETAIL OF D-102-1



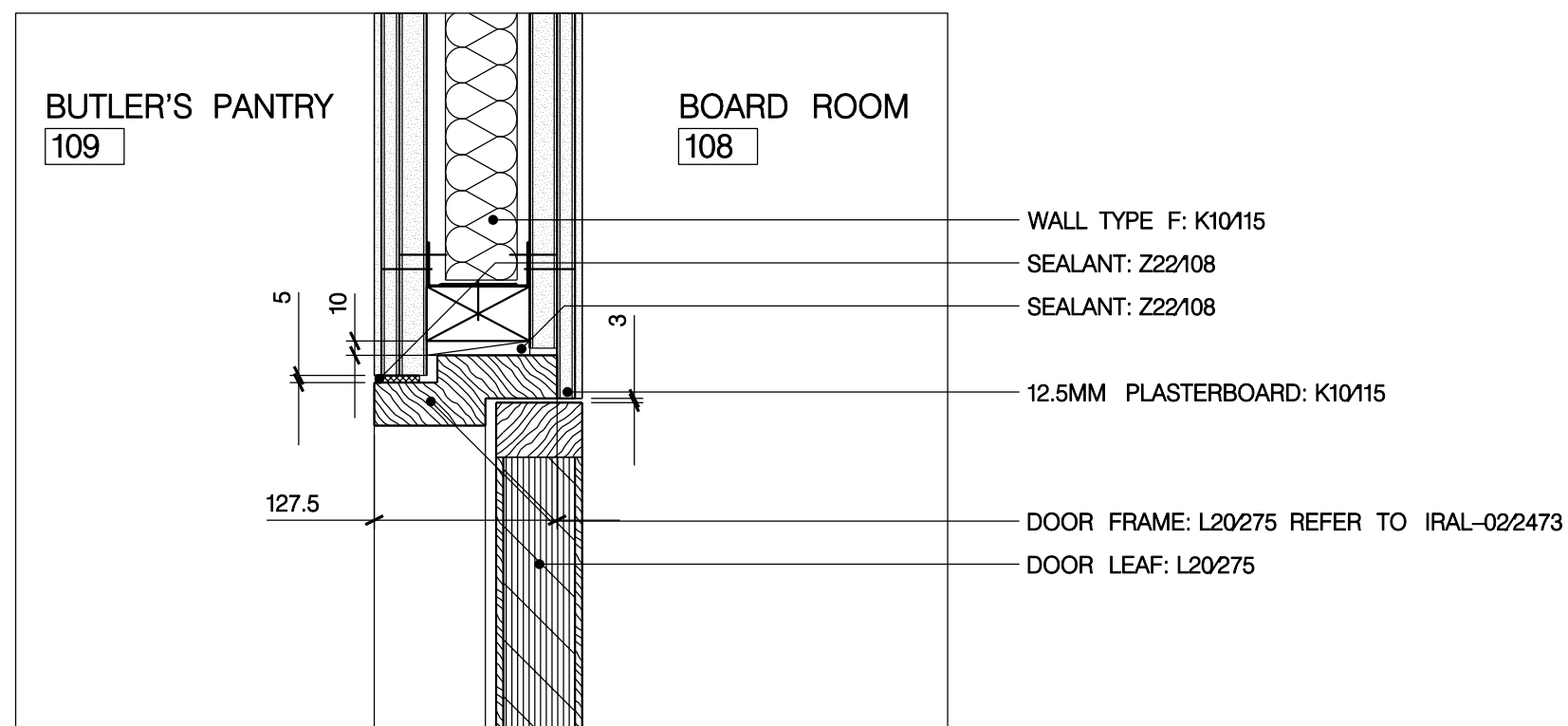
06
2456

SECTION DETAIL
THRESHOLD DETAIL OF D-102-1



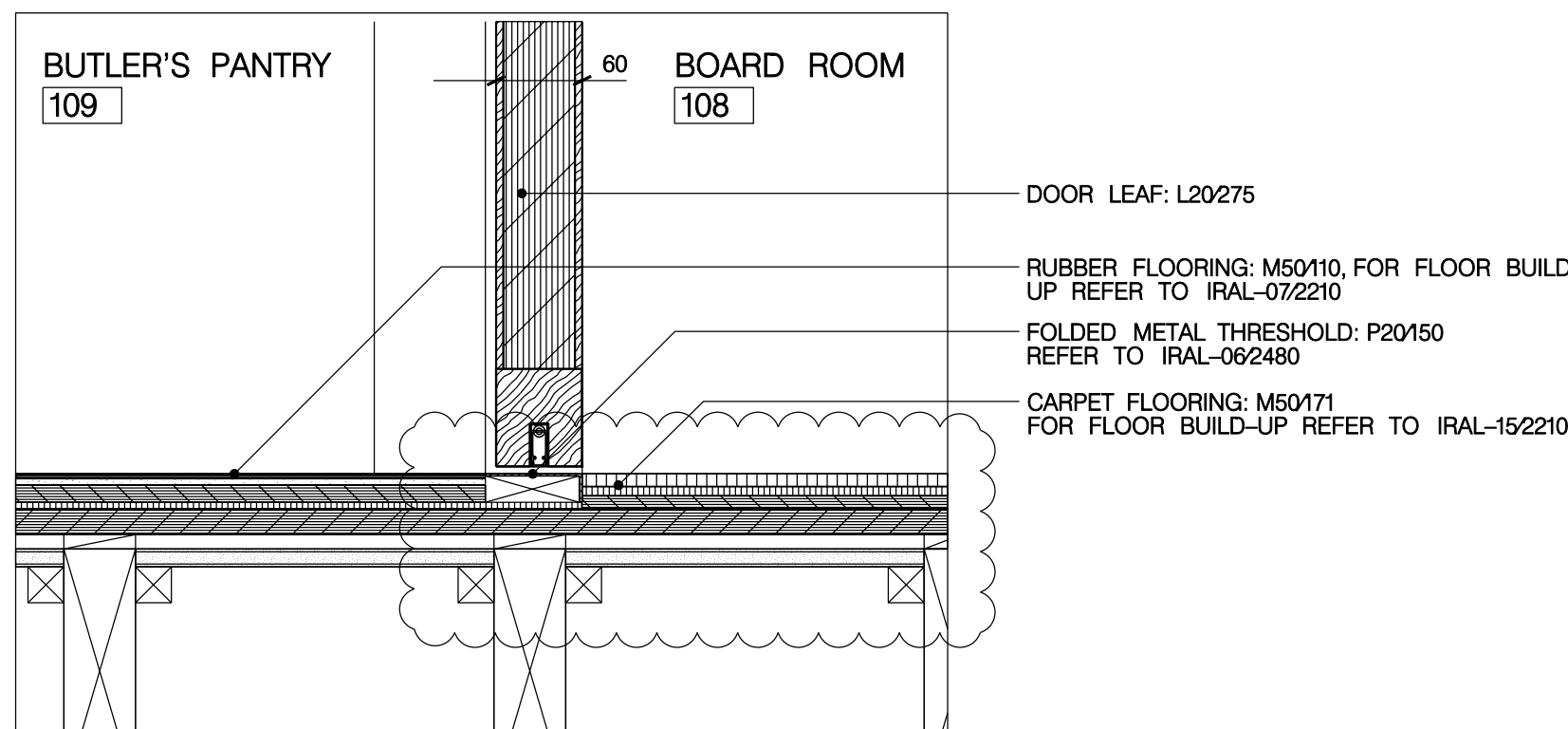
02
2456

PLAN DETAIL
JAMB DETAIL OF D-108-2



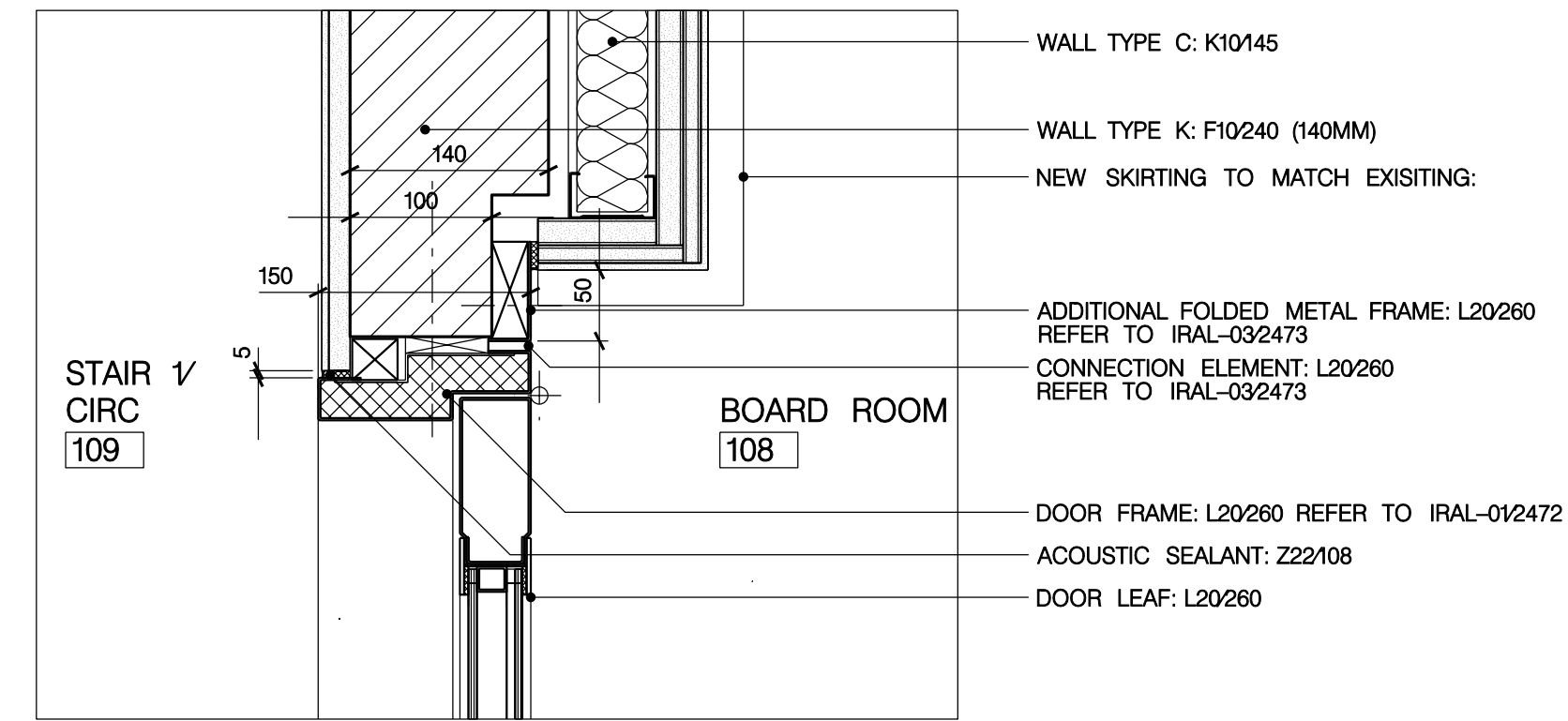
05
2456

SECTION DETAIL
HEAD DETAIL OF D-108-2



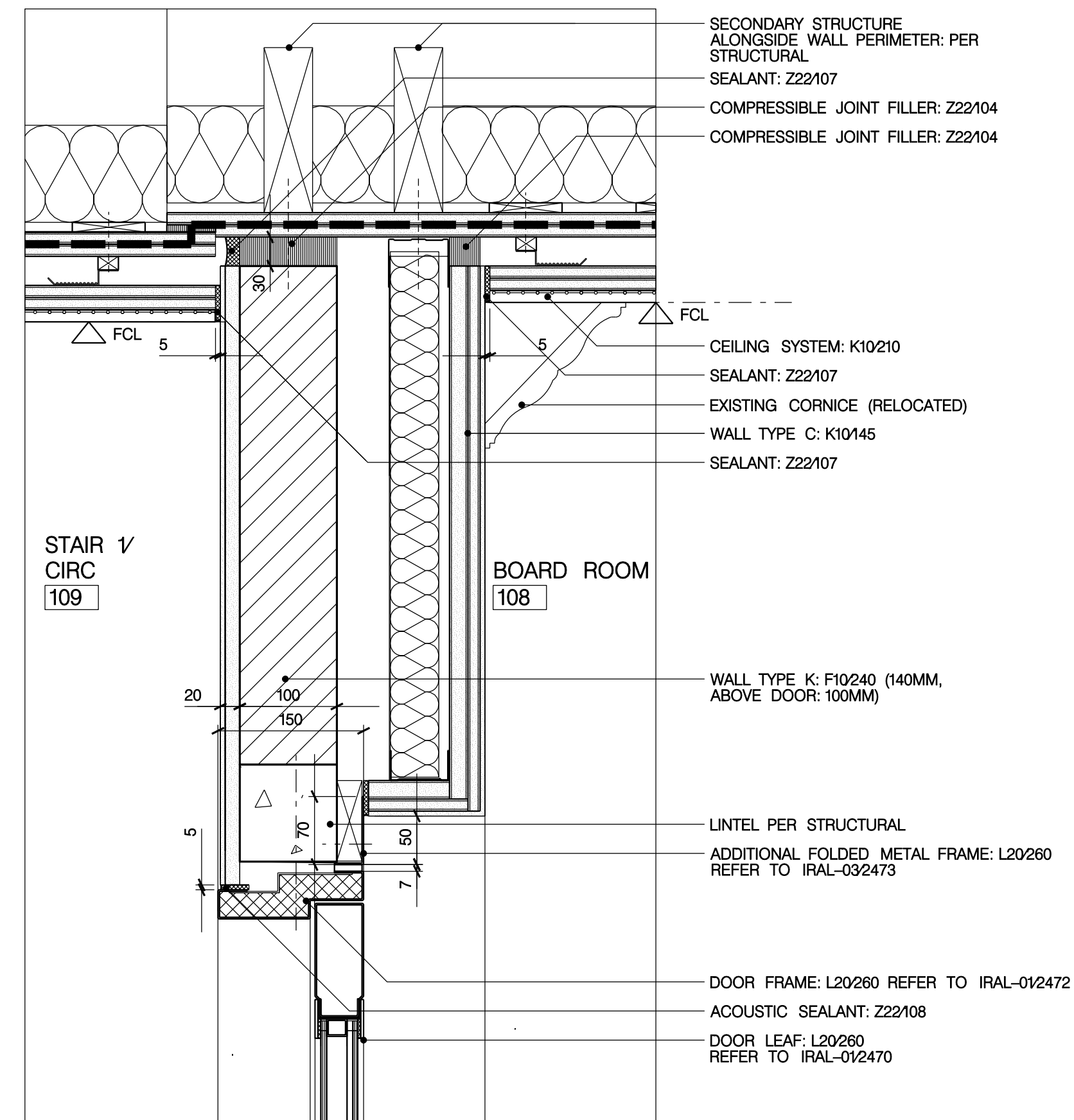
07
2456

SECTION DETAIL
THRESHOLD DETAIL OF D-108-2



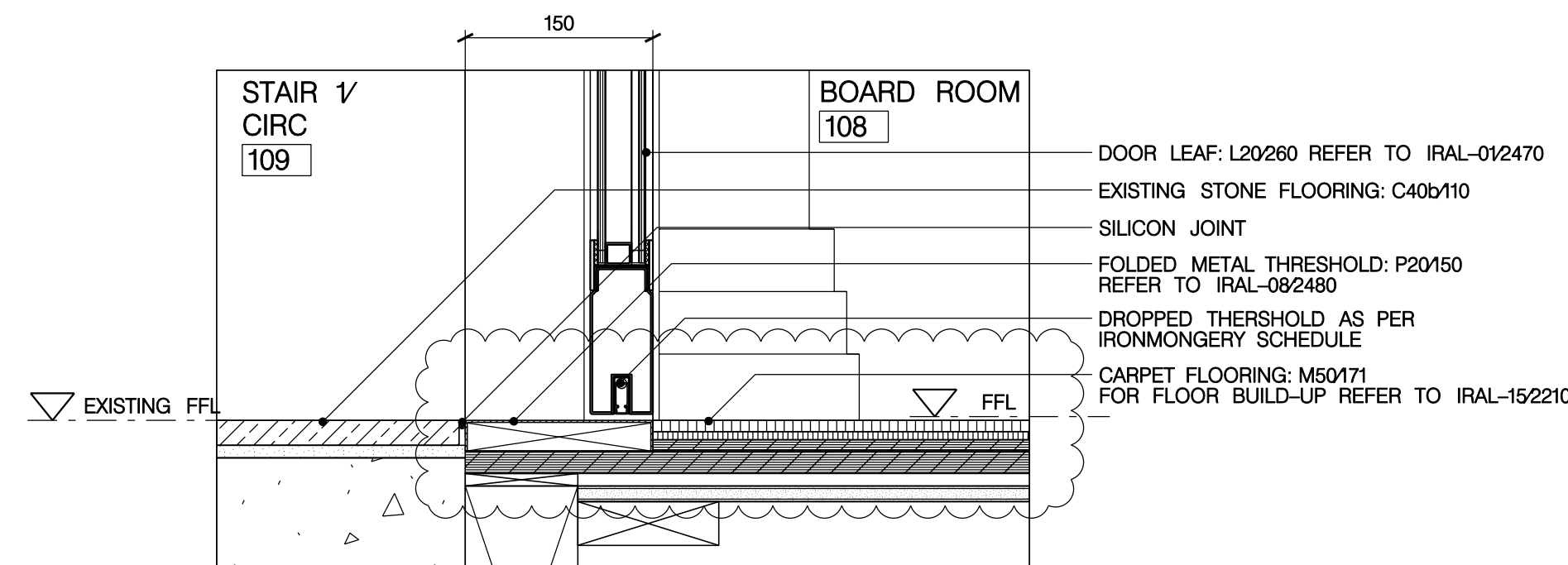
03
2456

PLAN DETAIL
JAMB DETAIL OF D-108-1



08
2456

SECTION DETAIL
HEAD DETAIL OF D-108-1



09
2456

SECTION DETAIL
THRESHOLD DETAIL OF D-108-1

GENERAL NOTES

- GN1. DRAWINGS TO BE READ IN CONJUNCTION WITH ALL ENGINEERS' & SPECIALISTS' DRAWINGS & ALL SPECIFICATIONS.
- GN2. DO NOT SCALE FROM THIS DRAWING.
- GN3. ALL DIMENSIONS TO BE VERIFIED ON SITE. FIGURED DIMENSIONS TO TAKE PREFERENCE ON THOSE SCALED.
- GN4. ALL LEVELS TO BE TO ORDINANCE DATUM UNLESS OTHERWISE SPECIFIED.
- GN5. DRAWINGS ARE THE PROPERTY OF IAN RITCHIE ARCHITECTS LTD. AND ARE NOT REPRODUCED, RETAINED OR DISCLOSED TO ANY UNAUTHORISED PERSON, EITHER WHOLLY OR IN PART WITHOUT WRITTEN CONSENT OF IAN RITCHIE ARCHITECTS LTD.
- GN6. ALL SERVICES SHOWN ARE INDICATIVE. WORKS TO BE COORDINATED WITH BUILDERS WORK AND INSTALLATION DRAWINGS.

DETAIL NOTES

1. TO BE READ IN CONJUNCTION WITH DOOR TYPES IRAL-2410 TO IRAL-2427
2. TO BE READ IN CONJUNCTION WITH DOOR SCHEDULE IRAL-2400 & IRAL-2401
3. FOR IRONMONGERY SCHEDULE REFER TO IRAL-P21-1001-D
4. FOR ADDITIONAL INFORMATION REFER TO GAS AND 1:20 DETAIL SHEETS.

LEGEND

- AMENDMENT
- IN ABEYANCE

| Rev | Date | By | Description |
|-----|----------|----|---|
| K02 | 17.04.09 | AC | 09/256, 012256 and 09/256: floor build-up revised as per previously issued specification |
| K01 | 02.03.09 | AC | Appication, references, dimensions amended/added 09/2456: Rubber floor changed to carpet. |
| K00 | 19.01.09 | AC | STAGE K: ISSUE |

Job Title
NORTH HOUSE

Drawing Title
**Details –
Interior door types
Sheet 7**

IAN RITCHIE ARCHITECTS ®
110 Three Colt Street London E14 8AZ
Tel: 020 7338 1100 Fax: 020 7338 1199

0 50mm 100mm 150mm 200mm

Status
CONSTRUCTION

Scale
1:5 [A1]

Date
19.01.09

| | | |
|-------------|---------------|----------------|
| Drawn AC | Checked TM | Approved AS |
|-------------|---------------|----------------|

| | | |
|----------------------|--------------------------------|-------------------|
| Job No 560 | Drawing No IRAL-2456 | Rev K02 |
|----------------------|--------------------------------|-------------------|