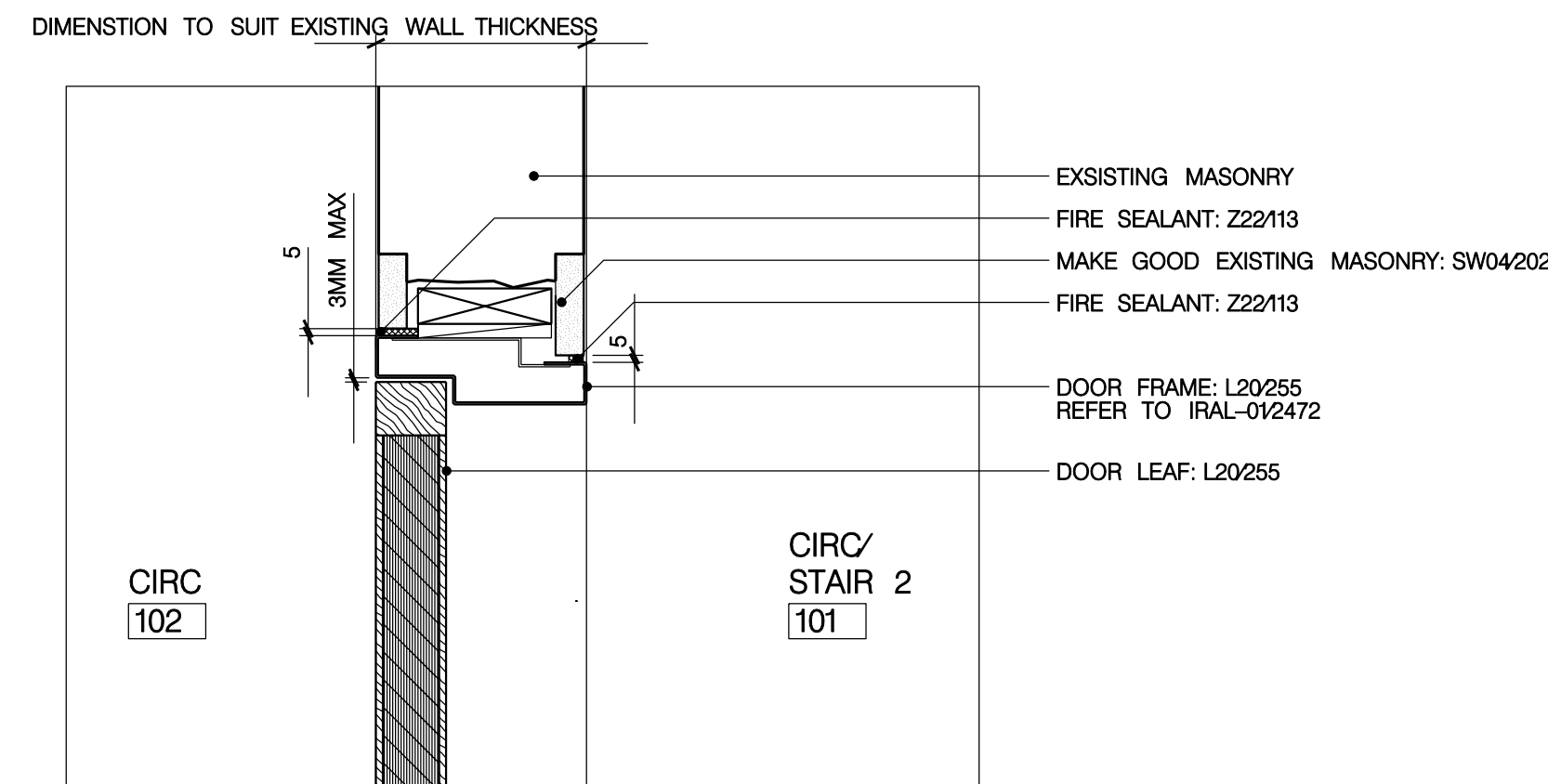
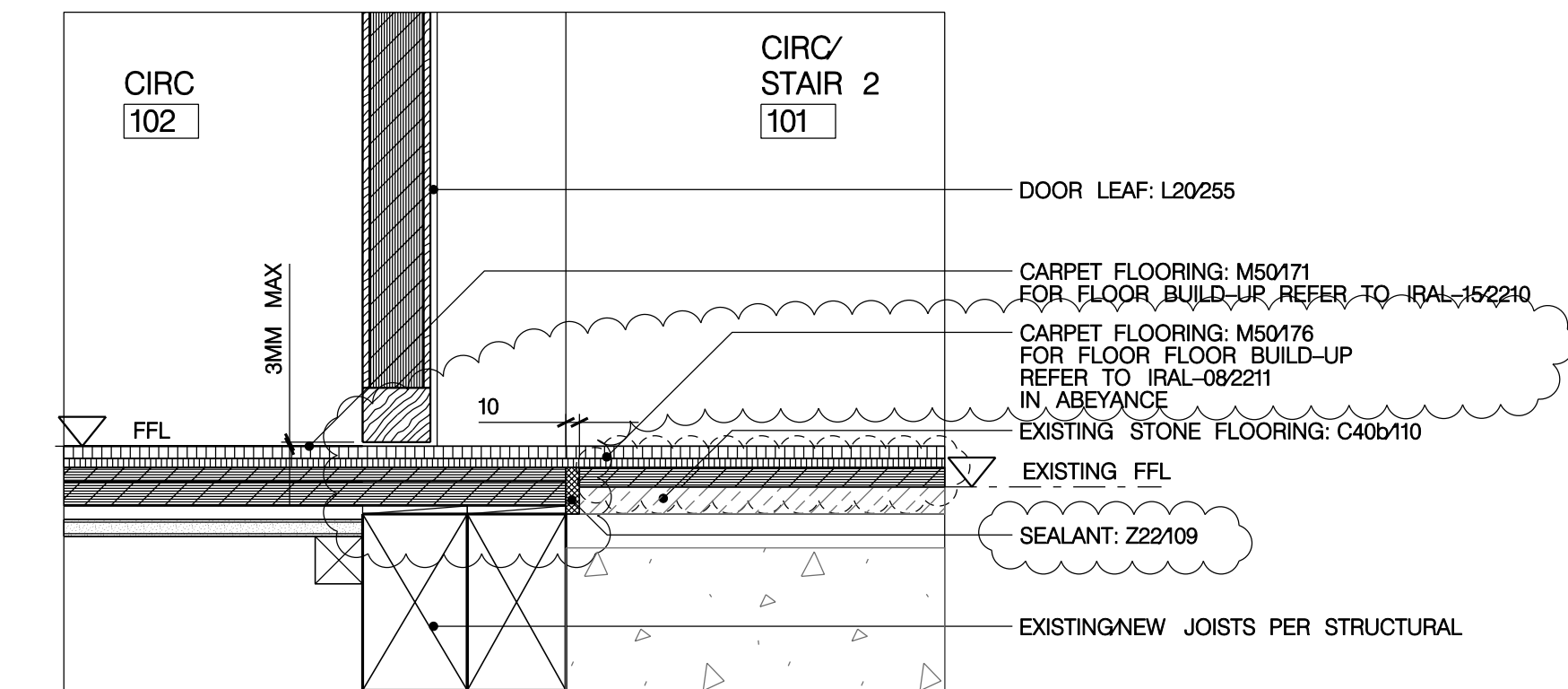


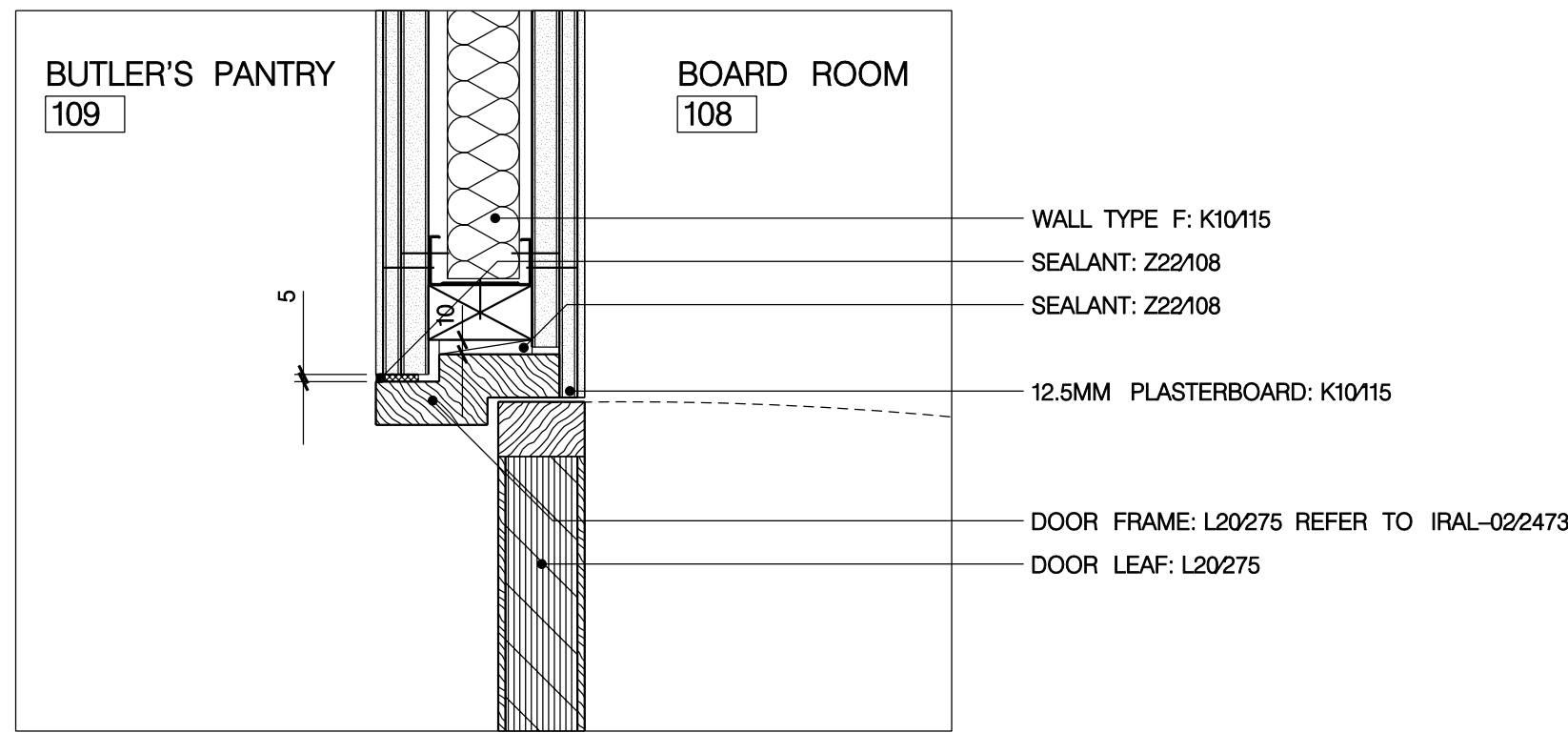
01  
2456 PLAN DETAIL  
JAMB DETAIL OF D-102-1



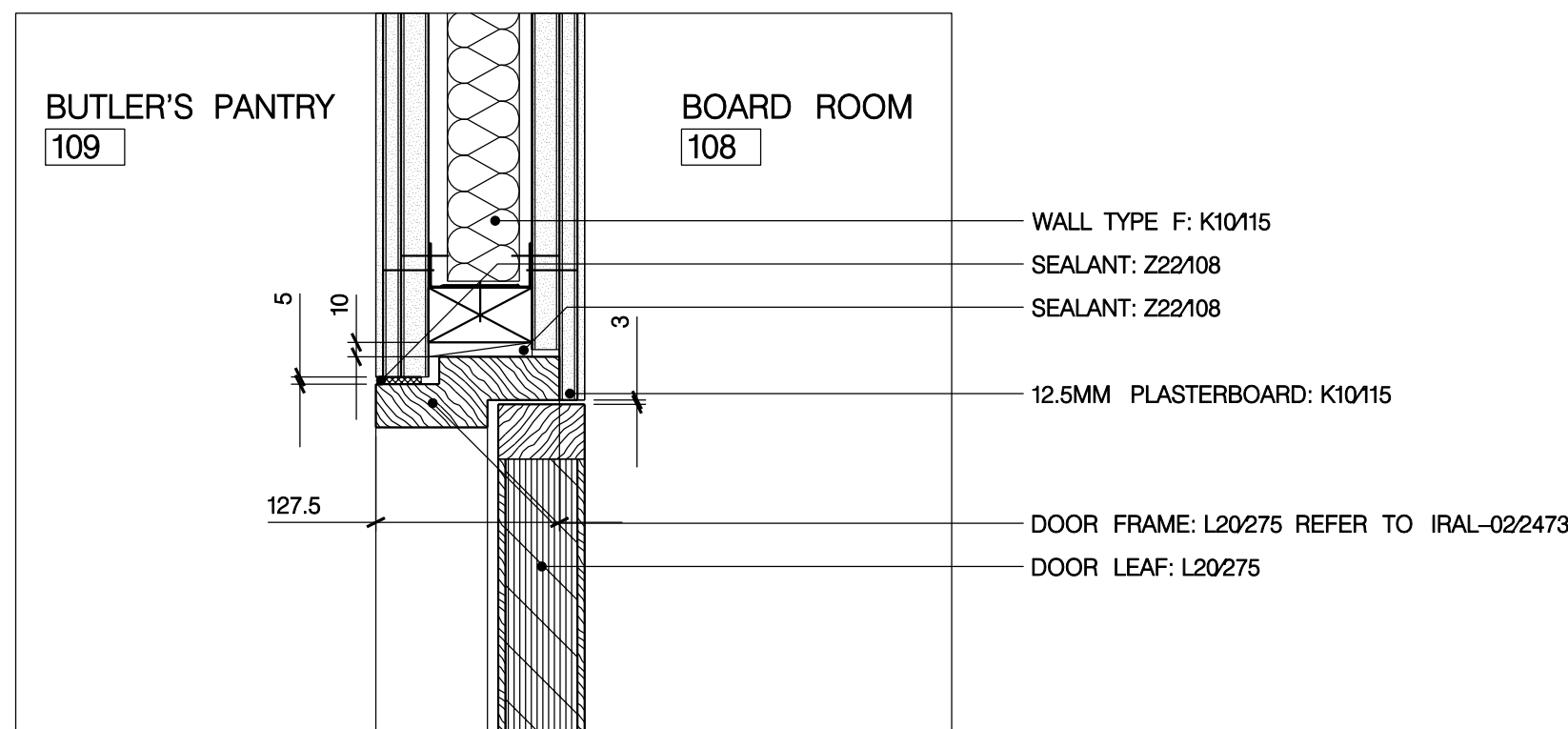
04  
2456 SECTION DETAIL  
HEAD DETAIL OF D-102-1



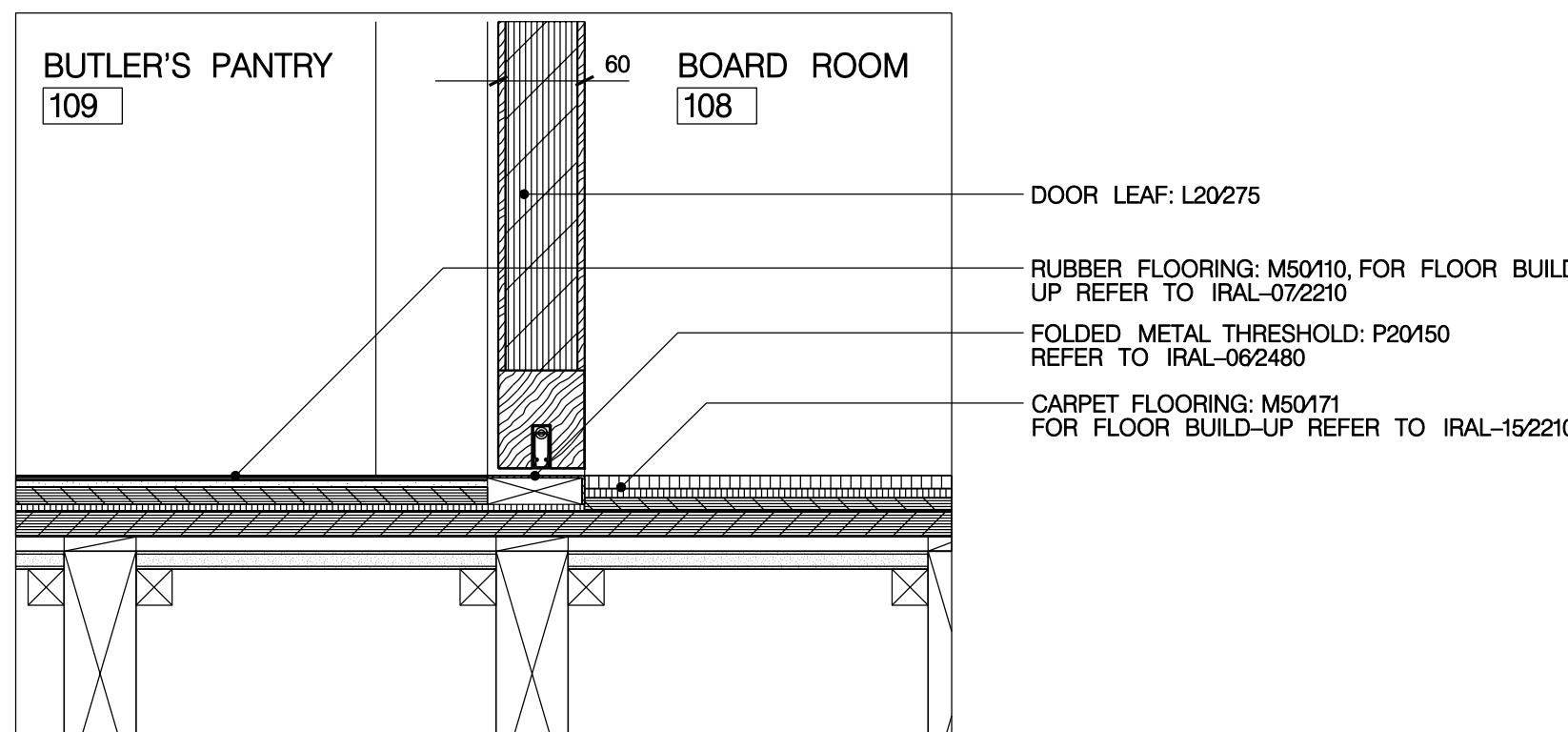
06  
2456 SECTION DETAIL  
THRESHOLD DETAIL OF D-102-1



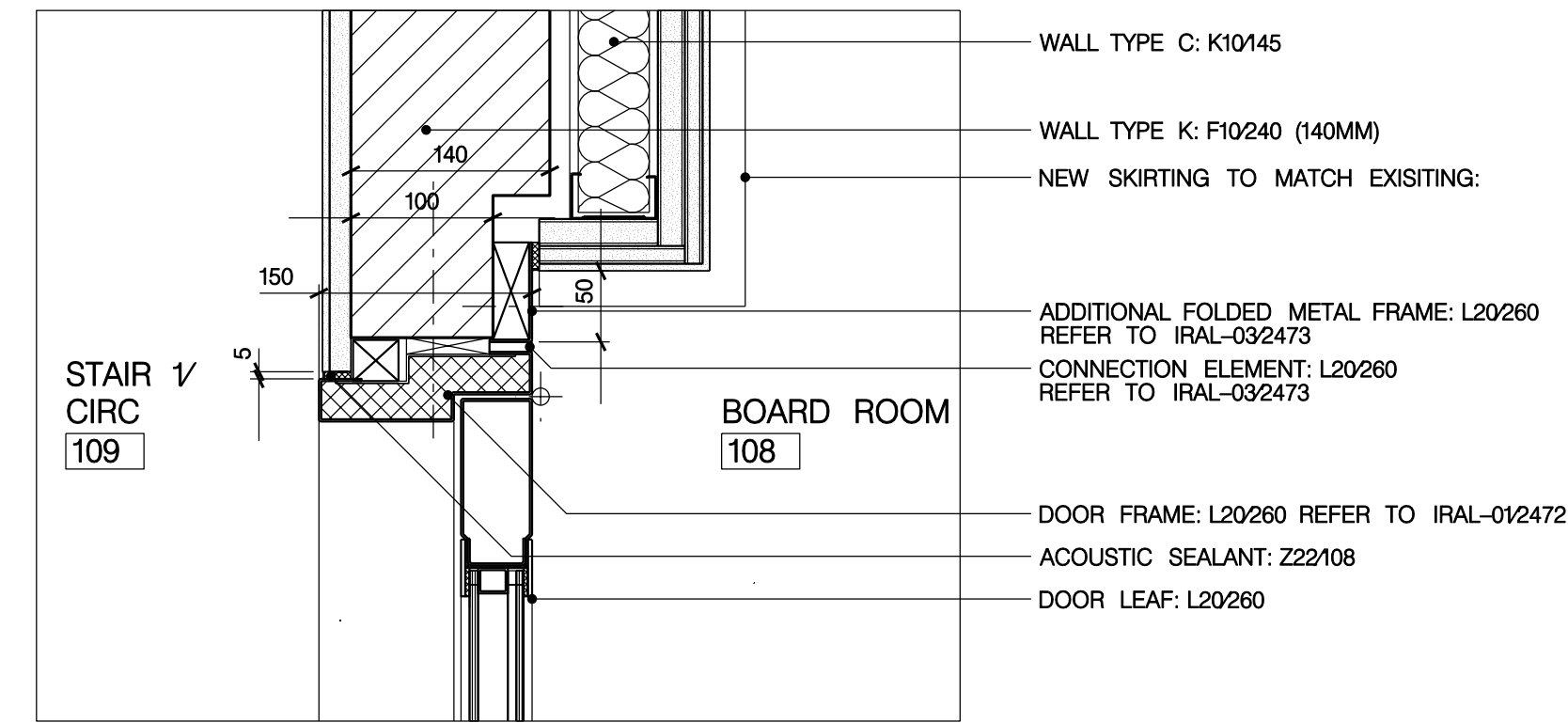
02  
2456 PLAN DETAIL  
JAMB DETAIL OF D-108-2



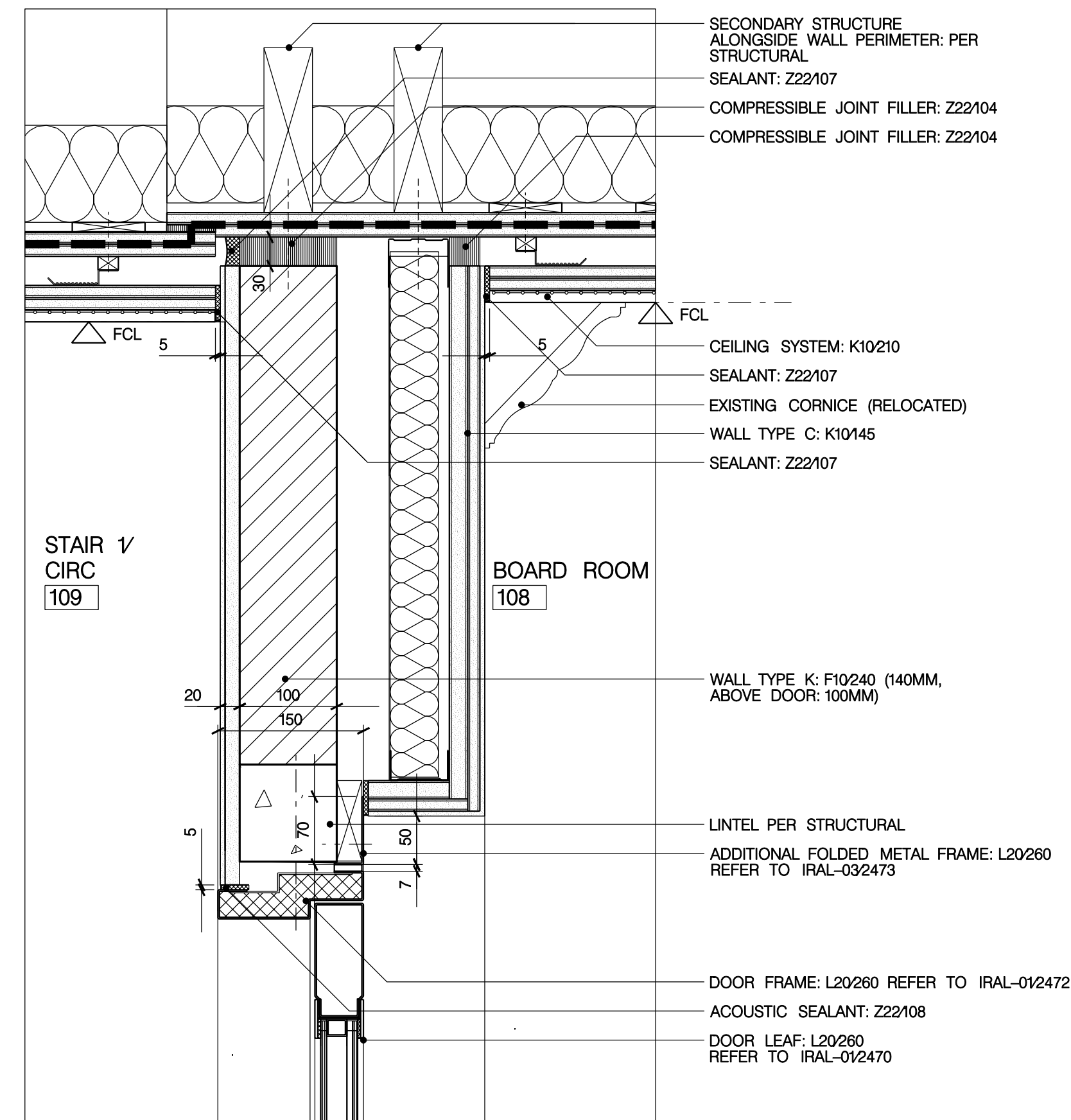
05  
2456 SECTION DETAIL  
HEAD DETAIL OF D-108-2



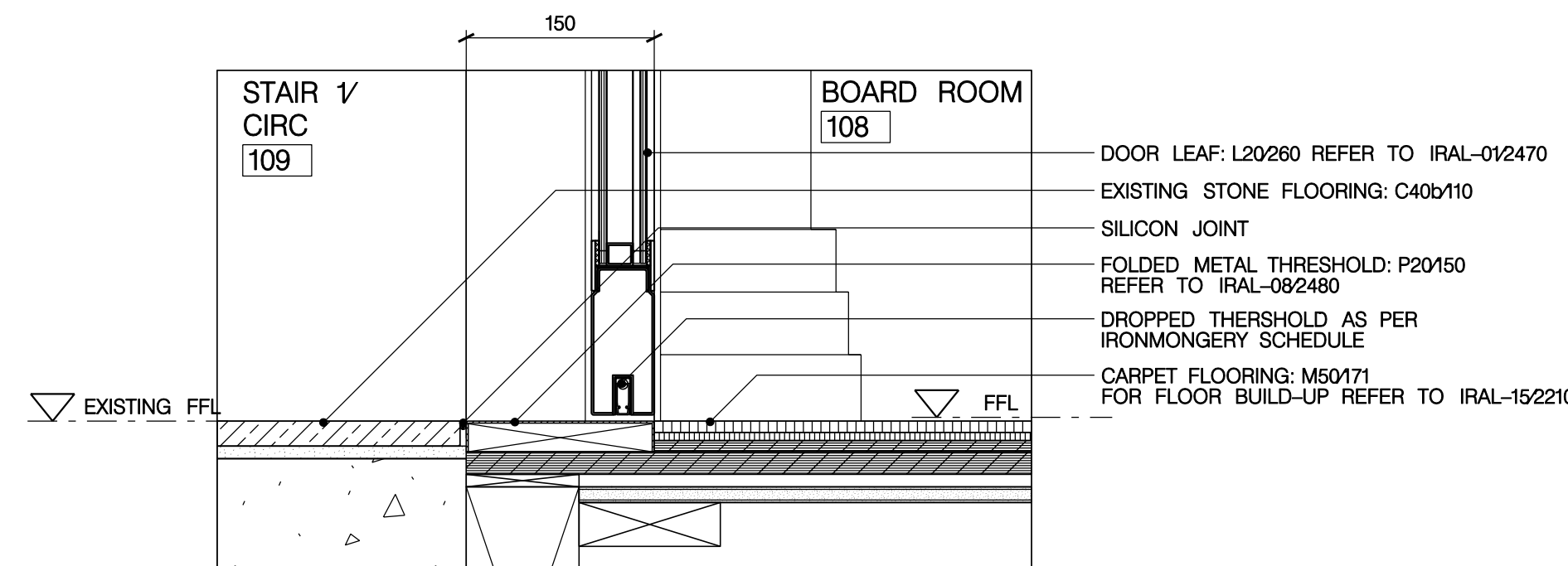
07  
2456 SECTION DETAIL  
THRESHOLD DETAIL OF D-108-2



03  
2456 PLAN DETAIL  
JAMB DETAIL OF D-108-1



08  
2456 SECTION DETAIL  
HEAD DETAIL OF D-108-1



09  
2456 SECTION DETAIL  
THRESHOLD DETAIL OF D-108-1

## GENERAL NOTES

- GN1. DRAWINGS TO BE READ IN CONJUNCTION WITH ALL ENGINEERS' & SPECIALISTS' DRAWINGS & ALL SPECIFICATIONS  
GN2. DO NOT SCALE FROM THIS DRAWING.  
GN3. ALL DIMENSIONS TO BE VERIFIED ON SITE. FIGURED DIMENSIONS TO TAKE PREFERENCE ON THOSE SCALED.  
GN4. ALL LEVELS TO BE TO ORDINANCE DATUM UNLESS OTHERWISE SPECIFIED.  
GN5. DRAWINGS ARE THE PROPERTY OF IAN RITCHIE ARCHITECTS LTD. AND ARE ISSUED ON THE CONDITION THEY ARE NOT REPRODUCED, RETAINED OR DISCLOSED TO ANY UNAUTHORISED PERSON, EITHER WHOLLY OR IN PART WITHOUT WRITTEN CONSENT OF IAN RITCHIE ARCHITECTS LTD.  
GN6. ALL SERVICES SHOWN ARE INDICATIVE. WORKS TO BE COORDINATED WITH BUILDERS WORK AND INSTALLATION DRAWINGS.

## DETAIL NOTES

1. TO BE READ IN CONJUNCTION WITH DOOR TYPES IRAL-2410 TO IRAL-2427  
2. TO BE READ IN CONJUNCTION WITH DOOR SCHEDULE IRAL-2400 & IRAL-2401  
3. FOR IRONMONGERY SCHEDULE REFER TO IRAL-P21-1001-D  
4. FOR ADDITIONAL INFORMATION REFER TO GAS AND 1:20 DETAIL SHEETS.

## LEGEND

- AMENDMENT  
IN ABEYANCE

Rev	Date	By	Description
K03	07.08.09	AC	092256, carpet finish added to existing stone finish, metal threshold omitted.
K02	17.04.09	AC	092256, 012256 and 092256 floor build-ups revised as per previously issued specification
K01	02.03.09	AC	Appication, references, dimensions amended/added 092456. Rubber floor changed to carpet.
K00	19.01.09	AC	STAGE K, ISSUE

Job Title  
**NORTH HOUSE**

Drawing Title  
**Details –  
Interior door types  
Sheet 7**

**IAN RITCHIE ARCHITECTS** ®  
110 Three Colt Street London E14 8AZ  
Tel: 020 7338 1100 Fax: 020 7338 1199

0 50mm 100mm 150mm 200mm

Status  
**CONSTRUCTION**

Scale  
**1:5 [A1]** Date  
**19.01.09**

Drawn  
**AC** Checked  
**TM** Approved  
**AS**

Job No  
**560** Drawing No  
**IRAL-2456** Rev  
**K03**