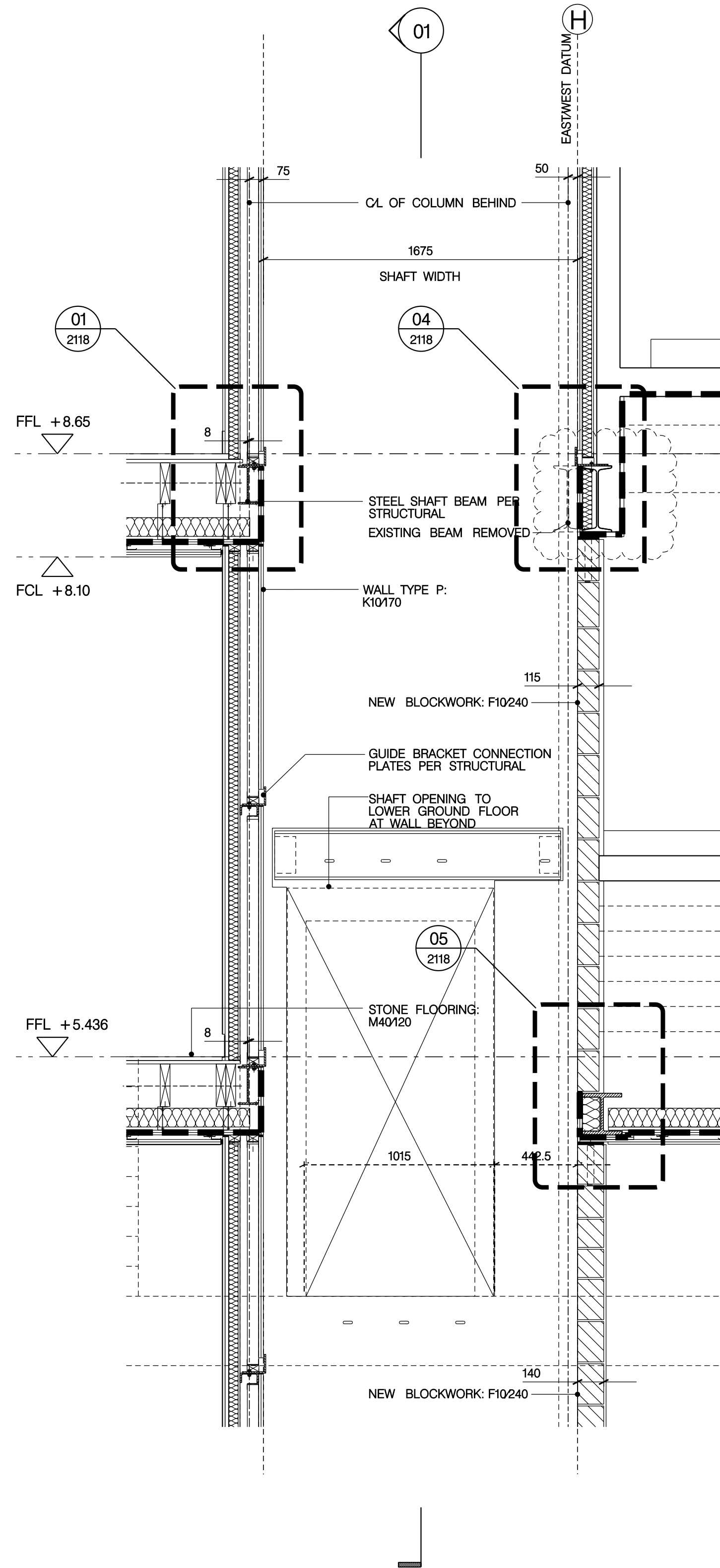
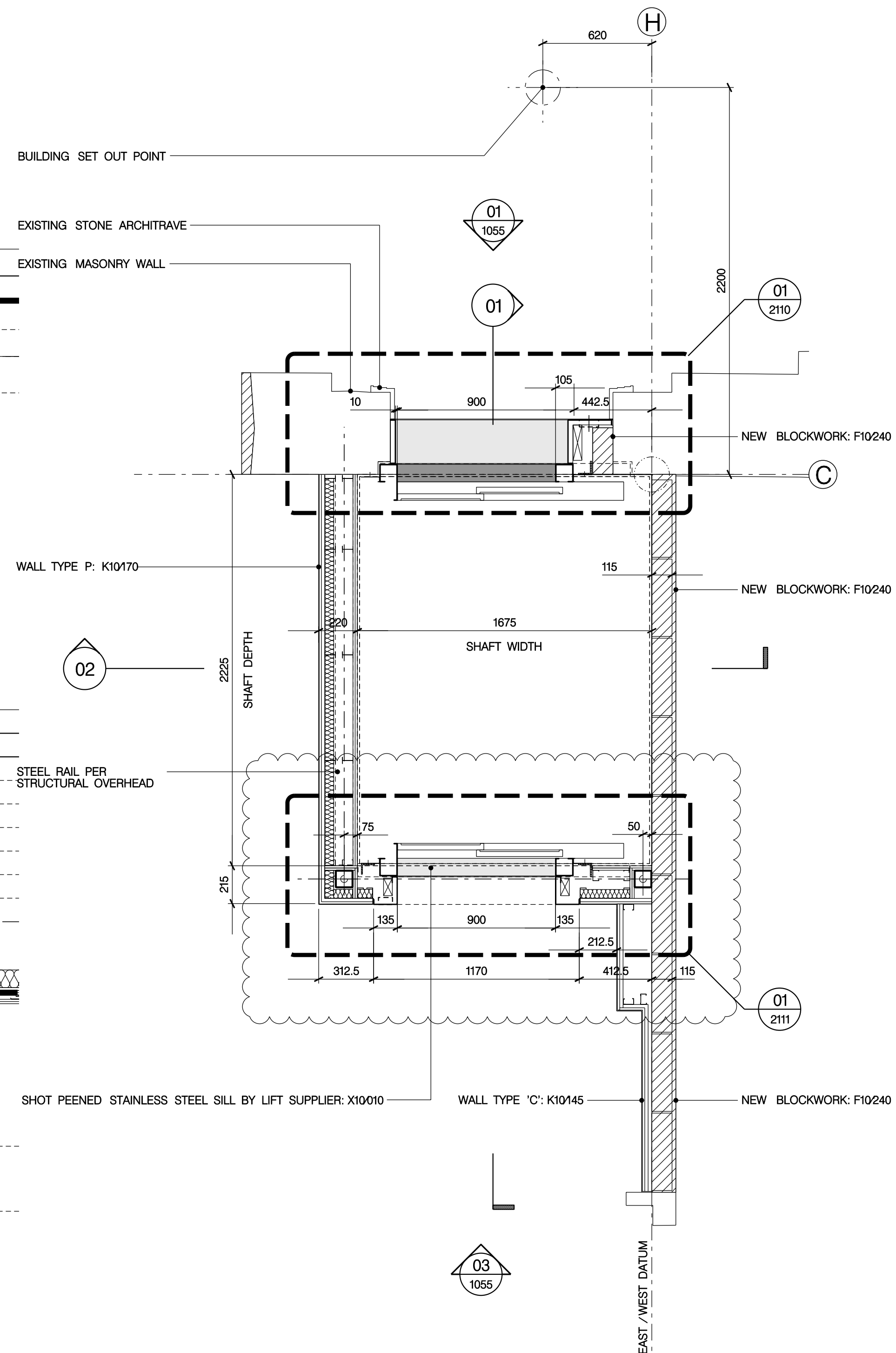


01 1054 EAST/WEST SECTION
GROUND FLOOR LIFT



02 1054 NORTH/SOUTH SECTION
GROUND FLOOR LIFT



03 1054 PLAN
GROUND FLOOR LIFT

NOTE: ALL PRIMARY STEEL WORK TO BE BOXED IN
TO PROVIDE MIN. 60 MINUTES FIRE PROTECTION K10240

GENERAL NOTES

- GN1. DRAWINGS TO BE READ IN CONJUNCTION WITH ALL ENGINEERS' & SPECIALISTS' DRAWINGS & ALL SPECIFICATIONS.
- GN2. DO NOT SCALE FROM THIS DRAWING.
- GN3. ALL DIMENSIONS TO BE VERIFIED ON SITE. FIGURED DIMENSIONS TO TAKE PREFERENCE ON THOSE SCALED.
- GN4. ALL LEVELS TO BE TO ORDNANCE DATUM UNLESS OTHERWISE SPECIFIED.
- GN5. DRAWINGS ARE THE PROPERTY OF IAN RITCHIE ARCHITECTS LTD. AND ARE ISSUED ON THE CONDITION THEY ARE NOT REPRODUCED, RETAINED OR DISCLOSED TO ANY UNAUTHORISED PERSON, EITHER WHOLLY OR IN PART WITHOUT WRITTEN CONSENT OF IAN RITCHIE ARCHITECTS LTD.
- GN6. ALL SERVICES SHOWN ARE INDICATIVE WORKS TO BE COORDINATED WITH BUILDERS WORK AND INSTALLATION DRAWINGS.

LEGEND

- EXISTING BUILDING FABRIC TO BE RETAINED
- NEW BLOCKWORK
- NEW BRICKWORK
- AMENDMENT IN ABEYANCE

K01	06.03.09	PB	Architraves updated
K02	10.01.09	PB	General updates, Glass removed from doors
F01	12.09.09	TM	FIRST ISSUE
Rev	Date	By	Description

Job Title
NORTH HOUSE

Drawing Title
**Lift
Ground Floor
Sheet 1**

IAN RITCHIE ARCHITECTS
110 Three Colt Street London E14 8AZ
Tel: 020 7338 1100 Fax: 020 7338 1199

0 200mm 400mm 600mm 800mm

Status
Information
CONSTRUCTION

Scale
1:20 [A1]

Date
12.09.08

Drawn PB	Checked TM	Approved AS
-------------	---------------	----------------

Job No 560	Drawing No IRAL-1054	Rev K01
---------------	-------------------------	------------