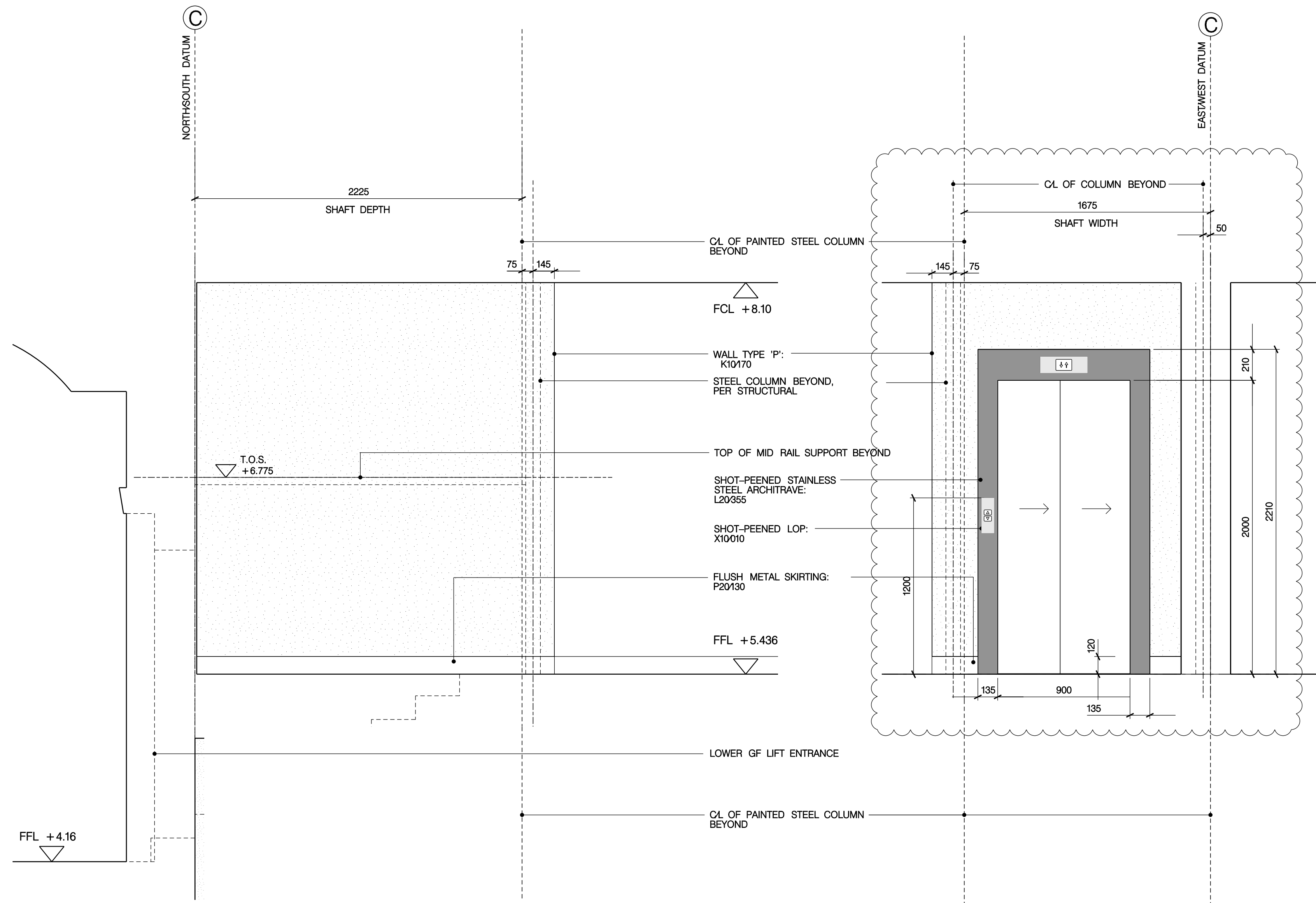
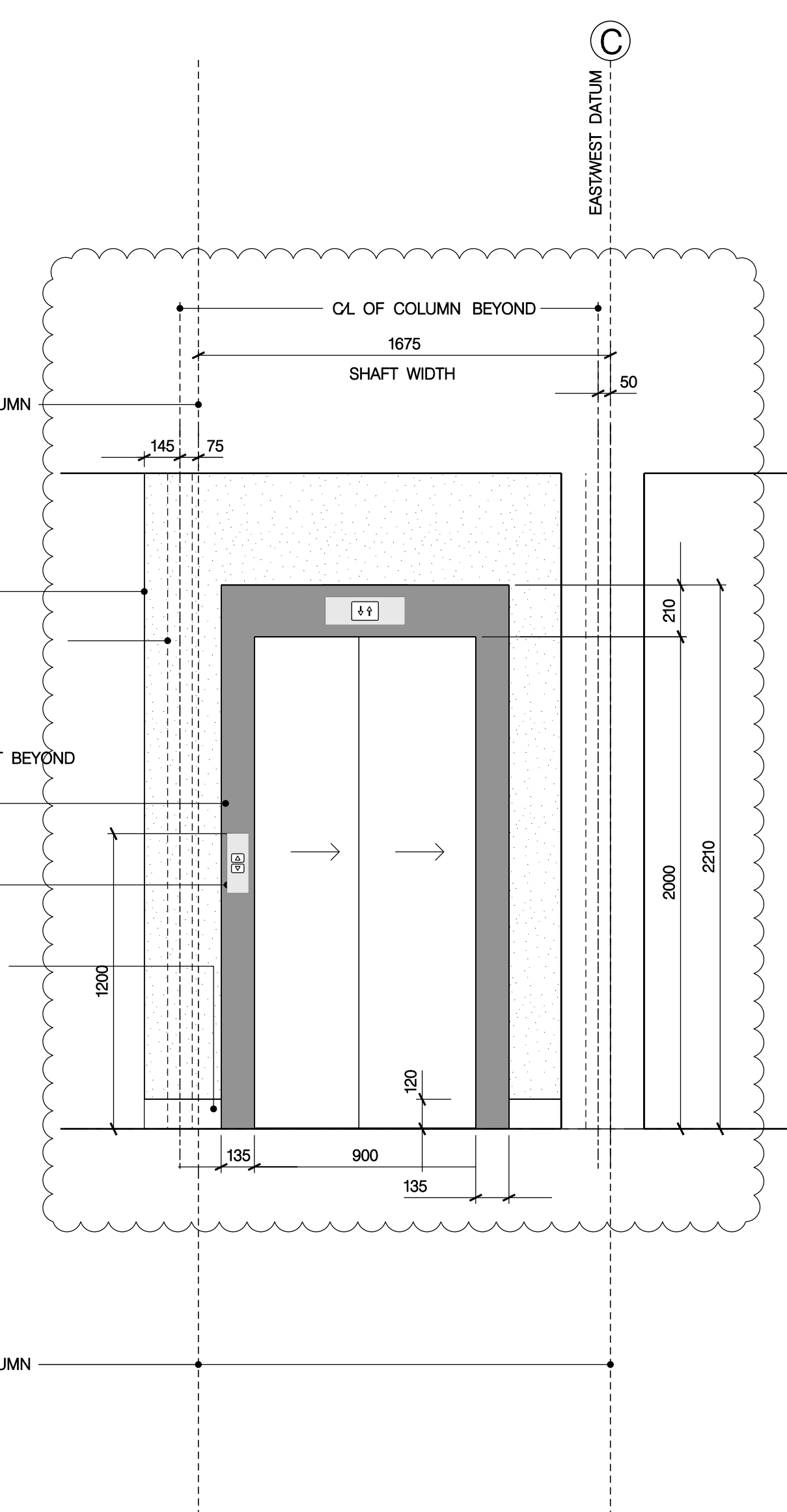


01
1055 EAST ELEVATION
GROUND FLOOR LIFT ENTRANCE



02
1055 NORTH ELEVATION
UPPER GROUND FLOOR LIFT



03
1055 WEST ELEVATION
UPPER GROUND FLOOR LIFT ENTRANCE

GENERAL NOTES

- GN1. DRAWINGS TO BE READ IN CONJUNCTION WITH ALL ENGINEERS' & SPECIALISTS' DRAWINGS & ALL SPECIFICATIONS.
- GN2. DO NOT SCALE FROM THIS DRAWING.
- GN3. ALL DIMENSIONS TO BE VERIFIED ON SITE. FIGURED DIMENSIONS TO TAKE PREFERENCE ON THOSE SCALED.
- GN4. ALL LEVELS TO BE TO ORDNANCE DATUM UNLESS OTHERWISE SPECIFIED.
- GN5. DRAWINGS ARE THE PROPERTY OF IAN RITCHIE ARCHITECTS LTD. AND ARE ISSUED ON THE CONDITION THEY ARE NOT REPRODUCED, RETAINED OR DISCLOSED TO ANY UNAUTHORISED PERSON, EITHER WHOLLY OR IN PART WITHOUT WRITTEN CONSENT OF IAN RITCHIE ARCHITECTS LTD.
- GN6. ALL SERVICES SHOWN ARE INDICATIVE WORKS TO BE COORDINATED WITH BUILDERS WORK AND INSTALLATION DRAWINGS.

DETAIL NOTES

- DN1. FOR FULL SET OUT OF ARCHITRAVE, LOP'S AND LIP'S, REFER TO IRAL-2103,2104,2105 AND LIFT SUPPLIERS DRAWINGS

LEGEND

- EXISTING BUILDING FABRIC TO BE RETAINED
- NEW BLOCKWORK
- NEW BRICKWORK
- AMENDMENT IN ABEYANCE

K01	06.03.08	PB	Architrave updated
K02	19.01.09	PB	General updates. Glass removed from doors.
F01	12.09.08	PB	FIRST ISSUE - SEE NOTE 1
Rev	Date	By	Description

Job Title
NORTH HOUSE

Drawing Title
Lift
Ground Floor
Sheet 2

IAN RITCHIE ARCHITECTS
110 Three Colt Street London E14 8AZ
Tel: 020 7338 1100 Fax: 020 7338 1199

0 200mm 400mm 600mm 800mm

Status
Information
CONSTRUCTION

Scale
1:20 [A1]
Date
12.09.08

Drawn PB	Checked TM	Approved AS
-------------	---------------	----------------

Job No 560	Drawing No IRAL-1055	Rev K01
---------------	-------------------------	------------