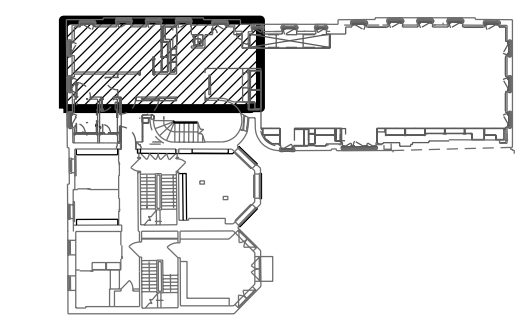


- GENERAL NOTES**
- GN1. DRAWINGS TO BE READ IN CONJUNCTION WITH ALL ENGINEERS' & SPECIALISTS' DRAWINGS & ALL SPECIFICATIONS.
- GN2. DO NOT SCALE FROM THIS DRAWING.
- GN3. ALL DIMENSIONS TO BE VERIFIED ON SITE. FIGURED DIMENSIONS TO TAKE PREFERENCE ON THOSE SCALED.
- GN4. ALL LEVELS TO BE TO ORDINANCE DATUM UNLESS OTHERWISE SPECIFIED.
- GN5. DRAWINGS ARE THE PROPERTY OF IAN RITCHIE ARCHITECTS LTD. AND ARE ISSUED ON THE CONDITION THEY ARE NOT REPRODUCED, RETAINED OR DISCLOSED TO ANY UNAUTHORISED PERSON, EITHER WHOLLY OR IN PART WITHOUT WRITTEN CONSENT OF IAN RITCHIE ARCHITECTS LTD.
- GN6. ALL SERVICES SHOWN ARE INDICATIVE WORKS TO BE COORDINATED WITH BUILDERS WORK AND INSTALLATION DRAWINGS.
- DETAIL ARRANGEMENT NOTES**
1. REFER TO SHEETS IRAL-04xx, IRAL-05xx & IRAL-06xx FOR GENERAL ARRANGEMENTS AND ADDITIONAL NOTES AND DIMENSIONS.
2. REFER TO WSPS AND EOCs FOR STRUCTURAL, WSPD FOR UNDERGROUND DRAINAGE, KSAP FOR PUBLIC HEALTH, KSAM FOR MECHANICAL, KSAE FOR ELECTRICAL, KSAI FOR ICT.
3. FOR ACCESSORY MOUNTING, REFER TO IRAL-3000 AND IRAL-3001.
4. ALL DIMENSIONS TO FACE OF PLASTERBOARD UNLESS NOTED AS 'FINISHED', SETTING OUT 'CRITICAL' WHERE NOTED
- LEGEND**
- X: X000xx WALL TYPE: REFER TO IRAL-2220 & 2221 FOR TYPICAL DETAILS
- A: A- ACCESS PANEL/EXTERIOR A.P. NO. REFER TO SCHEDULE IRAL[K10]0001
- D: D- DOOR, EXTERIOR DOOR NO. REFER TO IRAL-2400, IRAL-2401
- Q: Q- HEATING/VENTILATION GRILLE/GAP NO.: REFER TO SCHEDULE IRAL[K10]0002
- W: W- WINDOW NO.: REFER TO SCHEDULE IRAL[L10]0001
- Fire Separation Rating: REFER TO IRAL-5000/IRAL-5001
- [+XX] ALLOWABLE TOLERANCE NOTIFY CA OF BUILT DIMENSIONS
- AMENDMENT IN ABEYANCE



THE FOLLOWING ITEMS ARE IN ABEYANCE:

- LOCATIONS OF ALL MISC. FITTINGS ARE IN ABEYANCE.
- SETTING OUT DIMENSIONS OF FITTED FURNITURE
- AS OTHERWISE NOTED.

K03	10.06.09	CR	Revised fitted furniture, added detail call-outs.
K02	20.06.09	OS	Fire Exit Storage updated
K01	18.03.09	AC	Annotation/Dimensions/References rechecked/detailed setting out added. Expansion joint located.
K00	19.03.09	OS	Stage 'K' issue
Rev	Date	By	Description

Job Title  
NORTH HOUSE

Drawing Title  
Detail Arrangements  
Room 206, 207, 208  
209, 211  
Sheet 2

**IAN RITCHIE ARCHITECTS**  
110 Three Colt Street London E14 8AZ  
Tel: 020 7338 1100 Fax: 020 7338 1199

0 200mm 400mm 600mm 800mm

Status  
Information  
**CONSTRUCTION**

Scale  
1:20 [A1]

Date  
20.12.07

Drawn  
BF

Checked  
TM

Approved  
AS

Job No  
560

Drawing No  
IRAL-1521

Rev  
K03

01  
1521

DETAILED REFLECTED CEILING PLAN  
ROOM 206 - CIRCULATION, ROOM 207 - MEETING, ROOM 208 - COPY, ROOM 209 - TEA POINT, ROOM 211 - CIRCULATION