

GENERAL NOTES

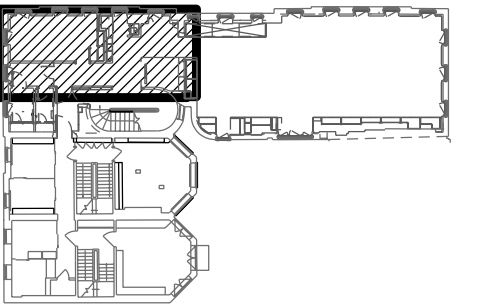
- GN1. DRAWINGS TO BE READ IN CONJUNCTION WITH ALL ENGINEERS' & SPECIALISTS' DRAWINGS & ALL SPECIFICATIONS.
- GN2. DO NOT SCALE FROM THIS DRAWING.
- GN3. ALL DIMENSIONS TO BE VERIFIED ON SITE. FIGURED DIMENSIONS TO TAKE PREFERENCE ON THOSE SCALED.
- GN4. ALL LEVELS TO BE TO ORDNANCE DATUM UNLESS OTHERWISE SPECIFIED.
- GN5. DRAWINGS ARE THE PROPERTY OF IAN RITCHIE ARCHITECTS LTD. AND ARE ISSUED ON THE CONDITION THEY ARE NOT REPRODUCED, RETAINED OR DISCLOSED TO ANY UNAUTHORISED PERSON, EITHER WHOLLY OR IN PART WITHOUT WRITTEN CONSENT OF IAN RITCHIE ARCHITECTS LTD.
- GN6. ALL SERVICES SHOWN ARE INDICATIVE WORKS TO BE COORDINATED WITH BUILDERS WORK AND INSTALLATION DRAWINGS.

DETAIL ARRANGEMENT NOTES

- REFER TO SHEETS IRAL-04xx, IRAL-05xx & IRAL-06xx FOR GENERAL ARRANGEMENTS AND ADDITIONAL NOTES AND DIMENSIONS.
- REFER TO WSPS AND EOCs FOR STRUCTURAL, WSPD FOR UNDERGROUND DRAINAGE, KSAP FOR PUBLIC HEALTH, KSAM FOR MECHANICAL, KSAE FOR ELECTRICAL, KSAI FOR ICT.
- FOR ACCESSORY MOUNTING, REFER TO IRAL-3000 AND IRAL-3001.
- ALL DIMENSIONS TO FACE OF PLASTERBOARD UNLESS NOTED AS 'FINISHED', SETTING OUT 'CRITICAL' WHERE NOTED

LEGEND

- X: X00xxx WALL TYPE: REFER TO IRAL-2220 & 2221 FOR TYPICAL DETAILS
- A: A-... EA: ACCESS PANEL/EXTERIOR A.P. NO. REFER TO SCHEDULE IRAL[K10]0001
- D: D-... ED: DOOR, EXTERIOR DOOR NO. REFER TO IRAL-2400, IRAL-2401
- Q: Q-... HEATING/VENTILATION GRILLE/GAP NO.: REFER TO SCHEDULE IRAL[K10]0002
- W: W-... WINDOW NO.: REFER TO SCHEDULE IRAL[L10]0001
- Fire Separation Rating: REFER TO IRAL-5000/IRAL-5001
- [+XXX] ALLOWABLE TOLERANCE NOTIFY CA OF BUILT DIMENSIONS
- Amendment: IN ABEYANCE



K05	10.07.09	TM	Detail Tags added, typical notes added to Luminaire Room 208.
K04	03.07.08	TM	Luminaire Type 04 Location/Detail, ASP Detail Tag added.
K03	10.06.08	CR	Revised fixed furniture, added detail call-outs.
K02	20.06.08	OS	Fire Exit Storage updated.
K01	18.03.08	AC	Annotation/Dimensions/References reviewed/checked. Detailed setting out added. Expansion joint located.
K00	19.03.08	OS	Stage 'K' issue.

Rev Date By Description

Job Title

NORTH HOUSE

Drawing Title

Detail Arrangements
Room 206, 207, 208
209, 211
Sheet 2

IAN RITCHIE ARCHITECTS

110 Three Colt Street London E14 8AZ
Tel: 020 7338 1100 Fax: 020 7338 1199

0 200mm 400mm 600mm 800mm

Status

Information

CONSTRUCTION

Scale

1:20 [A1]

Date

20.12.07

Drawn

BF

Checked

TM

Approved

AS

Job No

560

Drawing No

IRAL-1521

Rev

K05

01
1521

DETAILED REFLECTED CEILING PLAN
ROOM 206 - CIRCULATION, ROOM 207 - MEETING, ROOM 208 - COPY, ROOM 209 - TEA POINT, ROOM 211 - CIRCULATION