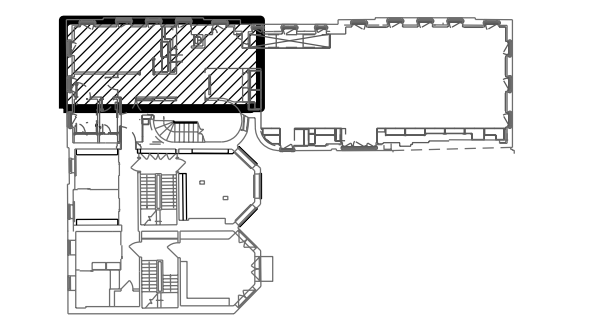


- GENERAL NOTES**
- GN1. DRAWINGS TO BE READ IN CONJUNCTION WITH ALL ENGINEERS' & SPECIALISTS' DRAWINGS & ALL SPECIFICATIONS.
- GN2. DO NOT SCALE FROM THIS DRAWING.
- GN3. ALL DIMENSIONS TO BE VERIFIED ON SITE. FIGURED DIMENSIONS TO TAKE PREFERENCE ON THOSE SCALED.
- GN4. ALL LEVELS TO BE TO ORDNANCE DATUM UNLESS OTHERWISE SPECIFIED.
- GN5. DRAWINGS ARE THE PROPERTY OF IAN RITCHIE ARCHITECTS LTD. AND ARE ISSUED ON THE CONDITION THEY ARE NOT REPRODUCED, RETAINED OR DISCLOSED TO ANY UNAUTHORISED PERSON, EITHER WHOLLY OR IN PART WITHOUT WRITTEN CONSENT OF IAN RITCHIE ARCHITECTS LTD.
- GN6. ALL SERVICES SHOWN ARE INDICATIVE WORKS TO BE COORDINATED WITH BUILDERS WORK AND INSTALLATION DRAWINGS.
- DETAIL ARRANGEMENT NOTES**
1. REFER TO SHEETS IRAL-04xx, IRAL-05xx & IRAL-06xx FOR GENERAL ARRANGEMENTS AND ADDITIONAL NOTES AND DIMENSIONS.
2. REFER TO WSPS AND EOCs FOR STRUCTURAL, WSPD FOR UNDERGROUND DRAINAGE, KSAP FOR PUBLIC HEALTH, KSAM FOR MECHANICAL, KSAE FOR ELECTRICAL, KSAI FOR ICT.
3. FOR ACCESSORY MOUNTING, REFER TO IRAL-3000 AND IRAL-3001.
4. ALL DIMENSIONS TO FACE OF PLASTERBOARD UNLESS NOTED AS 'FINISHED' SETTING OUT 'CRITICAL' WHERE NOTED
- LEGEND**
- X: X00000 WALL TYPE: REFER TO IRAL-2220 & 2221 FOR TYPICAL DETAILS
- A: A-0000 ACCESS PANEL/EXTERIOR A.P. NO.: REFER TO SCHEDULE IRAL[K10]0001
- D: D-0000 DOOR, EXTERIOR DOOR NO.: REFER TO IRAL-2400, IRAL-2401
- Q: Q-0000 HEATING/VENTILATION GRILLE/GAP NO.: REFER TO SCHEDULE IRAL[K10]0002
- W: W-0000 WINDOW NO.: REFER TO SCHEDULE IRAL[L10]0001
- Fire Separation Rating: REFER TO IRAL-5000/IRAL-5001
- [+XXX] ALLOWABLE TOLERANCE NOTIFY CA OF BUILT DIMENSIONS
- Amendment: IN ABEYANCE



THE FOLLOWING ITEMS ARE IN ABEYANCE:

- LOCATIONS OF ALL MISC. FITTINGS ARE IN ABEYANCE.
- SETTING OUT DIMENSIONS OF FITTED FURNITURE
- AS OTHERWISE NOTED.

K02	20.06.08	OS	Fire Exit Storage updated
K01	18.03.08	AC	Annotation/Dimensions/References rechecked/checked. Detailed setting out added. Expansion joint located.
K00	19.03.08	OS	Stage 'K' issue
Rev	Date	By	Description

Job Title  
**NORTH HOUSE**

Drawing Title  
**Detail Arrangements  
Room 206, 207, 208  
209, 211  
Sheet 2**

**IAN RITCHIE ARCHITECTS** ®  
110 Three Colt Street London E14 8AZ  
Tel: 020 7338 1100 Fax: 020 7338 1199

0 200mm 400mm 600mm 800mm

Status  
Information  
**CONSTRUCTION**

Scale  
**1:20 [A1]**

Date  
**20.12.07**

Drawn  
BF

Checked  
TM

Approved  
AS

Job No  
**560**

Drawing No  
**IRAL-1521**

Rev  
**K02**