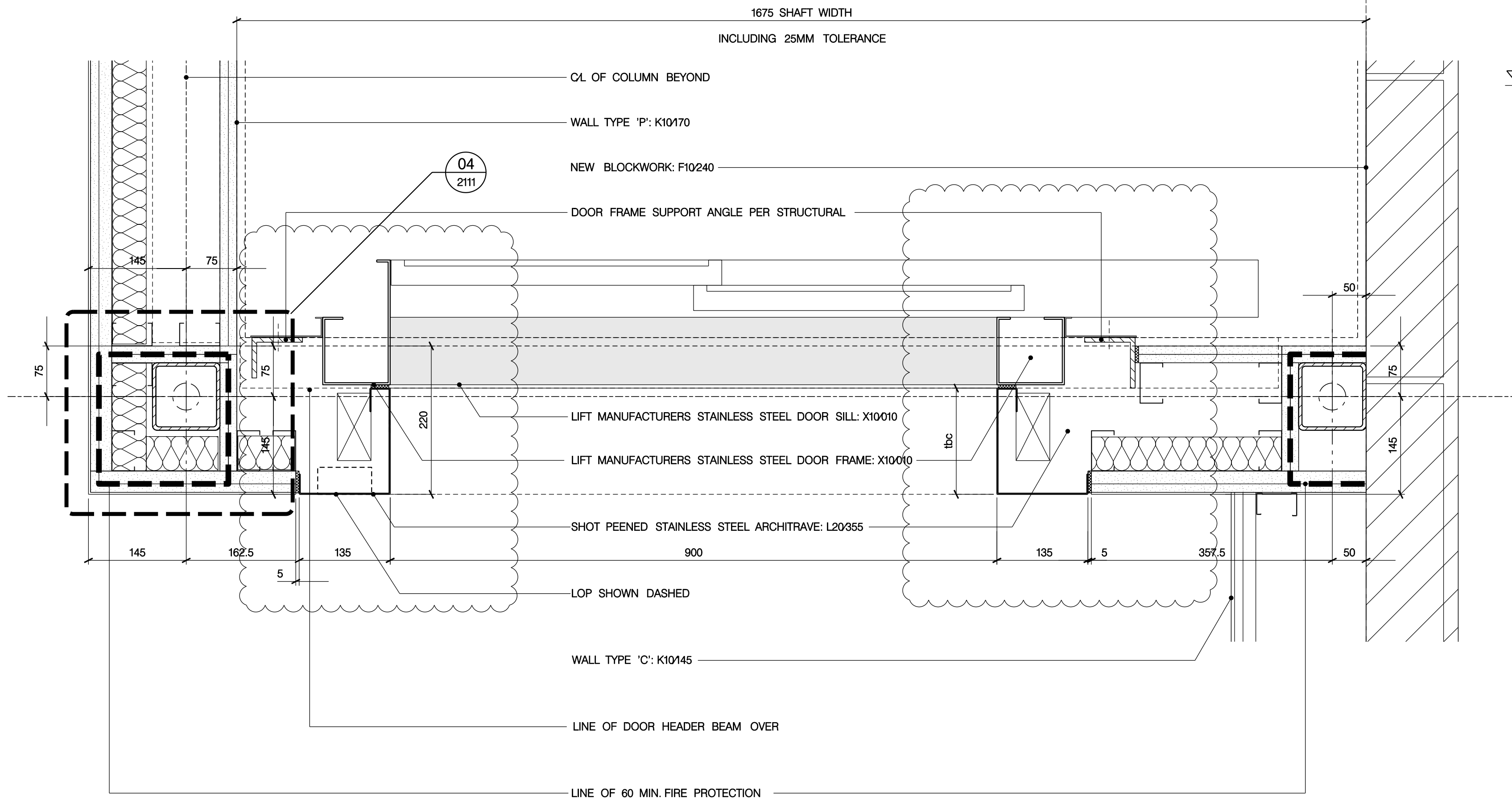


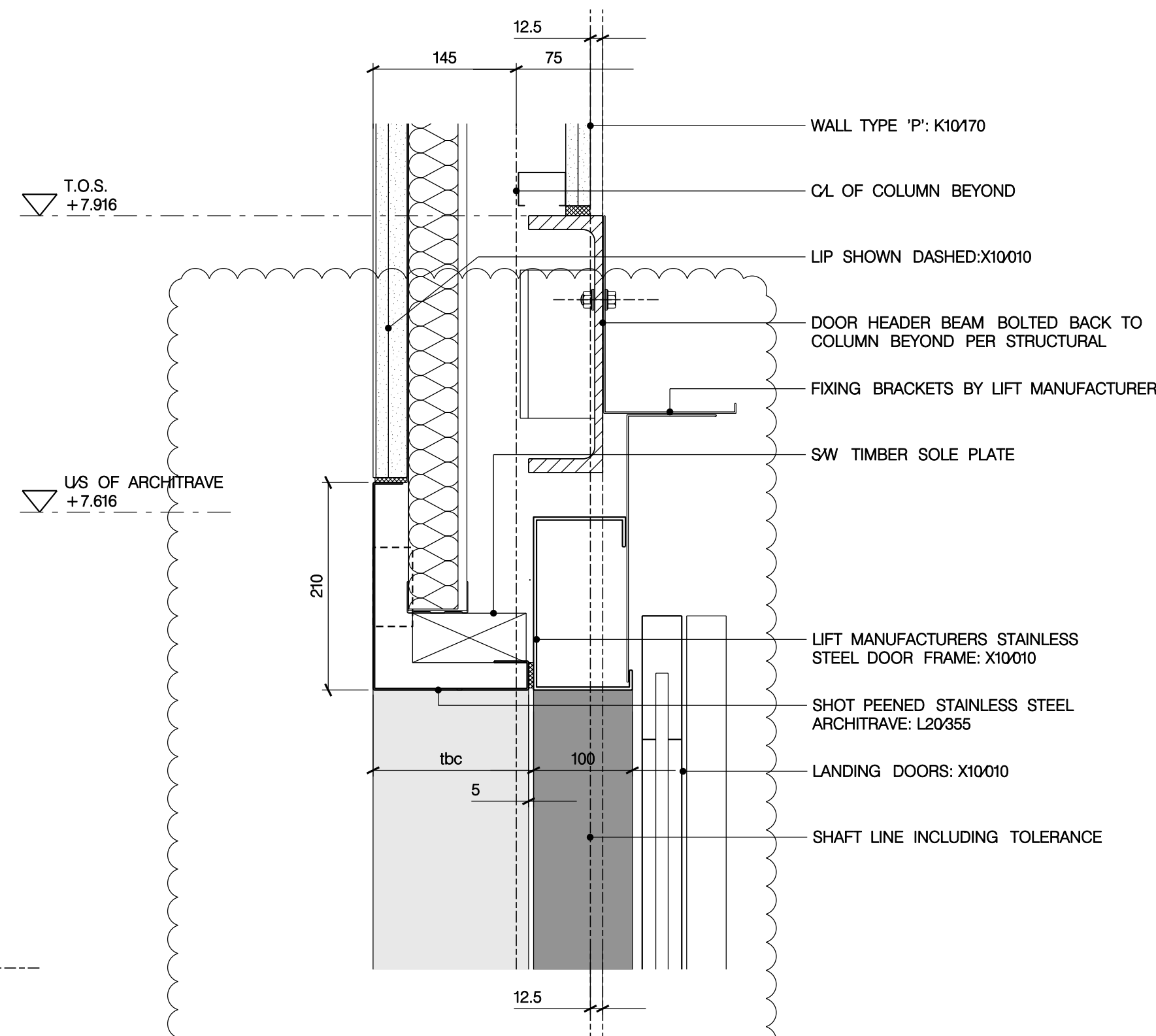
NOTE: ALL STRUCTURAL LEVELS GIVEN
ARE INDICATIVE AND MUST BE CHECKED
AGAINST STRUCTURAL SET + EXISTING
SITE CONDITIONS

0203
2111

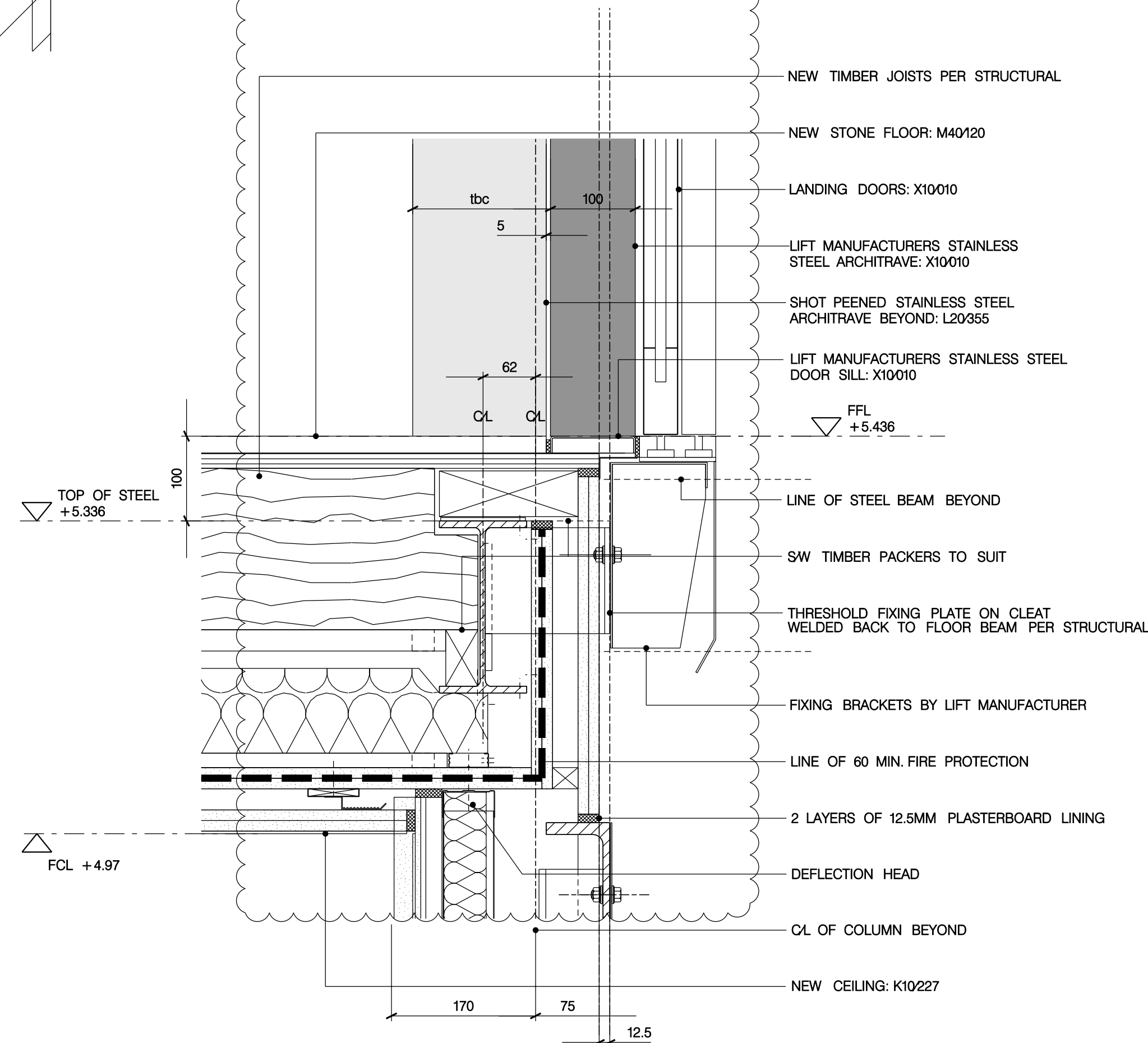


02
2104

LIFT-PLAN DETAIL
DOOR ARCHITRAVE



LIFT-SECTION DETAIL
DOOR HEAD



LIFT-SECTION DETAIL
DOOR SILL

GENERAL NOTES

- GN1. DRAWINGS TO BE READ IN CONJUNCTION WITH ALL ENGINEERS' & SPECIALISTS' DRAWINGS & ALL SPECIFICATIONS
- GN2. DO NOT SCALE FROM THIS DRAWING.
- GN3. ALL DIMENSIONS TO BE VERIFIED ON SITE. FIGURED DIMENSIONS TO TAKE PREFERENCE ON THOSE SCALED.
- GN4. ALL LEVELS TO BE TO ORDINANCE DATUM UNLESS OTHERWISE SPECIFIED.
- GN5. DRAWINGS ARE THE PROPERTY OF IAN RITCHIE ARCHITECTS LTD. AND ARE ISSUED ON THE CONDITION THEY ARE NOT REPRODUCED, RETAINED OR DISCLOSED TO ANY UNAUTHORISED PERSON, EITHER WHOLLY OR IN PART WITHOUT WRITTEN CONSENT OF IAN RITCHIE ARCHITECTS LTD.
- GN6. ALL SERVICES SHOWN ARE INDICATIVE. WORKS TO BE COORDINATED WITH BUILDERS WORK AND INSTALLATION DRAWINGS.

DETAIL NOTES

- DN1. FOR LOCATION, REFER BACK TO GA DRAWINGS
- DN2. FOR FULL SET OUT OF ARCHITRAVE, LOP'S AND LIP'S, REFER TO IRAL-2103,2104,2105 AND LIFT SUPPLIERS DRAWINGS

LEGEND

- AMENDMENT
- IN ABEYANCE

K01	06.03.08	PB	Door frame updated
K02	19.01.09	PB	General Update. Glass removed from doors. LOP enclosure detail added.
F01	12.09.08	PB	Final Issue
Rev	Date	By	Description

Job Title
NORTH HOUSE

Drawing Title

Lift
Raised Ground Floor
Door Details

IAN RITCHIE ARCHITECTS ®
110 Three Colt Street London E14 8AZ
Tel: 020 7338 1100 Fax: 020 7338 1199

0 50mm 100mm 150mm 200mm

Status
CONSTRUCTION

Scale
1:5 [A1]

Date
12.09.08

Drawn PB	Checked TM	Approved IR
-------------	---------------	----------------

Job No 560	Drawing No 2111	Rev K01
---------------	--------------------	------------