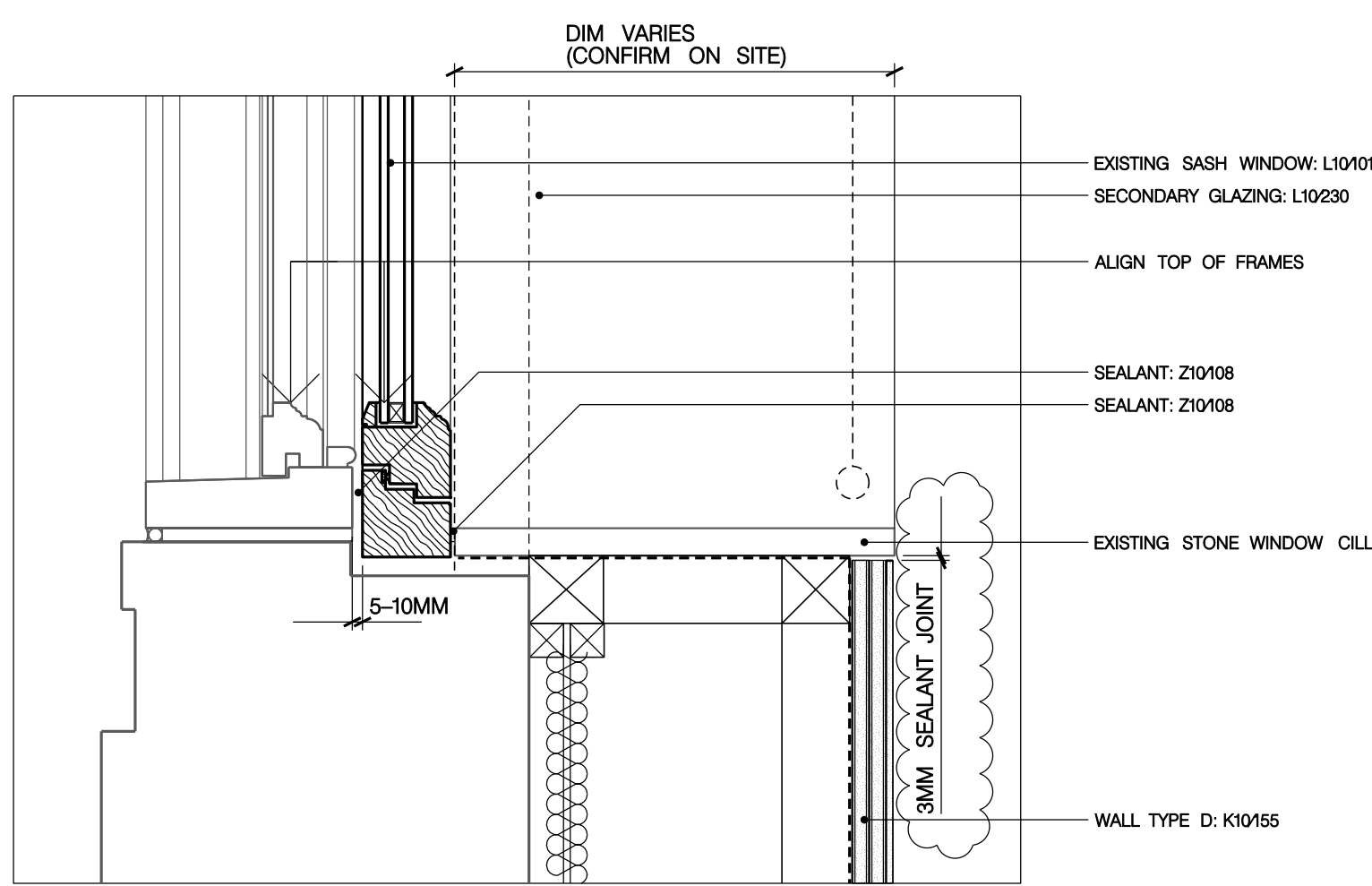
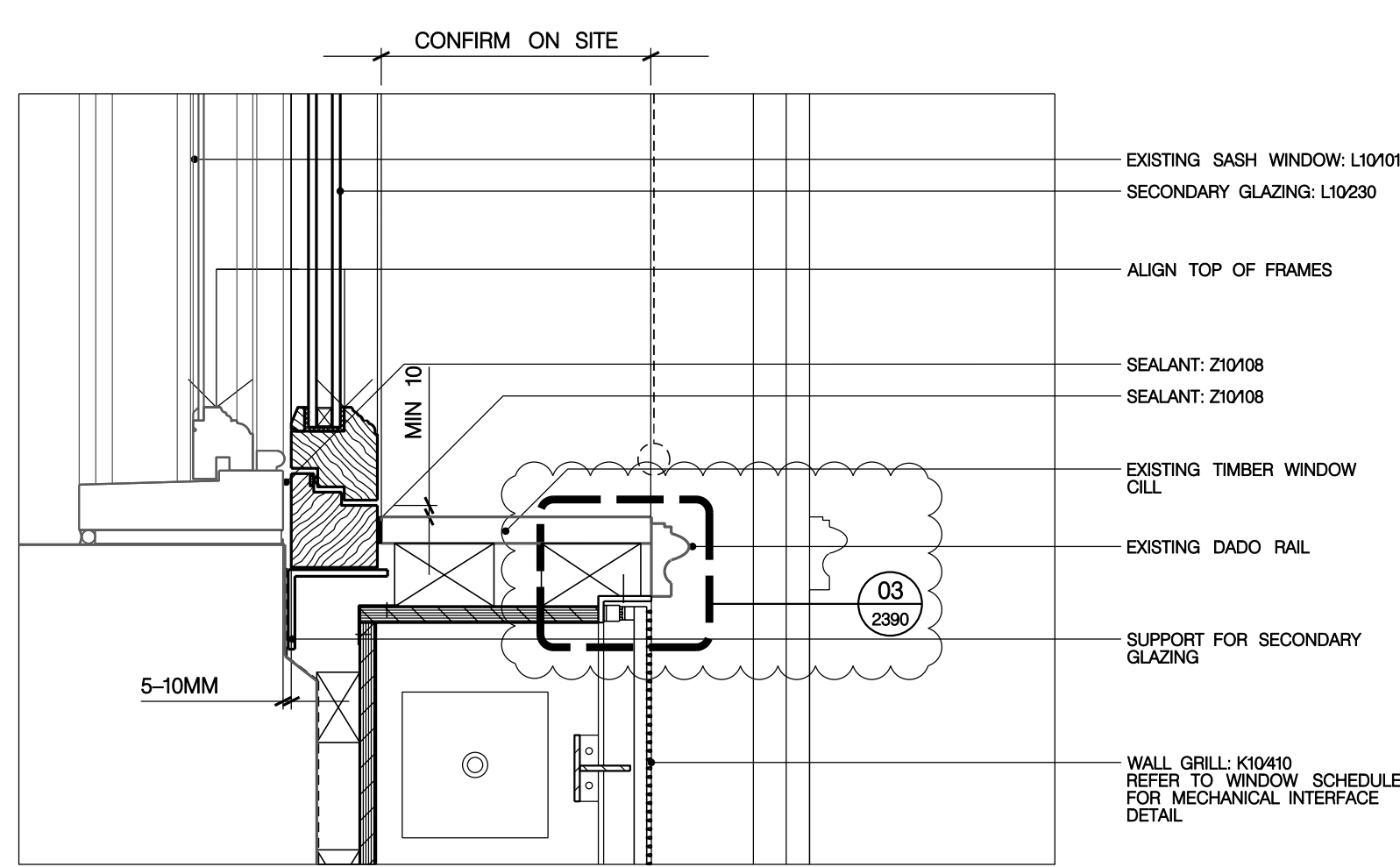


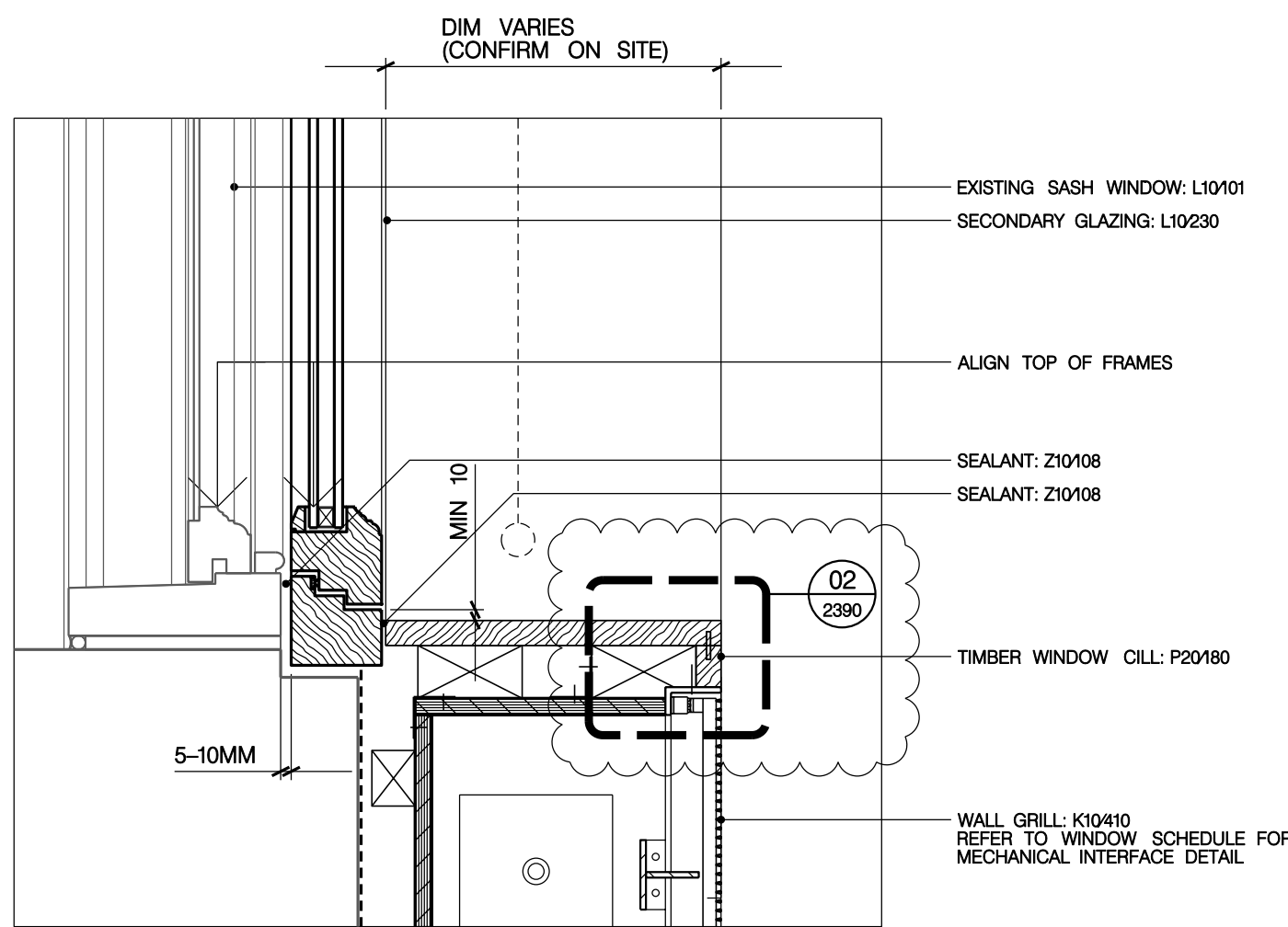
01
2322
SECONDARY GLAZING CILL
SECONDARY GLAZING TYPICAL CILL (L10230)



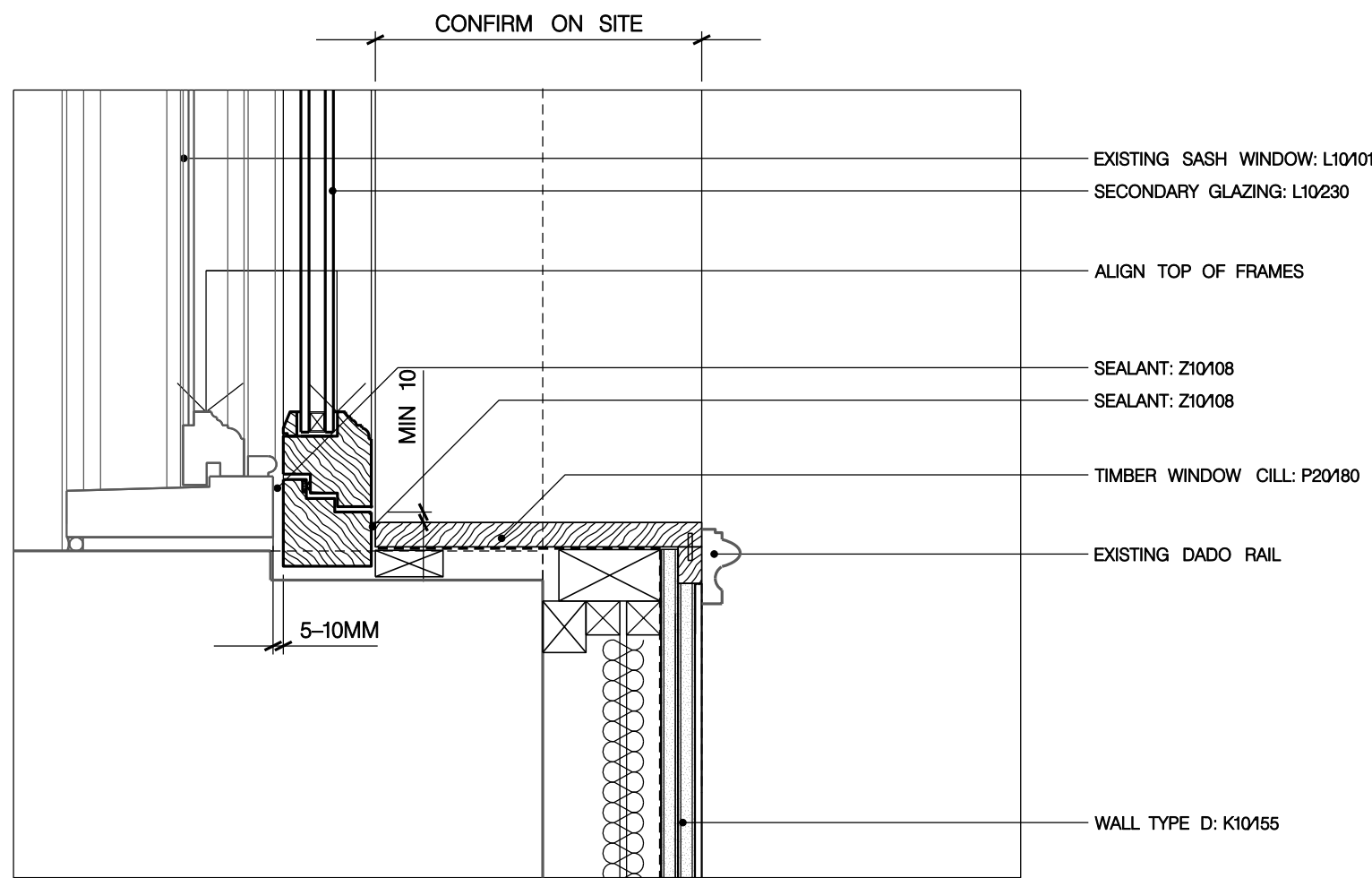
02
2322
SECONDARY GLAZING CILL
WINDOW TYPE S03 ROOM G04 (L10230)



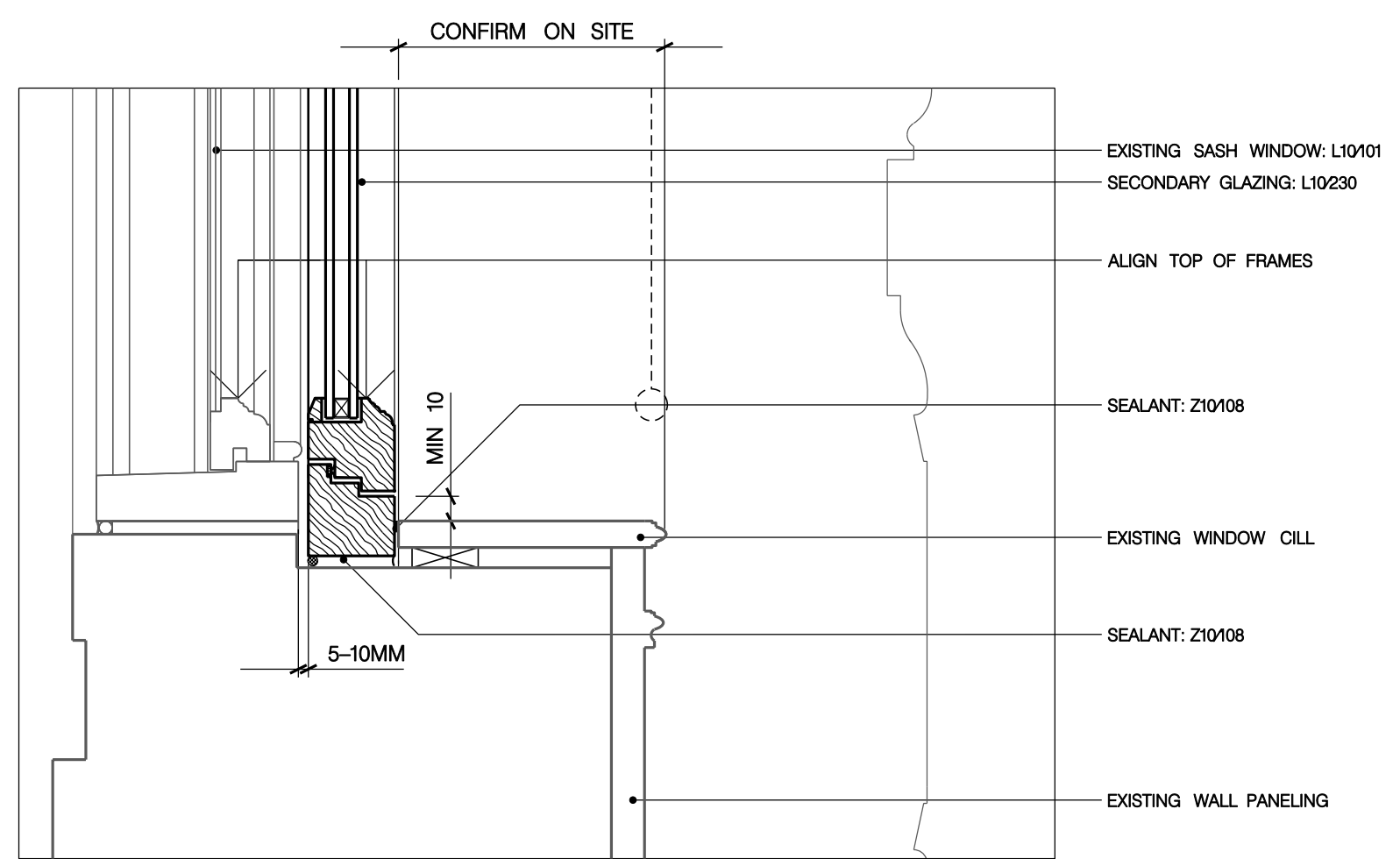
03
2322
SECONDARY GLAZING CILL
WINDOW TYPE S07 ROOM 108 (L10230)



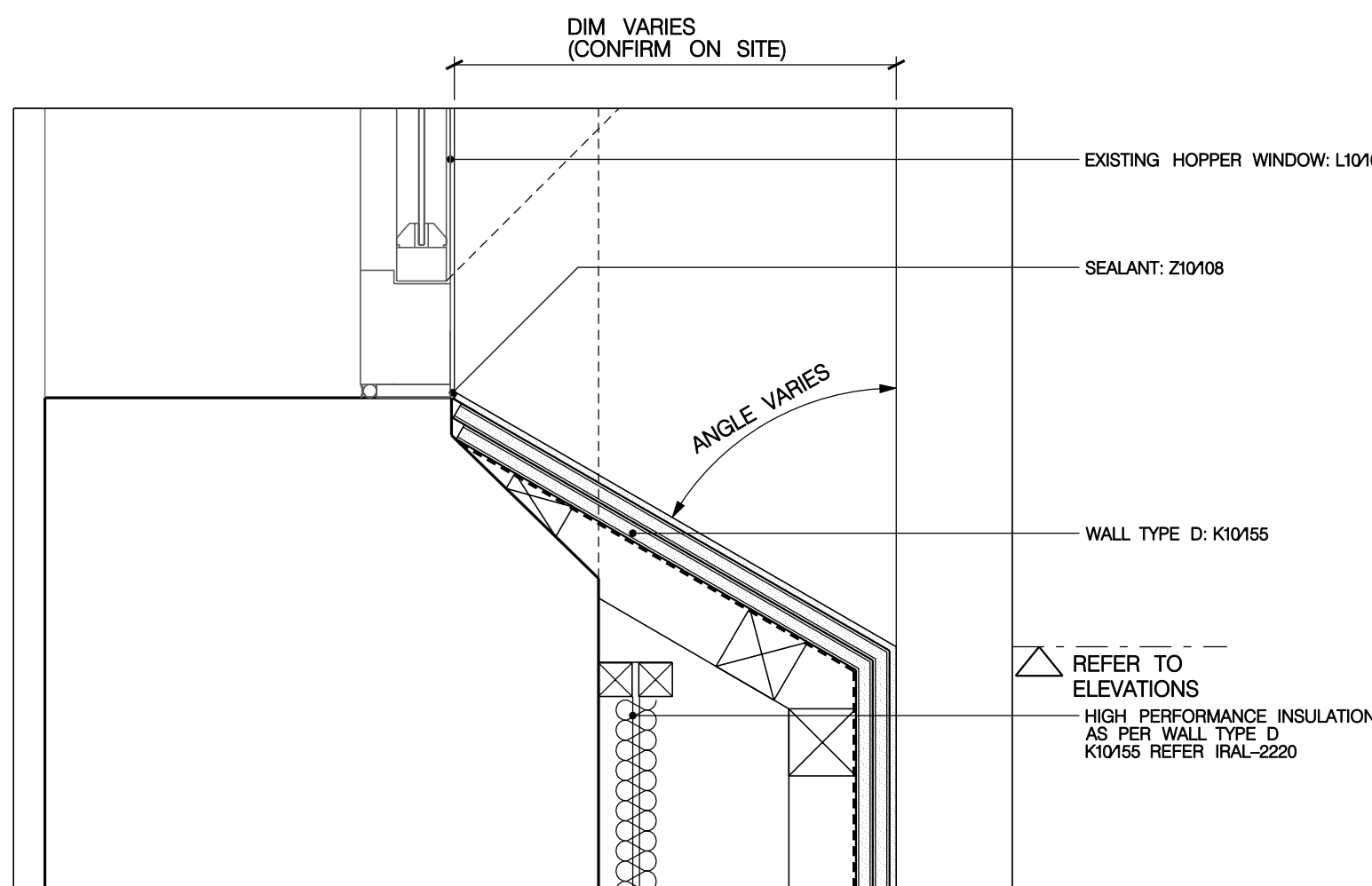
04
2322
SECONDARY GLAZING CILL
WINDOW TYPE S07 ROOM 108 (L10230)



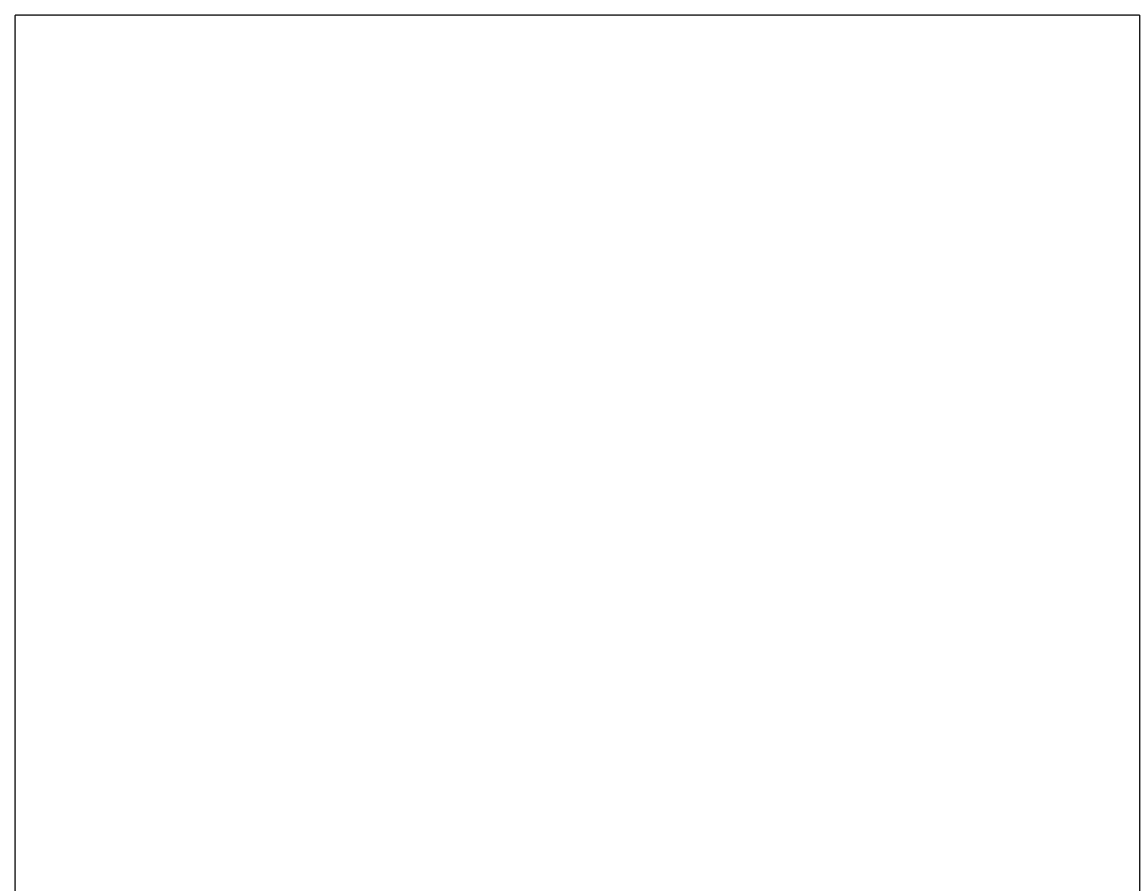
05
2322
SECONDARY GLAZING CILL
WINDOW TYPE S07 ROOM 108 (W-122)



06
2322
SECONDARY GLAZING CILL
WINDOW TYPE S03 ROOM G09 (L10230)



10
2322
WINDOW CILL
WINDOW TYPE E01 (L10230)



11
2322
WINDOW CILL
WINDOWS W-301-E & W-302-E

GENERAL NOTES

- GN1. DRAWINGS TO BE READ IN CONJUNCTION WITH ALL ENGINEERS' & SPECIALISTS' DRAWINGS & ALL SPECIFICATIONS.
- GN2. DO NOT SCALE FROM THIS DRAWING.
- GN3. ALL DIMENSIONS TO BE VERIFIED ON SITE. FIGURED DIMENSIONS TO TAKE PREFERENCE ON THOSE SCALED.
- GN4. ALL LEVELS TO BE TO ORDINANCE DATUM UNLESS OTHERWISE SPECIFIED.
- GN5. DRAWINGS ARE THE PROPERTY OF IAN RITCHIE ARCHITECTS LTD. AND ARE NOT REPRODUCED, RETAINED OR DISCLOSED TO ANY UNAUTHORISED PERSON, EITHER WHOLLY OR IN PART WITHOUT WRITTEN CONSENT OF IAN RITCHIE ARCHITECTS LTD.
- GN6. ALL SERVICES SHOWN ARE INDICATIVE. WORKS TO BE COORDINATED WITH BUILDERS WORK AND INSTALLATION DRAWINGS.

DETAIL NOTES

1. FOR WINDOW TYPES REFER TO DRAWINGS IRAL-231X SERIES.
2. REFER TO WINDOWBLIND SCHEDULE IRAL-NHL10-1001.
3. STRUCTURAL OPENINGS AND EXISTING WINDOW DIMENSIONS TO BE CONFIRMED ON SITE BY CONTRACTOR.
4. FINISHED CEILING LEVELS TO BE CONFIRMED WHERE NOTED BY CONTRACTOR PRIOR TO MANUFACTURE OF WINDOWS.

LEGEND

- AMENDMENT
- IN ABEYANCE

K01	14.07.08	AC	04: Sill detail amended. Detail references added.
K00	02.03.08	AC	STAGE K: ISSUE. Content of page changed.
F00	31.07.06	UY	Additional details and annotation added
E01	04.04.08	UY	Detail added
E00	31.03.08	UY	First issue
Rev	Date	By	Description

Job Title
NORTH HOUSE

Drawing Title
Details -
Secondary glazing/
Windows/Blinds
Sheet 3

IAN RITCHIE ARCHITECTS ©
110 Three Colt Street London E14 8AZ
Tel: 020 7338 1100 Fax: 020 7338 1199

0 50mm 100mm 150mm 200mm

Status
CONSTRUCTION

Scale
1:5 [A1]

Date
31.03.08

Drawn UY	Checked TM	Approved AS
-------------	---------------	----------------

Job No 560	Drawing No IRAL-2322	Rev K01
---------------	-------------------------	------------