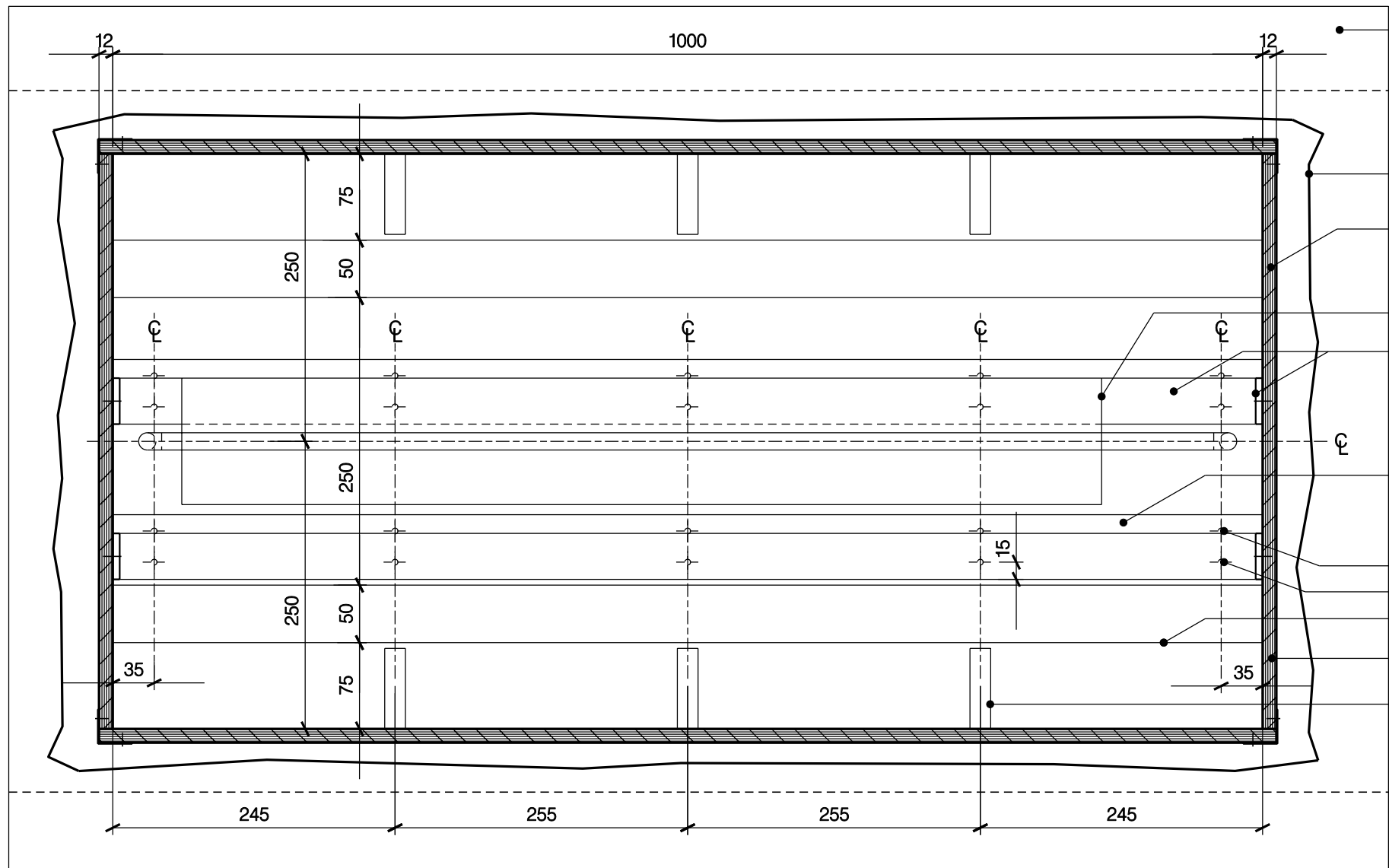


- EXISTING MARBLE COLUMN
- EXISTING STONE FLOOR C40b/110
- EXISTING RC CONCRETE
- 3 MM EXPANSION JOINT FILLER Z22107
- 50 X 38 MM NEW TIMBER BATTEN FRAMING G20240
- LOCATE VALVE/EQUIPMENT SO THAT THEY ARE NOT VISIBLE IN PLENUM BOX OR WITHIN ROOM B13. COORDINATE WITH OTHER SERVICES.
- 18 MM MDF N10600
PAINT FINISH M60140
- NATURAL CONVECTOR PER MECHANICAL
- 12 MM PLYWOOD K11340 PAINT FINISH M60142
- PIPEWORK PER MECHANICAL
- 2x ALUMINIUM Z BAR CLEAT FIXED TO REMOVABLE PANEL AND FLAT STEEL
LAMETALS.CO.UK LA213 OR EQUIVALENT APPROVED
- 40x6 MM PAINTED FLAT STEEL FIXED TO PLENUM BOX
PAINT FINISH M60131
- 12 MM MDF N10600
PAINT FINISH M60140
- USE EXISTING WALL RECESS. AMEND EXISTING MASONRY AS REQUIRED TO SUIT INSTALLATION.
- 2 X 12.5 MM PLASTERBOARD K10105
SKIM COAT K10680
- PLYWOOD STIFFENER K11340
PAINT FINISH M60142
- AIRTIGHT PLENUM BOX K11340
PAINT FINISH M60142
- EXISTING STONE FLOOR C40b/110
- DRILL HOLES FOR PIPEWORK THROUGH EXISTING MASONRY/CONCRETE AS REQUIRED
SEAL WITH FIRE STOPPING P12150

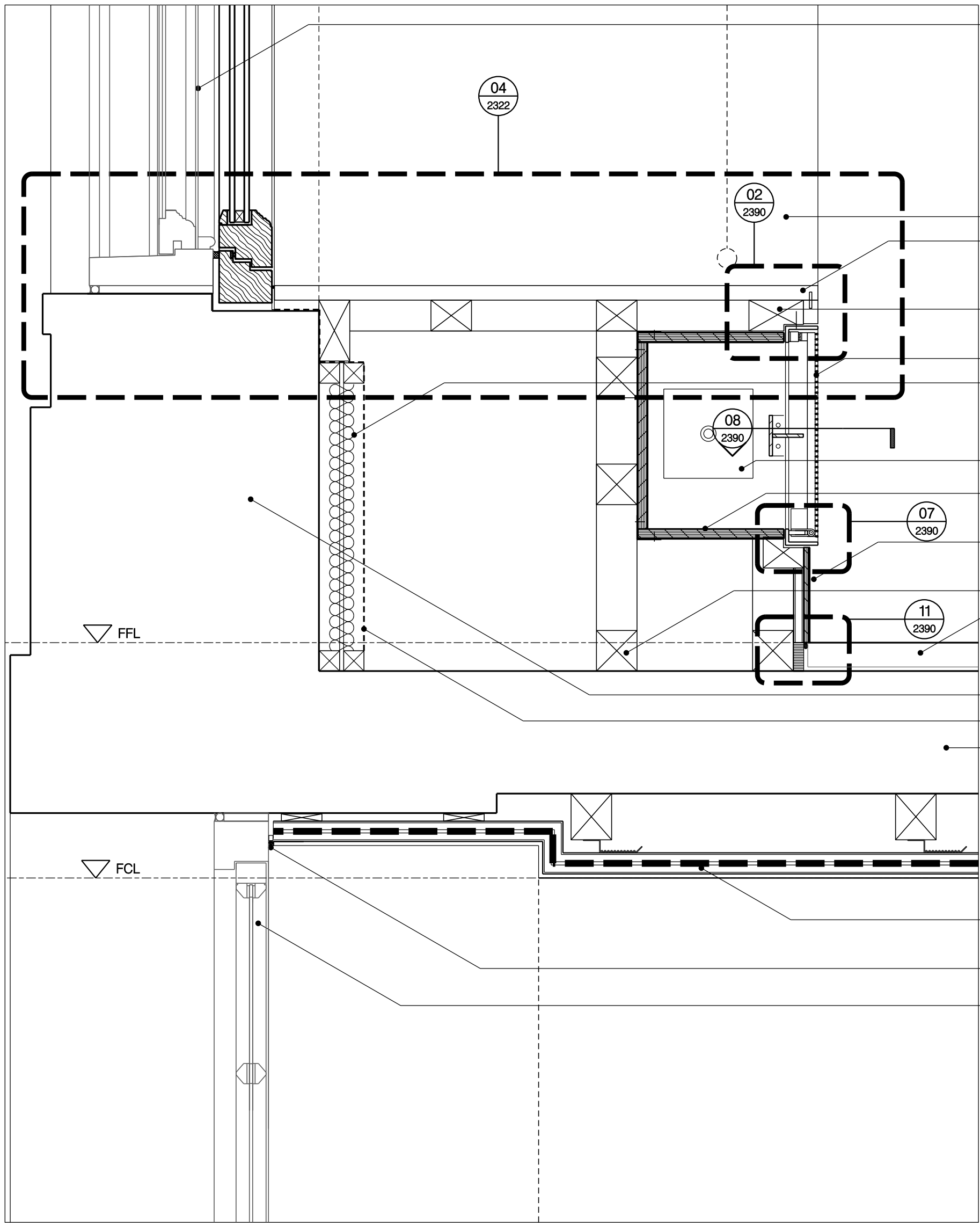
01
2361

N-S SECTIONAL DETAIL
PLENUM BOX INTERFACE DETAIL G-G07-2



03
2361

E-W SECTIONAL DETAIL
PLENUM BOX INTERFACE DETAIL G-G07-2



- EXISTING WINDOW W-G09
- MAKE GOOD AT OPENING SW04202
- NEW TIMBER WINDOW SILL P20180
FLUSH WITH FACE OF FINISHED WALL
- 38 X 75 MM NEW TIMBER BATTEN G20240
CUT TO SUIT WALL GRILLE
- WALL GRILLE REFER IRAL-2356 FIXED TO TIMBER BATTEN
- HIGH PERFORMANCE INSULATION AS PER WALL
TYPE D REFER IRAL-2220
- HEATING CONVECTOR PER MECHANICAL
- WINDOW BOX REFER IRAL-2341
- METAL SKIRTING: P20120
- 50 X 50 MM NEW TIMBER BATTEN FRAMING G20240
- EXISTING STONE FLOOR C40b/110
- EXISTING MASONRY WALL
- VAPOUR CONTROL BARRIER K10291
- EXISTING CONCRETE FLOOR
- CEILING SYSTEM K10218
REFER IRAL-092215
- SEALANT JOINT Z22108
- EXISTING WINDOW W-B13

02
2361

N-S SECTIONAL DETAIL
WINDOW HEAD W-B13 / WINDOW SILL W-G13



04
2361

ELEVATION DETAIL
PLENUM BOX INTERFACE DETAIL G-G07-2

GENERAL NOTES

- GN1. DRAWINGS TO BE READ IN CONJUNCTION WITH ALL ENGINEERS' & SPECIALISTS' DRAWINGS & ALL SPECIFICATIONS
- GN2. DO NOT SCALE FROM THIS DRAWING.
- GN3. ALL DIMENSIONS TO BE VERIFIED ON SITE. FIGURED DIMENSIONS TO TAKE PREFERENCE ON THOSE SCALED.
- GN4. ALL LEVELS TO BE TO ORDINANCE DATUM UNLESS OTHERWISE SPECIFIED.
- GN5. DRAWINGS ARE THE PROPERTY OF IAN RITCHIE ARCHITECTS LTD. AND ARE ISSUED ON THE CONDITION THEY ARE NOT REPRODUCED, RETAINED OR DISCLOSED TO ANY UNAUTHORISED PERSON, EITHER WHOLLY OR IN PART WITHOUT WRITTEN CONSENT OF IAN RITCHIE ARCHITECTS LTD.
- GN6. ALL SERVICES SHOWN ARE INDICATIVE. WORKS TO BE COORDINATED WITH BUILDERS WORK AND INSTALLATION DRAWINGS.

DETAIL NOTES

1. READ DRAWING IN CONJUNCTION WITH DRAWINGS AS PER DETAIL NOTES 2-9.
2. GA DRAWINGS REFER IRAL-04X SERIES.
3. DETAIL LOCATIONS AND HORIZONTAL SETTING CUT DIMENSIONS REFER IRAL-1000 TO IRAL-1699.
4. WINDOW DETAILS REFER IRAL-2300 TO IRAL-2324 AND SCHEDULE IRAL-NHL101001.
5. SKIRTING DETAILS REFER IRAL-2330 TO IRAL-2336.
6. WINDOW BOX DETAILS REFER IRAL-2340 TO IRAL-2354.
7. GRILLE DETAILS REFER IRAL-2355 TO IRAL-2359 AND SCHEDULE IRAL-NHK101002.
8. CEILING DETAILS REFER IRAL-2215 TO IRAL-2217.
9. WALL TYPE DETAILS REFER IRAL-2220 TO IRAL-2224.

LEGEND

- AMENDMENT
- IN ABEYANCE

K03	11.12.09	OS	Details 01, 03, 04 added.
K02	14.07.09	AC	Redundant references and drawings 01, 03, 04 removed, detail tags added, minor drawing amended.
K01	02.03.09	OS	Detail references added. Annotation amended.
K00	19.01.09	OS	First issue.

Rev	Date	By	Description
Job Title			
NORTH HOUSE			

Drawing Title	
Details – Window Interfaces Basement/Ground Floor Sheet 2	

IAN RITCHIE ARCHITECTS ©
110 Three Colt Street London E14 8AZ
Tel: 020 7338 1100 Fax: 020 7338 1199

0 50mm 100mm 150mm 200mm

Status		
CONSTRUCTION		
Scale	1:5 [A1]	Date 19.01.09
Drawn EH	Checked TM	Approved AS
Job No 560	Drawing No IRAL-2361	Rev K03