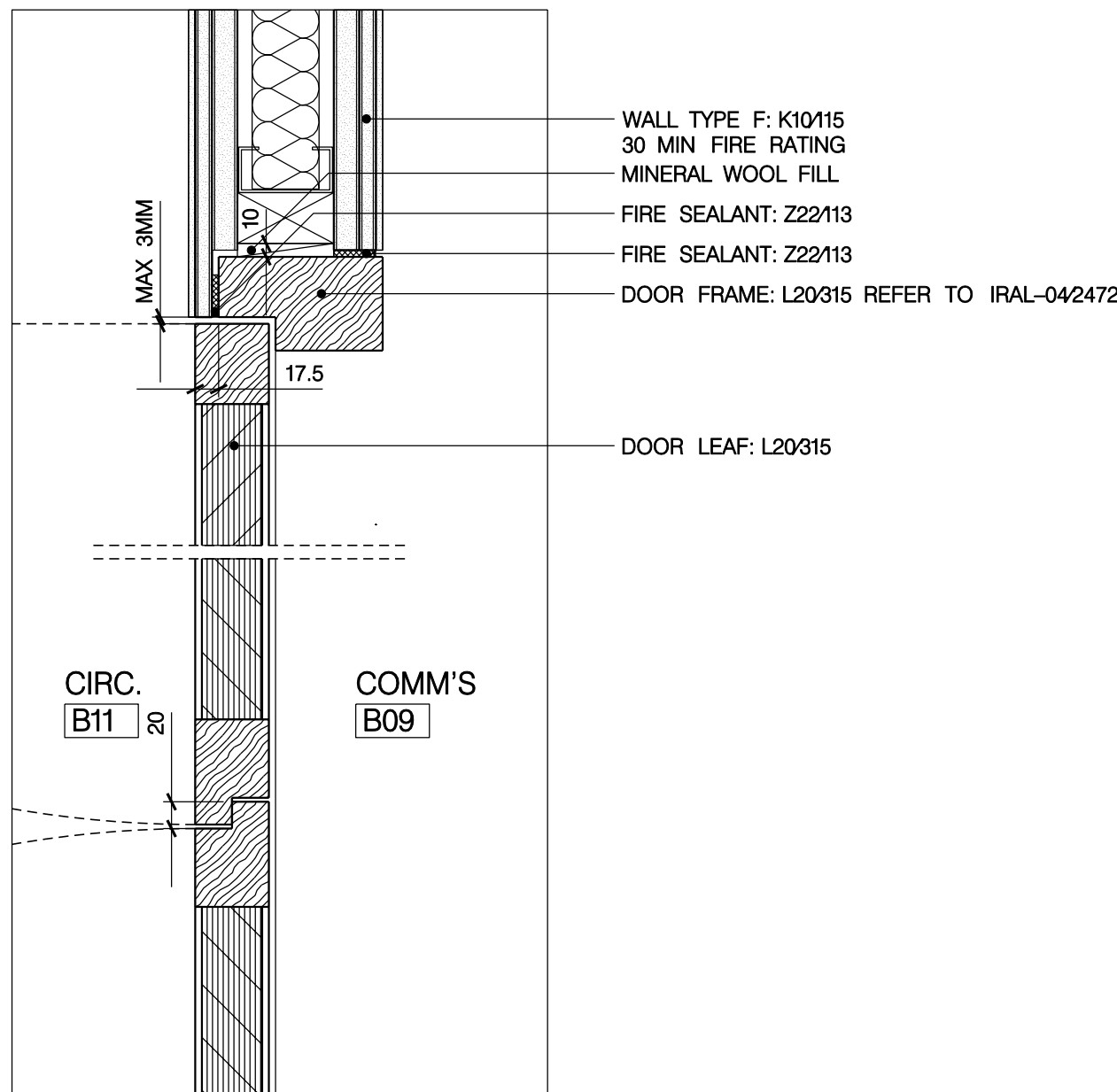
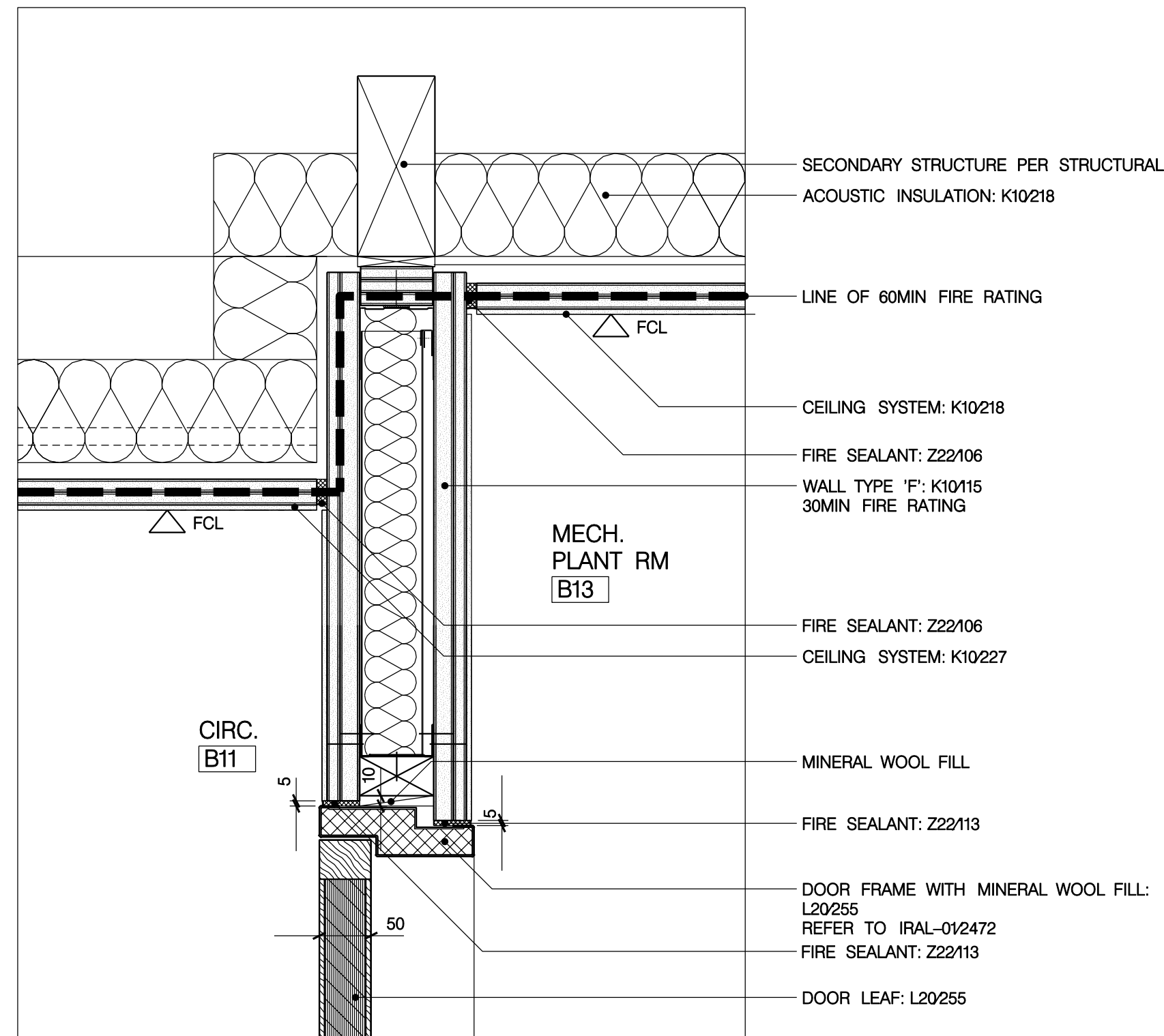


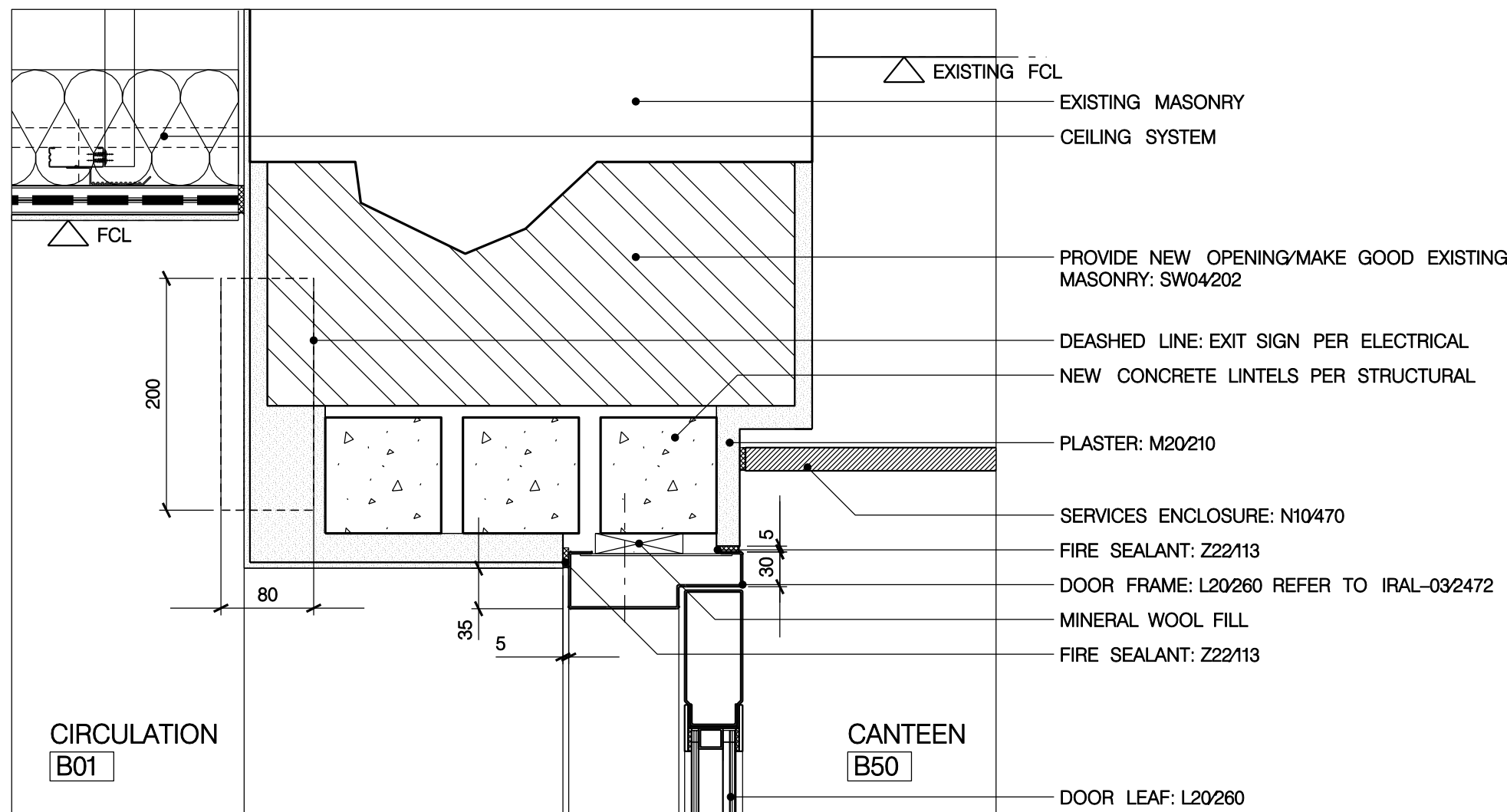
01
2451
PLAN DETAIL
JAMB DETAIL OF DOOR D-B50-1



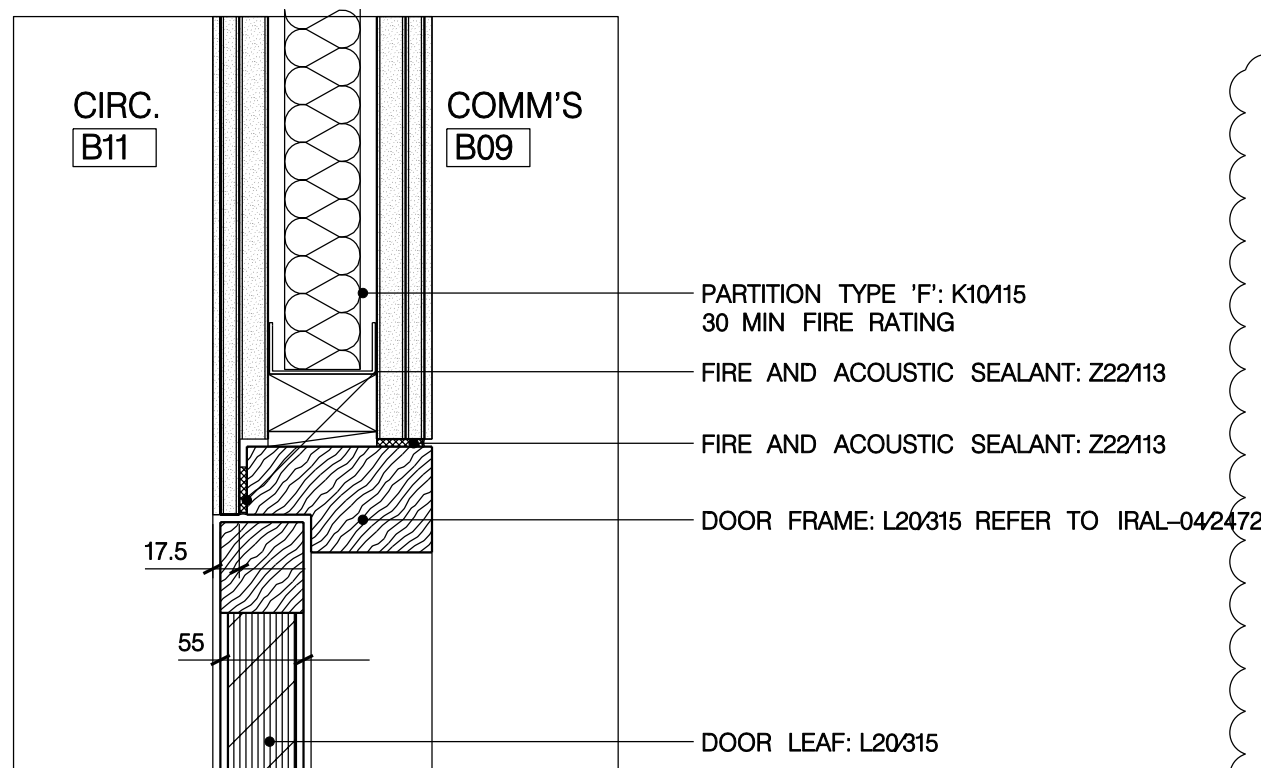
02
2451
PLAN DETAIL
JAMB DETAIL OF DOOR D-B09-1



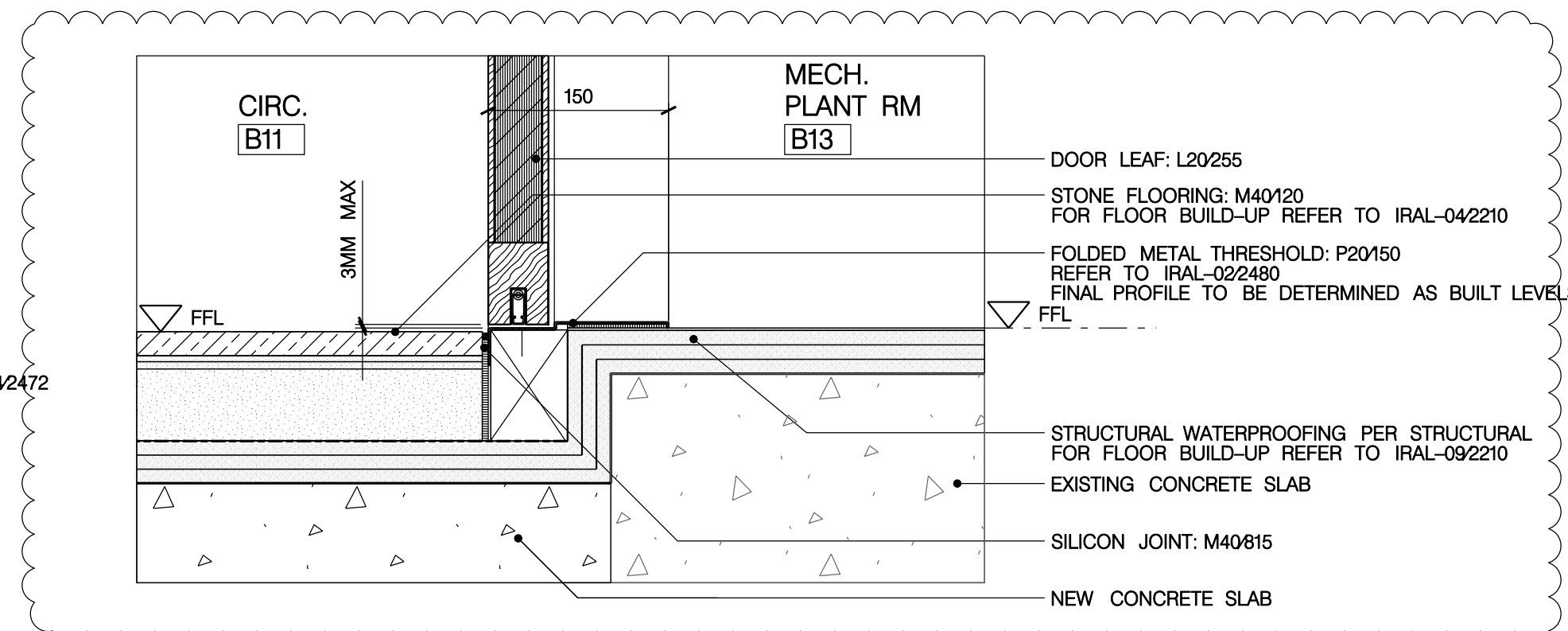
03
2451
SECTION DETAIL
JAMB DETAIL OF DOOR D-B13-1



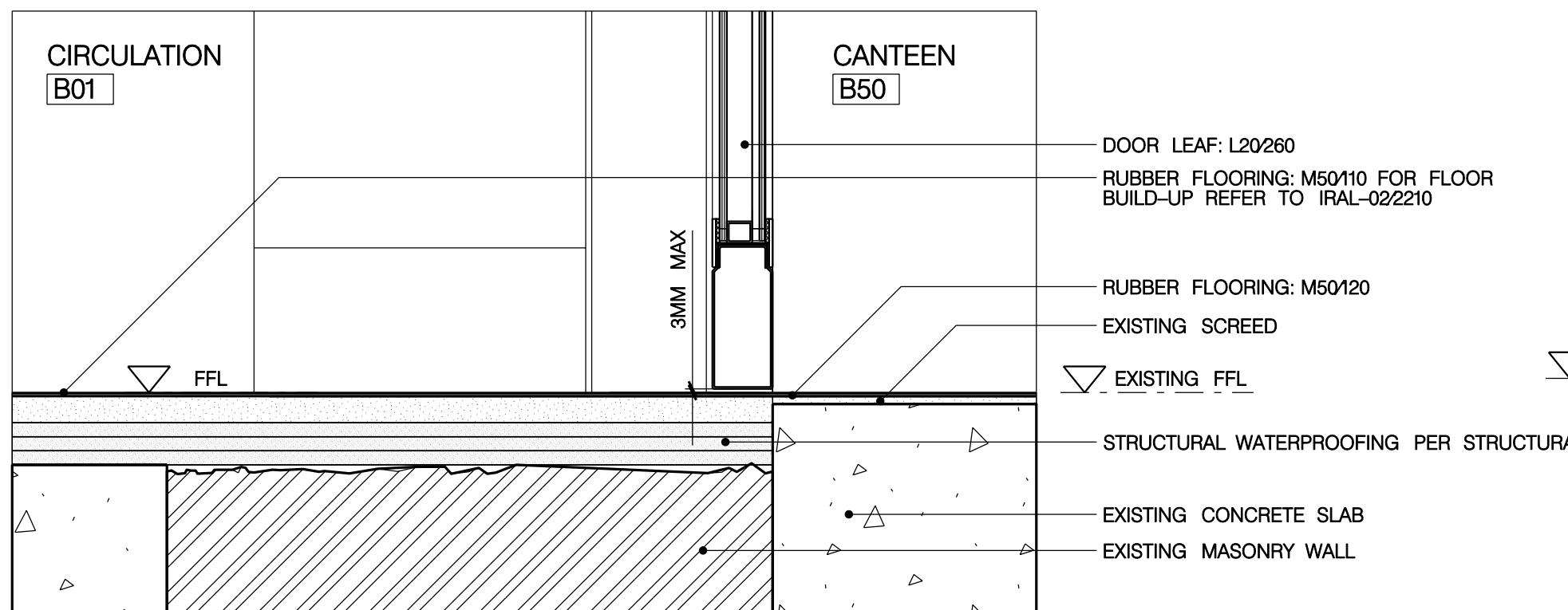
04
2451
SECTION DETAIL
HEAD DETAIL OF DOOR D-B50-1



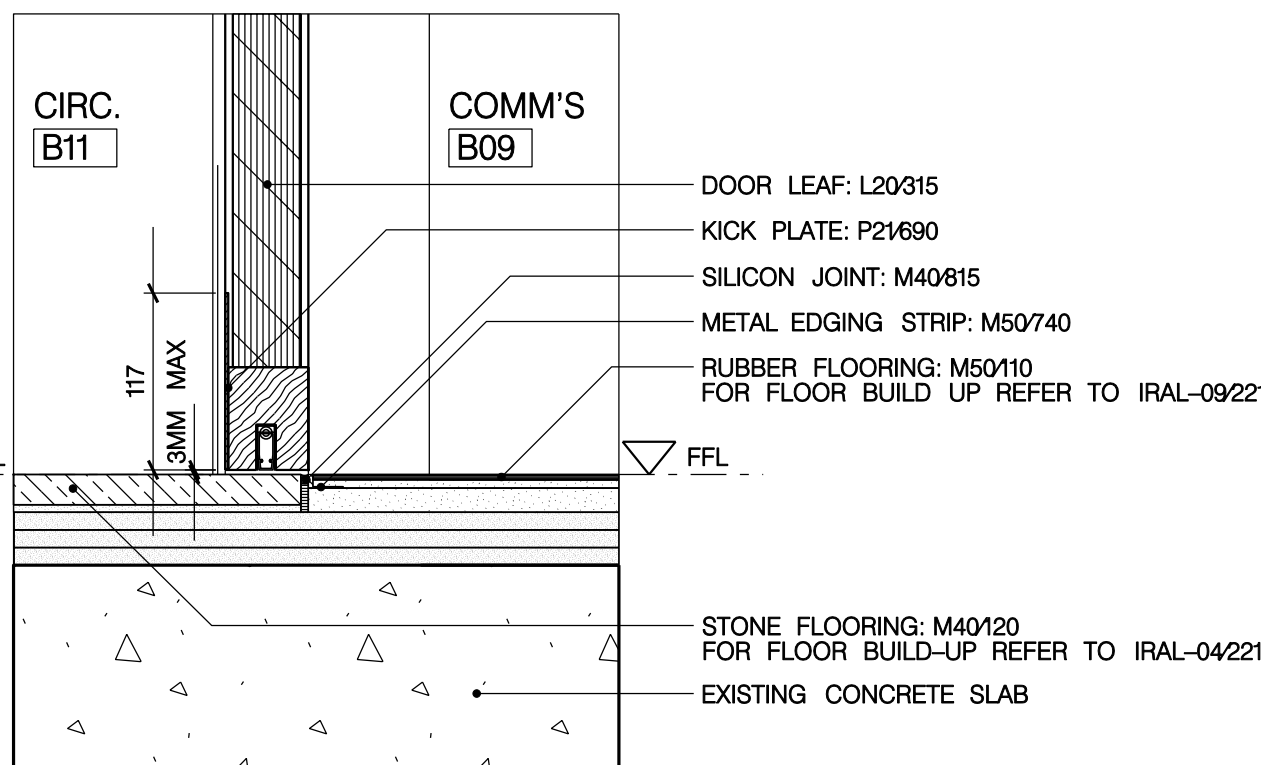
05
2451
SECTION DETAIL
HEAD DETAIL OF DOOR D-B09-1



06
2451
SECTION DETAIL
THRESHOLD DETAIL OF DOOR D-B13-1



07
2451
SECTION DETAIL
THRESHOLD DETAIL OF DOOR D-B50-1



08
2451
SECTION DETAIL
THRESHOLD DETAIL OF DOOR D-B09-1

GENERAL NOTES

- GN1. DRAWINGS TO BE READ IN CONJUNCTION WITH ALL ENGINEERS' & SPECIALISTS' DRAWINGS & ALL SPECIFICATIONS
- GN2. DO NOT SCALE FROM THIS DRAWING.
- GN3. ALL DIMENSIONS TO BE VERIFIED ON SITE. FIGURED DIMENSIONS TO TAKE PREFERENCE ON THOSE SCALED.
- GN4. ALL LEVELS TO BE TO ORDINANCE DATUM UNLESS OTHERWISE SPECIFIED.
- GN5. DRAWINGS ARE THE PROPERTY OF IAN RITCHIE ARCHITECTS LTD. AND ARE ISSUED ON THE CONDITION THEY ARE NOT REPRODUCED, RETAINED OR DISCLOSED TO ANY UNAUTHORISED PERSON, EITHER WHOLLY OR IN PART WITHOUT WRITTEN CONSENT OF IAN RITCHIE ARCHITECTS LTD.
- GN6. ALL SERVICES SHOWN ARE INDICATIVE. WORKS TO BE COORDINATED WITH BUILDERS WORK AND INSTALLATION DRAWINGS.

DETAIL NOTES

1. TO BE READ IN CONJUNCTION WITH DOOR TYPES IRAL-2410 TO IRAL-2427.
2. TO BE READ IN CONJUNCTION WITH DOOR SCHEDULE IRAL-2400 & IRAL-2401.
3. FOR IRONMONGERY SCHEDULE REFER TO IRAL-P21-1001-D.
4. FOR ADDITIONAL INFORMATION REFER TO GAS AND 1:20 DETAIL SHEETS.

LEGEND

- AMENDMENT
- IN ABEYANCE

K02	17.04.09	AC	060451 Revised to accommodate existing condition.
K01	02.03.09	AC	References added.
K00	19.01.09	AC	STAGE K ISSUE
Rev	Date	By	Description

Job Title
NORTH HOUSE

Drawing Title
Details –
Interior door types
Sheet 2

IAN RITCHIE ARCHITECTS
110 Three Colt Street London E14 8AZ
Tel: 020 7338 1100 Fax: 020 7338 1199

0 50mm 100mm 150mm 200mm

Status
CONSTRUCTION

Scale
1:5 [A1]

Date
19.01.09

Drawn
AC

Checked
TM

Approved
AS

Job No
560

Drawing No
IRAL-2451

Rev
K02