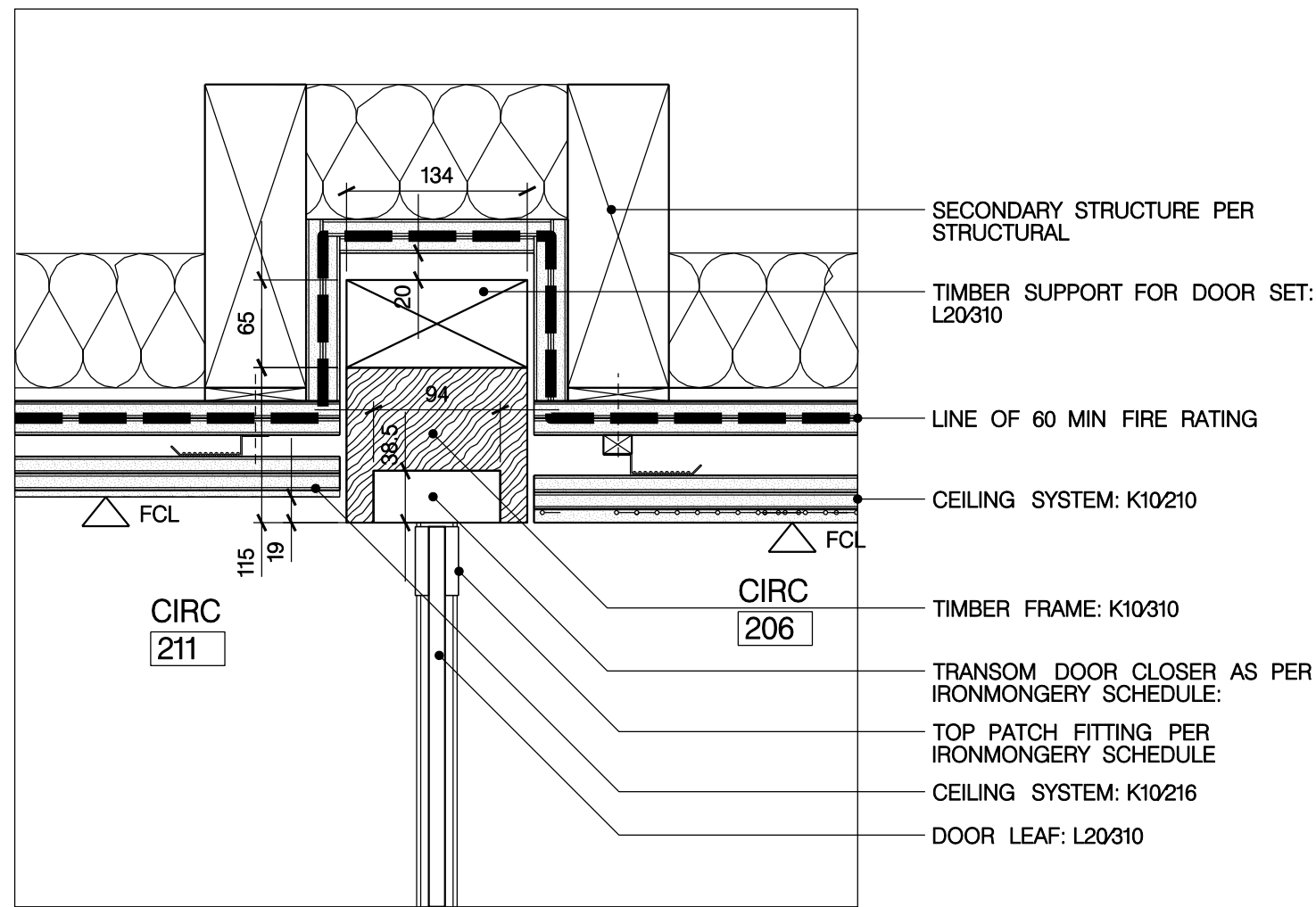


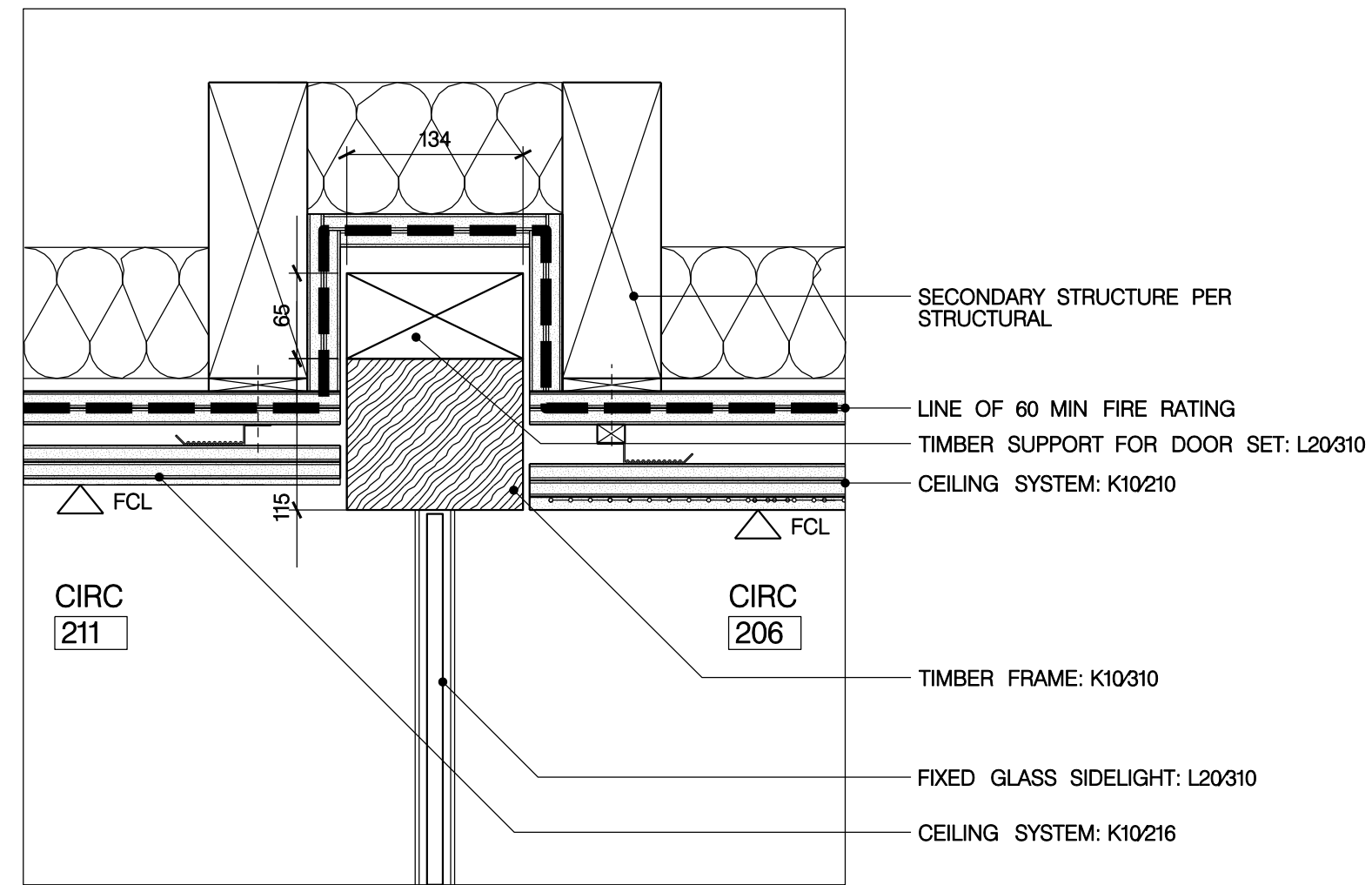
01  
2457

PLAN DETAIL  
PLAN DETAIL OF D-211-1



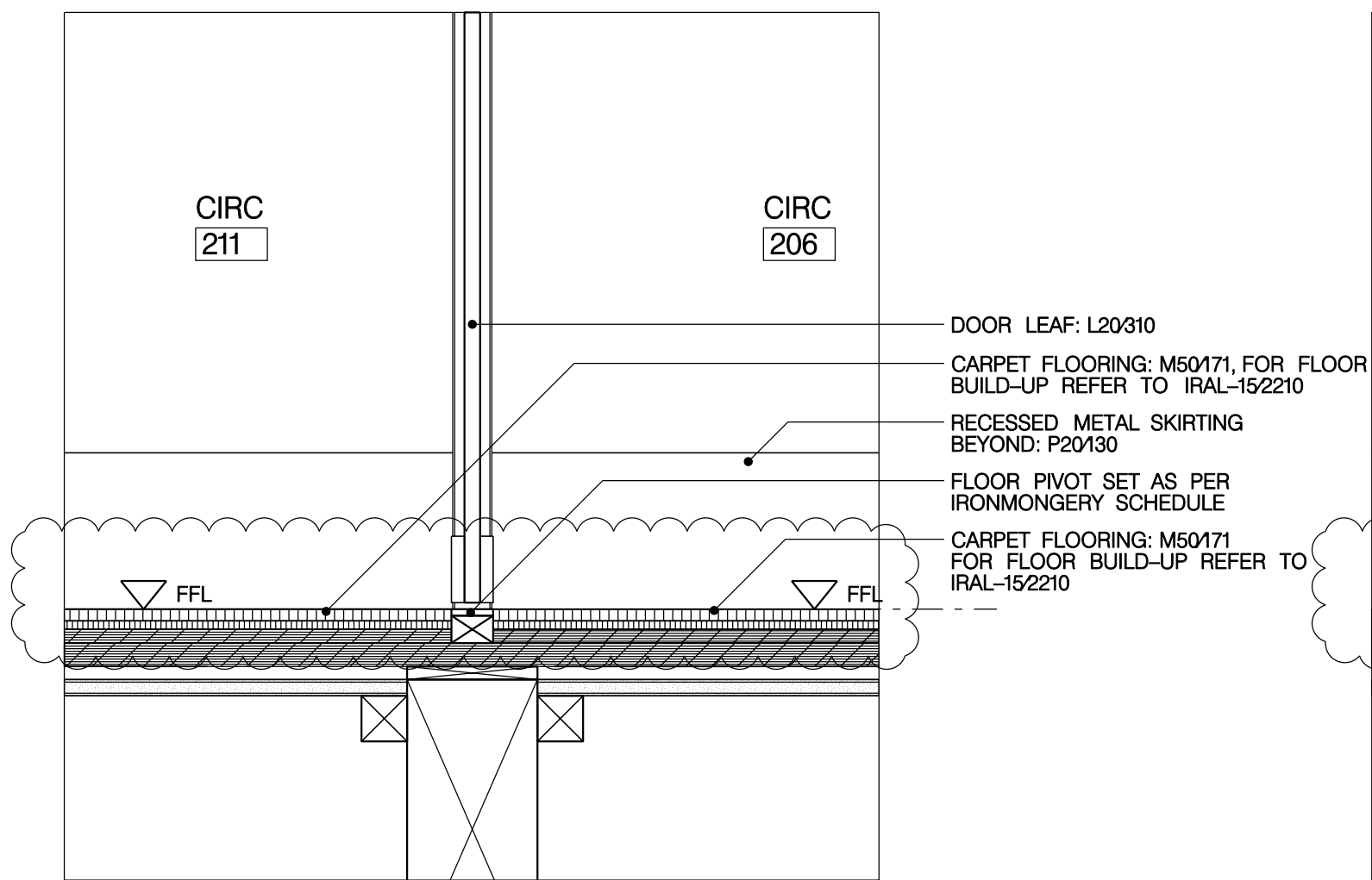
02  
2457

SECTION DETAIL  
HEAD DETAIL OF D-211-1



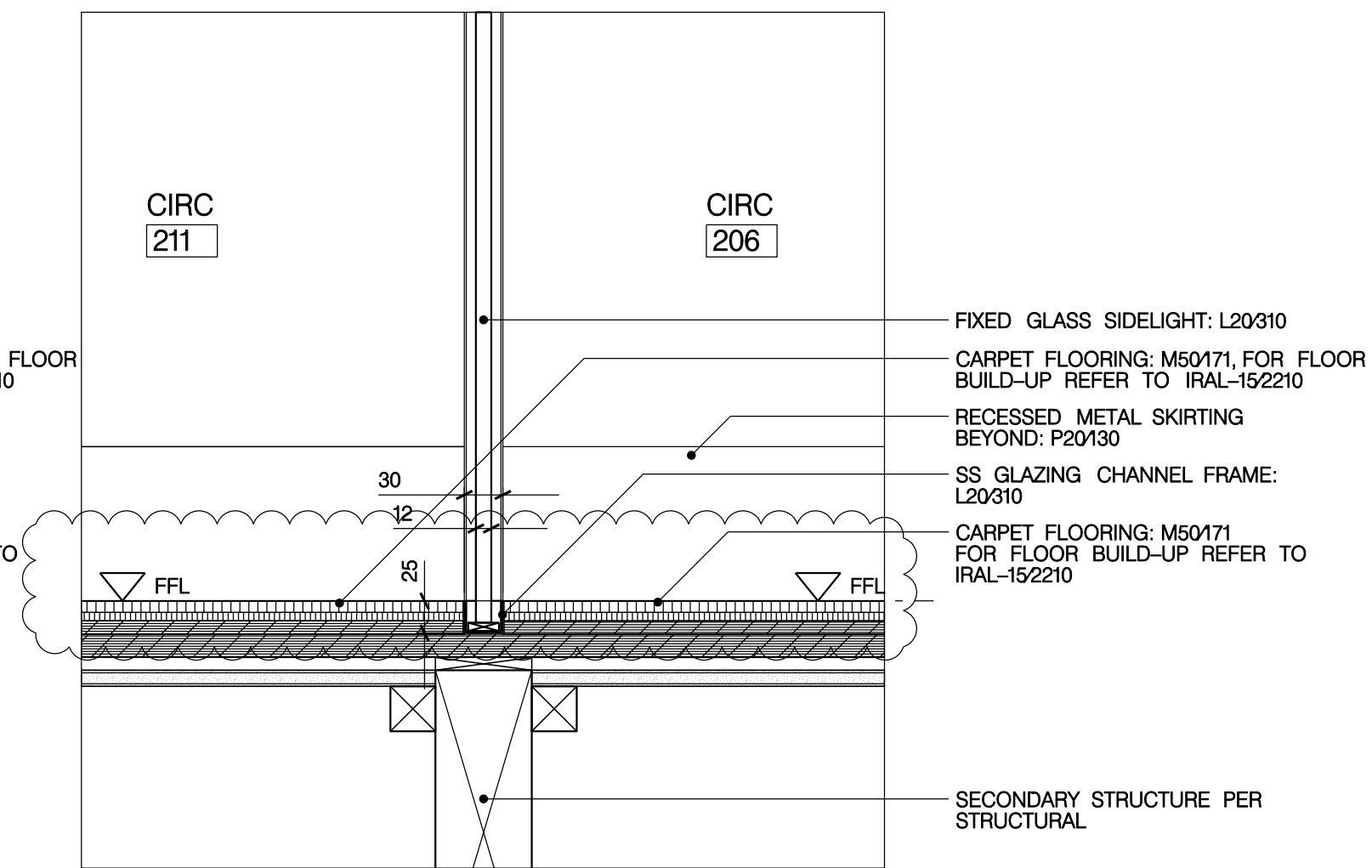
03  
2457

SECTION DETAIL  
HEAD DETAIL OF D-211-1



04  
2457

SECTION DETAIL  
FLOOR BOX DETAIL OF D-211-1



05  
2457

SECTION DETAIL  
SECTION DETAIL OF D-211-1

## GENERAL NOTES

- GN1. DRAWINGS TO BE READ IN CONJUNCTION WITH ALL ENGINEERS' & SPECIALISTS' DRAWINGS & ALL SPECIFICATIONS
- GN2. DO NOT SCALE FROM THIS DRAWING.
- GN3. ALL DIMENSIONS TO BE VERIFIED ON SITE. FIGURED DIMENSIONS TO TAKE PREFERENCE ON THOSE SCALED.
- GN4. ALL LEVELS TO BE TO ORDINANCE DATUM UNLESS OTHERWISE SPECIFIED.
- GN5. DRAWINGS ARE THE PROPERTY OF IAN RITCHIE ARCHITECTS LTD. AND ARE ISSUED ON THE CONDITION THEY ARE NOT REPRODUCED, RETAINED OR DISCLOSED TO ANY UNAUTHORISED PERSON, EITHER WHOLLY OR IN PART WITHOUT WRITTEN CONSENT OF IAN RITCHIE ARCHITECTS LTD.
- GN6. ALL SERVICES SHOWN ARE INDICATIVE. WORKS TO BE COORDINATED WITH BUILDERS WORK AND INSTALLATION DRAWINGS.

## DETAIL NOTES

1. TO BE READ IN CONJUNCTION WITH DOOR TYPES IRAL-2410 TO IRAL-2427
2. TO BE READ IN CONJUNCTION WITH DOOR SCHEDULE IRAL-2400 & IRAL-2401
3. FOR IRONMONGERY SCHEDULE REFER TO IRAL-P21-1001-D
4. FOR ADDITIONAL INFORMATION REFER TO GAS AND 1:20 DETAIL SHEETS.

## LEGEND

- AMENDMENT
- IN ABEYANCE

K02	17.04.09	AC	Carpet floor build-up revised as per previously issued specification.
K01	02.03.09	AC	Floor finish changed to carpet, ironmongery revised.
K00	19.01.09	AC	STAGE K: ISSUE
Rev	Date	By	Description

Job Title  
**NORTH HOUSE**

Drawing Title  
**Details –  
Interior door types  
Sheet 8**

**IAN RITCHIE ARCHITECTS**®  
110 Three Colt Street London E14 8AZ  
Tel: 020 7338 1100 Fax: 020 7338 1199

0 50mm 100mm 150mm 200mm

Status  
**CONSTRUCTION**

Scale  
**1:5 [A1]**

Date  
**19.01.09**

Drawn AC	Checked TM	Approved AS
-------------	---------------	----------------

Job No <b>560</b>	Drawing No <b>IRAL-2457</b>	Rev <b>K02</b>
----------------------	--------------------------------	-------------------