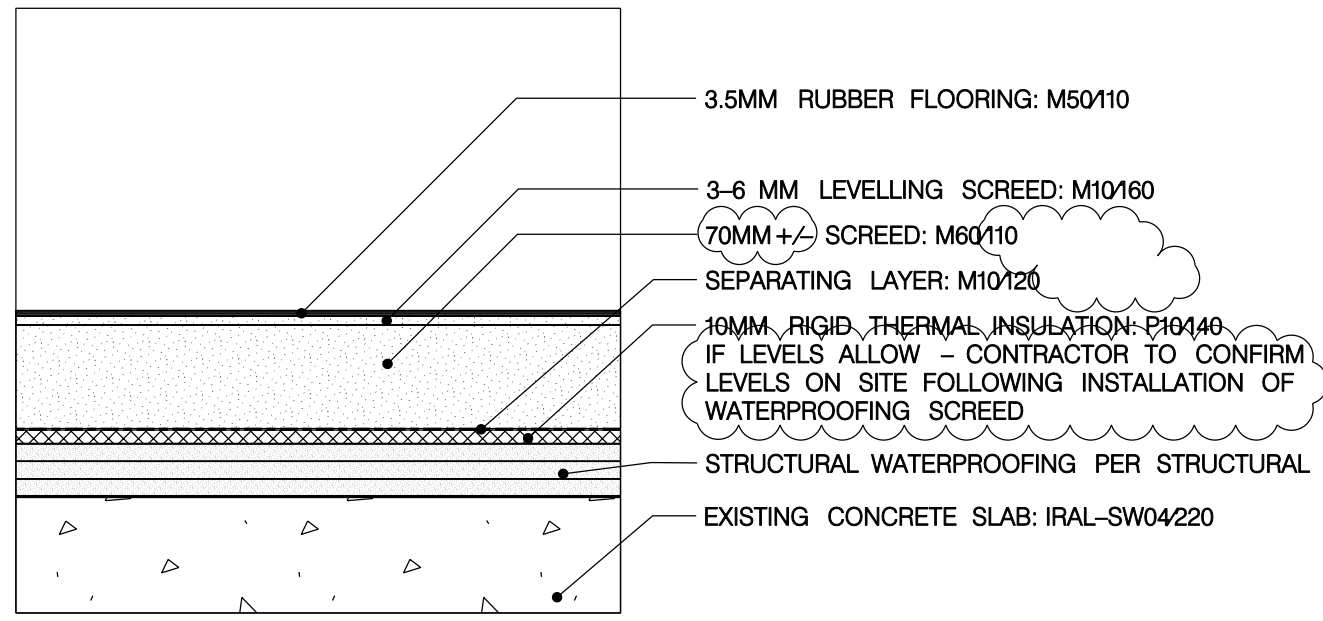


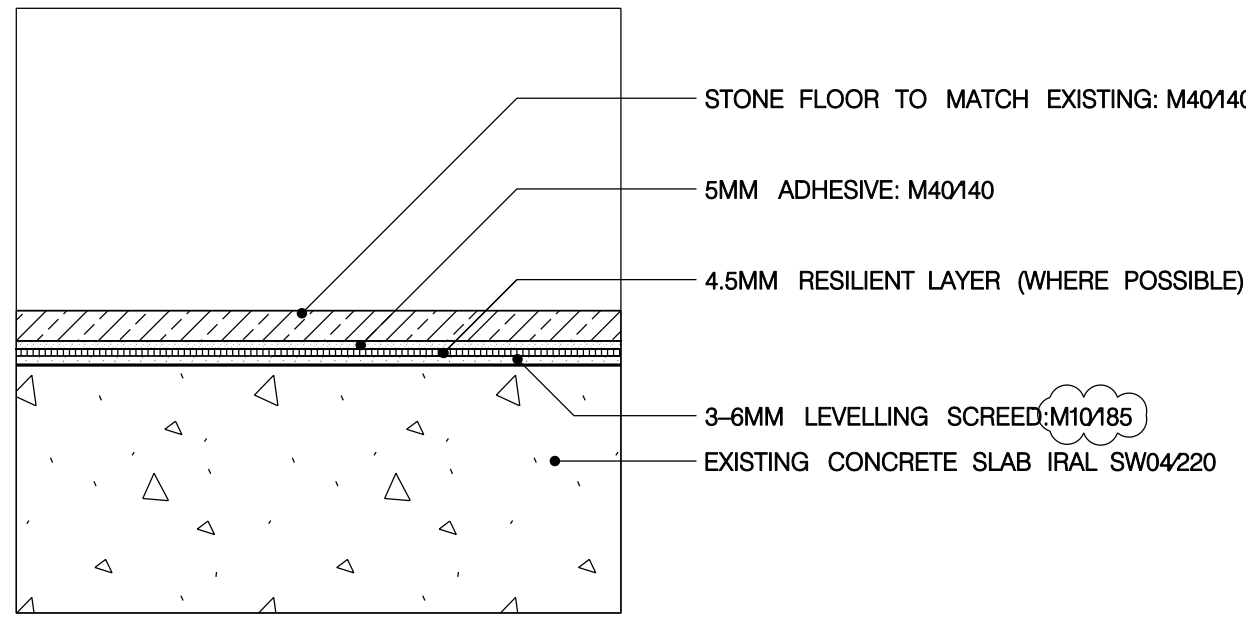
01  
2210

SECTION DETAIL  
RUBBER FLOOR AT B15 & B16



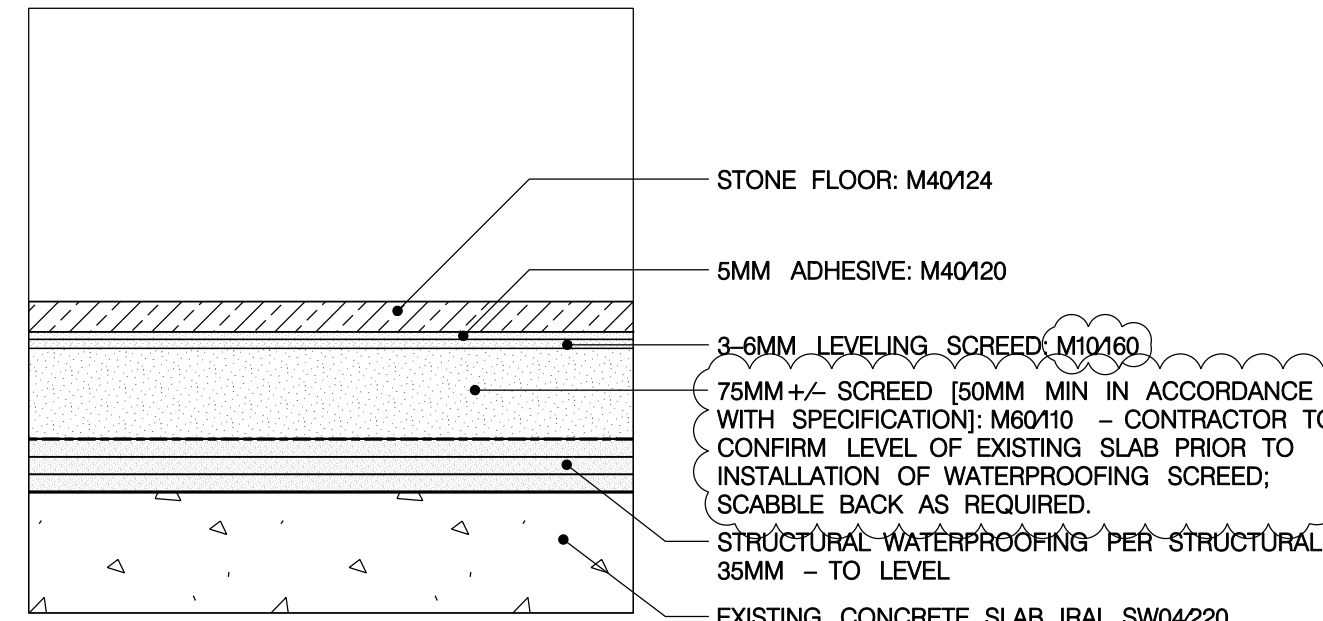
02  
2210

SECTION DETAIL  
RUBBER FLOOR AT B01, B02, B04, B06, B08, B09 & B07



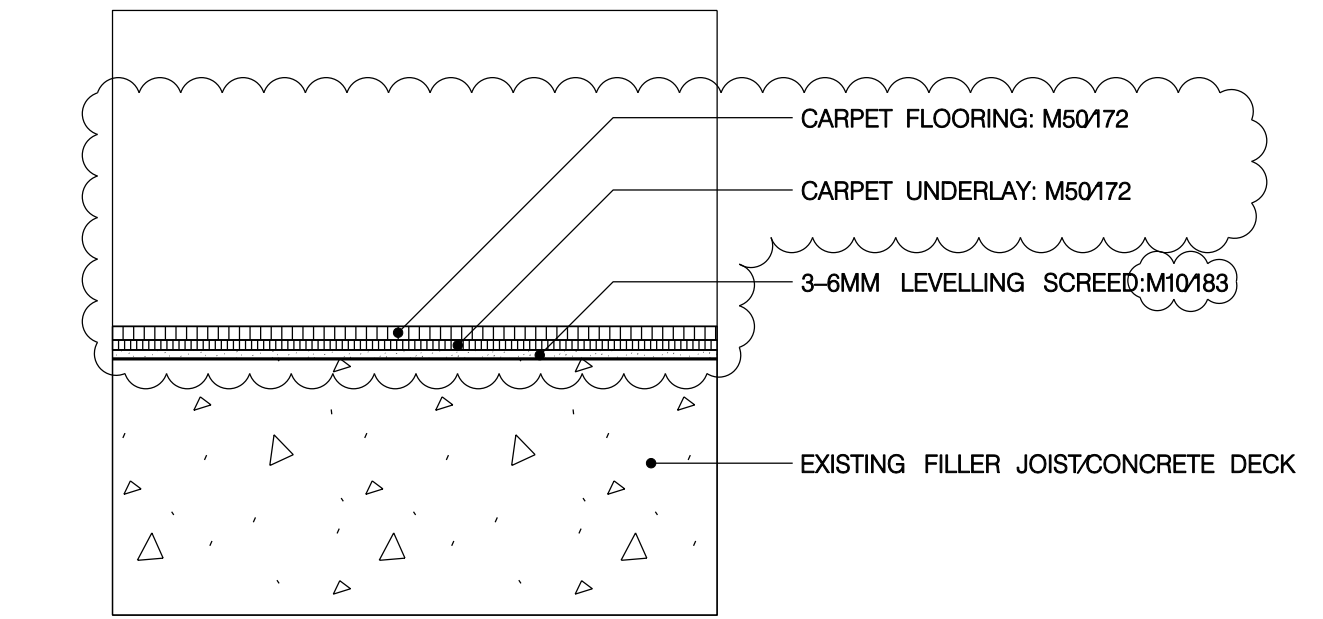
03  
2210

SECTION DETAIL  
STONE FLOOR AT 107



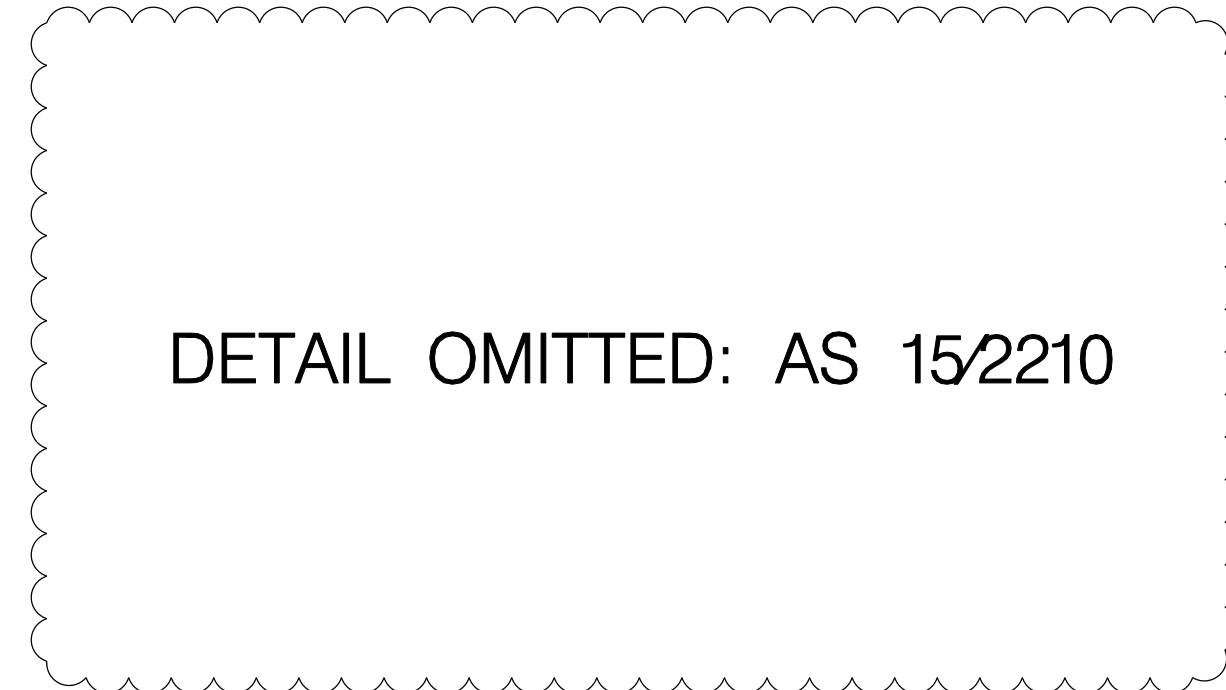
04  
2210

SECTION DETAIL  
STONE FLOOR AT B11



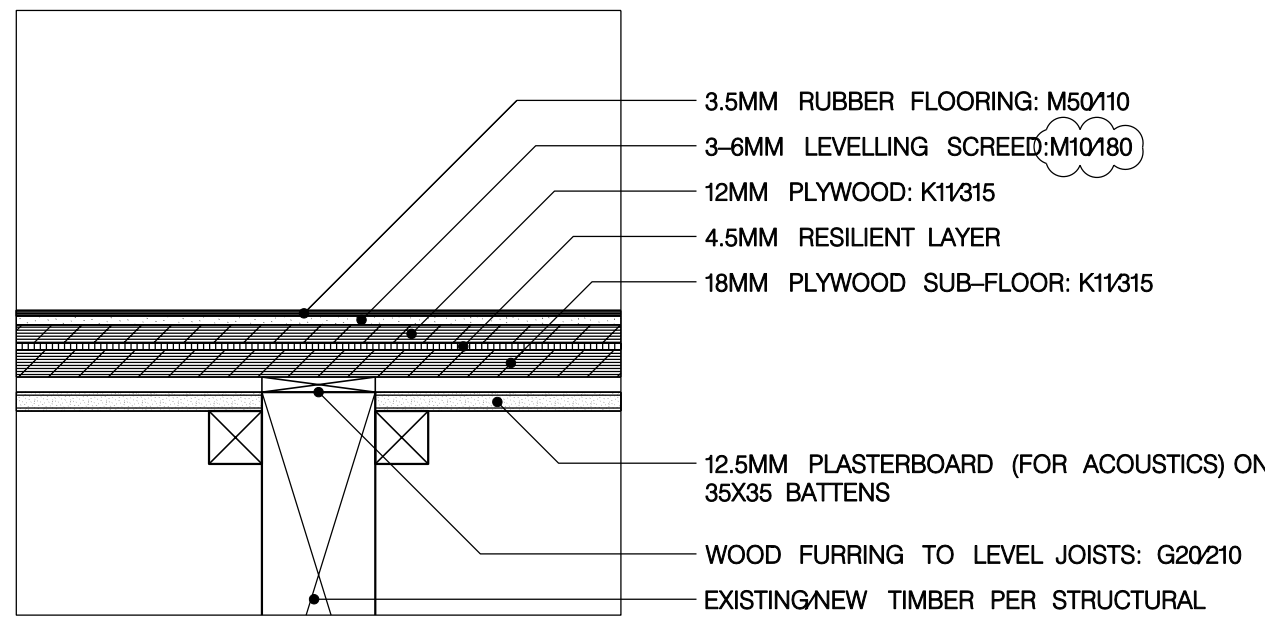
05  
2210

SECTION DETAIL  
CARPET FLOOR AT G08, G10a, G10b & G10c



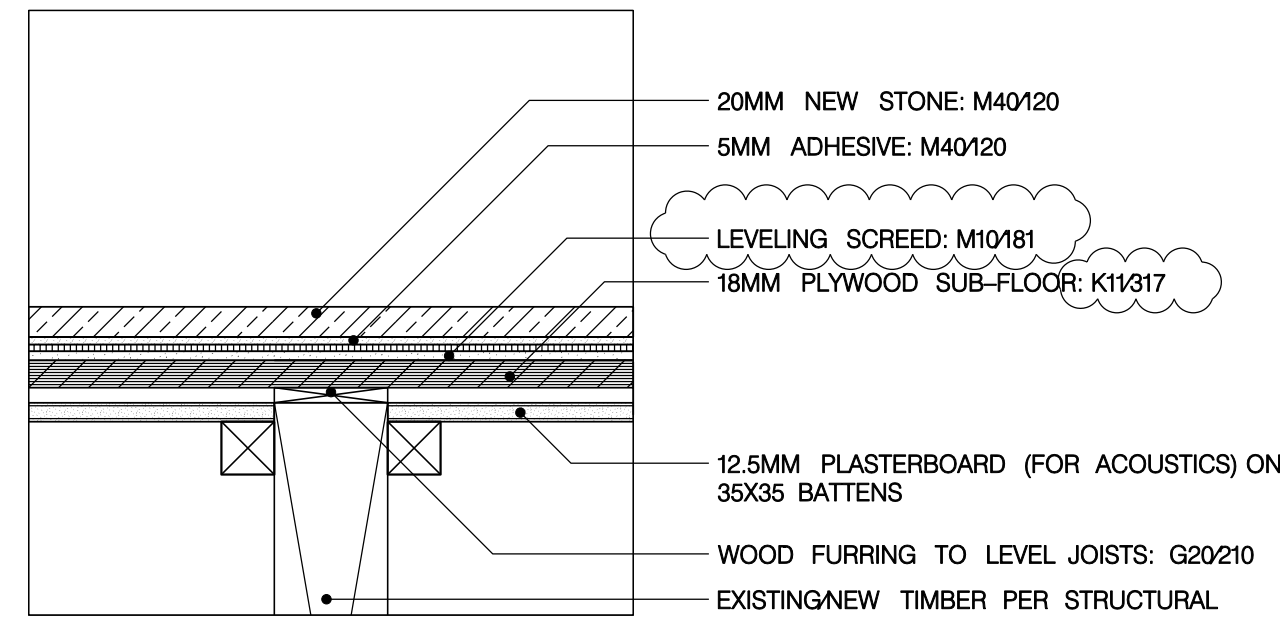
06  
2210

NOT USED



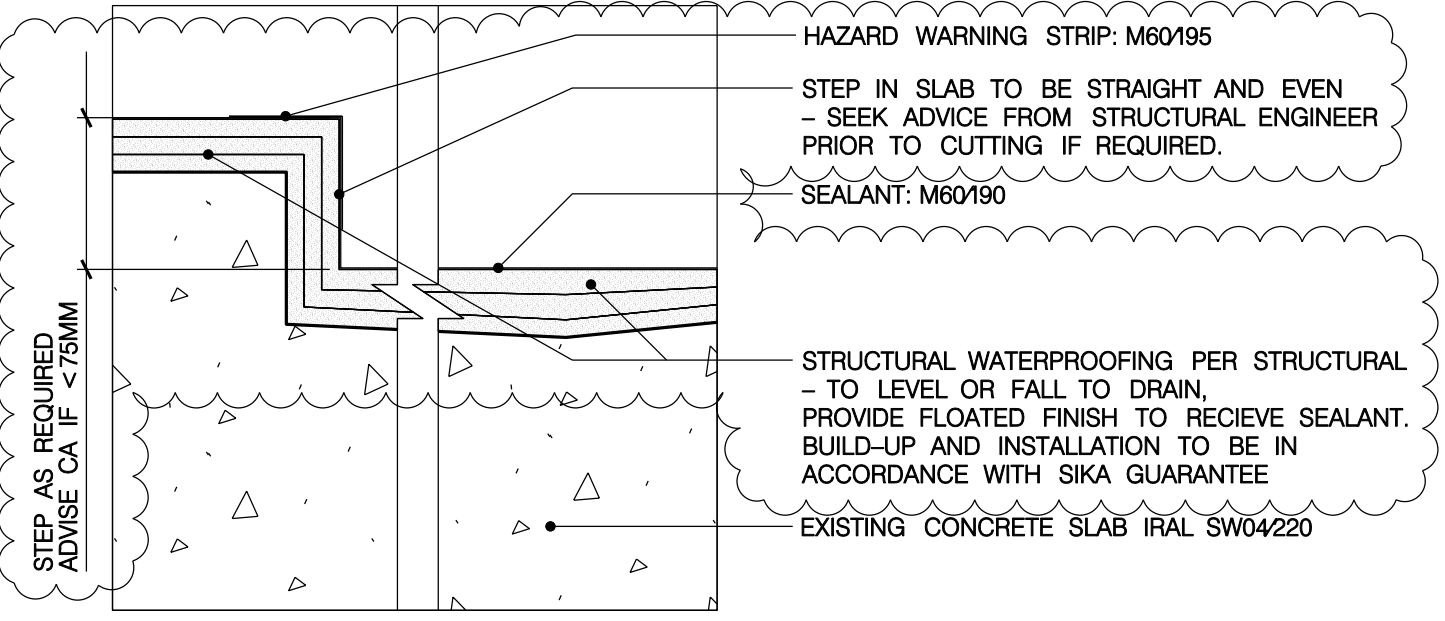
07  
2210

SECTION DETAIL  
RUBBER FLOOR AT G15, 102, 103, 104, 109, 204, 205 & 304



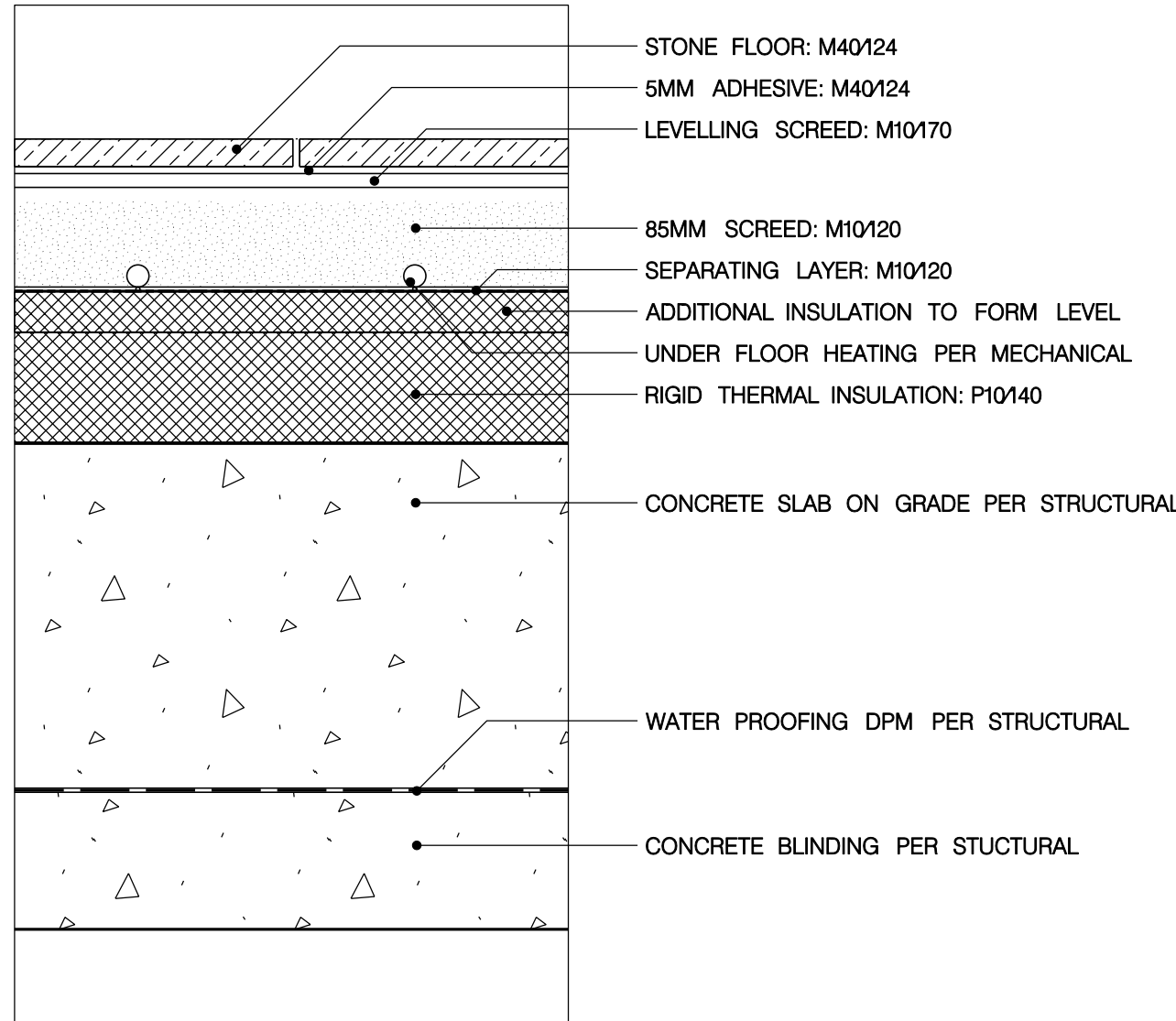
08  
2210

SECTION DETAIL  
STONE FLOOR AT G05



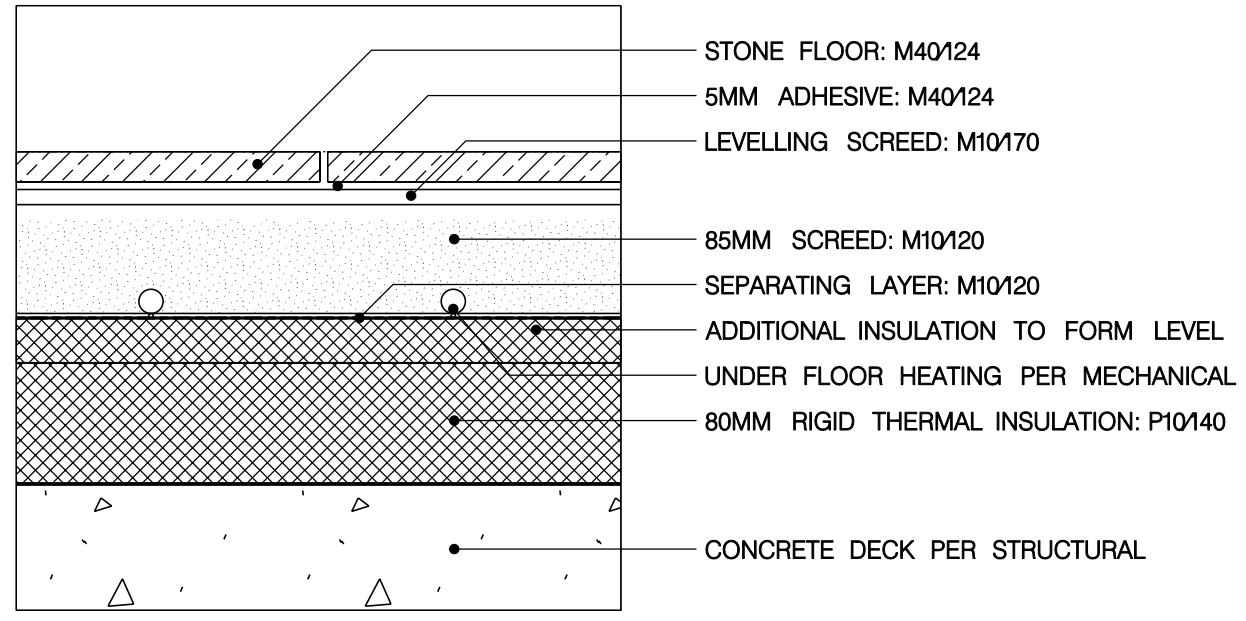
09  
2210

SECTION DETAIL  
SEALED CONCRETE SCREED AT B13 (PLANT ROOM)



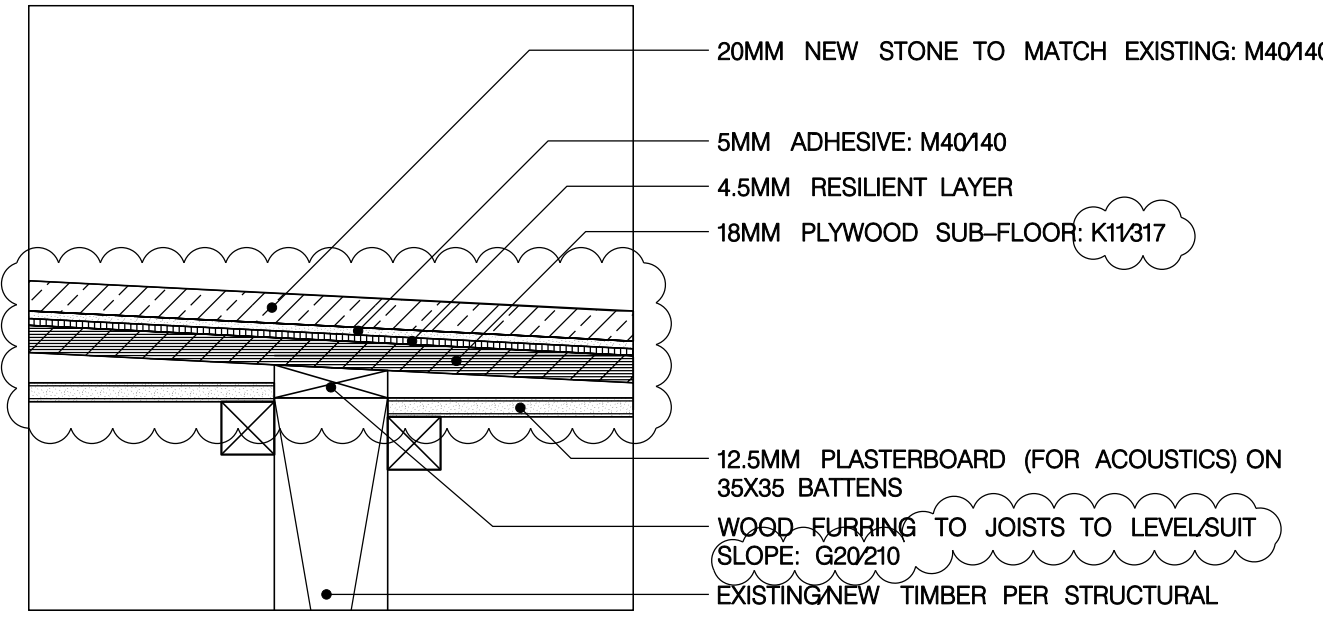
10  
2210

SECTION DETAIL  
STONE FLOOR AT B12 (ENCLOSED COURTYARD)



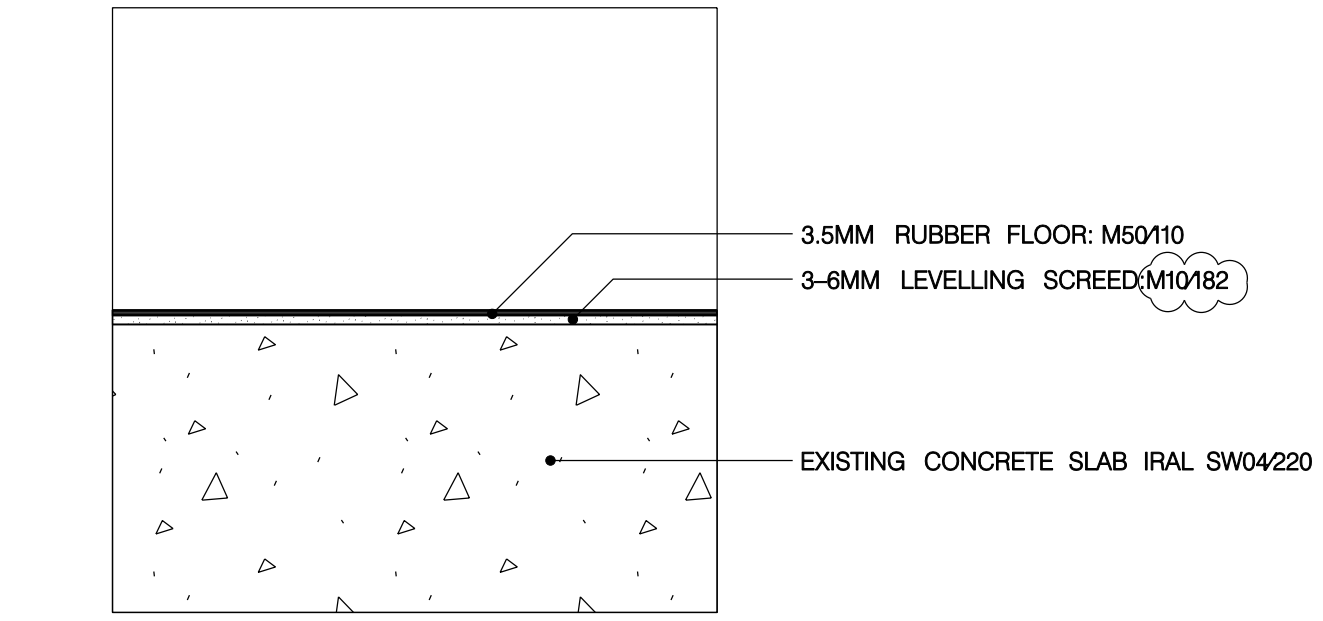
11  
2210

SECTION DETAIL  
STONE FLOOR AT G06 (ENTRY HALL)



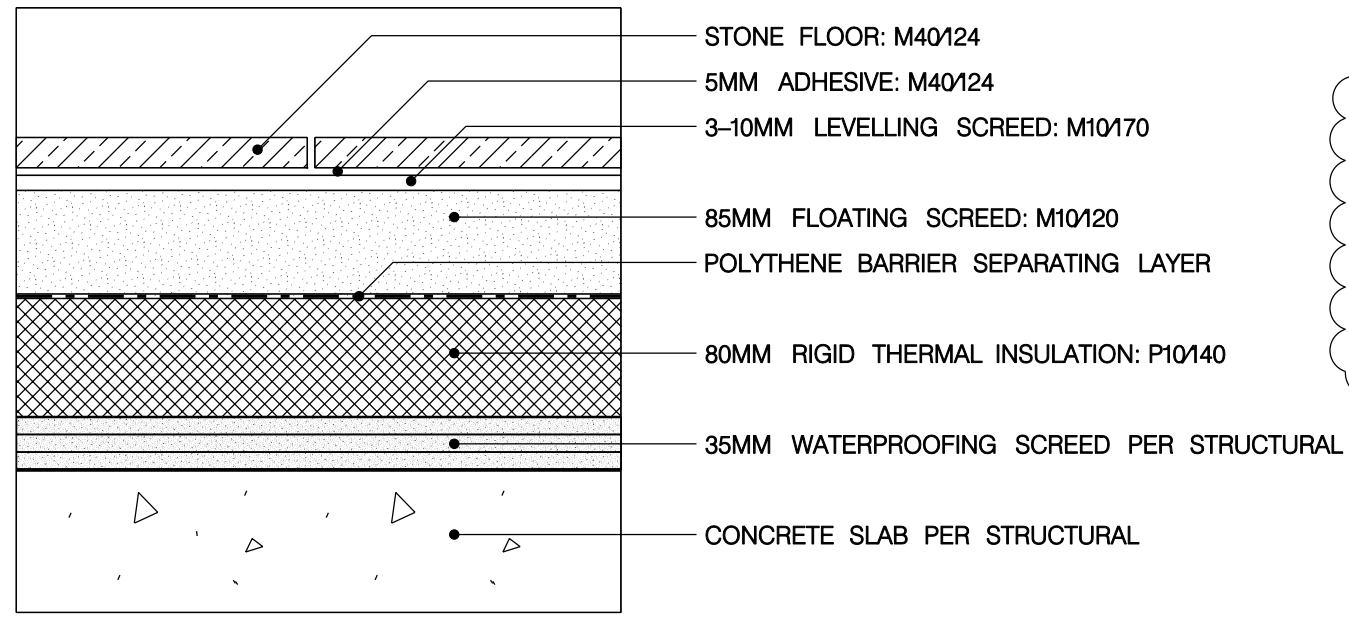
12  
2210

SECTION DETAIL  
STONE FLOOR AT 106 (RAMP)



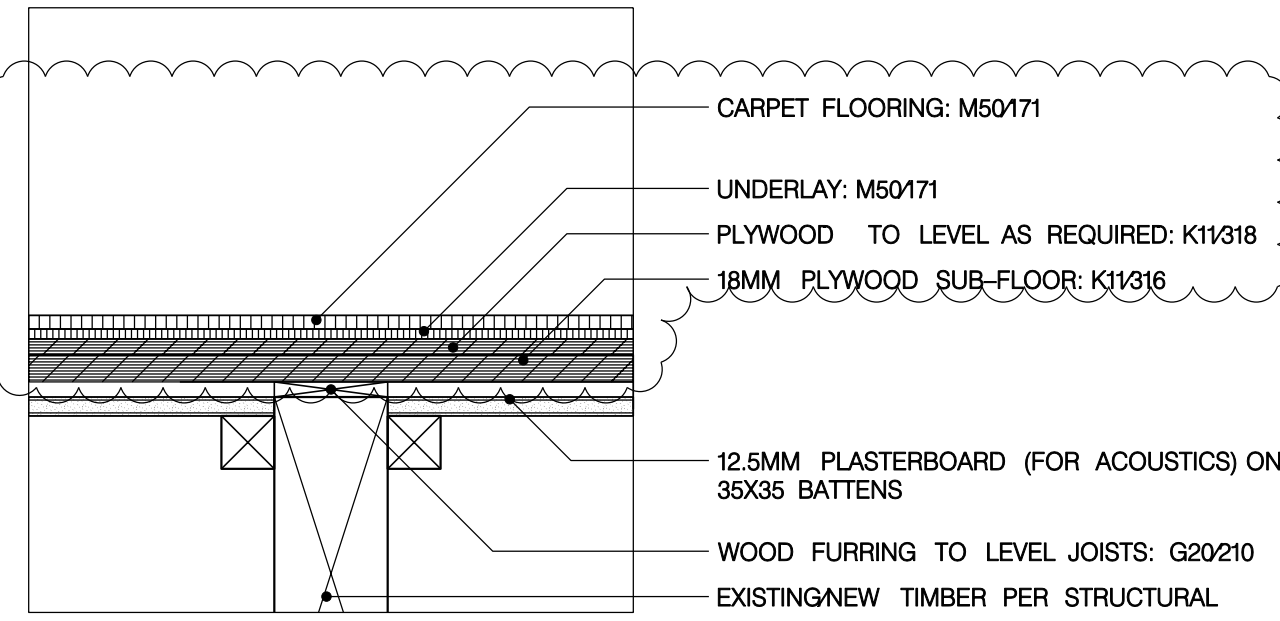
13  
2210

SECTION DETAIL  
RUBBER FLOOR AT G14, 109



14  
2210

SECTION DETAIL  
STONE FLOOR AT B11 AT LOWER LANDING



15  
2210

SECTION DETAIL  
CARPET FLOOR AT G09, 1ST, 2ND & 3RD FLOORS

## GENERAL NOTES

- GN1. DRAWINGS TO BE READ IN CONJUNCTION WITH ALL ENGINEERS' & SPECIALISTS' DRAWINGS & ALL SPECIFICATIONS
- GN2. DO NOT SCALE FROM THIS DRAWING.
- GN3. ALL DIMENSIONS TO BE VERIFIED ON SITE. FIGURED DIMENSIONS TO TAKE PREFERENCE ON THOSE SCALED.
- GN4. ALL LEVELS TO BE TO ORDINANCE DATUM UNLESS OTHERWISE SPECIFIED.
- GN5. DRAWINGS ARE THE PROPERTY OF IAN RITCHIE ARCHITECTS LTD. AND ARE ISSUED ON THE CONDITION THEY ARE NOT REPRODUCED, RETAINED OR DISCLOSED TO ANY UNAUTHORISED PERSON, EITHER WHOLLY OR IN PART WITHOUT WRITTEN CONSENT OF IAN RITCHIE ARCHITECTS LTD.
- GN6. ALL SERVICES SHOWN ARE INDICATIVE. WORKS TO BE COORDINATED WITH BUILDERS WORK AND INSTALLATION DRAWINGS.

## FLOOR DETAIL NOTES

1. FOR FLOOR LOCATIONS REFER TO IRAL-5210 & IRAL-5211 AND DETAIL ARRANGEMENT FLOOR PLANS.
2. FLOOR SUPPORT SYSTEMS /TIMBER BATTENS TO BE COORDINATED WITH STRUCTURE AND SERVICES INSTALLATIONS.
3. REFER TO IRAL-5000 & 5001, AND 5010 & 5011 FOR FIRE SEPARATION AND STEEL PROTECTION REQUIREMENTS.
4. REFER TO IRAL-2200, 2201 & 2202 FOR COORDINATION AND SERVICES INTEGRATION.

## LEGEND

- AMENDMENT
- IN ABEYANCE

K02	17.04.09	AC	Detail 01, 15 revised per previously issued specification 06/2010. Deleted Title 01/0 & 15/2010 revised. Detail 02/02/04 & 09 revised per existing site levels. Levelling screed spec. n/a's revised. Sloped floor indicated. Screened above ground floor.
K01	02.03.09	TM	Floor build-ups in east and west basement revised (site conditions) in abeyance.
K00	19.01.09	AC	Detail 15/2210 added. Locations in titles amended.
F01	30.09.08	AC	Stone/Screed build-ups updated/revised for Tender. Locations noted in files.
F00	31.07.08	AC	Tender issue.
E00	31.03.08	BF	First issue.
Rev	Date	By	Description

Job Title  
NORTH HOUSE

Drawing Title  
Details –  
Floors  
Sheet 1

IAN RITCHIE ARCHITECTS  
110 Three Colt Street London E14 8AZ  
Tel: 020 7338 1100 Fax: 020 7338 1199

0 50mm 100mm 150mm 200mm

Status  
CONSTRUCTION

Scale  
1:5 [A1]

Date  
31.03.08

Drawn  
BF

Checked  
TM

Approved  
AS

Job No  
560

Drawing No  
IRAL-2210

Rev  
K02