



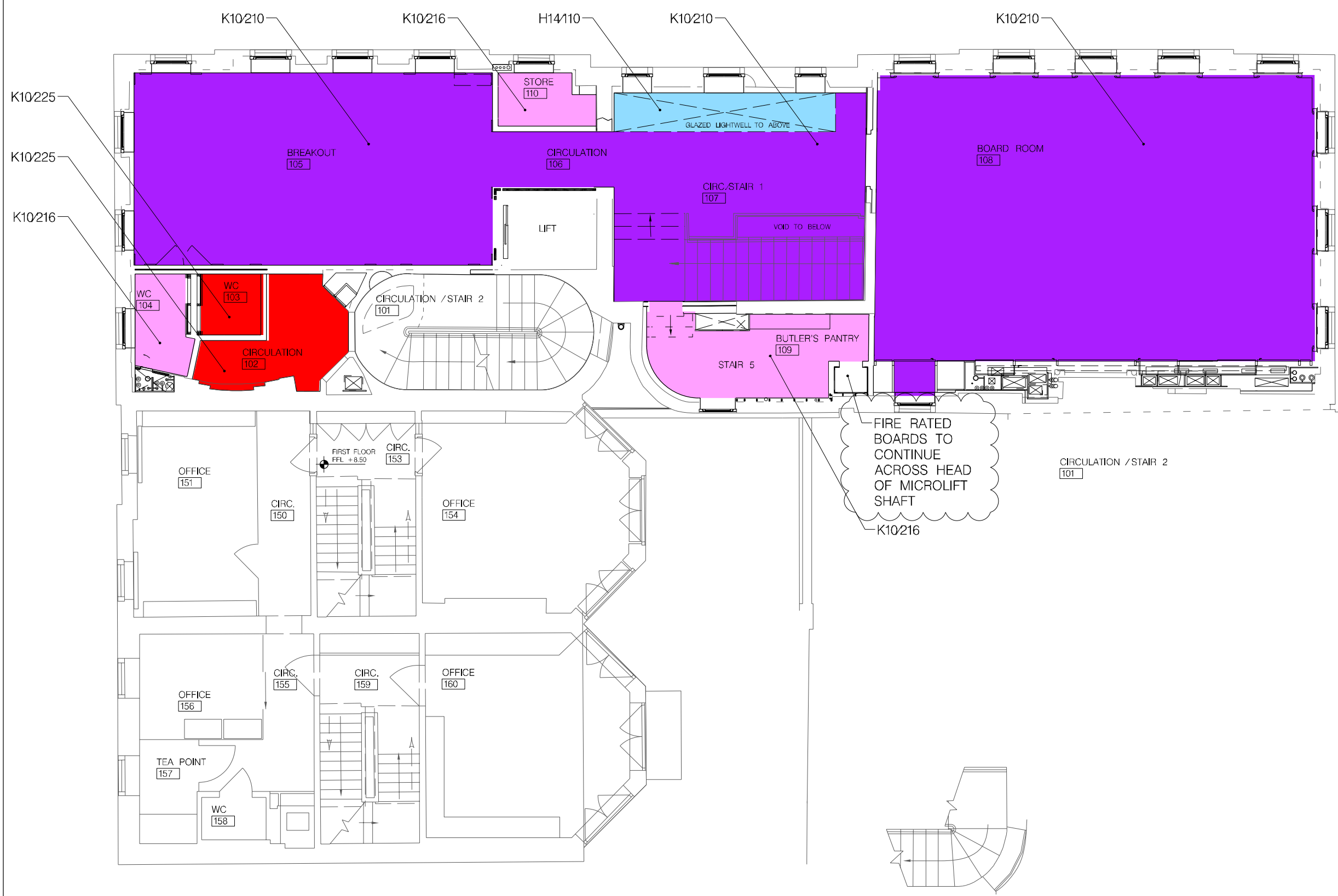
01
5215

CEILING DETAILS
BASEMENT LEVEL



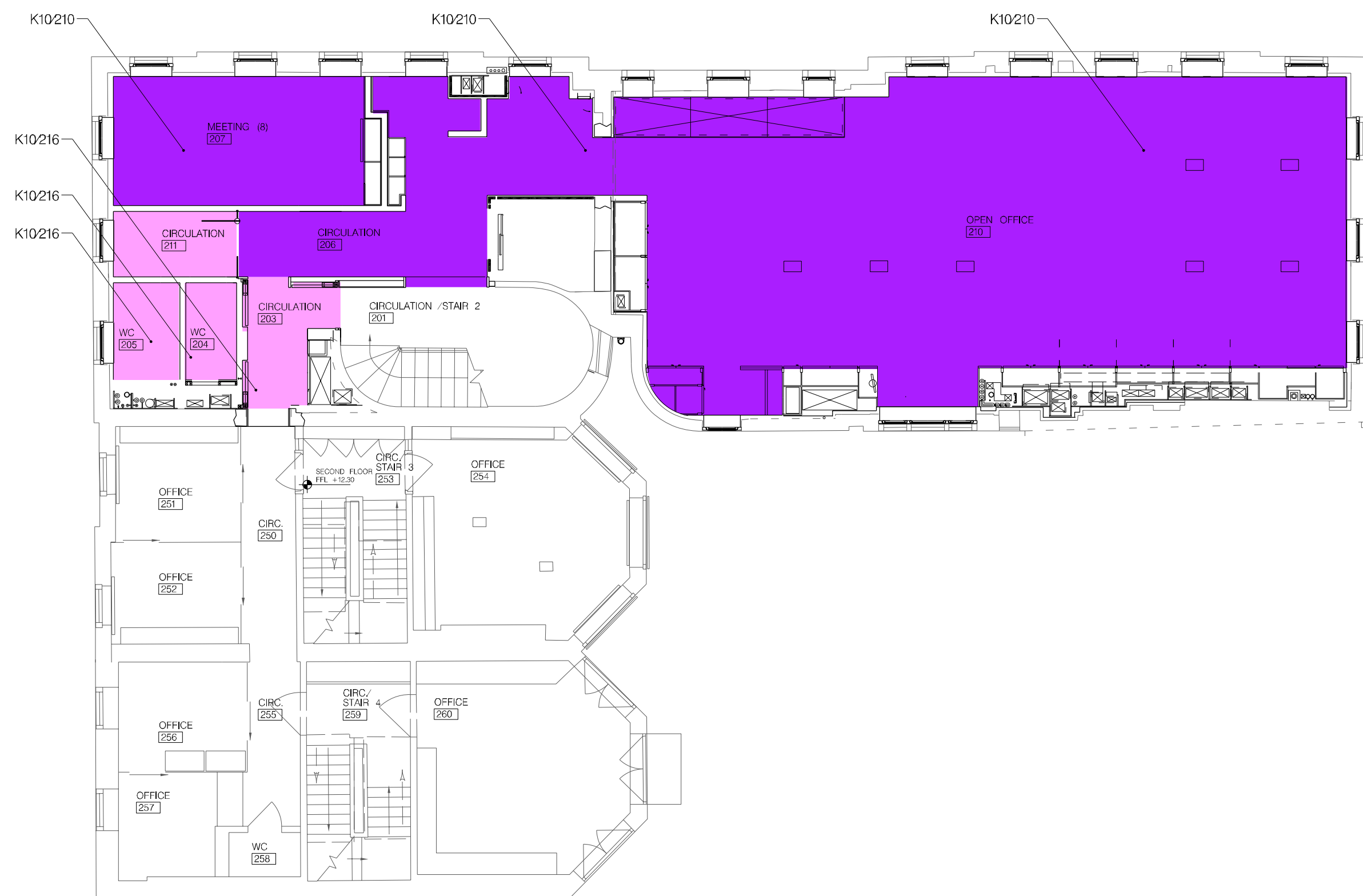
02
5215

CEILING DETAILS
GROUND FLOOR LEVEL



03
5215

CEILING DETAILS
FIRST FLOOR LEVEL



04
5215

CEILING DETAILS
SECOND FLOOR LEVEL

GENERAL NOTES

- GN1. DRAWINGS TO BE READ IN CONJUNCTION WITH ALL ENGINEERS' & SPECIALISTS' DRAWINGS & ALL SPECIFICATIONS.
- GN2. DO NOT SCALE FROM THIS DRAWING.
- GN3. ALL DIMENSIONS TO BE VERIFIED ON SITE. FIGURED DIMENSIONS TO TAKE PREFERENCE ON THOSE SCALED.
- GN4. ALL LEVELS TO BE TO ORDINANCE DATUM UNLESS OTHERWISE SPECIFIED.
- GN5. DRAWINGS ARE THE PROPERTY OF IAN RITCHIE ARCHITECTS LTD. AND ARE ISSUED ON THE CONDITION THEY ARE NOT REPRODUCED, RETAINED OR DISCLOSED TO ANY UNAUTHORISED PERSON, EITHER WHOLLY OR IN PART WITHOUT WRITTEN CONSENT OF IAN RITCHIE ARCHITECTS LTD.

CEILING DETAILS NOTES

1. REFER TO CEILING DETAILS IRAL-2215.
2. REFER TO IRAL-2200 & 2201 FOR FLOOR VOID COORDINATION DETAILS.

LEGEND

- K10215 CEILING SYSTEM AT CONCRETE SLAB (DETAIL 01IRAL-2215)
- K10216 CEILING SYSTEM TIMBER BATTENS (DETAIL 02IRAL-2215)
- K10210 CHILLED CEILING SYSTEM TIMBER BATTENS (DETAIL 03IRAL-2215)
- K10225 SUSPENDED CEILING SYSTEM (DETAIL 04IRAL-2215)
- K10226 CHILLED SUSPENDED CEILING SYSTEM (DETAIL 05IRAL-2215)
- K10211 CHILLED CEILING SYSTEM AT PITCHED ROOF (DETAIL 06IRAL-2215)
- K10217 CEILING SYSTEM AT PITCHED ROOF (DETAIL 07IRAL-2215)
- K10212 VAULTED CEILING (DETAIL 08IRAL-2215)
- K10218 CEILING SYSTEM AT SECONDARY STRUCTURE (DETAIL 09IRAL-2215)
- K10227 SUSPENDED CEILING SYSTEM (DETAIL 10IRAL-2215)
- H14110 GLASS FLOOR ABOVE
- H13410 GLASS ROOF

AMENDMENT IN ABBREVIATION

K01	02.03.08	TM	Note added at Microlift 1st floor, ceiling designation removed at Microlift ground floor
K00	19.01.09	AC	H14110 Colour amended. Glass ceiling above second floor omitted. General access to basement ceilings.
F01	31.07.08	BF	FIRST ISSUE

Rev. Date By Description

Job Title
NORTH HOUSE

Drawing Title
Ceiling Details Location
Plans
Sheet 1

IAN RITCHIE ARCHITECTS
110 Three Colt Street London E14 8AZ
Tel: 020 7338 1100 Fax: 020 7338 1199

0 1m 2m 3m 4m 5m

Status
PRELIMINARY

Scale
1:100 [A1]

Date
31.07.08

Drawn
BF

Checked
TM

Approved
AS

Job No
560

Drawing No
IRAL-5215

Rev
K01