

All levels are in metres above Ordnance Datum.

All dimensions should be checked on site. Do not scale from this drawing. Stanton Williams to be advised of any variation between the drawings and site conditions.

To be read in conjunction with: architectural drawings and specification, structural and services engineers information, and fire / acoustic/ security strategies.

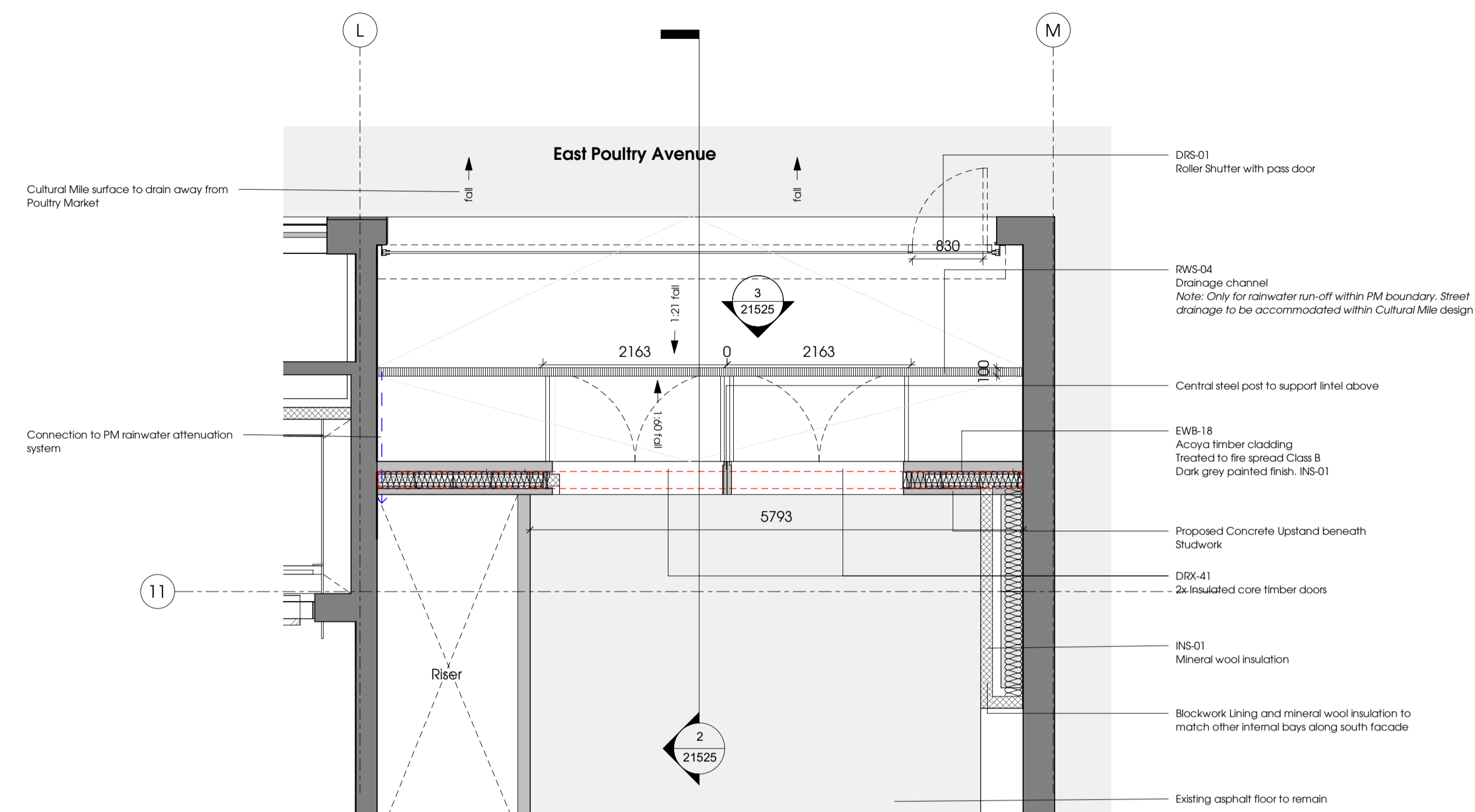
Safety, health and environmental information

Please refer to pre-construction information and risk register. The notes below refer specifically to the information shown on this drawing.

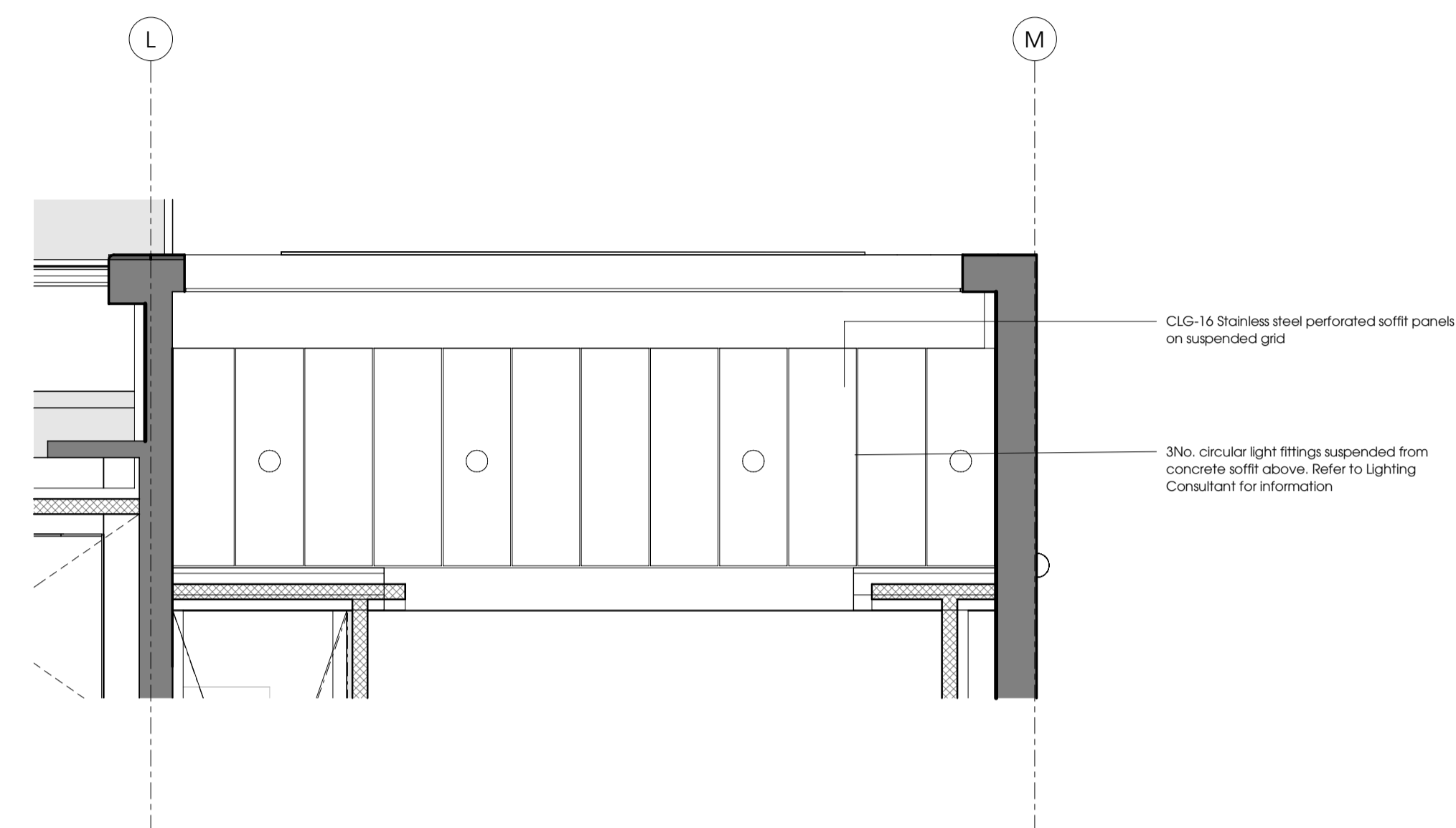
Survey Note

1. This drawing has been prepared using recent survey information where access has been possible. Large areas of the Poultry Market remain tenanted and it has therefore not been possible to provide survey information for these areas. Some assumed information has been drawn from earlier survey and historic drawings but this remains unconfirmed. Where possible, drawn information is based on 3D survey information provided by Plowman Craven in May 2018. The model was delivered in 5 minutes (01-05). Model revisions P01 to P04 for all volumes: 3426-005-PCI-(VOLUME) Z2-M3-g=0001- RM-S1 I=01

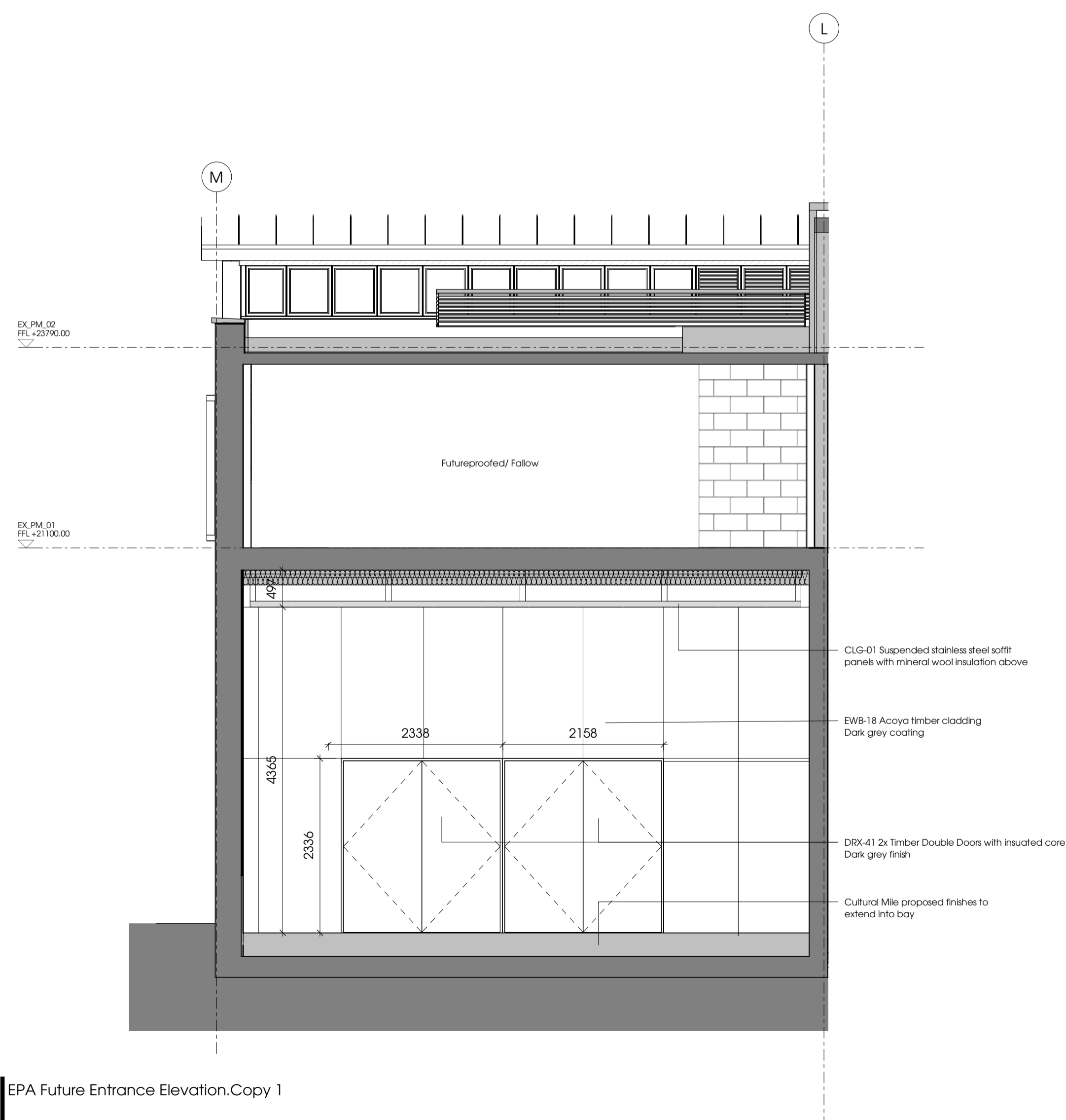
2. The survey models provided by Plowman Craven are in Revit version 2017. These have subsequently been upgraded to Revit 2018 by the Design Team for use in producing 2D drawings. Due to the upgrade process, the Design Team accept no responsibility for the accuracy / validation of the digital data supplied.



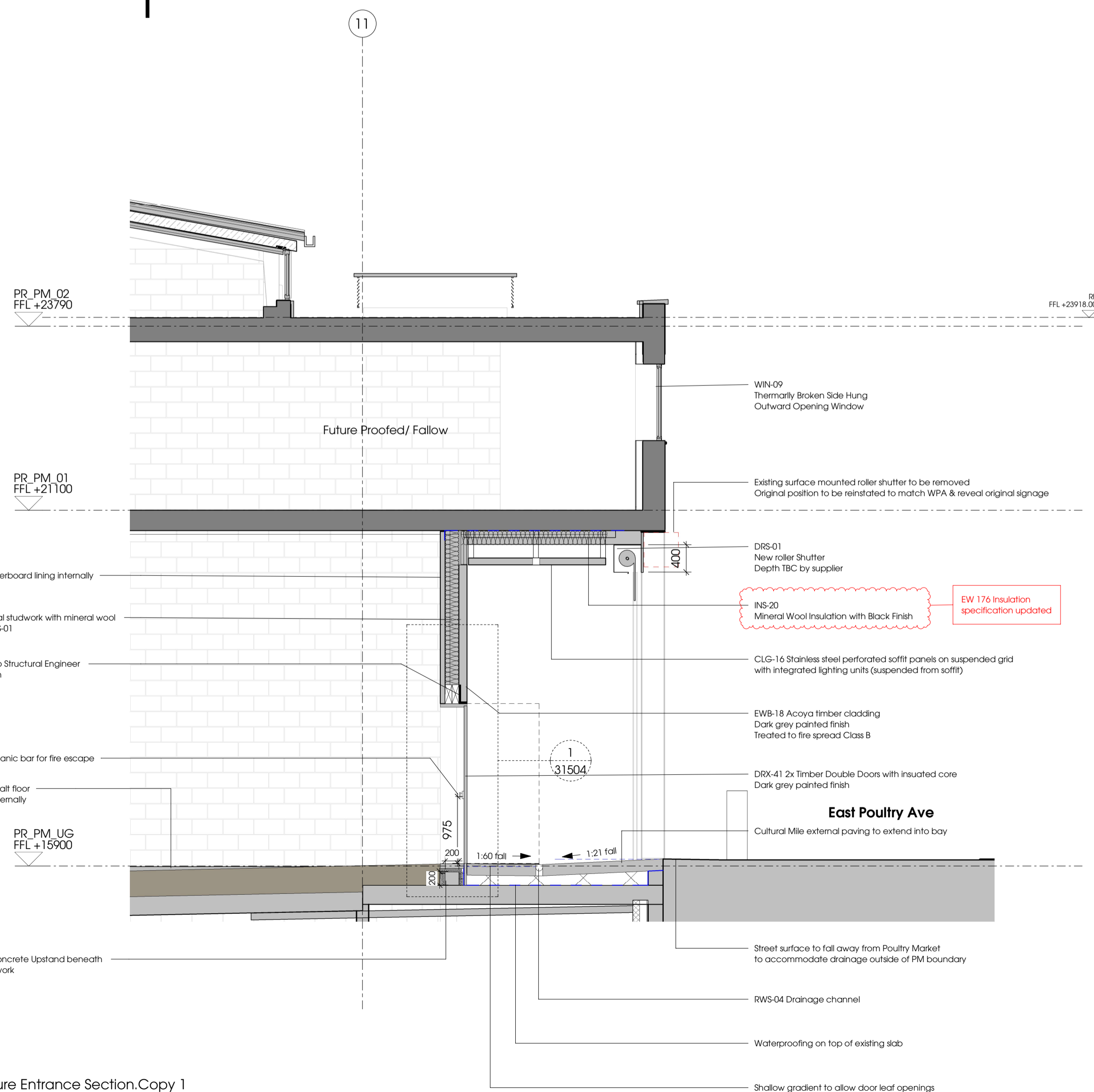
1 | EPA Future Entrance Plan.Copy 1



4 | EPA Future Entrance RCP.Copy 1



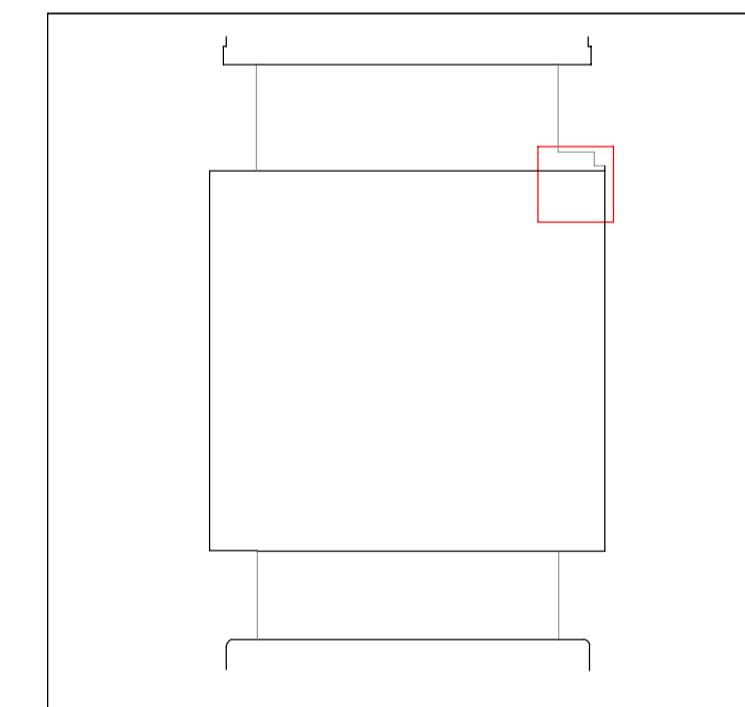
3 | EPA Future Entrance Elevation.Copy 1



2 | EPA Future Entrance Section.Copy 1

C01	18/07/2023	EW 176 - Soffit Insulation
T01	24/07/2020	SP2/MW4.1/EWP3 Issued for Tender
P03	26/06/2020	SW2/MW4.1/ EWP3 Draft Issue
P02	22/05/2020	SW2/MW4.1 Design Freeze
P01	16/03/2020	MW 1 Draft Design Freeze
Revision	Date	Description

Location



Stanton Williams
36 Graham Street
London N1 8GJ
Phone +44 (0)20 7880 6400
Email 2125@stantonwilliams.com
www.stantonwilliams.com

STANTON
WILLIAMS

Asif Khan

JULIAN HARRAP
— ARCHITECTS LLP —

Project

Project
Museum of London

Drawing Title

PM - EPA Future Entrance - Main Works

Drawn	Checked	Approved	Status
PS	MT	AF	Stage 5

Date	Scale @ A1	Project No.	Revision
18/07/23	1 : 50	2125	C01

Drawing No. 21525

Project	Originator	Volume	Level	Type	Role	Reference	Revision	Suitability
2125	SWA	PM	ZZ	DR	A	21525	C01	S4