

PM.DRX.00.001

Door Type: DRS-01 (Part of roller shutter specification)  
Description: Nort East Roller Shutter Access Door  
Material: Steel  
Finish: PPC Orange  
Security Rating: SR2  
ACS: Dual Direction with Access Cards  
Notes: - Part of roller shutter product  
- Solid lath of door to match adjacent moving roller shutter  
- Ramped threshold detail for wheelchair access  
- Open triangular lattice above door to match historic condition  
- Panic bar to inside

PM.DRX.00.002

Door Type: DRX-02  
Description: External fire escape final exit door  
Material: Timber  
Finish: Painted  
Security Rating: SR2  
ACS: Contact Set  
Notes: - Panic bar for fire escape

\* Refer to door schedule 31900 for full requirements

PM.DRX.00.003

Door Type: DRX-14  
Description: Cycle Store Door  
Material: Insulated steel  
Finish: PPC Orange  
Security Rating: SR2  
ACS: Access Cards Dual Direction  
Notes:

\* Refer to door schedule 31900 for full requirements

© Stanton Williams ©Asif Khan ©Julian Harrap Architects  
All rights described in Chapter IV of the Copyright, Designers and Patents Act 1998 have been asserted.

All levels are in metres above Ordnance Datum.

All dimensions should be checked on site. Do not scale from this drawing. Stanton Williams to be advised of any variation between the drawings and site conditions.

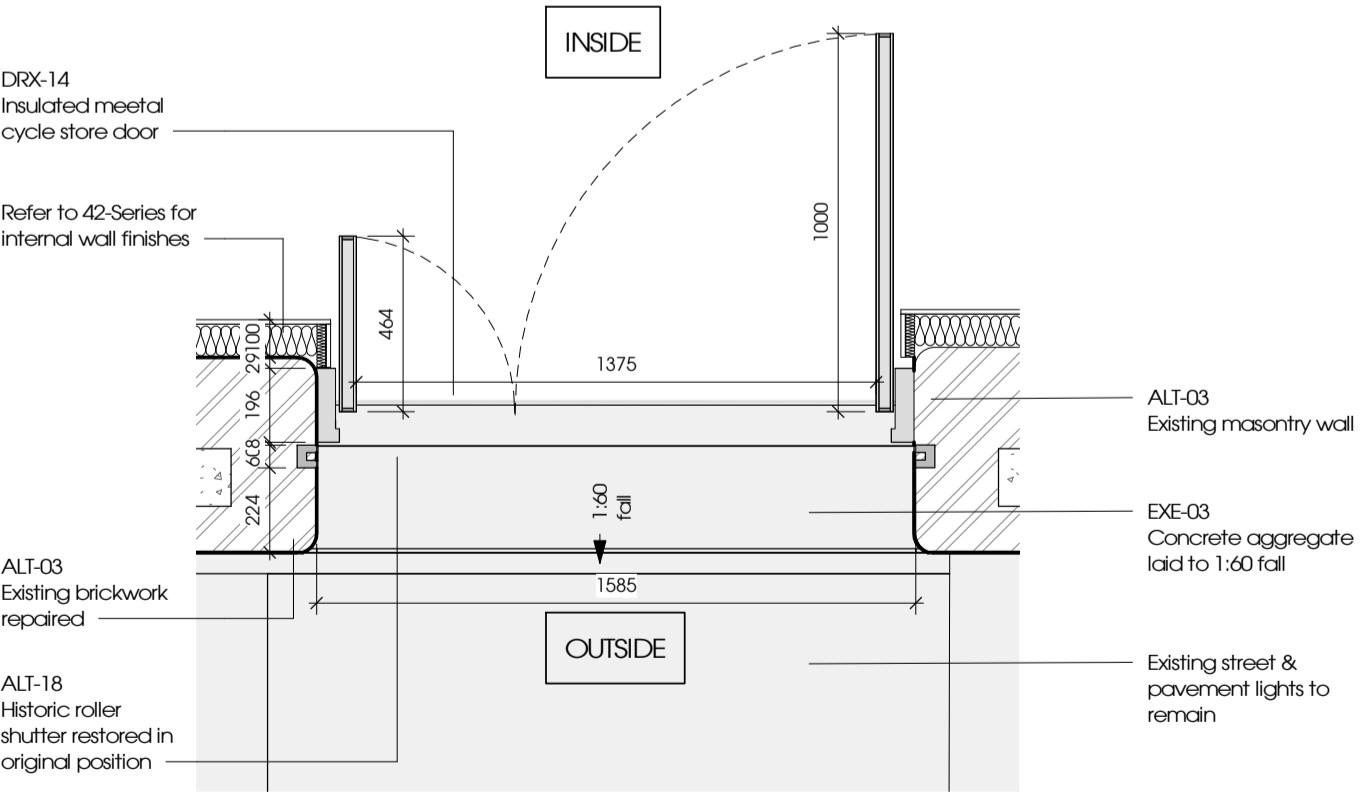
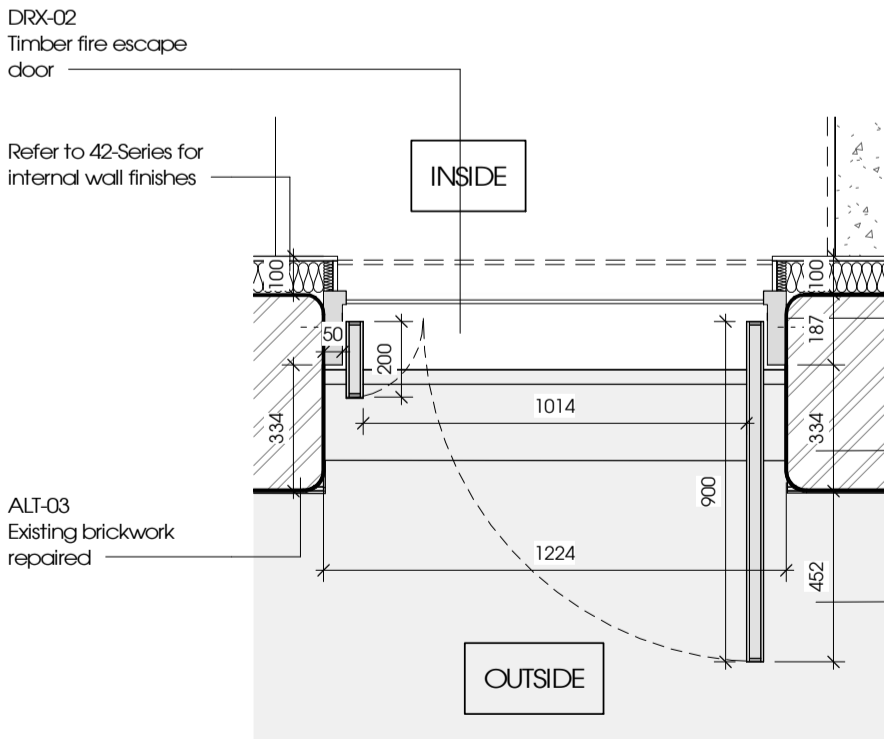
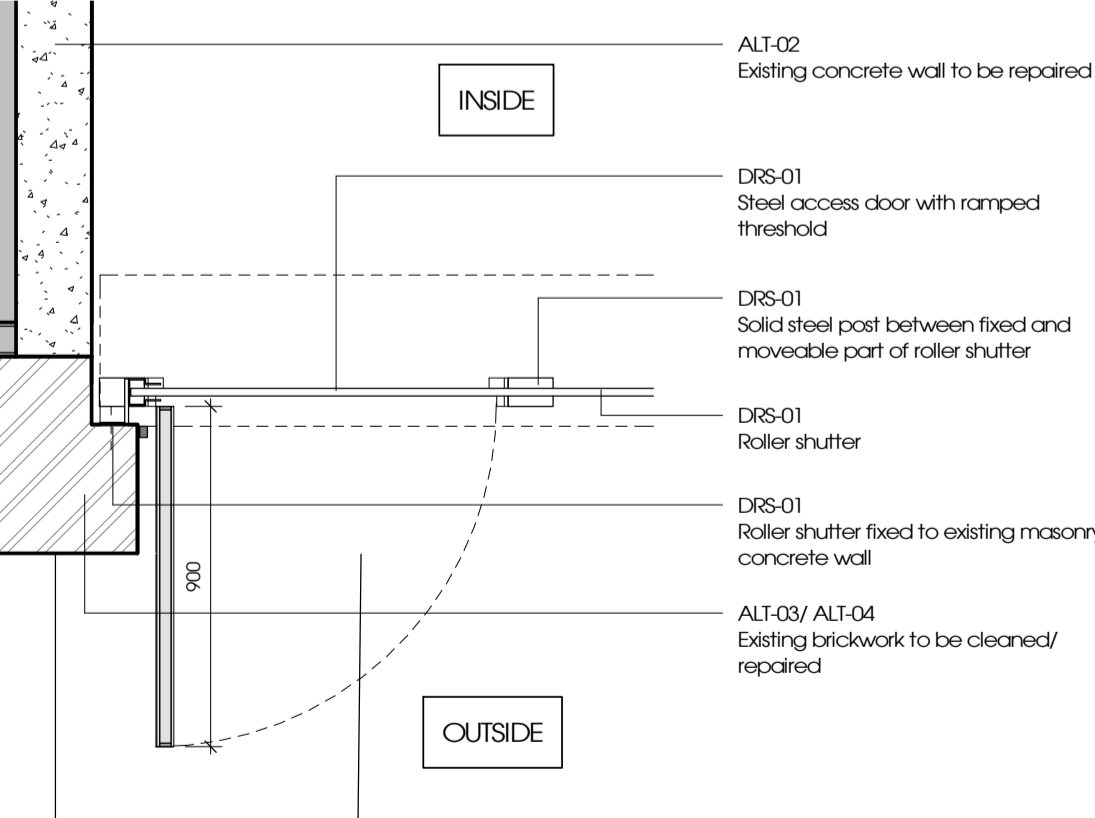
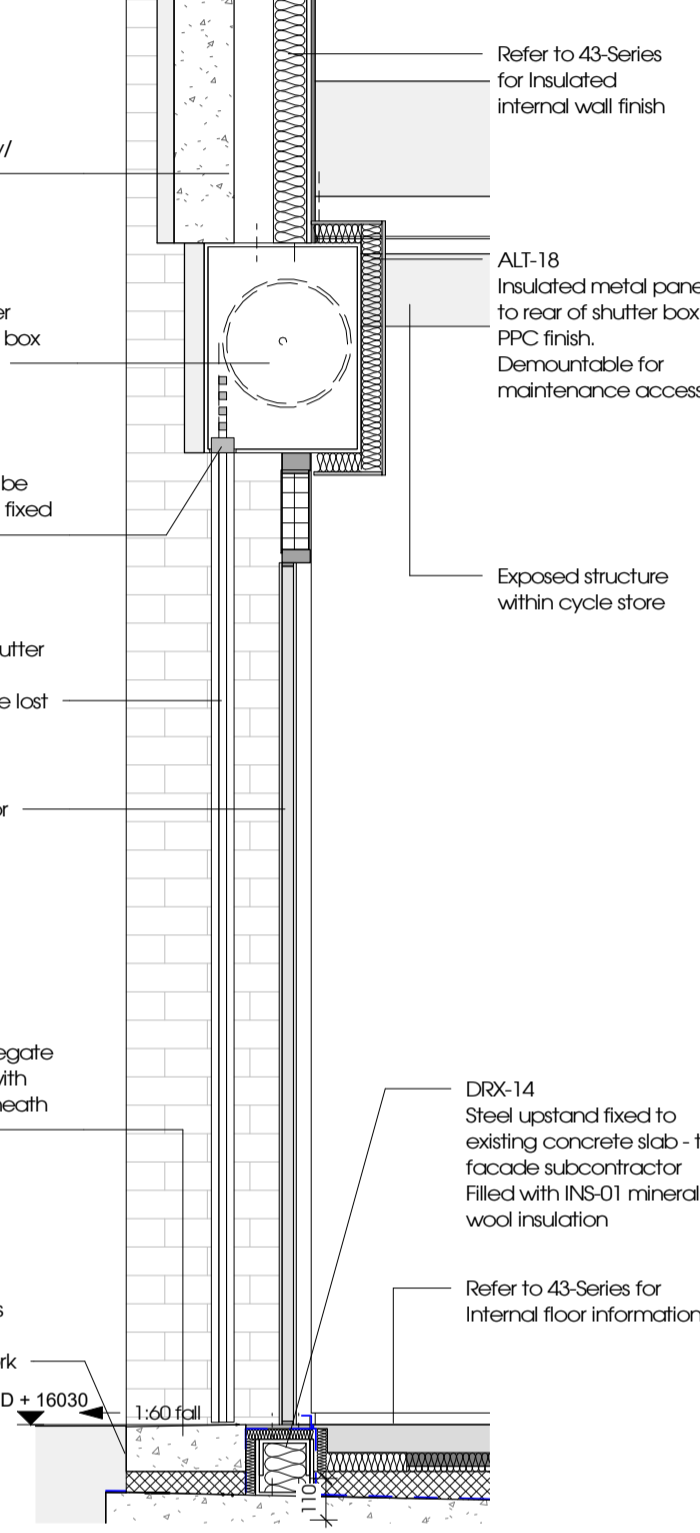
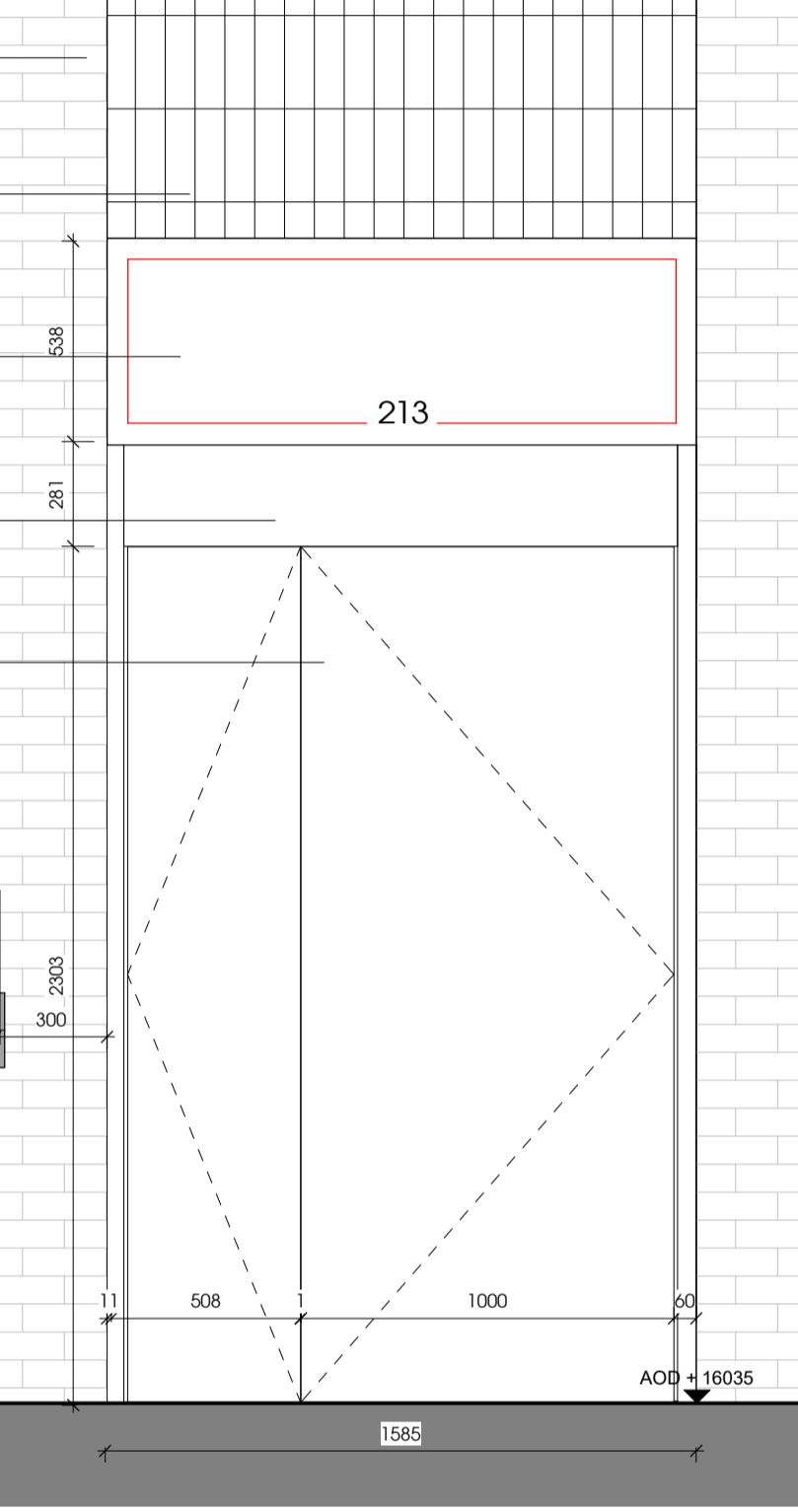
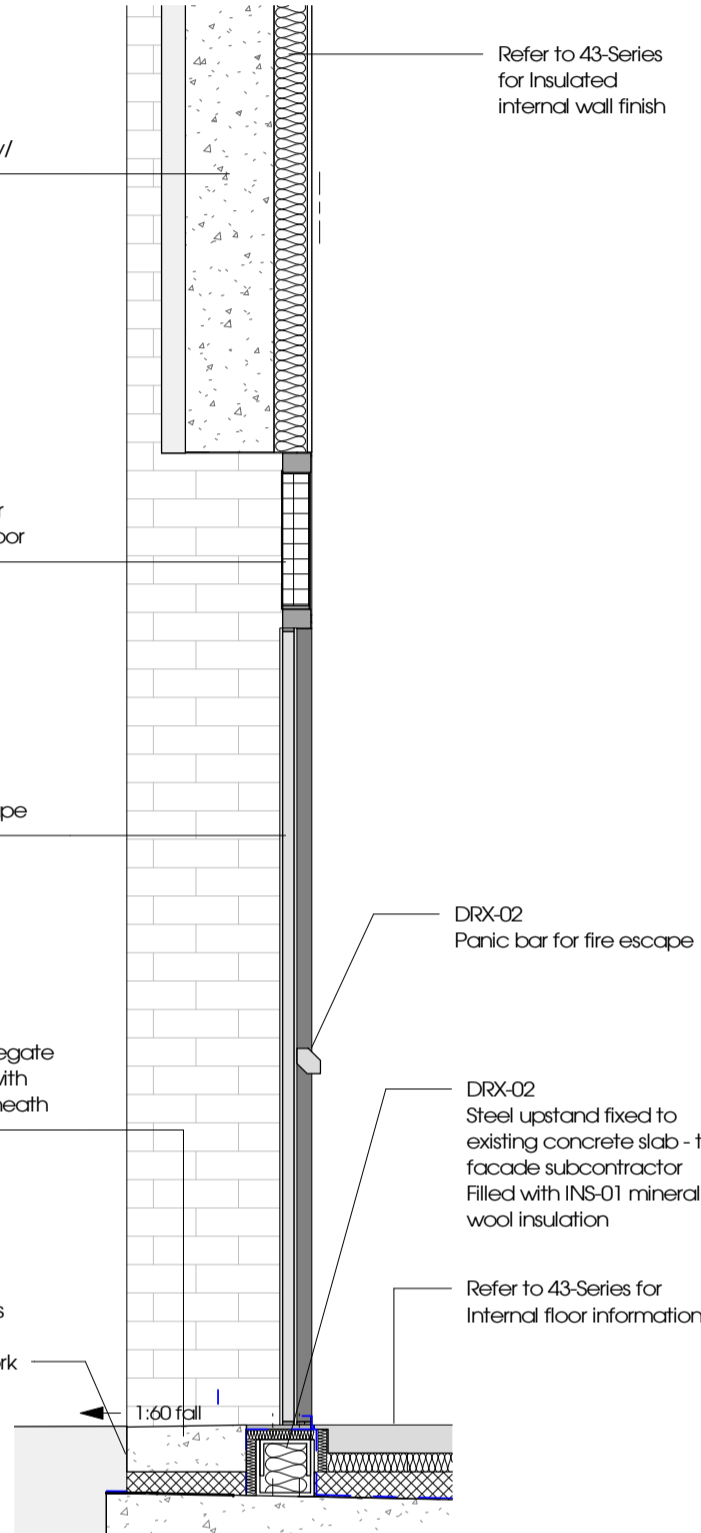
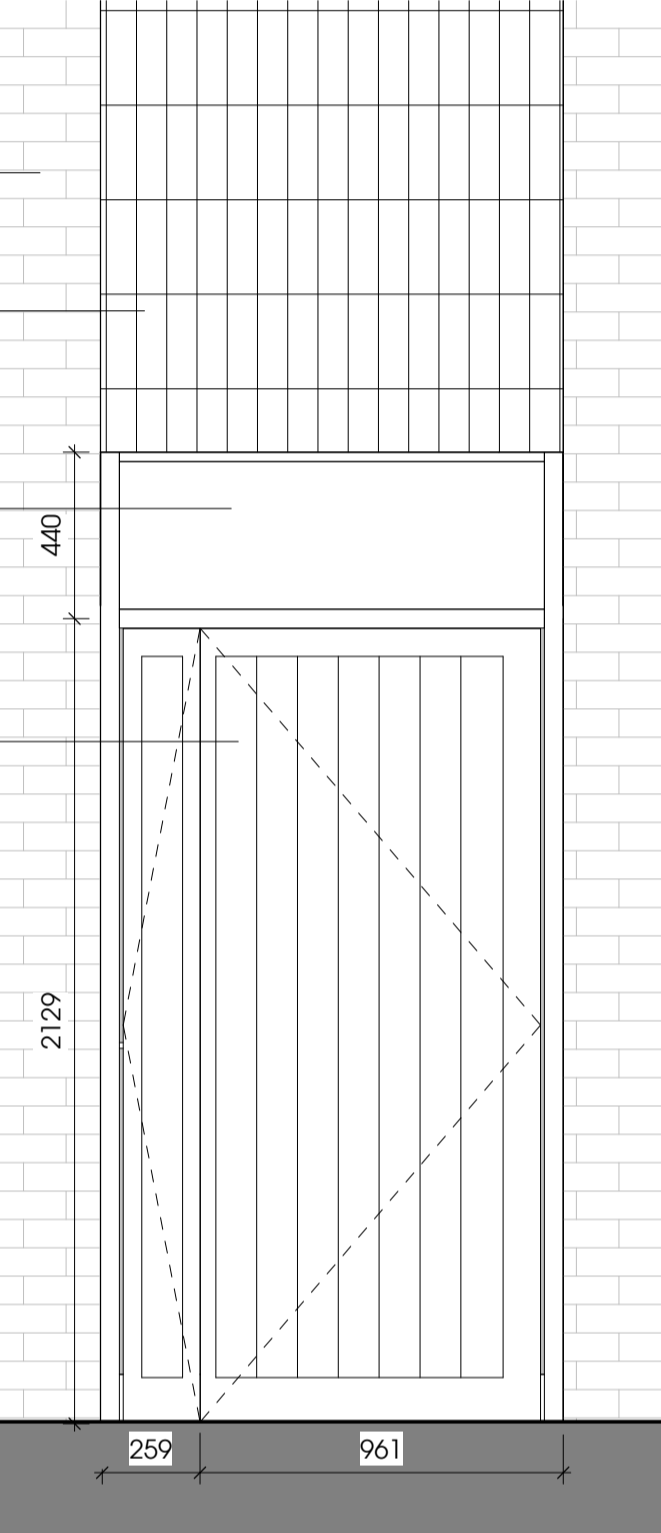
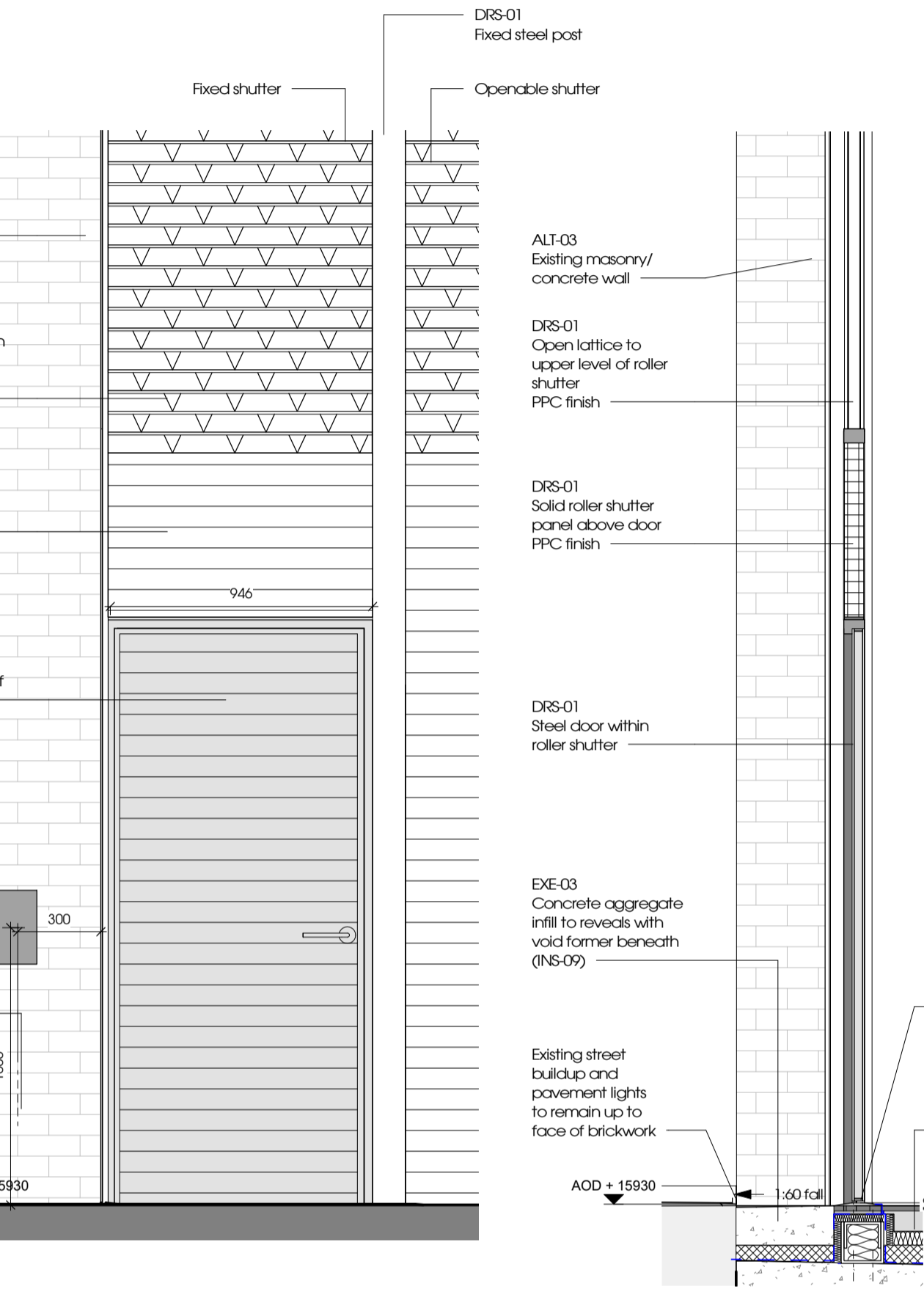
To be read in conjunction with: architectural drawings and specification, structural and services engineers information, and fire / acoustic/ security strategies.

**Safety, health and environmental information**  
Please refer to pre-construction information and risk register. The notes below refer specifically to the information shown on this drawing.

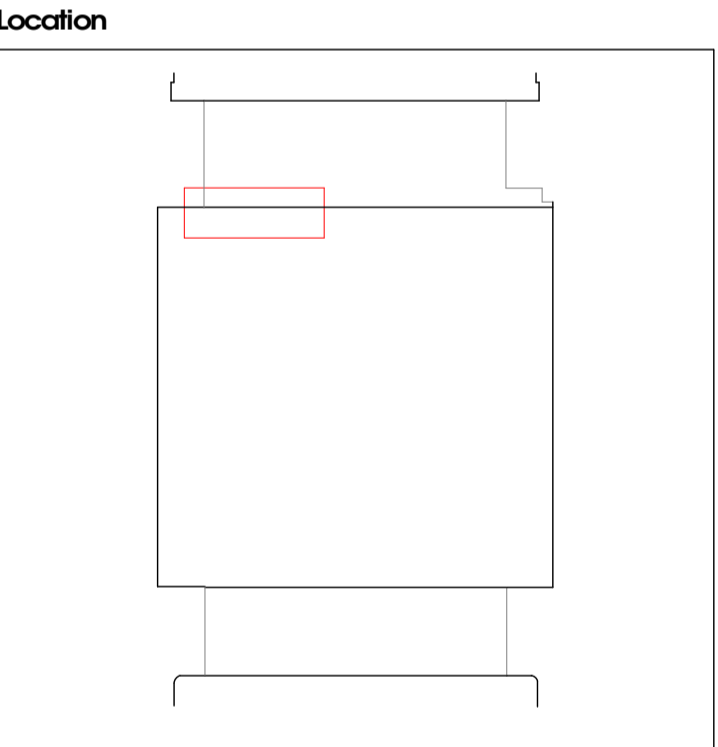
Description of Design Risk

For general/ site-wide risks and all risk and mitigation description refer to Bureau veritas document CDM hazard register

**Survey Note**  
1 This drawing has been prepared using recent survey information where access has been possible. Large areas of the Poultry Market remain tenanted and it has therefore not been possible to provide survey information for these areas. Some assumed information has been drawn from earlier survey and historic drawings where possible but this remains unconfirmed.  
2 The survey models provided by Plowman Craven are in Revit version 2017. These have subsequently been upgraded to Revit 2018 by the Design Team for use in producing 2D drawings. Due to the upgrade process, the Design Team accept no responsibility for the accuracy / validation of the digital data supplied.



T01	24/07/2020	SPT2/MW4.1/EWP3 Issued for Tender
P01	26/06/2020	SWT2/MW4.1/ EWP3 Draft Issue
Revision	Date	Description



Stanton Williams  
36 Graham Street  
London N1 6SL  
Phone +44 (0)20 7880 6400  
Email 21@stantonwilliams.com  
www.stantonwilliams.com

Asif Khan Ltd  
24/28 Pritchard Road  
London E2 9AP  
Phone +44 (0)20 7729 3773  
Email 21@asifkhan.com  
www.asifkhan.com

Julian Harrap Architects LLP  
99 Kensington Road  
London E2 8AG  
Phone +44 (0)20 7729 5111  
Email admin@julianharraparchitects.co.uk  
www.julianharraparchitects.co.uk

**Project**  
Museum of London

**Drawing Title**  
PM - External Doors Sheet 01

Drawn	Checked	Approved	Status
PS	MT	AF	Stage 4

Date	Scale @ A1	Project No.	Revision
26/06/20	As indicated	2125	T01

Project	Originator	Volume	Level	Type	Role	Reference	Revision	Suitability
2125	SWA	PM	ZZ	DR	A	31501	T01	S4