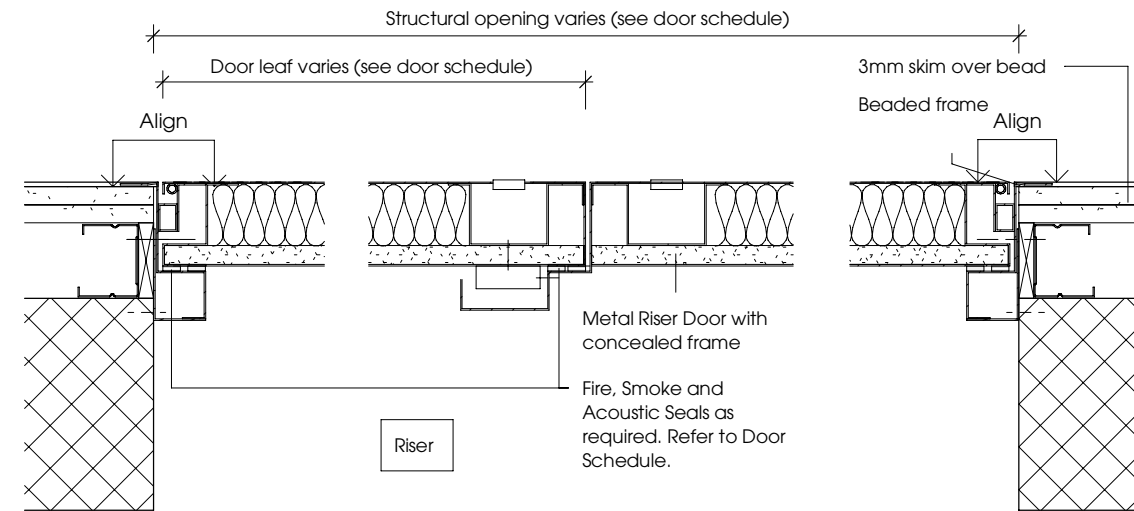
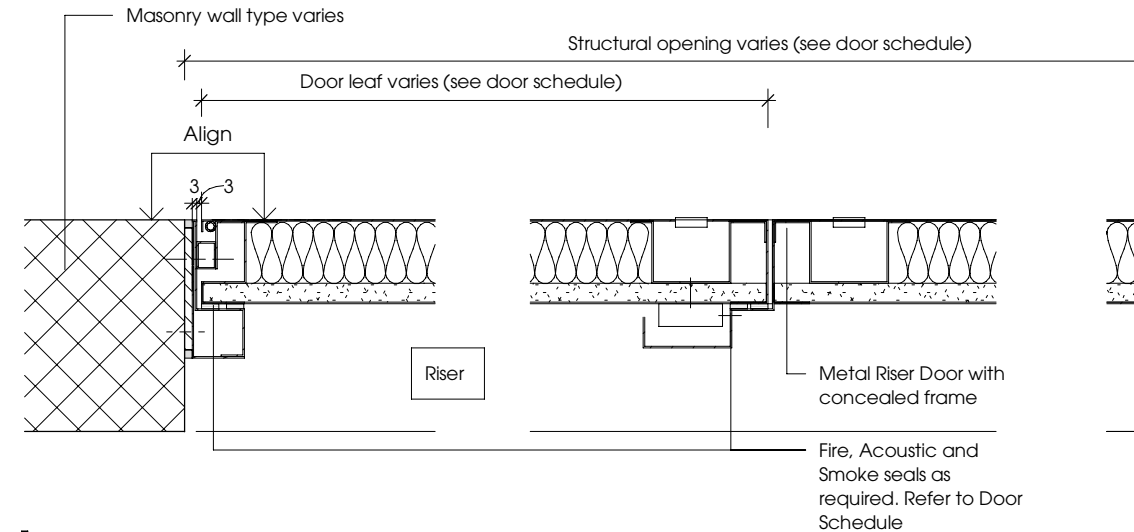


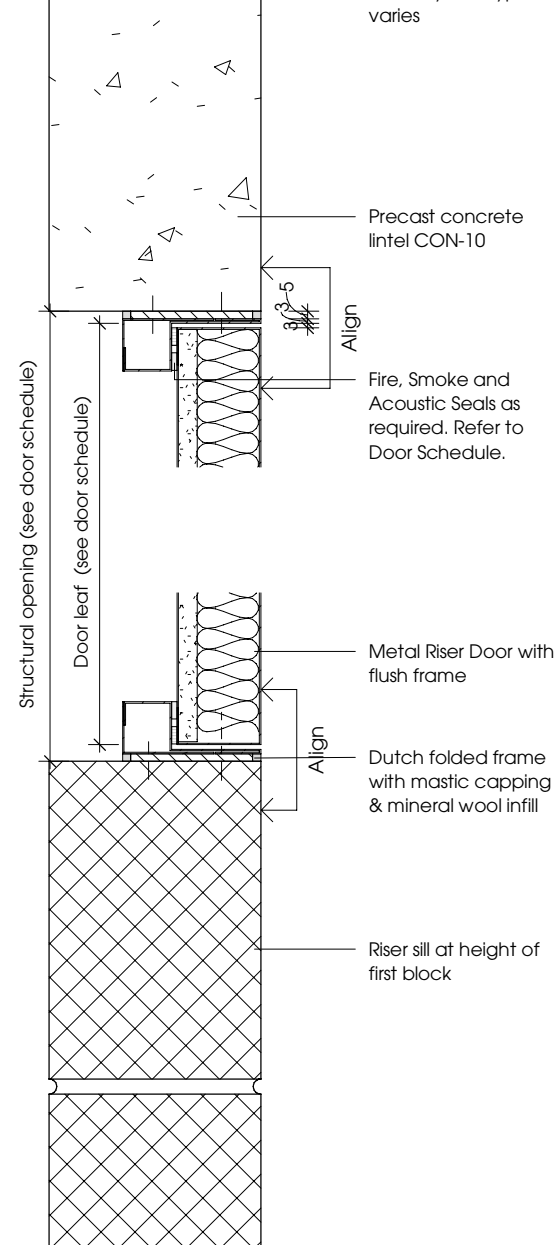
1 | DRM-05 in Masonry Wall Jamb Detail



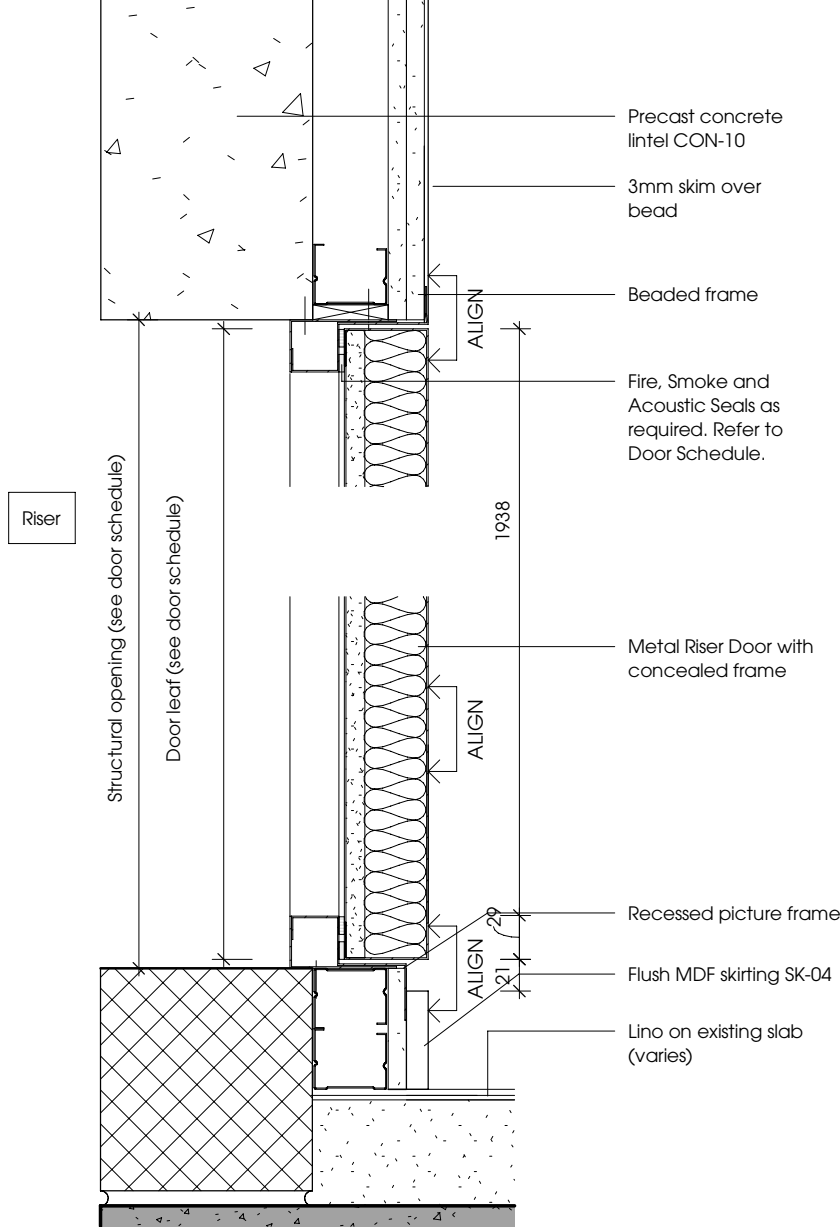
2 | DRM-05 in Plasterboard Faced Masonry Wall Jamb Detail



3 | DRM-05 in Masonry Wall Jamb Detail



4 | DRM-05 & 08 in Masonry Wall Head and Jamb Detail



5 | DRM-05 & 08 in Plasterboard Faced Masonry Wall Head and Jamb Detail

© Stanton Williams ©Asif Kahn ©Julian Harrap
All rights described in Chapter IV of the Copyright, Designers and Patents Act 1998 have been asserted.

All levels are in metres above Ordnance Datum.

All dimensions should be checked on site. Do not scale from this drawing. Stanton Williams to be advised of any variation between the drawings and site conditions.

To be read in conjunction with: architectural drawings and specification, structural and services engineers information, and fire / acoustic/ security strategies.

Safety, health and environmental information

Please refer to pre-construction information and risk register. The notes below refer specifically to the information shown on this drawing.



Notes

Survey Note

1 This drawing has been prepared using recent survey information where access has been possible. Large areas of the Poultry Market remain tenanted and it has therefore not been possible to provide survey information for these areas. Some assumed information has been drawn from earlier survey and historic drawings where possible but this remains unconfirmed.

2 The survey models provided by Rowman Craven are in Revit version 2017. These have subsequently been upgraded to Revit 2018 by the Design Team for use in producing 2D drawings. Due to the upgrade process, the Design Team accept no responsibility for the accuracy / validation of the digital data supplied.

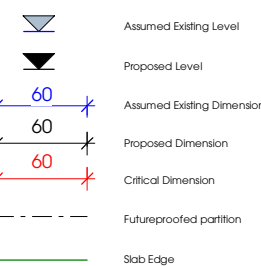
Drawing Notes

1 To be read in conjunction with: Fire strategy - 0021 series, Acoustic strategy 0022 series, Security strategy - 0023 series, Layout plans - 0040 series, Internal walls - 22 series

2 Where setting out from existing elements, contractor to survey prior to fabrication

3 Contractor to ensure that all performance requirements are met

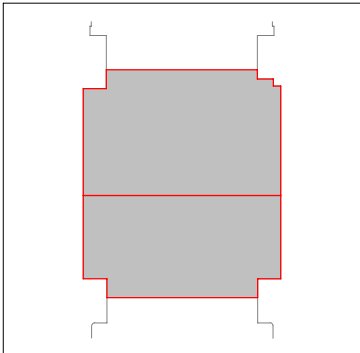
Key



T01	09/03/2021	MW4.2 Issued for Tender
C01	18/03/2024	EWN123 - Issued for internal timber and metal doors

Revision	Date	Description
----------	------	-------------

Location



Stanton Williams
36 Graham Street
London N1 8GJ
Phone +44 (0)20 7880 6400
Email 2125@stantonwilliams.com
www.stantonwilliams.com

Asif Khan Ltd.
24-26 Richey Road
London E2 9AP
Phone +44(0)20 7729 3773
Email 2108@asifkhan.com
www.asifkhan.com

Julian Harrap Architects LLP
95 Kingsland Road
London E2 8AG
Phone +44 (0)20 7729 8111
Email admin@julianharraparchitects.co.uk
www.julianharraparchitects.co.uk

STANTON
WILLIAMS

Asif Khan

JULIAN HARRAP
— ARCHITECTS LLP —

Project

Museum of London

Drawing Title

PM - Internal Doors - Metal - Typical Details
DRM-05, 08

Drawn	Checked	Approved	Status
TC	AH	AF	Stage 5

Date	Scale @ A3	Project No.	Revision
29/01/21	1 : 5	2125	C01

Drawing No. 32712

Project	Originator	Volume	Level	Type	Role	Number	Revision	Suitability
2125	SWA	PM	ZZ	DR	A	32712	C01	S4