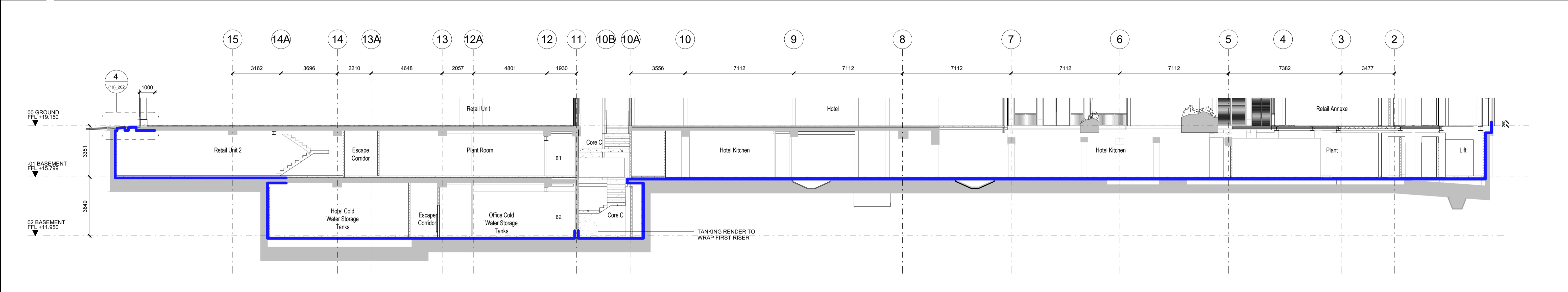
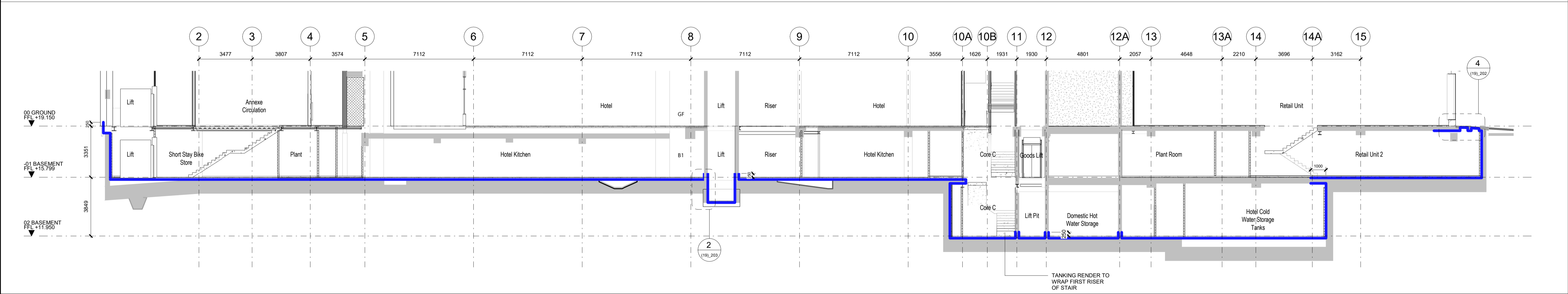


1 SCP AA 125 - WATERPROOFING SCOPE 1 : 125



2 SCP BB 125 - WATERPROOFING SCOPE OPT B 1 : 125



3 SCP CC 125 - WATERPROOFING SCOPE 1 : 125

KEY	<div><div></div>WPS-100 + WPS-200 Cementitious tanking mortar</div>	REV	DATE	DESCRIPTION	NOTE		<div>ALLFORD HALL MONAGHAN MORRIS</div> <div>ARCHITECTS LTD MORELANDS, 5-23 OLD STREET LONDON EC1V 9HL TEL 020 7251 5261 FAX 020 7251 5123 WEB WWW.AHMM.CO.UK</div> <div>job title BERKELEY STREET</div> <div>drawing title / location WATERPROOFING SCOPING SECTIONS - SHEET 01</div> <div><div>drawn by SB</div><div>checked BB</div><div>scale 1 : 125@A1</div><div>status TENDER</div></div> <div><div>project 16014</div><div>zone A</div><div>source (19)_200</div><div>classification T01</div><div>drawing no.</div><div>revision</div></div>	
		T01	09/03/20	STAGE 4 ISSUE	CONSULTANTS			NOTE
		CLIENT:	CROSSTREE REAL ESTATE PARTNERS LLP	When this drawing is issued in uncontrolled CAD format it will be accompanied by a PDF version and is issued to enable the recipient to prepare their own documents / models / drawings for which they are solely responsible. The recipient should report all drawing errors, omissions and discrepancies to the architect. All dimensions should be checked on site by the contractor and such dimensions shall be the contractor's responsibility.				
		STRUCTURAL ENGINEER:	HEYNE TILLET STIEL					
		MECHANICAL ENGINEER:	HURLEY PALMER FLATT					
		PROJECT MANAGER:	JACKSON COLES					
		COST CONSULTANT:	CORE FIVE LLP	Allford Hall Monaghan Morris Limited accepts no responsibility or liability for:- - any use of this drawing by parties other than the party for whom it was prepared or for purposes other than those for which it was prepared - any alterations or additions to or discrepancies arising out of changes to the background information on which the drawings are based that was current at the time of issue, and which occur to that information after it has been issued by AHMM - any loss or degradation of the information held in this drawing resulting from the translation from the original file format to any other file format or from the recipient's reading of it in any other programme or any version of the programme other than that which was used to prepare it - the accuracy of survey information provided by others or for any costs, claims, proceedings and expenses arising out of reliance on such information - any scaling from this drawing other than by the local planning authority solely for the purposes of the planning application to which it relates				
		HOTEL ARCHITECT:	DEXTER MOREN ASSOCIATES					
		SUSTAINABILITY CONSULTANT:	EIGHT ASSOCIATES					
		PLANNING CONSULTANT:	DP9					
PROJECT MANAGER:	JACKSON COLES							
ACOUSTIC CONSULTANT:	HANN TUCKER							