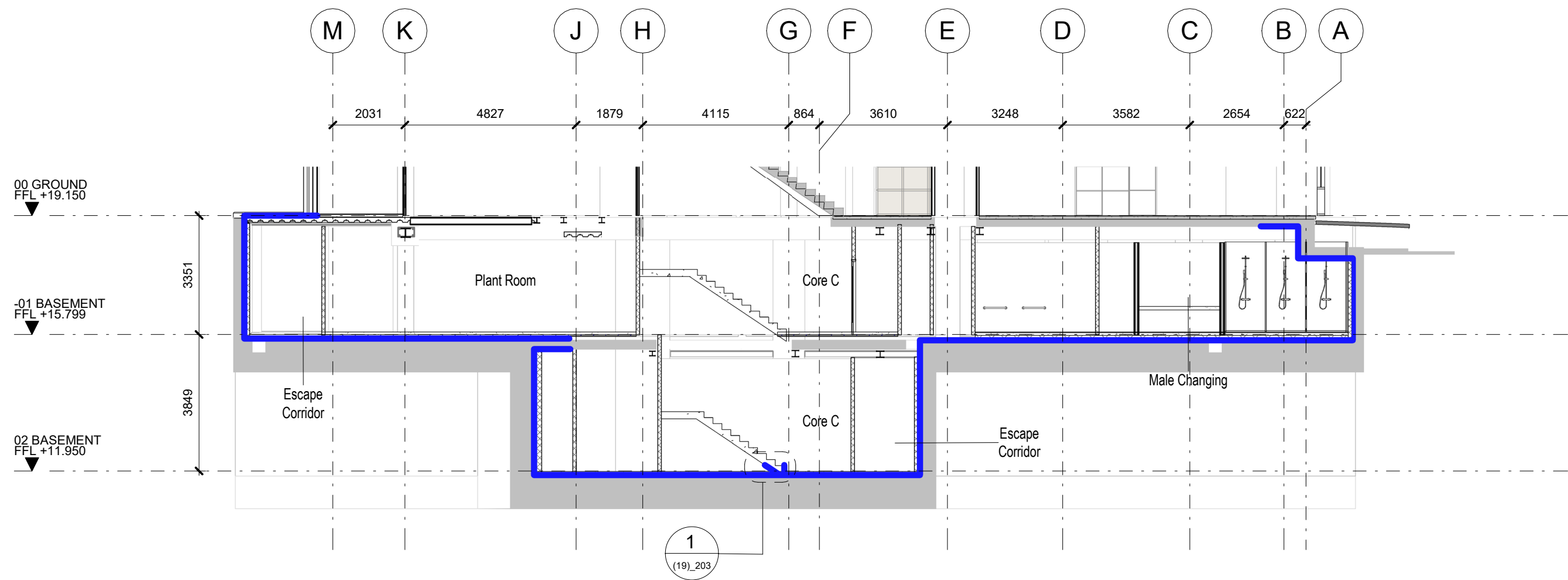
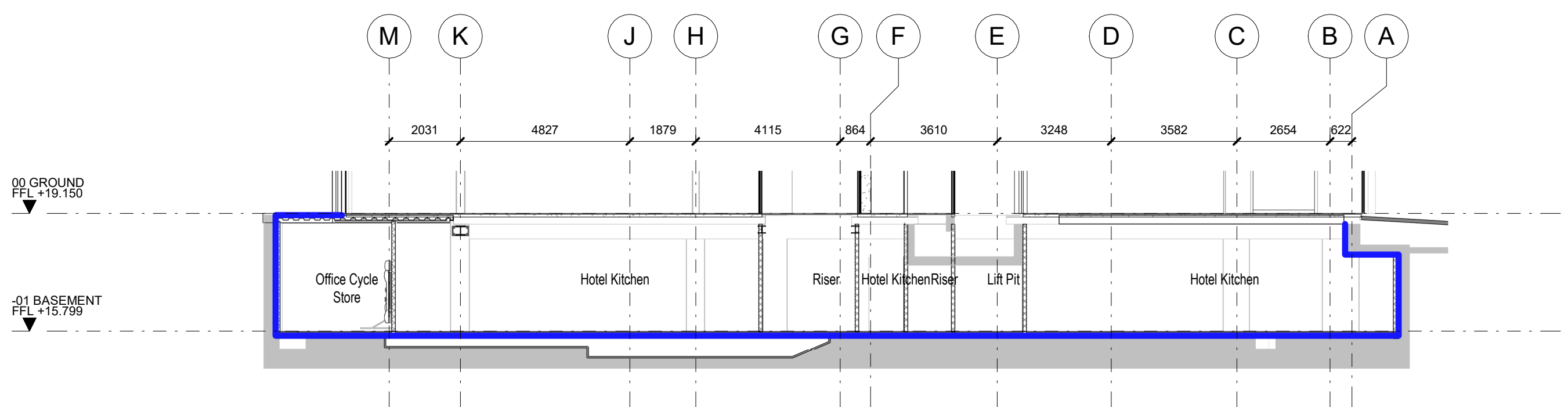


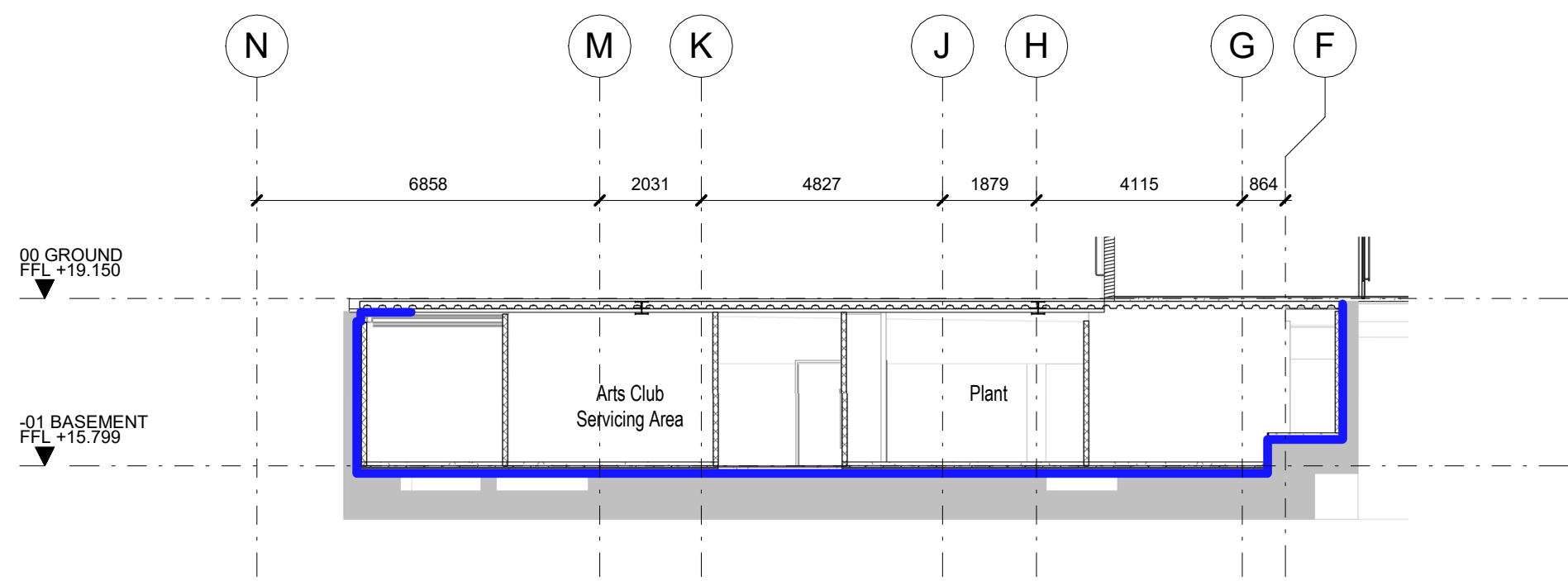
1 SCP DD 125 - WATERPROOFING SCOPE 1 : 125



2 SCP EE 125 - WATERPROOFING SCOPE 1 : 125



3 SCP GG 125 - WATERPROOFING SCOPE 1 : 125



4 SCP HH 125 - WATERPROOFING SCOPE 1 : 125

KEY		REV		DATE	DESCRIPTION	CONSULTANTS		NOTE			
<div>WPS-100 + WPS-200</div> <div>Cementitious tanking mortar</div>		T01		09/03/20	STAGE 4 ISSUE	CLIENT: CROSSTREE REAL ESTATE PARTNERS LLP		When this drawing is issued in uncontrolled CAD format it will be accompanied by a PDF version and is issued to enable the recipient to prepare their own documents / models / drawings for which they are solely responsible. The recipient should report all drawing errors, omissions and discrepancies to the architect. All dimensions should be checked on site by the contractor and such dimensions shall be the contractor's responsibility.			
						STRUCTURAL ENGINEER: HEYNE TILLET STIEL					
						MECHANICAL ENGINEER: HURLEY PALMER FLATT					
						PROJECT MANAGER: JACKSON COLES					
						COST CONSULTANT: CORE FIVE LLP		Allford Hall Monaghan Morris Limited accepts no responsibility or liability for:- - any use of this drawing by parties other than the party for whom it was prepared or for purposes other than those for which it was prepared - any alterations or additions to or discrepancies arising out of changes to the background information on which the drawings are based that was current at the time of issue, and which occur to that information after it has been issued by AHMM - any loss or degradation of the information held in this drawing resulting from the translation from the original file format to any other file format or from the recipient's reading of it in any other programme or any version of the programme other than that which was used to prepare it			
						HOTEL ARCHITECT: DEXTER MOREN ASSOCIATES					
						SUSTAINABILITY CONSULTANT: EIGHT ASSOCIATES					
						PLANNING CONSULTANT: DP9					
						PROJECT MANAGER: JACKSON COLES					
				ACOUSTIC CONSULTANT: HANN TUCKER		- the accuracy of survey information provided by others or for any costs, claims, proceedings and expenses arising out of reliance on such information - any scaling from this drawing other than by the local planning authority solely for the purposes of the planning application to which it relates					