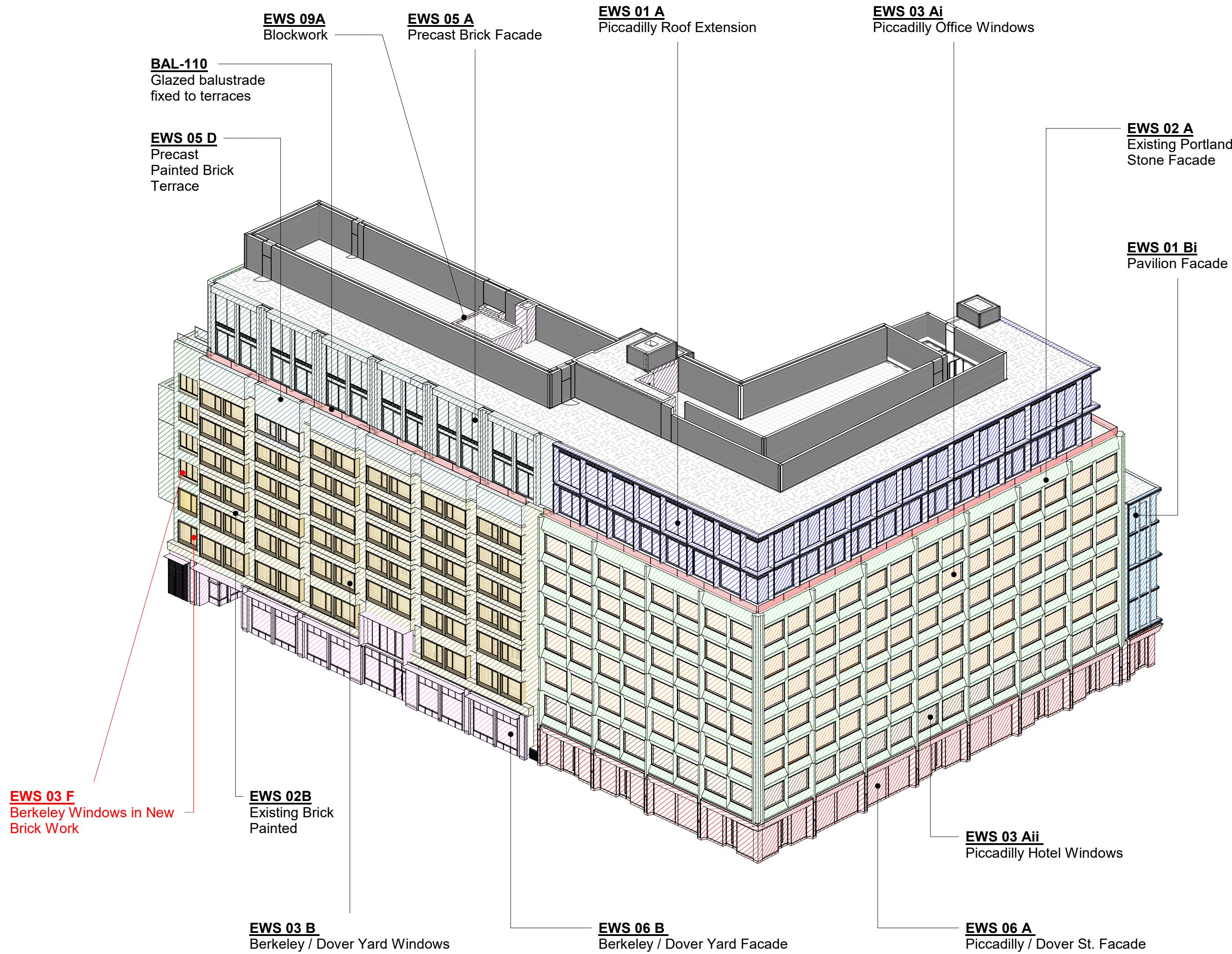
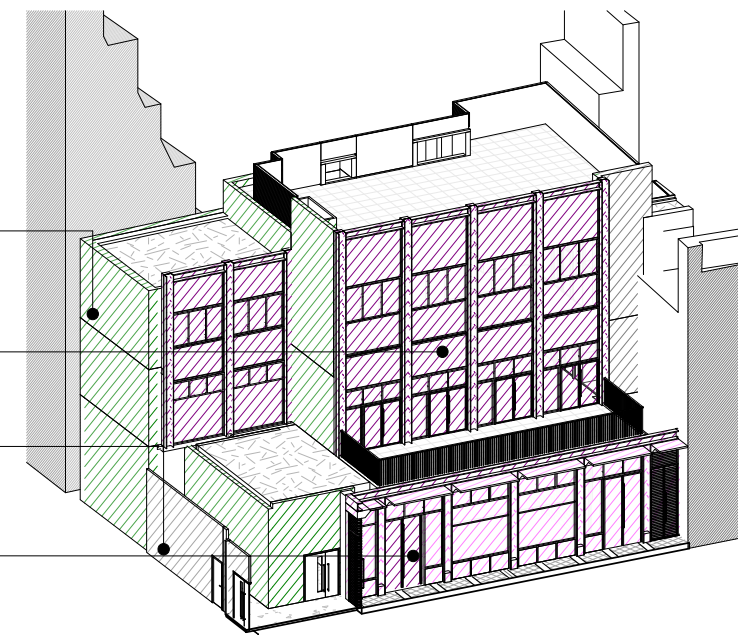


BIRDSEYE VIEW FROM SOUTHEAST  
PICCADILLY / BERKELEY ST ELEVATIONS

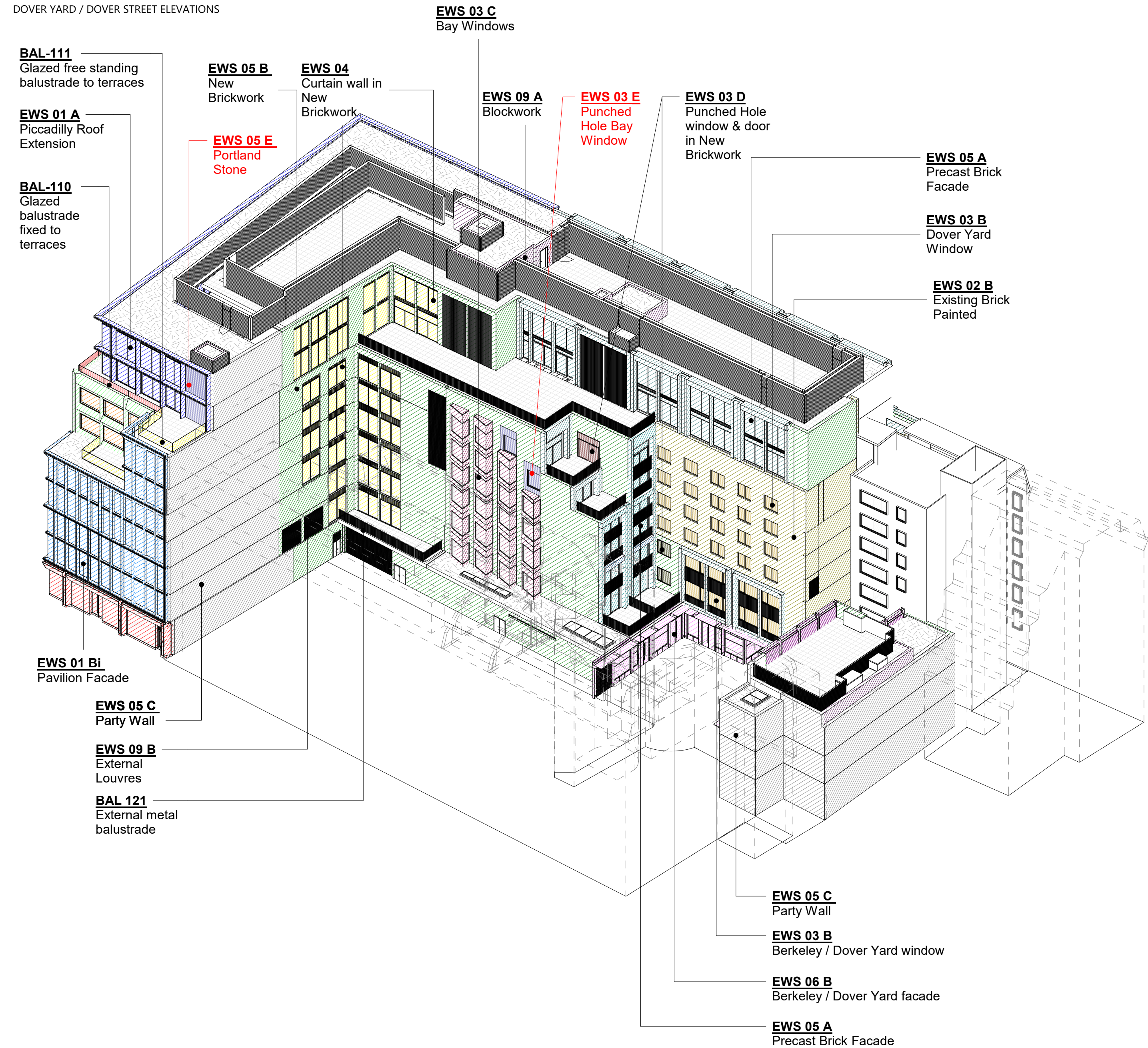


ANNEXE FACADE

- EWS 05 B**  
New  
Brickwork
- EWS 07**  
Annex Facade
- EWS 05 C**  
Party Wall
- EWS 06 B**  
Berkeley / Dover Yard facade



BIRDSEYE VIEW FROM NORTHWEST  
DOVER YARD / DOVER STREET ELEVATIONS

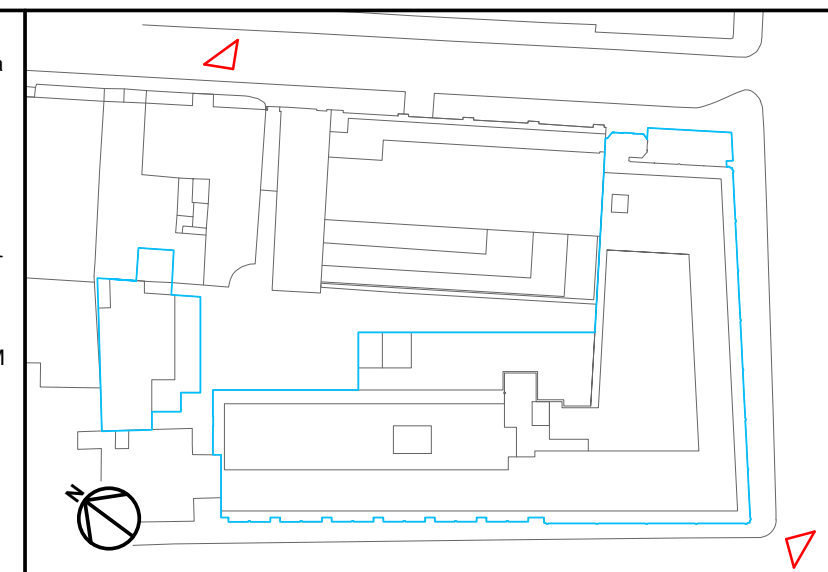


KEY			
EXTERNAL WALL SYSTEMS			
EWS 01 - New Portland Stone Facade			
	EWS 01 A - Piccadilly Roof Extension		EWS 03 E - Punched Hole Bay Windows
	EWS 01 Bi - Pavilion Facade		EWS 03 F - Berkeley Windows in New Brick
EWS 02 - Existing Facade			
	EWS 02 A - Existing Portland Stone Facade		EWS 05 A - Precast Brick Facade
	EWS 02 B - Existing Brick Painted		EWS 05 B - New Brickwork Facade
EWS 03 - New Windows & Doors			
	EWS 03 Ai - Piccadilly Office Windows		EWS 05 C - Party Wall
	EWS 03 Aii - Piccadilly Hotel Windows		EWS 05 D - Pre Cast Painted Brick Terrace
	EWS 03 B - Berkeley / Dover Yard Windows		EWS 05 E - Pre Cast Portland Stone
	EWS 03 C - Bay Windows	EWS 06 - Shopfront / Hotel Facades	
	EWS 03 D - Punched Hole Windows & Doors		EWS 06 A - Piccadilly / Dover St. Facade
			EWS 06 B - Berkeley & Dover Yard Facade
EWS 07 - Annex Facade			
EWS 08 - Passageway Feature Wall			
EWS 09A- Blockwork			
EWS 09B- External Louvres			
Balustrade			
		BAL 110 - Glazed Balustrade Fixed to Terraces	
		BAL 111 - Glazed Free Standing Balustrade to Terraces	
		BAL 121 - Galvanised Steel Balustrade	

REV	DATE	DESCRIPTION
T01	13/03/20	STAGE 4 UPDATE ISSUE
T02	09/04/20	STAGE 4 ISSUE

CONSULTANTS	
CLIENT:	CROSTREE REAL ESTATE PARTNERS LLP
STRUCTURAL ENGINEER:	HEYNE TILLET STIEL
MECHANICAL ENGINEER:	HURLEY PALMER FLATT
PROJECT MANAGER:	JACKSON COLES
COST CONSULTANT:	CORE FIVE LLP
HOTEL ARCHITECT:	DEXTER MOREN ASSOCIATES
SUSTAINABILITY CONSULTANT:	EIGHT ASSOCIATES
PLANNING CONSULTANT:	DP9
PROJECT MANAGER:	JACKSON COLES
ACOUSTIC CONSULTANT:	HANN TUCKER

NOTE	
When this drawing is issued in uncontrolled CAD format it will be accompanied by a PDF version and is issued to enable the recipient to prepare their own documents / models / drawings for which they are solely responsible. The recipient should report all drawing errors, omissions and discrepancies to the architect. All dimensions should be checked on site by the contractor and such dimensions shall be the contractor's responsibility.	
Allford Hall Monaghan Morris Limited accepts no responsibility or liability for:- - any use of this drawing by parties other than the party for whom it was prepared or for purposes other than those for which it was prepared - any alterations or additions to or discrepancies arising out of changes to the background information on which the drawings are based that was current at the time of issue, and which occur to that information after it has been issued by AHMM - any loss or degradation of the information held in this drawing resulting from the translation from the original file format to any other file format or from the recipient's reading of it in any other programme or any version of the programme other than that which was used to prepare it - the accuracy of survey information provided by others or for any costs, claims, proceedings and expenses arising out of reliance on such information - any scaling from this drawing other than by the local planning authority solely for the purposes of the planning application to which it relates	



ALLFORD HALL MONAGHAN MORRIS					
ARCHITECTS Ltd MORELANDS, 5-23 OLD STREET LONDON EC1V 9HL TEL 020 7251 6261 FAX 020 7251 5123 WEB WWW.AHMM.CO.UK					
job title					
BERKELEY STREET					
drawing title / location					
PROPOSED SCOPING 3D DIAGRAM					
drawn by	checked	scale	status		
MH	BB		TENDER		
project	zone	source	classification	drawing no.	revision
16014			A	(21)_220	T02