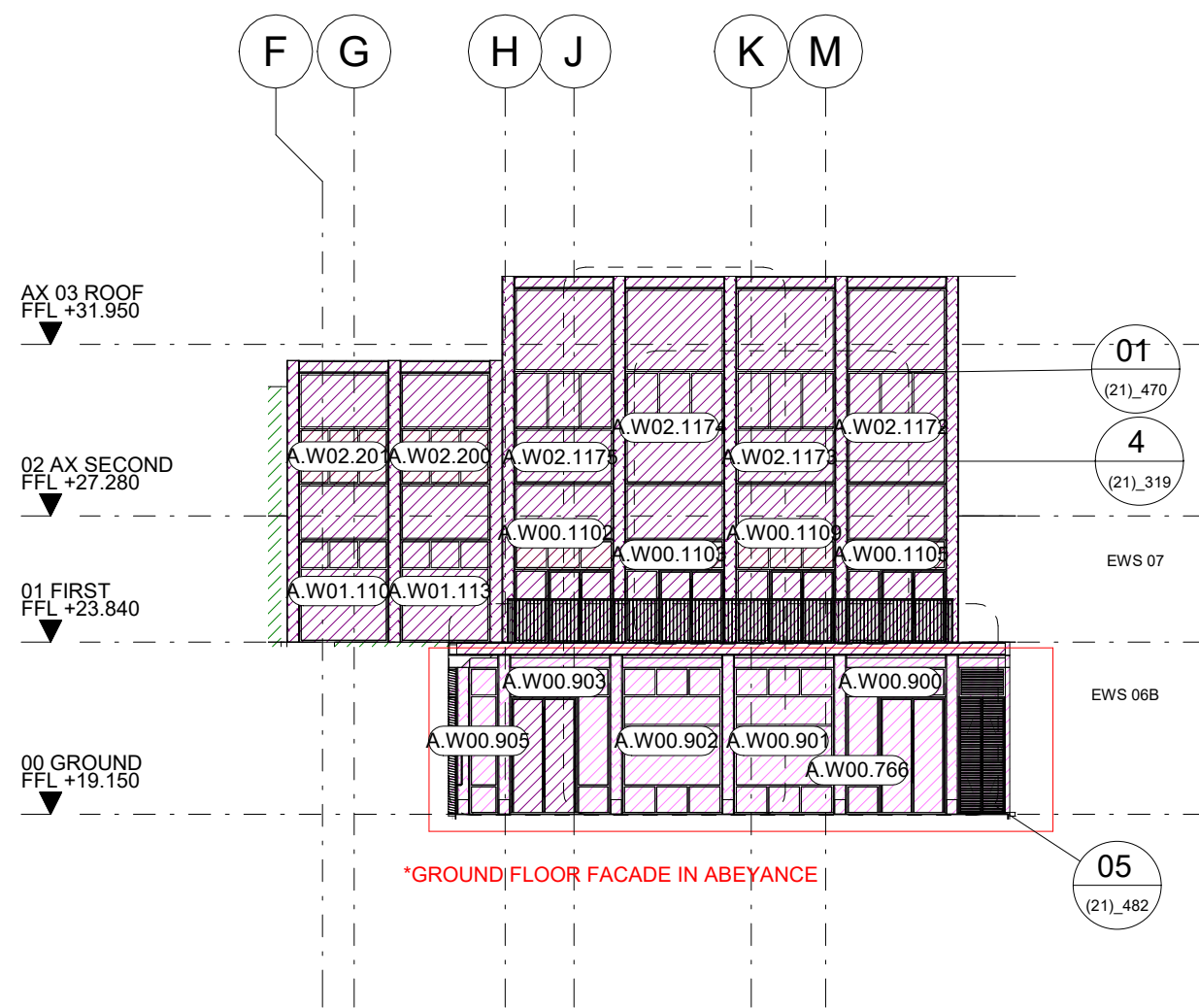
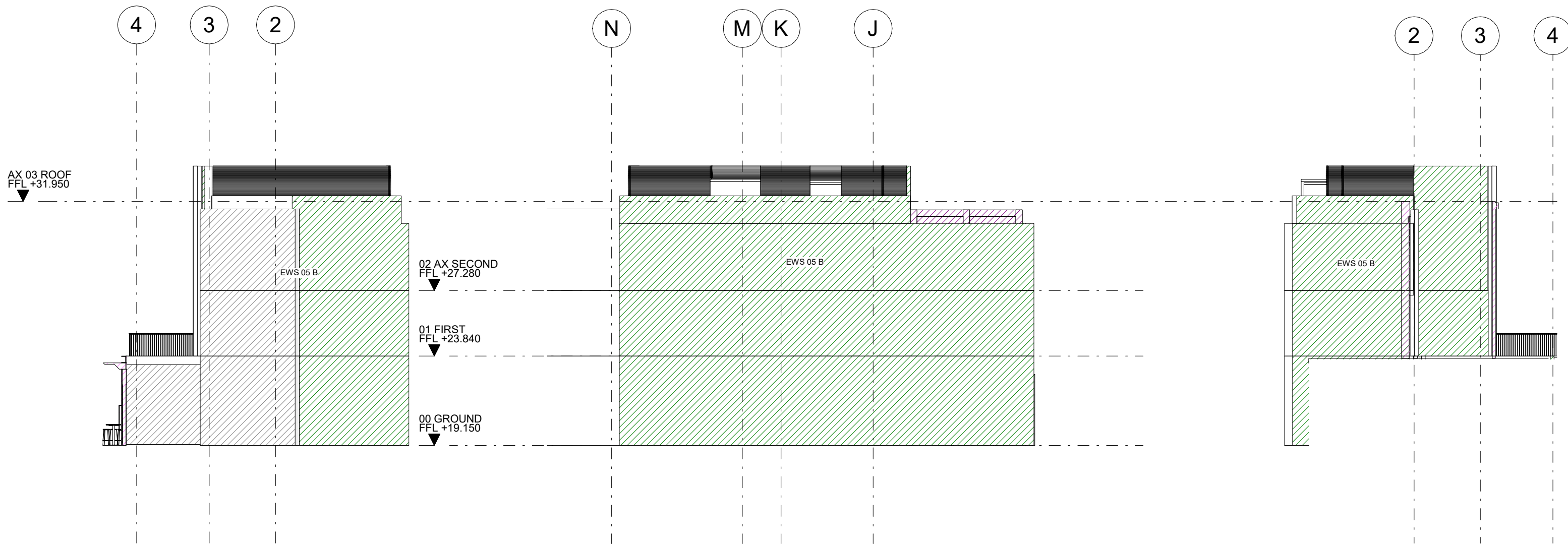




ANNEX BUILDING



01 SOUTH FACADE - ANNEX BUILDING 1:200



02 EAST FACADE - ANNEX BUILDING 1:200

03 NORTH FACADE - ANNEX BUILDING 1:200

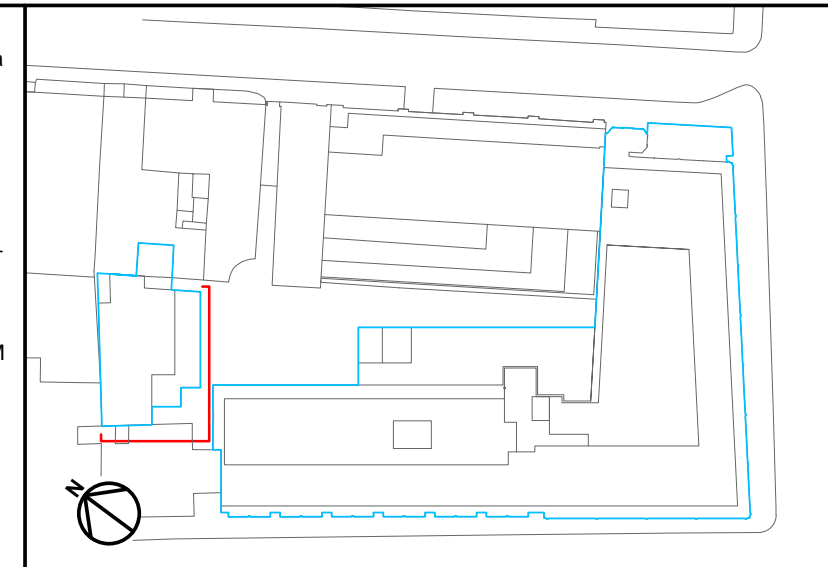
04 WEST FACADE - ANNEX BUILDING 1:200

KEY		
EXTERNAL WALL SYSTEMS		
 EWS 01 - New Portland Stone Facade EWS 01 A - Piccadilly Roof Extension EWS 01 Bi - Pavillion Facade	 EWS 03 E - Punched Hole Bay Windows EWS 03 F - Berkeley Windows in New Brick	 EWS 07 - Annex Facade EWS 08 - Passageway Feature Wall EWS 09A - Blockwork EWS 09B - External Louvers
 EWS 02 - Existing Facade EWS 02 A - Existing Portland Stone Facade EWS 02 B - Existing Brick Painted EWS 03 - New Windows & Doors EWS 03 Ai - Piccadilly Office Windows EWS 03 Ali - Piccadilly Hotel Windows EWS 03 B - Berkeley / Dover Yard Windows EWS 03 C - Bay Windows EWS 03 D - Punched Hole Windows & Doors	 EWS 05 - New Brickwork EWS 05 A - Precast Brick Facade EWS 05 B - New Brickwork Facade EWS 05 C - Party Wall EWS 05 D - Pre Cast Painted Brick Terrace EWS 05 E - Pre Cast Portland Stone EWS 06 - Shopfront / Hotel Facades EWS 06 A - Piccadilly / Dover St. Facade EWS 06 B - Berkeley & Dover Yard Facade	 BAL 110 - Glazed Balustrade Fixed to Terraces BAL 111 - Glazed Free Standing Balustrade to Terraces BAL 121 - Galvanised Steel Balustrade

REV	DATE	DESCRIPTION
T01	09/03/20	STAGE 4 ISSUE
T02	09/04/20	STAGE 4 ISSUE

CONSULTANTS	
CLIENT:	CROSTREE REAL ESTATE PARTNERS LLP
STRUCTURAL ENGINEER:	HEYNE TILLET STEEL
MECHANICAL ENGINEER:	HURLEY PALMER FLATT
PROJECT MANAGER:	JACKSON COLES
COST CONSULTANT:	CORE FIVE LLP
HOTEL ARCHITECT:	DEXTER MOREN ASSOCIATES
SUSTAINABILITY CONSULTANT:	EIGHT ASSOCIATES
PLANNING CONSULTANT:	DP9
PROJECT MANAGER:	JACKSON COLES
ACOUSTIC CONSULTANT:	HANN TUCKER

NOTE
When this drawing is issued in uncontrolled CAD format it will be accompanied by a PDF version and is issued to enable the recipient to prepare their own documents / models / drawings for which they are solely responsible. The recipient should report all drawing errors, omissions and discrepancies to the architect. All dimensions should be checked on site by the contractor and such dimensions shall be the contractor's responsibility.
Alford Hall Monaghan Morris Limited accepts no responsibility or liability for:- - any use of this drawing by parties other than the party for whom it was prepared or for purposes other than those for which it was prepared - any alterations or additions to or discrepancies arising out of changes to the background information on which the drawings are based that was current at the time of issue, and which occur to that information after it has been issued by AHMM - any loss or degradation of the information held in this drawing resulting from the translation from the original file format to any other file format or from the recipient's reading of it in any other programme or any version of the programme other than that which was used to prepare it - the accuracy of survey information provided by others or for any costs, claims, proceedings and expenses arising out of reliance on such information - any scaling from this drawing other than by the local planning authority solely for the purposes of the planning application to which it relates



ALLFORD HALL MONAGHAN MORRIS					
ARCHITECTS LTD MORELANDS, 4-23 OLD STREET LONDON EC1V 9HL TEL 020 7251 6261 FAX 020 7251 5123 WEB WWW.AHMM.CO.UK					
job title BERKELEY STREET					
drawing title / location PROPOSED SCOPING ELEVATION DOVER YARD - ANNEXE					
drawn by MH	checked BB	scale	status TENDER		
project 16014	zone	source A	classification (21)_225	drawing no. T02	revision