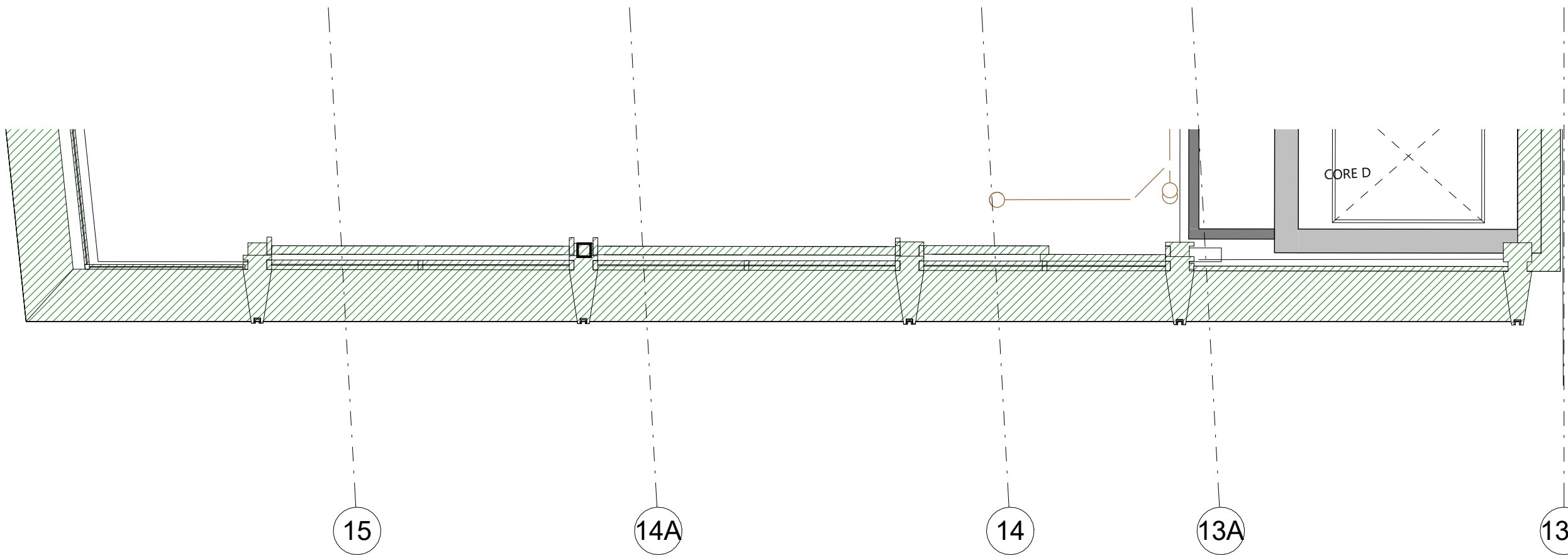
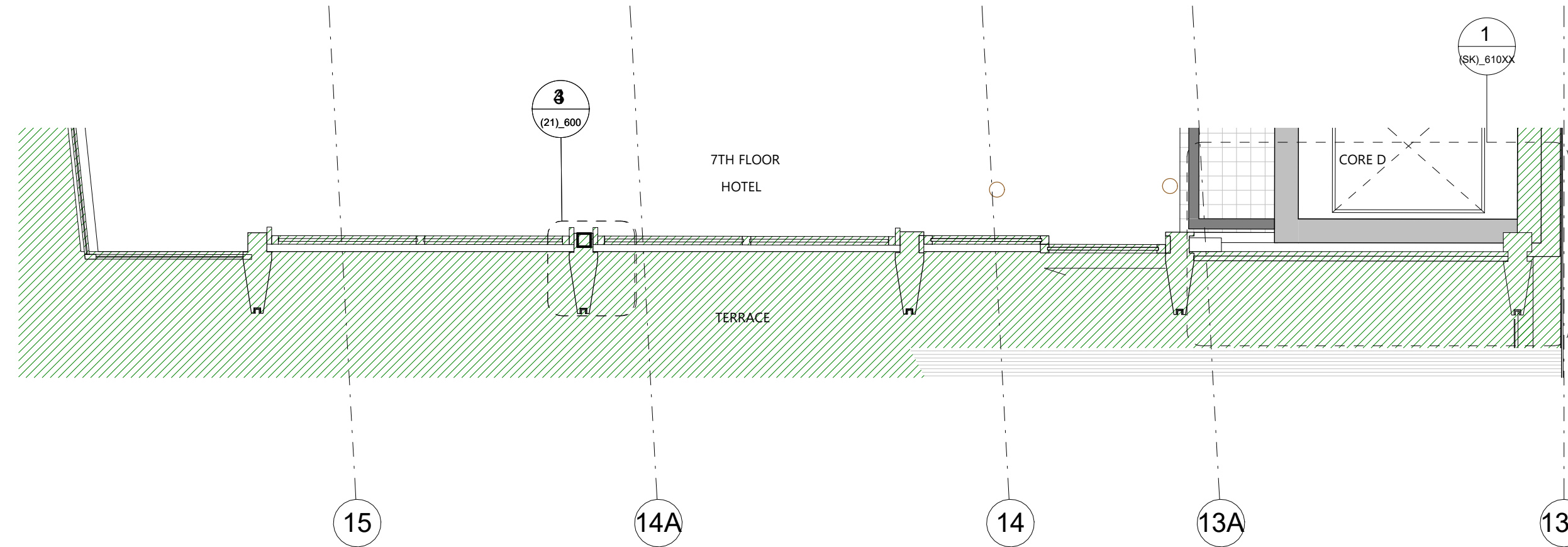


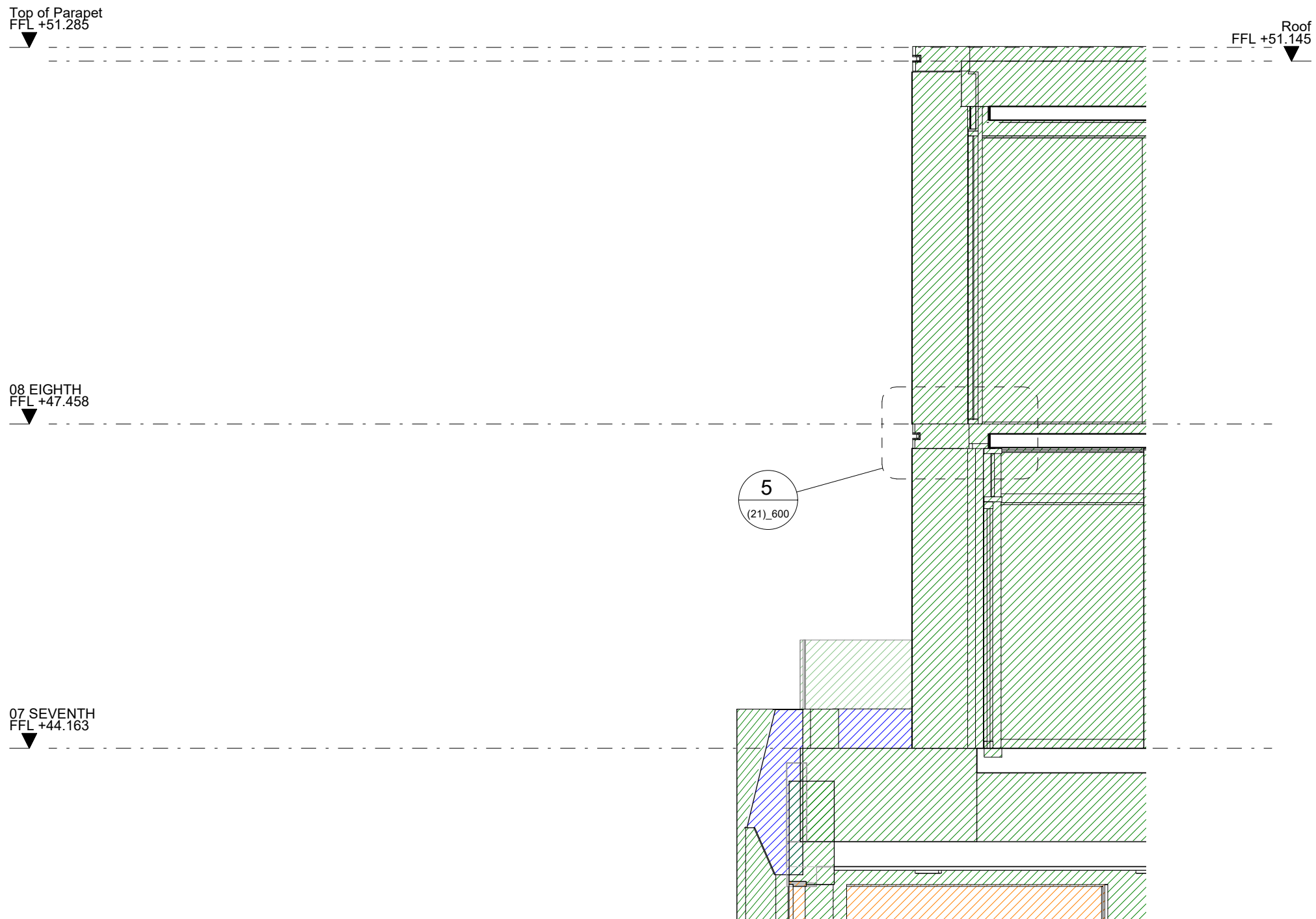
1 Dover Street Elevation Top



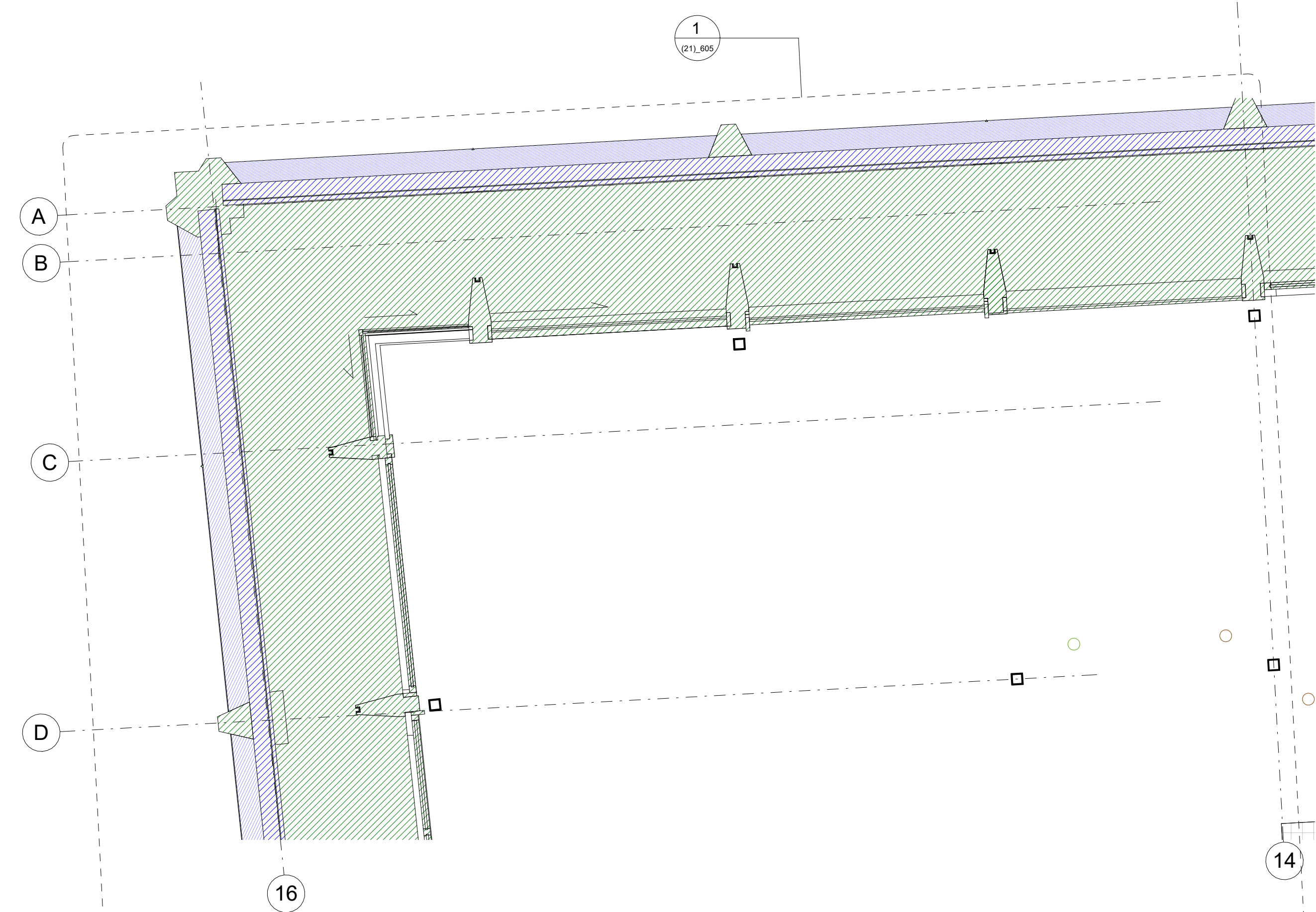
2 Dover Street Facade - Eighth Floor Plan



3 Dover Street Facade - Seventh Floor Plan



4 Dover Street Section Top



5 Dover Steet - Level 7 Penthouse Corner Openable 1 : 50

KEY

EXTERNAL WALL SYSTEMS

EXISTING BUILDING TO BE RETAINED

NEW FACADE ELEMENTS

NEW FACADE ELEMENTS IN EXISTING BUILDING

PARTY WALL

REV	DATE	DESCRIPTION
T01	09/03/20	STAGE 4 ISSUE
T02	09/04/20	STAGE 4 ISSUE

CONSULTANTS

CLIENT:	CROSSTREE REAL ESTATE PARTNERS LLP
STRUCTURAL ENGINEER:	HEYNE TILLET STEEL
MECHANICAL ENGINEER:	HURLEY PALMER FLATT
PROJECT MANAGER:	JACKSON COLES
COST CONSULTANT:	CORE FIVE LLP
HOTEL ARCHITECT:	DEXTER MOREN ASSOCIATES
SUSTAINABILITY CONSULTANT:	EIGHT ASSOCIATES
PLANNING CONSULTANT:	DP9
PROJECT MANAGER:	JACKSON COLES
ACOUSTIC CONSULTANT:	HANN TUCKER

NOTE

When this drawing is issued in uncontrolled CAD format it will be accompanied by a PDF version and is issued to enable the recipient to prepare their own documents / models / drawings for which they are solely responsible. The recipient should report all drawing errors, omissions and discrepancies to the architect. All dimensions should be checked on site by the contractor and such dimensions shall be the contractor's responsibility.

Allford Hall Monaghan Morris Limited accepts no responsibility or liability for:-

- any use of this drawing by parties other than the party for whom it was prepared or for purposes other than those for which it was prepared
- any alterations or additions to or discrepancies arising out of changes to the background information on which the drawings are based that was current at the time of issue, and which occur to that information after it has been issued by AHMM
- any loss or degradation of the information held in this drawing resulting from the translation from the original file format to any other file format or from the recipient's reading of it in any other programme or any version of the programme other than that which was used to prepare it
- the accuracy of survey information provided by others or for any costs, claims, proceedings and expenses arising out of reliance on such information
- any scaling from this drawing other than by the local planning authority solely for the purposes of the planning application to which it relates

LOCATION

ALLFORD HALL MONAGHAN MORRIS

ARCHITECTS Ltd
MORELANDS, 5-23 OLD STREET LONDON EC1V 9HL
TEL 020 7251 6261 FAX 020 7251 5123 WEB WWW.AHMM.CO.UK

job title

BERKELEY STREET

drawing title / location

Façade Bay Study 04 - Dover Street Upper Extension

drawn by	checked	scale	status
MH	BB	As indicated@A1	

project	zone	source	classification	drawing no.	revision
16014		A	(21)_304	T02	

© Allford Hall Monaghan Morris Limited