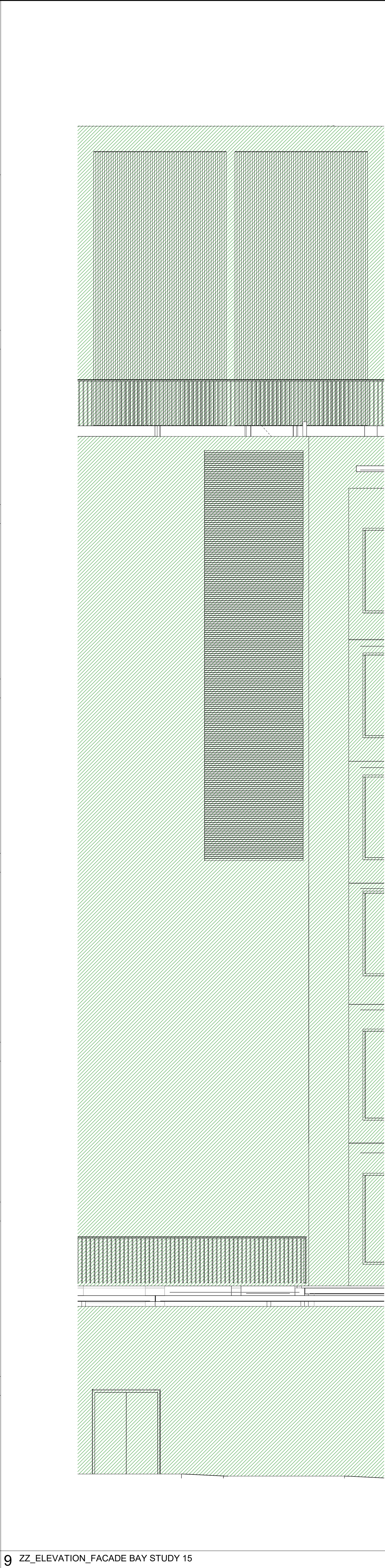


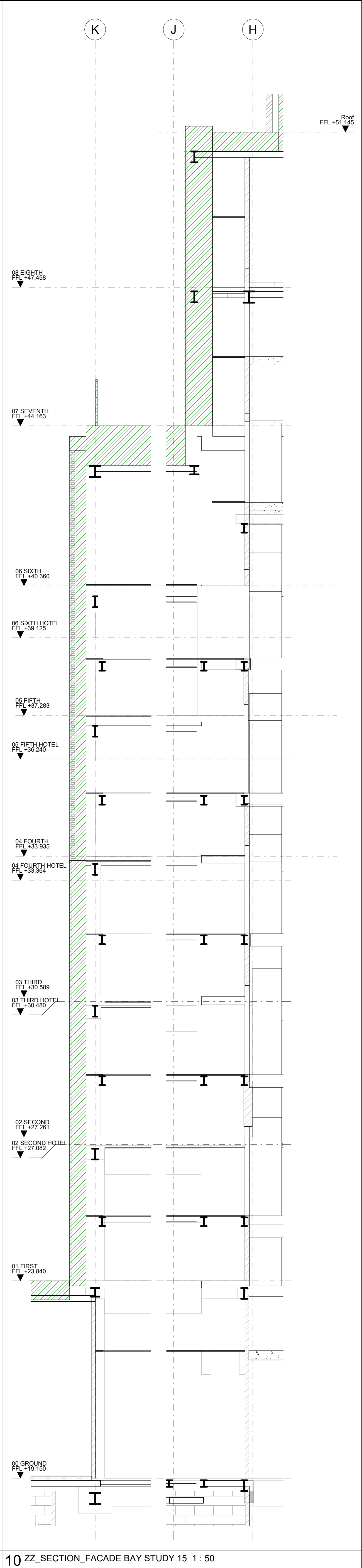
KEY	
EXTERNAL WALL SYSTEMS	
	EXISTING BUILDING TO BE RETAINED
	NEW FACADE ELEMENTS
	NEW FACADE ELEMENTS IN EXISTING BUILDING
	PARTY WALL

REV	DATE	DESCRIPTION
T01	09/03/20	STAGE 4 ISSUE



NOTE
When this drawing is issued in uncontrolled CAD format it will be accompanied by a PDF version and is issued to enable the recipient to prepare their own documents / models / drawings for which they are solely responsible. The recipient should report all drawing errors, omissions and discrepancies to the architect. All dimensions should be checked on site by the contractor and such dimensions shall be the contractor's responsibility.
Allford Hall Monaghan Morris Limited accepts no responsibility or liability for:- - any use of this drawing by parties other than the party for whom it was prepared or for purposes other than those for which it was prepared - any alterations or additions to or discrepancies arising out of changes to the background information on which the drawings are based that was current at the time of issue, and which occur to that information after it has been issued by AHMM - any loss or degradation of the information held in this drawing resulting from the translation from the original file format to any other file format or from the recipient's reading of it in any other programme or any version of the programme other than that which was used to prepare it - the accuracy of survey information provided by others or for any costs, claims, proceedings and expenses arising out of reliance on such information - any scaling from this drawing other than by the local planning authority solely for the purposes of the planning application to which it relates

LOCATION



ALLFORD HALL MONAGHAN MORRIS				
ARCHITECTS Ltd MORELANDS, 5-23 OLD STREET LONDON EC1V 9HL TEL 020 7251 5261 FAX 020 7251 5123 WEB WWW.AHMM.CO.UK				
job title BERKELEY STREET				
drawing title / location Façade Bay Study 15 - Dover Yard Bay Windows				
drawn by Author	checked BB	scale As indicated@A1	status TENDER	
project 16014	zone	source A	classification (21)_316	revision T01