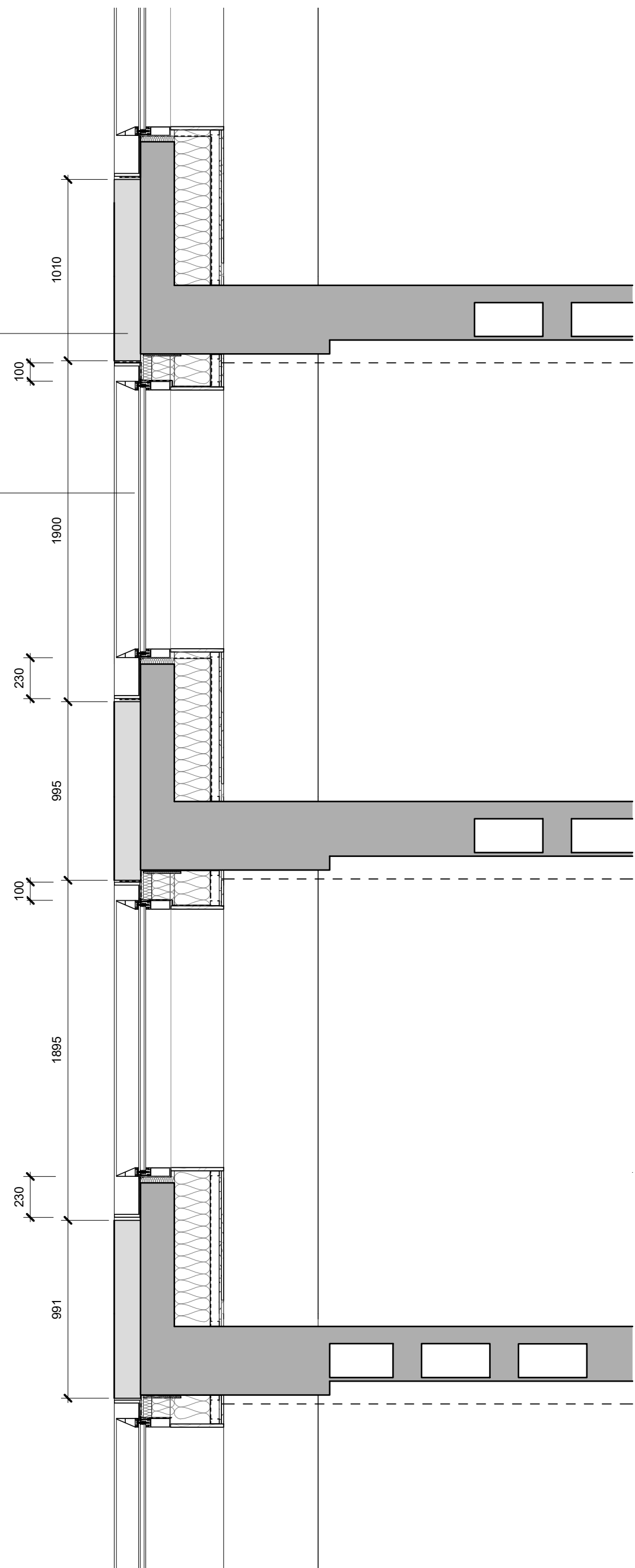


01 BERKELEY FACADE MOCK UP - ELEVATION MIDDLE 1 : 25

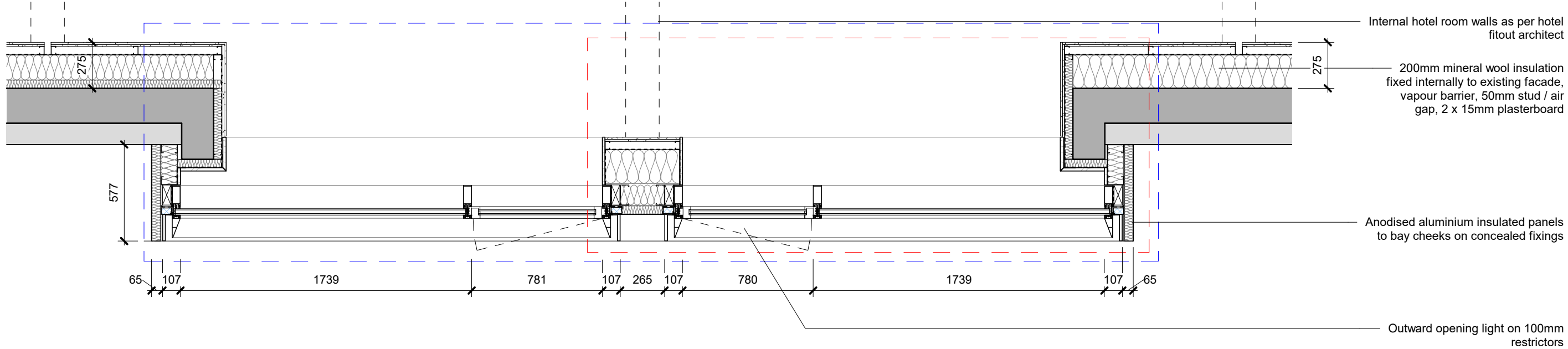
**EWS 03 B**  
**Berkeley windows**

Existing Berkeley Street brick facade  
painted dark grey (colour TBC)

Anodised (colour TBC) Schueco  
double-glazed system (low-iron  
glass) with special cover cap and  
surrounding metal trim (with  
matching opening unit on restrictors  
set within curtain wall frame)



02 BERKELEY FACADE MOCK UP - SECTION MIDDLE 1 : 25



Internal hotel room walls as per hotel  
fitout architect

200mm mineral wool insulation  
fixed internally to existing facade,  
vapour barrier, 50mm stud / air  
gap, 2 x 15mm plasterboard

Anodised aluminium insulated panels  
to bay cheeks on concealed fixings

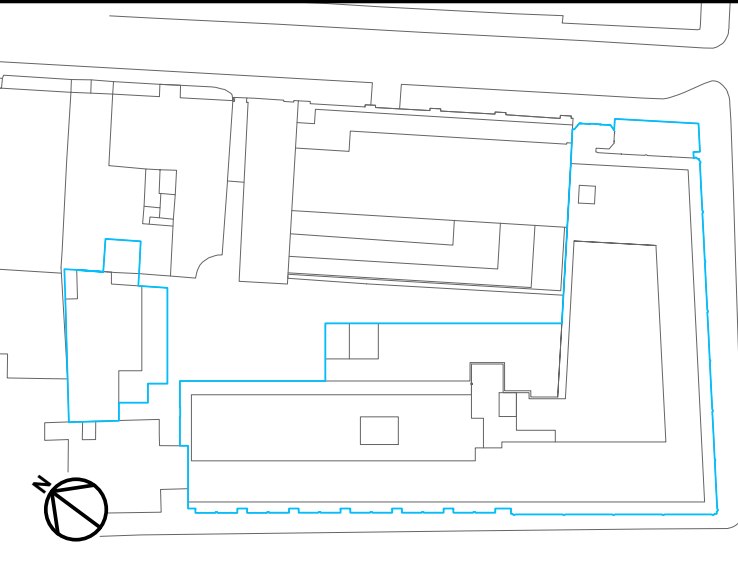
Outward opening light on 100mm  
restrictors

KEY
Price option 1
Price option 2

REV	DATE	DESCRIPTION
T01	09/03/20	STAGE 4 ISSUE
T02	13/03/20	STAGE 4 UPDATE ISSUE
T03	09/04/20	STAGE 4 ISSUE

CONSULTANTS	
CLIENT:	CROSSTREE REAL ESTATE PARTNERS LLP
STRUCTURAL ENGINEER:	HEYNE TILLET STEEL
MECHANICAL ENGINEER:	HURLEY PALMER FLATT
PROJECT MANAGER:	JACKSON COLES
COST CONSULTANT:	CORE FIVE LLP
HOTEL ARCHITECT:	DEXTER MOREN ASSOCIATES
SUSTAINABILITY CONSULTANT:	EIGHT ASSOCIATES
PLANNING CONSULTANT:	DP9
PROJECT MANAGER:	JACKSON COLES
ACOUSTIC CONSULTANT:	HANN TUCKER

NOTE
When this drawing is issued in uncontrolled CAD format it will be accompanied by a PDF version and is issued to enable the recipient to prepare their own documents / models / drawings for which they are solely responsible. The recipient should report all drawing errors, omissions and discrepancies to the architect. All dimensions should be checked on site by the contractor and such dimensions shall be the contractor's responsibility.
Alford Hall Monaghan Morris Limited accepts no responsibility or liability for:- - any use of this drawing by parties other than the party for whom it was prepared or for purposes other than those for which it was prepared - any alterations or additions to or discrepancies arising out of changes to the background information on which the drawings are based that was current at the time of issue, and which occur to that information after it has been issued by AHMM - any loss or degradation of the information held in this drawing resulting from the translation from the original file format to any other file format or from the recipient's reading of it in any other programme or any version of the programme other than that which was used to prepare it - the accuracy of survey information provided by others or for any costs, claims, proceedings and expenses arising out of reliance on such information - any scaling from this drawing other than by the local planning authority solely for the purposes of the planning application to which it relates



ALLFORD HALL MONAGHAN MORRIS					
ARCHITECTS LTD MORELANDS, 5-23 OLD STREET LONDON EC1V 9HL TEL 020 7251 6261 FAX 020 7251 5123 WEB WWW.AHMM.CO.UK					
job title BERKELEY STREET					
drawing title / location BERKELEY STREET FACADE (MIDDLE) MOCK UP - EWS 02 B & EWS 03 B					
drawn by	checked	scale	status		
Author	Checker	1 : 25@A1	TENDER		
project	zone	source	classification	drawing no.	revision
16014		A	(21)_503	T03	