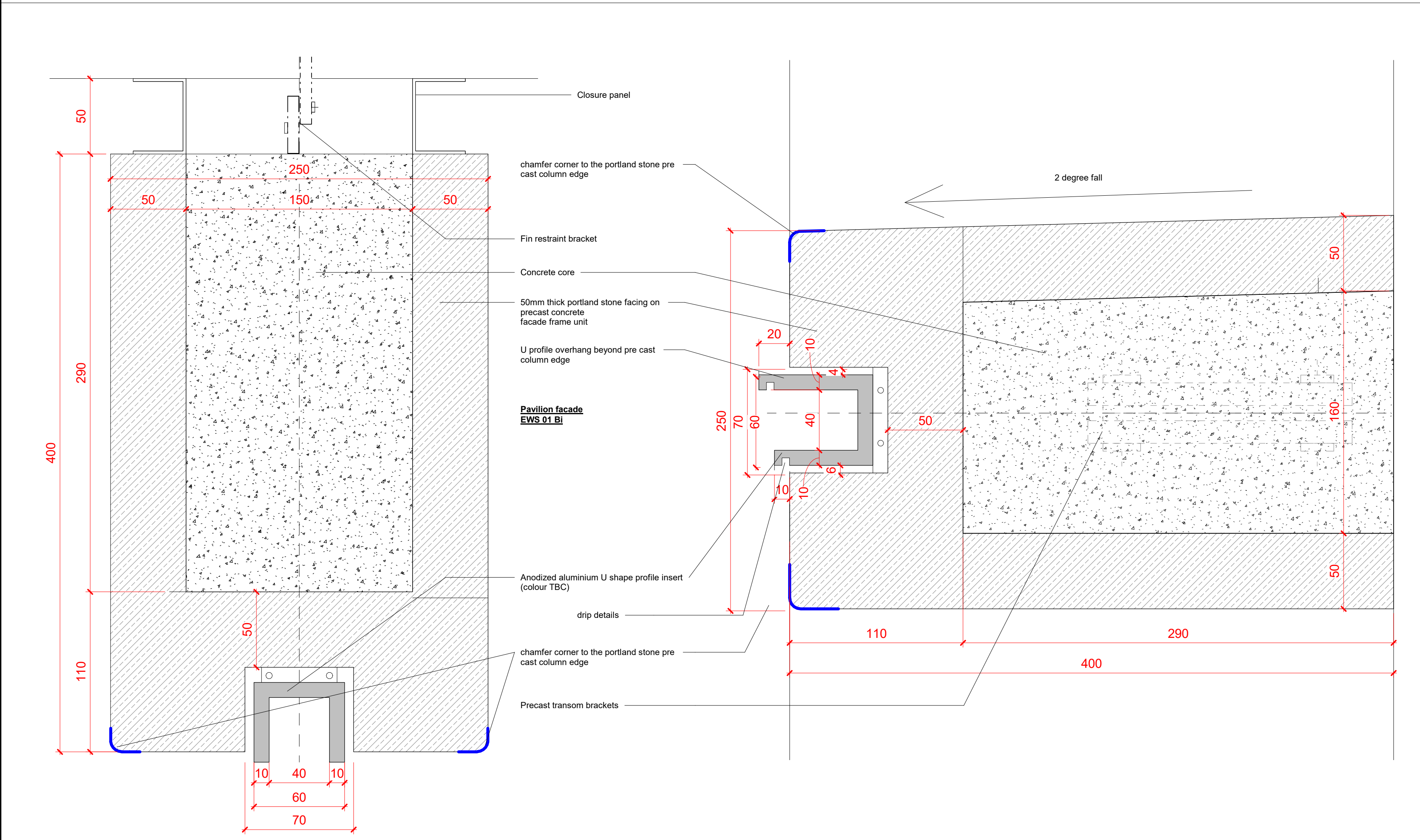
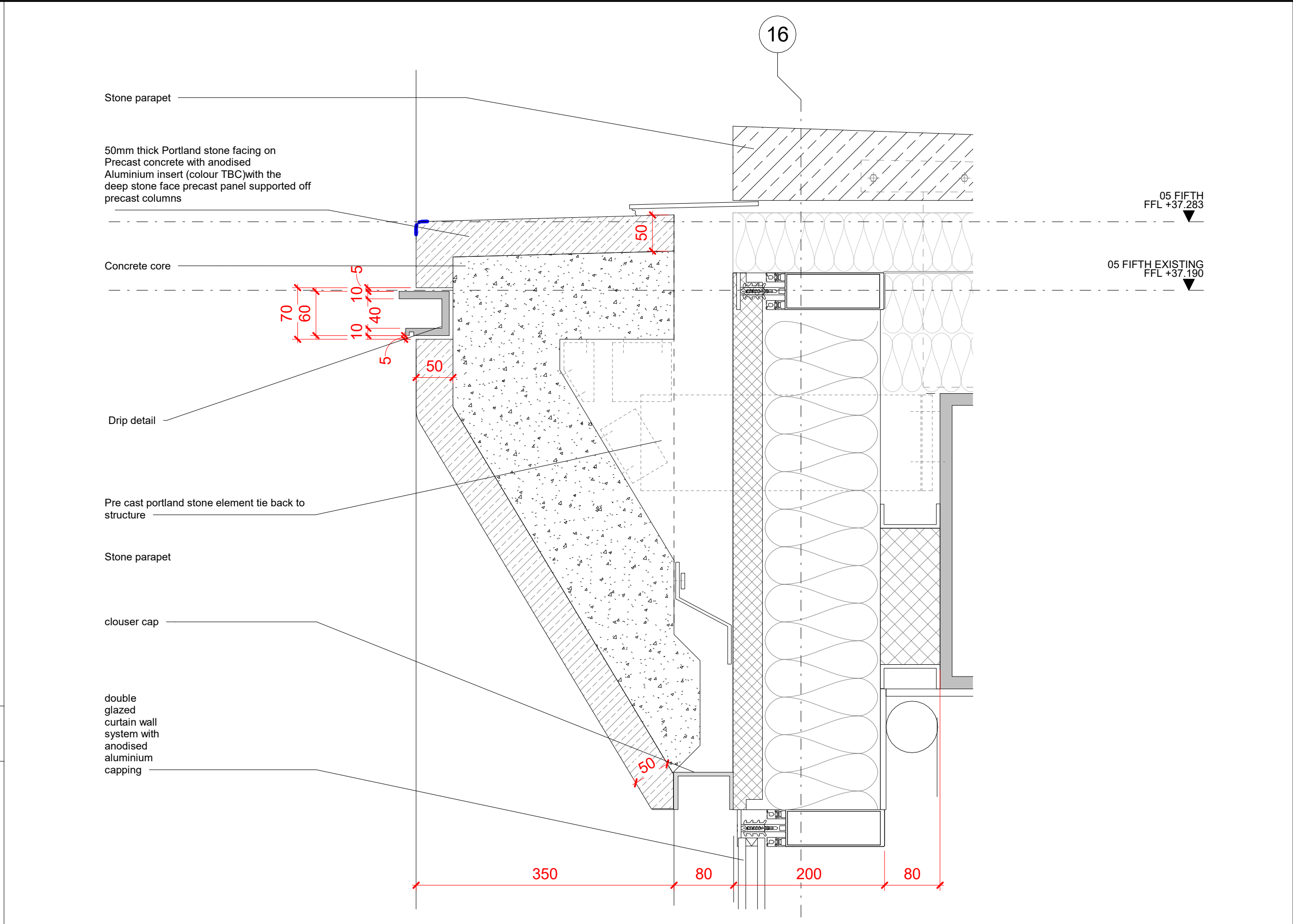


1 PAVILION FIN DETAILS EWS 01 Bi - CORNER DETAILS 1 : 10

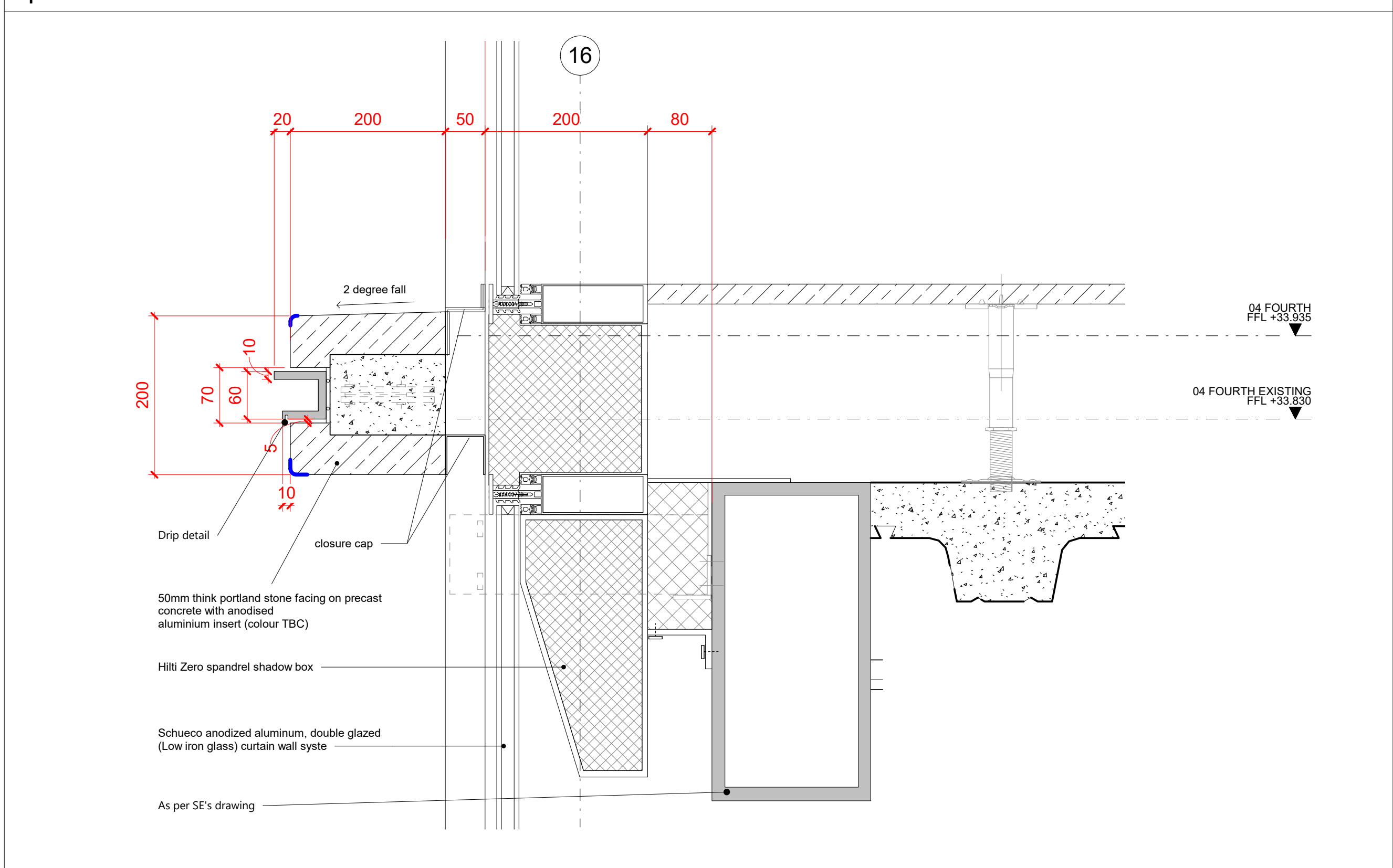


2 PAVILION FIN DETAILS EWS 01 Bi - FIN PLAN 1:2

3 PAVILION FIN DETAILS EWS 01 Bi - FIN SECTION 1 : 2



4 PAVILION FIN DETAILS EWS 01 Bi - TOP PARAPET 1 : 5



5 PAVILION FIN DETAILS EWS 01 Bi - MID FIN DETAILS 1 : 5

KEY	REV	DATE	DESCRIPTION	CONSULTANTS		NOTE		
	T01	09/03/20	STAGE 4 ISSUE	CLIENT:	CROSSTREE REAL ESTATE PARTNERS LLP	When this drawing is issued in uncontrolled CAD format it will be accompanied by a PDF version and is issued to enable the recipient to prepare their own documents / models / drawings for which they are solely responsible.		
				STRUCTURAL ENGINEER:	HEYNE TILLET STEEL	The recipient should report all drawing errors, omissions and discrepancies to the architect. All dimensions should be checked on site by the contractor and such dimensions shall be the contractor's responsibility.		
				MECHANICAL ENGINEER:	HURLEY PALMER FLATT			
				PROJECT MANAGER:	JACKSON COLES			
				COST CONSULTANT:	CORE FIVE LLP	Allford Hall Monaghan Morris Limited accepts no responsibility or liability for:-		
				HOTEL ARCHITECT:	DEXTER MOREN ASSOCIATES	- any use of this drawing by parties other than the party for whom it was prepared or for purposes other than those for which it was prepared		
				SUSTAINABILITY CONSULTANT:	EIGHT ASSOCIATES	- any alterations or additions to or discrepancies arising out of changes to the background information on which the drawings are based that was current at the time of issue, and which occur to that information after it has been issued by AHMM		
				PLANNING CONSULTANT:	DP9	- any loss or degradation of the information held in this drawing resulting from the translation from the original file format to any other file format or from the recipient's reading of it in any other programme or any version of the programme other than that which was used to prepare it		
				PROJECT MANAGER:	JACKSON COLES	- the accuracy of survey information provided by others or for any costs, claims, proceedings and expenses arising out of reliance on such information		
			ACOUSTIC CONSULTANT:	HANN TUCKER	- any scaling from this drawing other than by the local planning authority solely for the purposes of the planning application to which it relates			
							ALLFORD HALL MONAGHAN MORRIS	
							ARCHITECTS Ltd MORELANDS, 5-23 OLD STREET LONDON EC1V 9HL TEL 020 7251 5261 FAX 020 7251 5123 WEB WWW.AHMM.CO.UK	
job title							BERKELEY STREET	
drawing title / location							PAVILION FACADE EDGE FIN DETAILS - EWS01 Bi	
drawn by	checked	scale				status		
Author	BB	As indicated@A1			TENDER			
project	zone	source	classification	drawing no.	revision			
16014		A	(21)_601	T01				