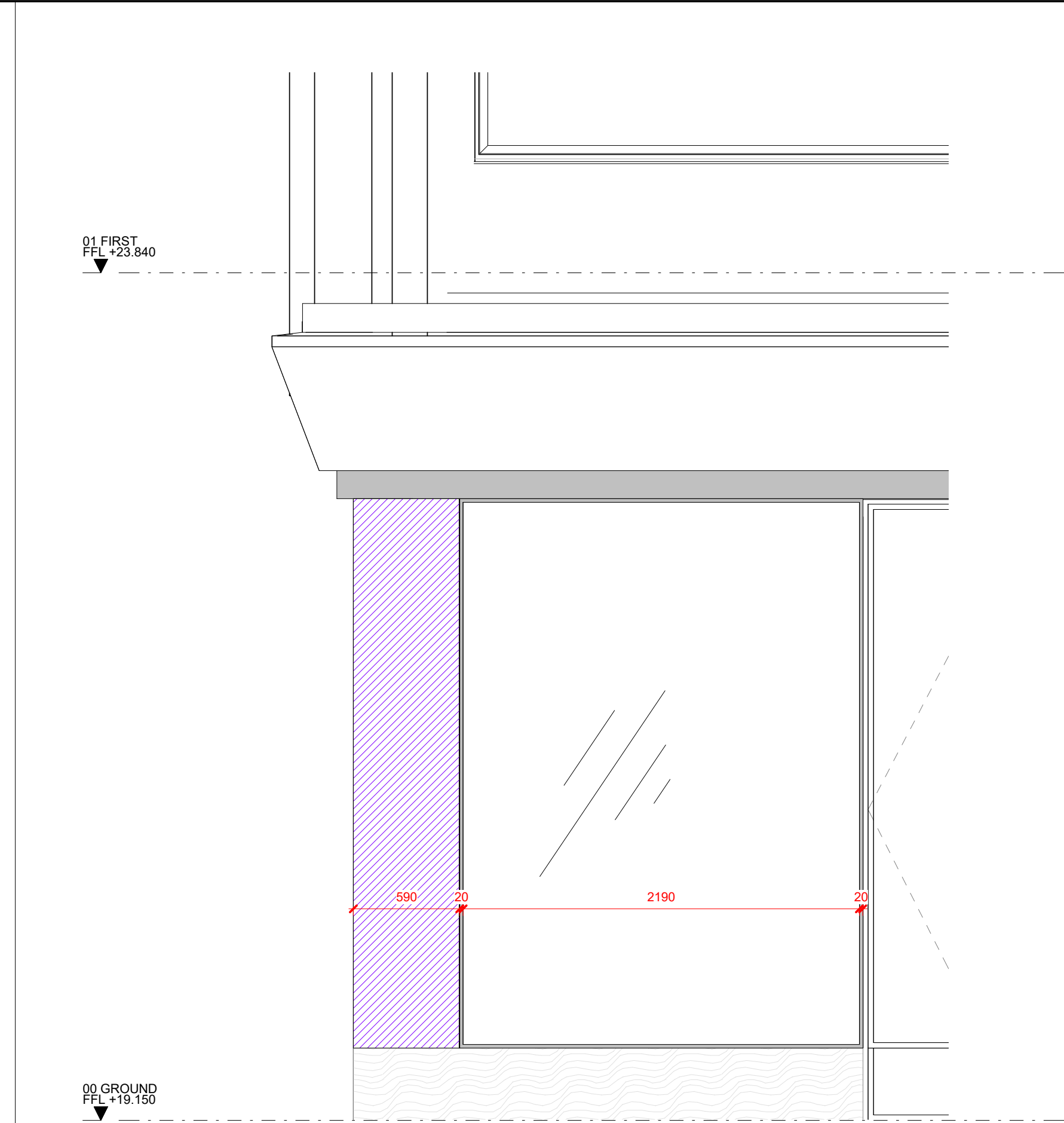
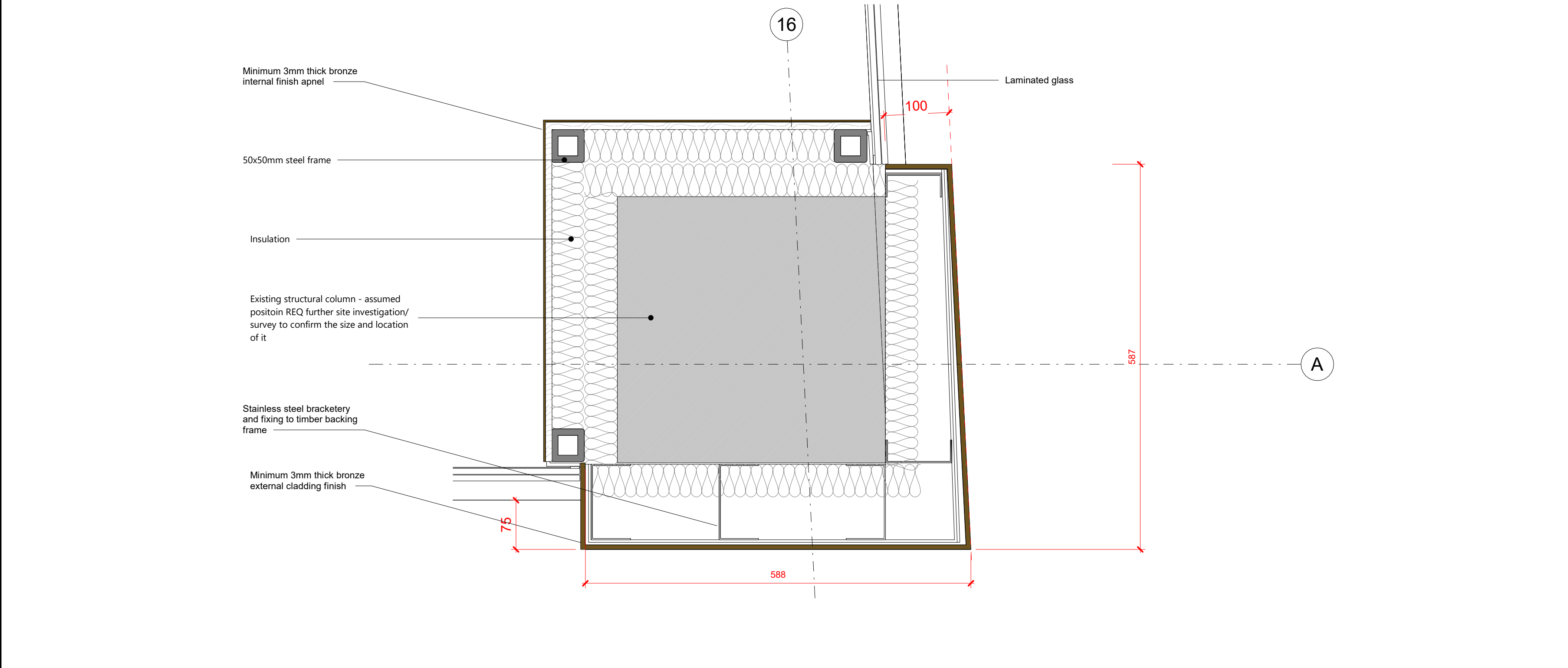


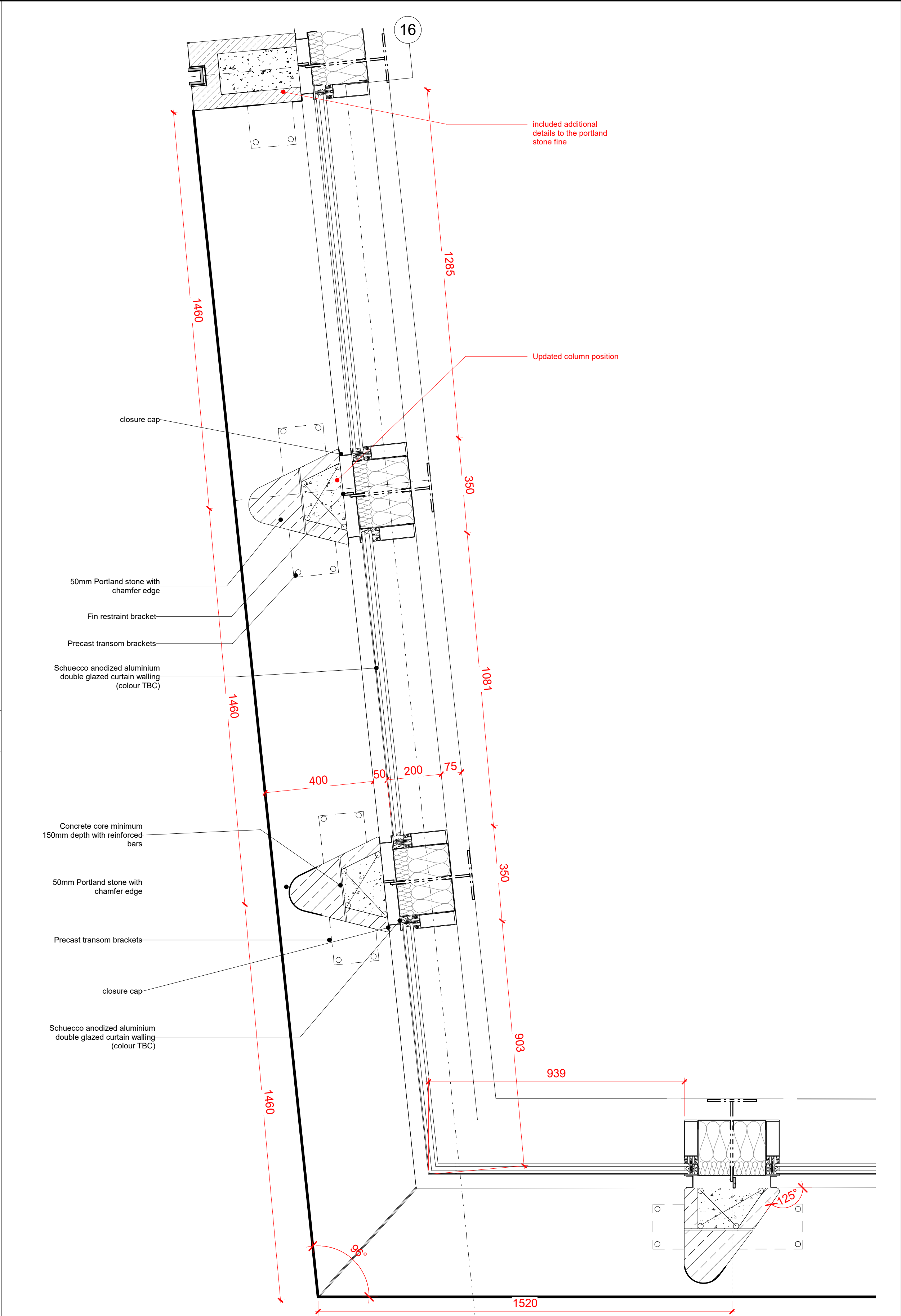
PICCADILLY RETAIL SHOPFRONT CORNER ELEVATION A 1 : 25



PICCADILLY RETAIL SHOPFRONT CORNER ELEVATION B - EWS 06 A 1 : 25



PICCADILLY RETAIL SHOPFRONT CORNER DETAILS - EWS 06 A 1 : 5



4 Pavilion Corner Facade - Fourth Floor Plan - Dover Street 1 : 10

REV	DATE	DESCRIPTION
T01	09/03/20	STAGE 4 ISSUE
T02	13/03/20	STAGE 4 UPDATE ISSUE
T03	09/04/20	STAGE 4 ISSUE

CONSULTANTS	
CLIENT:	CROSTREE REAL ESTATE PARTNERS LLP
STRUCTURAL ENGINEER:	HEYNE TILLET STIEL
MECHANICAL ENGINEER:	HURLEY PALMER FLATT
PROJECT MANAGER:	JACKSON COLES
COST CONSULTANT:	CORE FIVE LLP
HOTEL ARCHITECT:	DEXTER MOREN ASSOCIATES
SUSTAINABILITY CONSULTANT:	EIGHT ASSOCIATES
PLANNING CONSULTANT:	DPS
PROJECT MANAGER:	JACKSON COLES
ACOUSTIC CONSULTANT:	HANN TUCKER

NOTE	When this drawing is issued in uncontrolled CAD format it will be accompanied by a PDF version and is issued to enable the recipient to prepare their own documents / models / drawings for which they are solely responsible. The recipient should report all drawing errors, omissions and discrepancies to the architect. All dimensions should be checked on site by the contractor and such dimensions shall be the contractor's responsibility.
NOTE	Alford Hall Monaghan Morris Limited accepts no responsibility or liability for:- - any use of this drawing by parties other than the party for whom it was prepared or for purposes other than those for which it was prepared - any alterations or additions to or discrepancies arising out of changes to the background information on which the drawings are based that was current at the time of issue, and which occur to that information after it has been issued by AHMM - any loss or degradation of the information held in this drawing resulting from the translation from the original file format to any other file format or from the recipient's reading of it in any other programme or any version of the programme other than that which was used to prepare it - the accuracy of survey information provided by others or for any costs, claims, proceedings and expenses arising out of reliance on such information - any scaling from this drawing other than by the local planning authority solely for the purposes of the planning application to which it relates

drawn by	01-88	scale	As indicated	status	TENDER
Author	BB	As indicated	@A1		
project	16014	zone	A	classification	(21)_604
				drawing no.	T03
				revision	

NOTE	When this drawing is issued in uncontrolled CAD format it will be accompanied by a PDF version and is issued to enable the recipient to prepare their own documents / models / drawings for which they are solely responsible. The recipient should report all drawing errors, omissions and discrepancies to the architect. All dimensions should be checked on site by the contractor and such dimensions shall be the contractor's responsibility.
NOTE	Alford Hall Monaghan Morris Limited accepts no responsibility or liability for:- - any use of this drawing by parties other than the party for whom it was prepared or for purposes other than those for which it was prepared - any alterations or additions to or discrepancies arising out of changes to the background information on which the drawings are based that was current at the time of issue, and which occur to that information after it has been issued by AHMM - any loss or degradation of the information held in this drawing resulting from the translation from the original file format to any other file format or from the recipient's reading of it in any other programme or any version of the programme other than that which was used to prepare it - the accuracy of survey information provided by others or for any costs, claims, proceedings and expenses arising out of reliance on such information - any scaling from this drawing other than by the local planning authority solely for the purposes of the planning application to which it relates

ALLFORD HALL MONAGHAN MORRIS					
ARCHITECTS LTD MORELANDS, 5-23 OLD STREET LONDON EC1V 9HL TEL 020 7251 5261 FAX 020 7251 5123 WEB WWW.AHMM.CO.UK					
job title BERKELEY STREET					
drawing title / location PICCADILLY RETAIL/PAVILION CORNER DETAILS - EWS 06 A & EWS					
drawn by Author BB		scale As indicated@A1		status TENDER	
project 16014		zone A	source (21)_604	drawing no. T03	revision