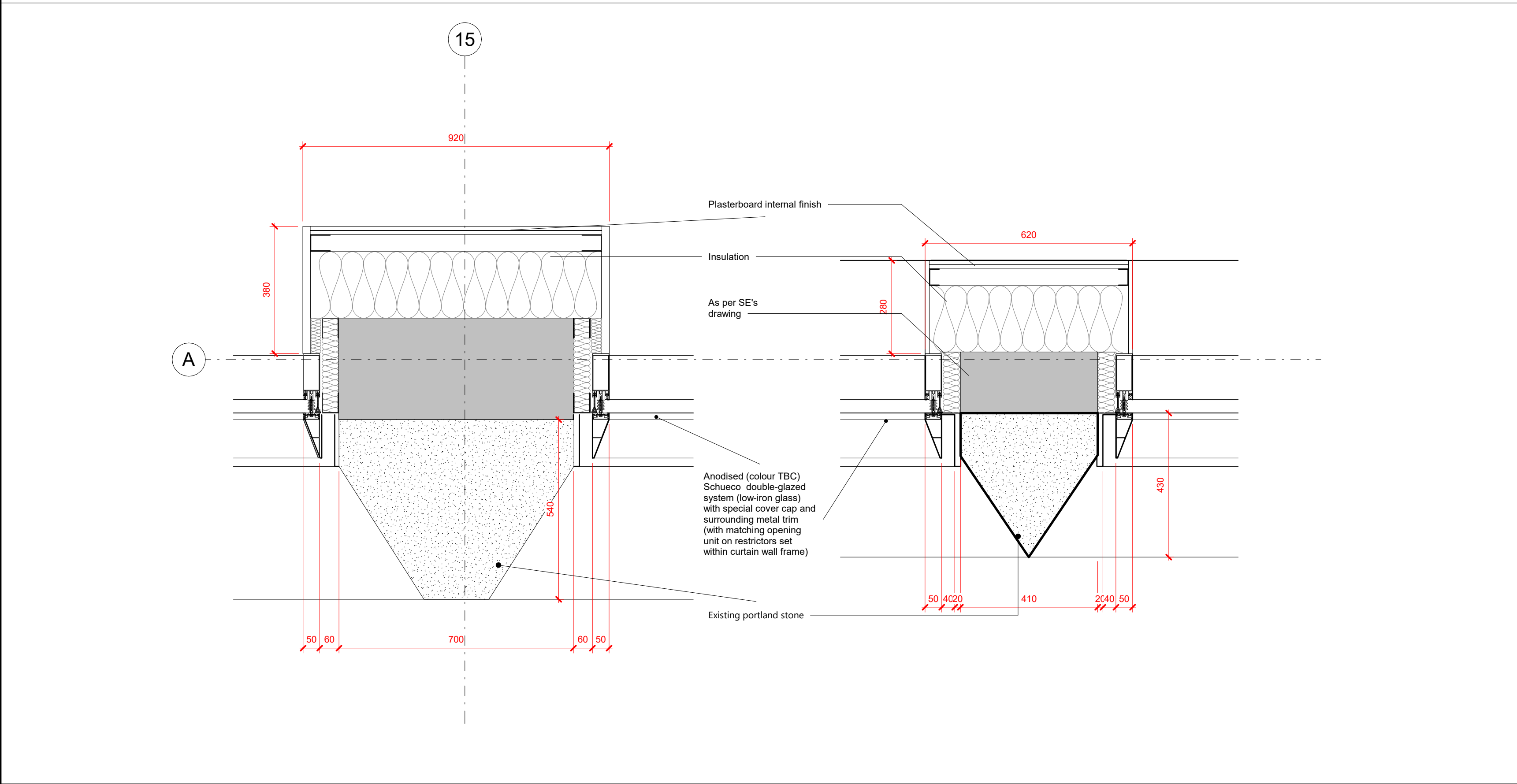
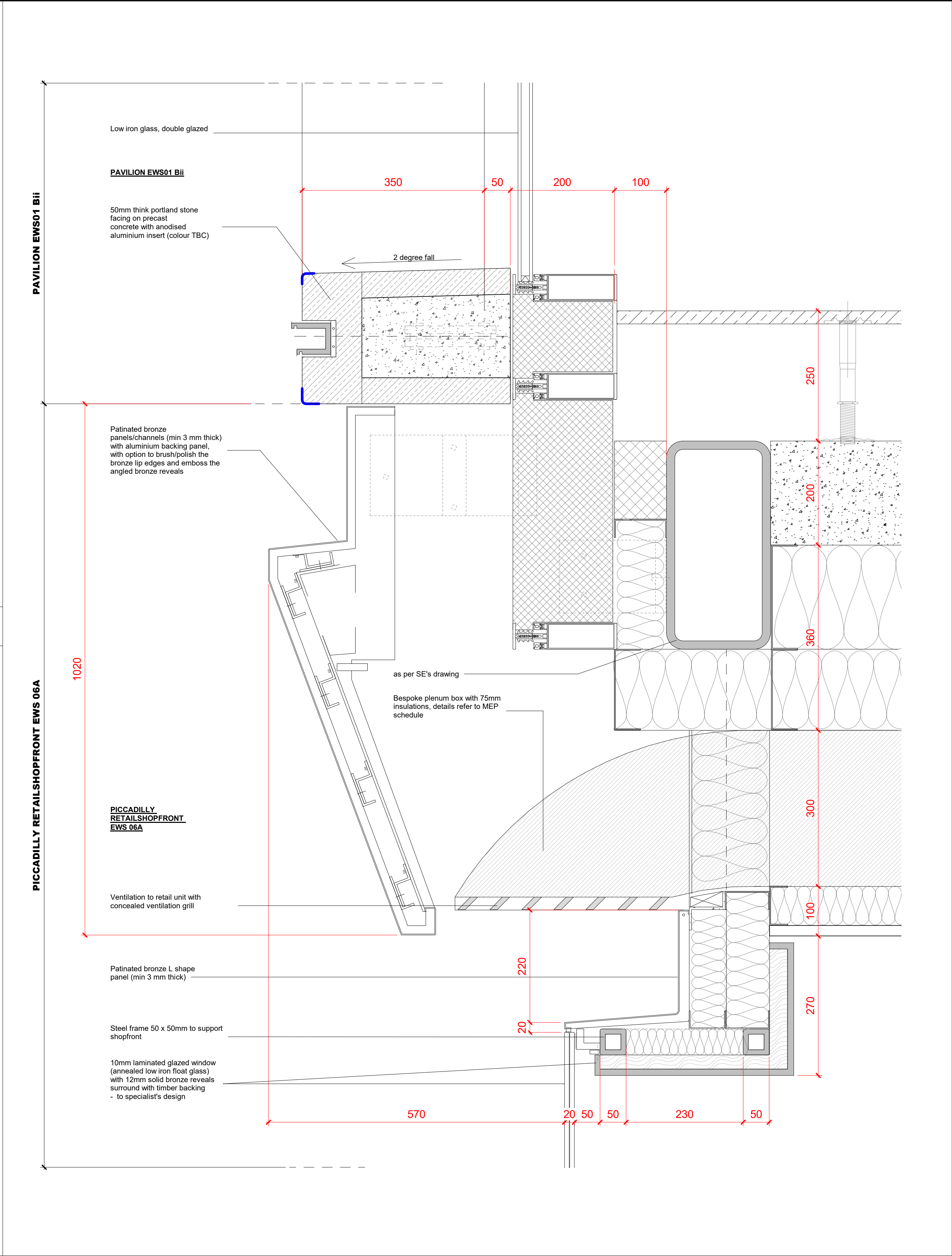


1 PICCADILLY RETAIL SHOPFRONT COLUMN DETAILS - EWS
06 A 1 : 10



2 PICCADILLY FACADE PLAN - EWS 03 Ai & EWS 03 Aii 1 : 10



3 PICCADILLY RETAIL & PAVILION INTERFACE DETAILS EWS
06 A & EWS 01 Bi 1 : 5

KEY					REV	DATE	DESCRIPTION	CONSULTANTS		NOTE		ALLFORD HALL MONAGHAN MORRIS				
					T01	09/03/20	STAGE 4 ISSUE	CLIENT:	CROSSTREE REAL ESTATE PARTNERS LLP	When this drawing is issued in uncontrolled CAD format it will be accompanied by a PDF version and is issued to enable the recipient to prepare their own documents / models / drawings for which they are solely responsible.		ARCHITECTS Ltd MORELANDS, 5-23 OLD STREET LONDON EC1V 9HL TEL 020 7251 5261 FAX 020 7251 5123 WEB WWW.AHMM.CO.UK				
								STRUCTURAL ENGINEER:	HEYNE TILLET STEEL	The recipient should report all drawing errors, omissions and discrepancies to the architect. All dimensions should be checked on site by the contractor and such dimensions shall be the contractor's responsibility.		job title				
								MECHANICAL ENGINEER:	HURLEY PALMER FLATT			BERKELEY STREET				
								PROJECT MANAGER:	JACKSON COLES			drawing title / location				
								COST CONSULTANT:	CORE FIVE LLP	Alford Hall Monaghan Morris Limited accepts no responsibility or liability for:-		PICCADILLY & DOVER ST FACADE -				
								HOTEL ARCHITECT:	DEXTER MOREN ASSOCIATES	- any use of this drawing by parties other than the party for whom it was prepared or for purposes other than those for which it was prepared		EWS 06 A, EWS 03 Ai & EWS 03 Aii				
								SUSTAINABILITY CONSULTANT:	EIGHT ASSOCIATES	- any alterations or additions to or discrepancies arising out of changes to the background information on which the drawings are based that was current at the time of issue, and which occur to that information after it has been issued by AHMM						
								PLANNING CONSULTANT:	DP9	- any loss or degradation of the information held in this drawing resulting from the translation from the original file format to any other file format or from the recipient's reading of it in any other programme or any version of the programme other than that which was used to prepare it						
								PROJECT MANAGER:	JACKSON COLES	- the accuracy of survey information provided by others or for any costs, claims, proceedings and expenses arising out of reliance on such information						
								ACOUSTIC CONSULTANT:	HANN TUCKER	- any scaling from this drawing other than by the local planning authority solely for the purposes of the planning application to which it relates						