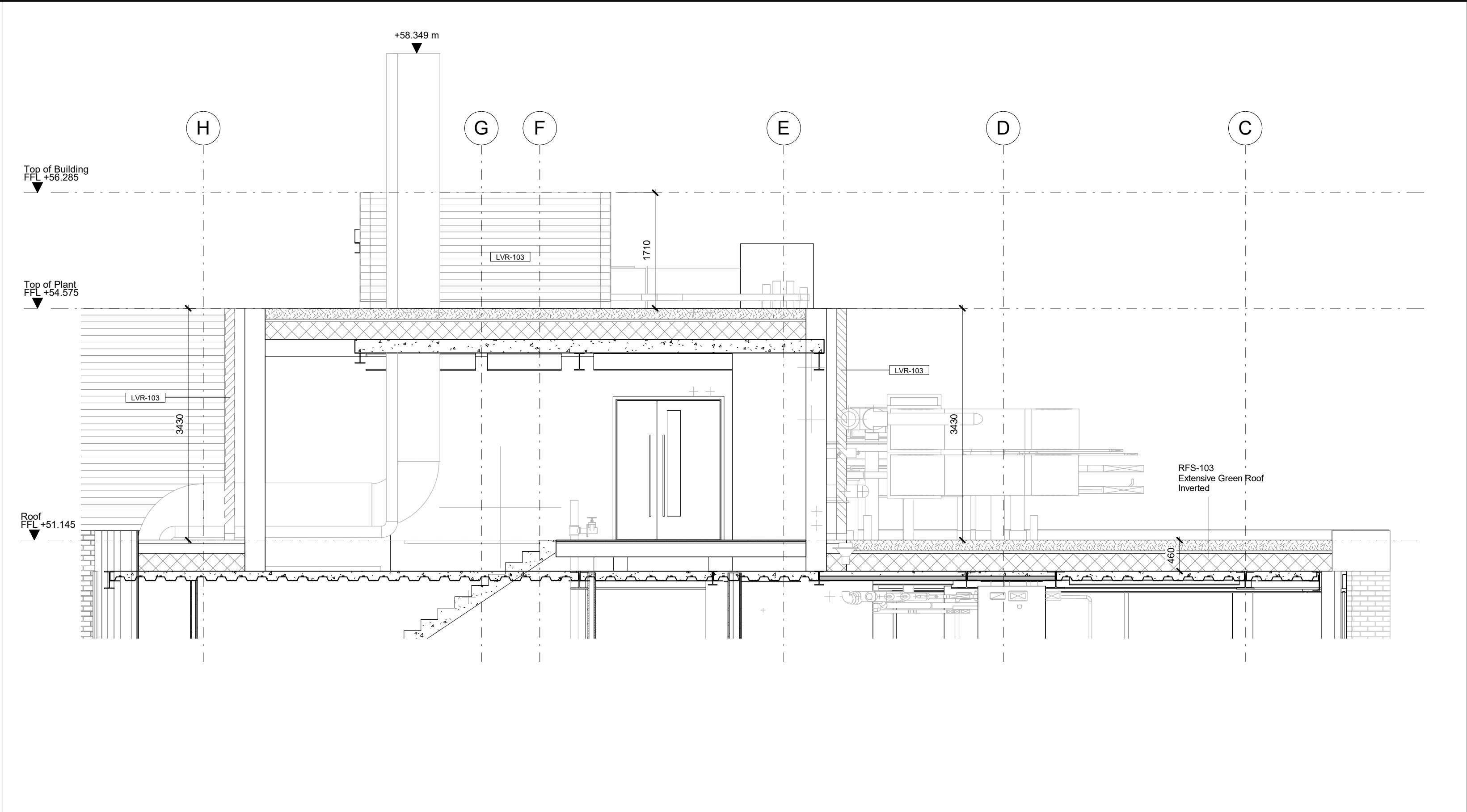
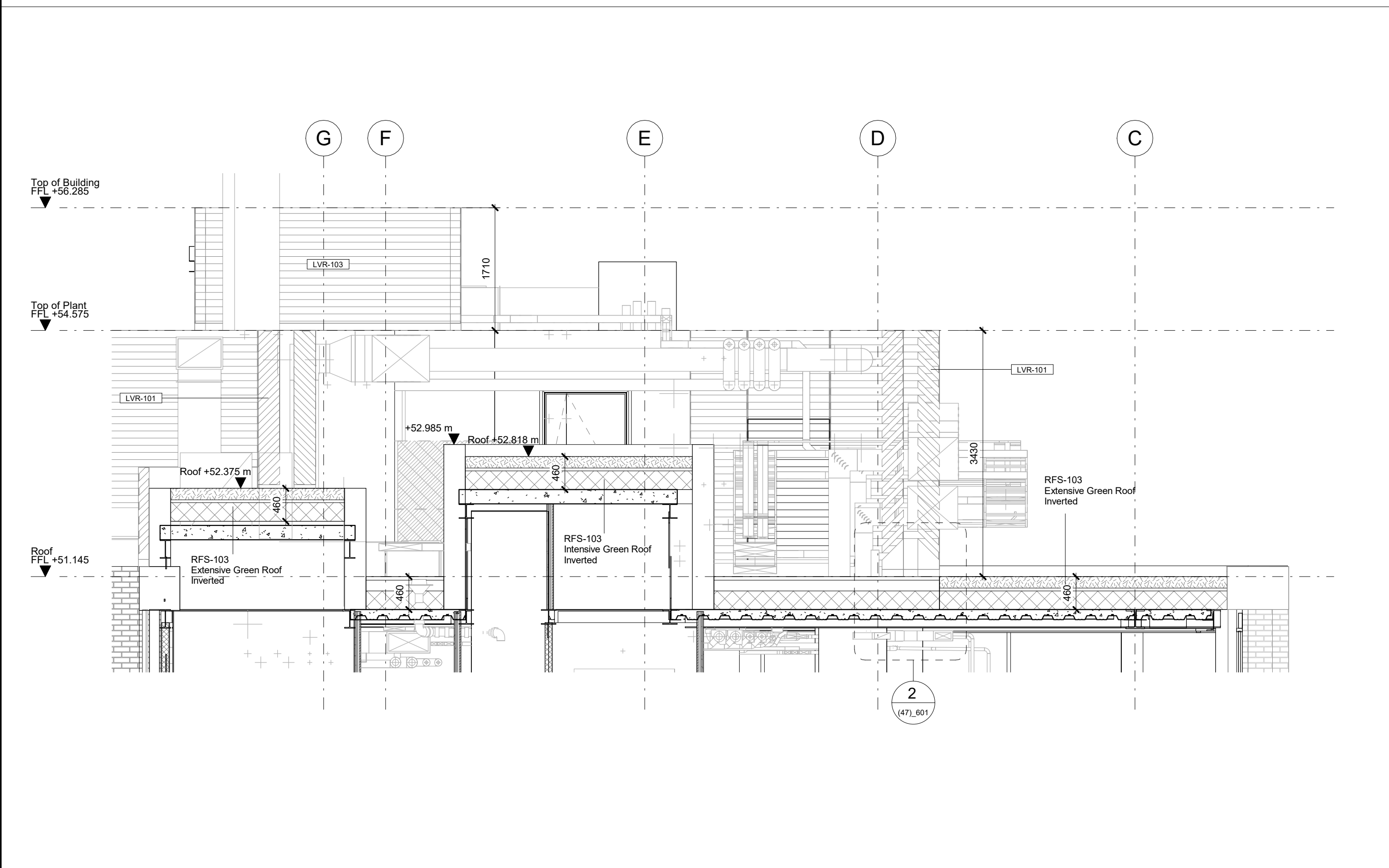


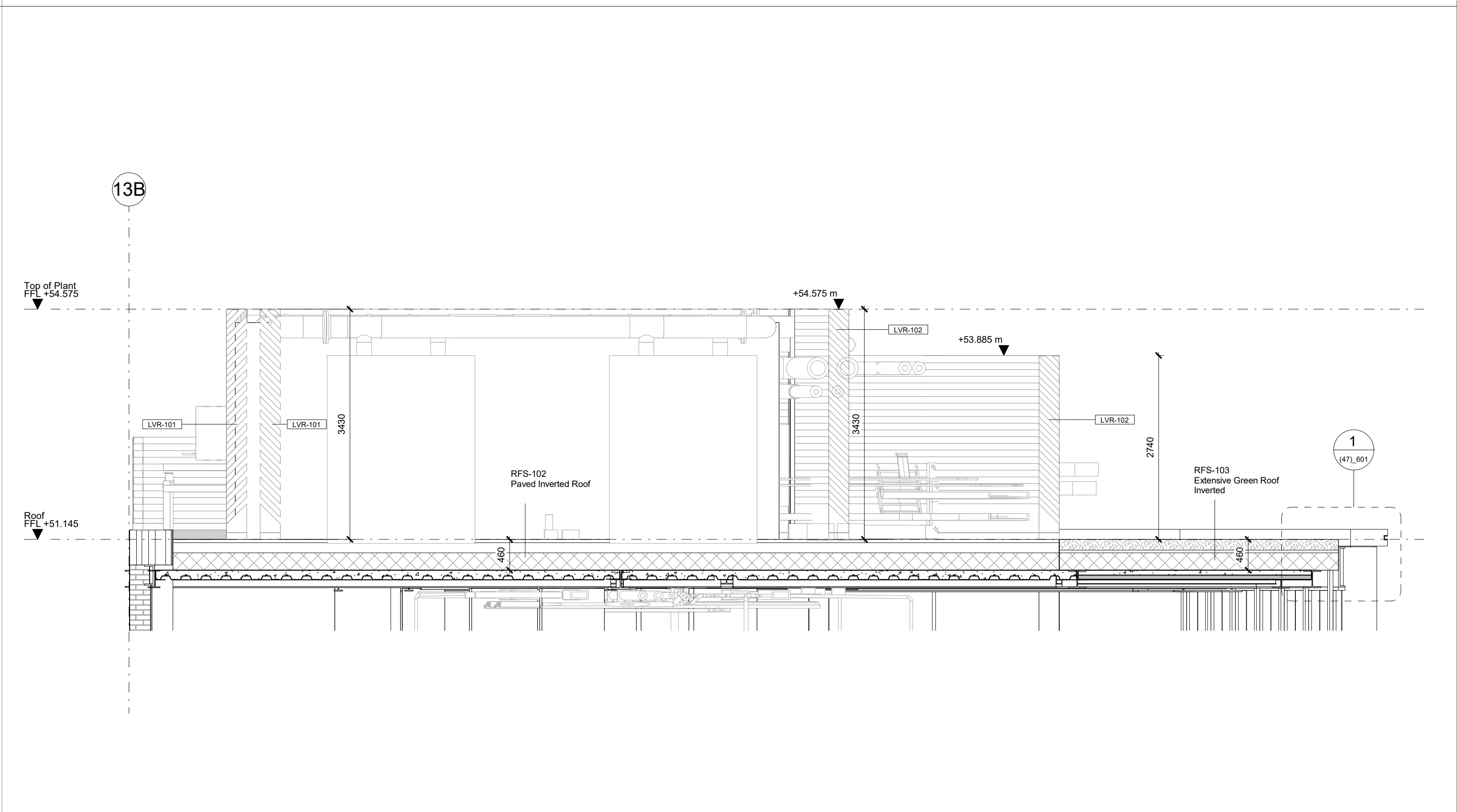
1 SCP 01 050 - Level 9 Roof Section



3 SCP 03 050 - Level 9 Roof Section



2 SCP 02 050 - Level 9 Roof Section Core B



4 SCP 04 050 - Level 9 Roof Section

KEY	REV		DATE	DESCRIPTION	CONSULTANTS		NOTE		<div>ALLFORD HALL MONAGHAN MORRIS</div> <div>ARCHITECTS Ltd</div> <div>MORELANDS, 5-23 OLD STREET LONDON EC1V 9HL</div> <div>TEL 020 7251 5261 FAX 020 7251 5123 WEB WWW.AHMM.CO.UK</div> <div>job title</div> <div>BERKELEY STREET</div> <div>drawing title / location</div> <div>ROOF &amp; TERRACES - SECTIONS 4</div> <div>drawn by checked scale status</div> <div>PK BB 1 : 50@A1 TENDER</div> <div>project zone source classification drawing no. revision</div> <div>16014 A (47)_304 T01</div>
	T01		09/03/20	STAGE 4 ISSUE	CLIENT:	CROSSTREE REAL ESTATE PARTNERS LLP	When this drawing is issued in uncontrolled CAD format it will be accompanied by a PDF version and is issued to enable the recipient to prepare their own documents / models / drawings for which they are solely responsible.		
				STRUCTURAL ENGINEER:	HEYNE TILLET STEEL	The recipient should report all drawing errors, omissions and discrepancies to the architect. All dimensions should be checked on site by the contractor and such dimensions shall be the contractor's responsibility.			
				MECHANICAL ENGINEER:	HURLEY PALMER FLATT				
				PROJECT MANAGER:	JACKSON COLES				
				COST CONSULTANT:	CORE FIVE LLP	Allford Hall Monaghan Morris Limited accepts no responsibility or liability for:-			
				HOTEL ARCHITECT:	DEXTER MOREN ASSOCIATES	- any use of this drawing by parties other than the party for whom it was prepared or for purposes other than those for which it was prepared			
				SUSTAINABILITY CONSULTANT:	EIGHT ASSOCIATES	- any alterations or additions to or discrepancies arising out of changes to the background information on which the drawings are based that was current at the time of issue, and which occur to that information after it has been issued by AHMM			
				PLANNING CONSULTANT:	DP9	- any loss or degradation of the information held in this drawing resulting from the translation from the original file format to any other file format or from the recipient's reading of it in any other programme or any version of the programme other than that which was used to prepare it			
				PROJECT MANAGER:	JACKSON COLES	- the accuracy of survey information provided by others or for any costs, claims, proceedings and expenses arising out of reliance on such information			
			ACOUSTIC CONSULTANT:	HANN TUCKER	- any scaling from this drawing other than by the local planning authority solely for the purposes of the planning application to which it relates				