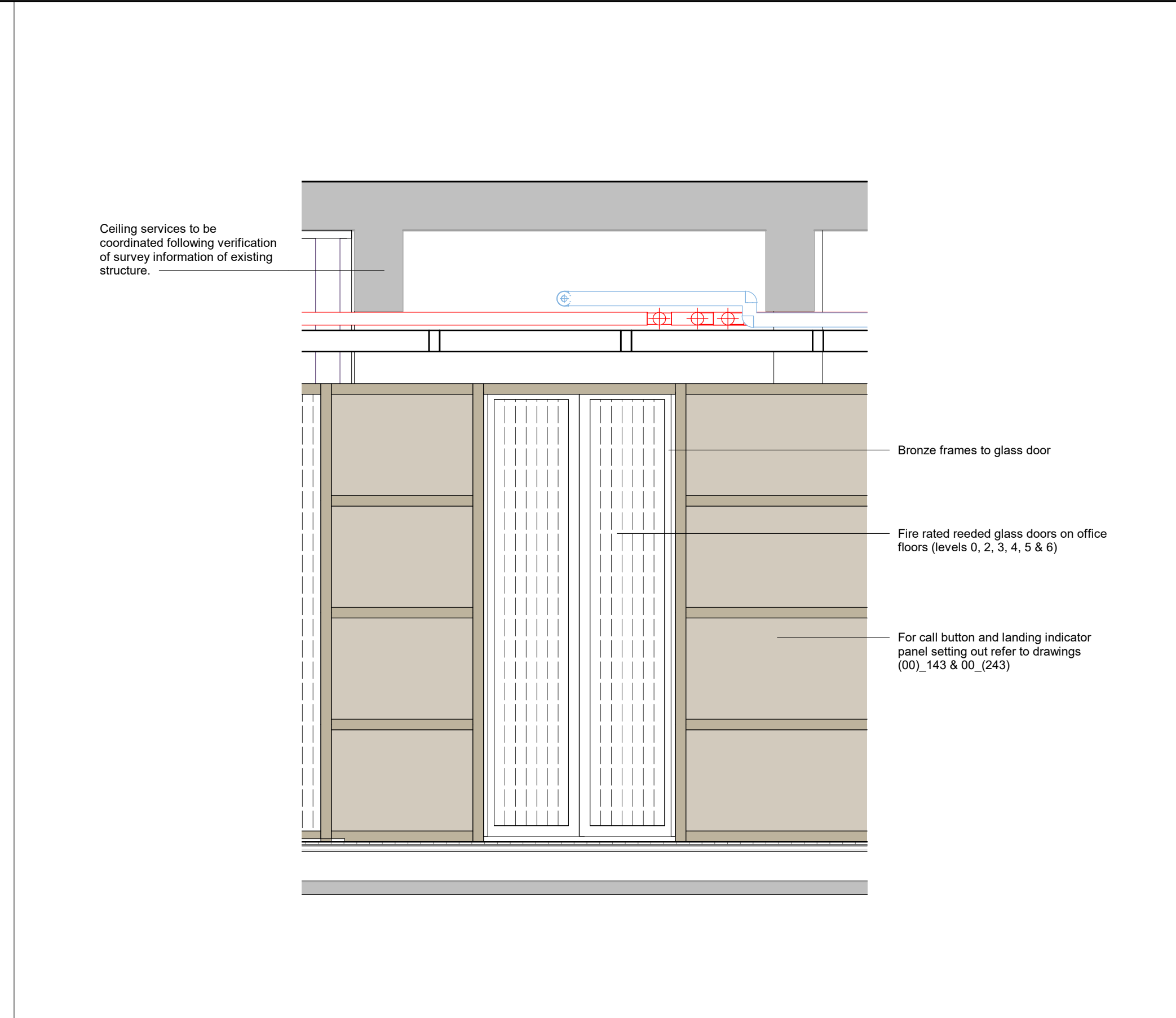
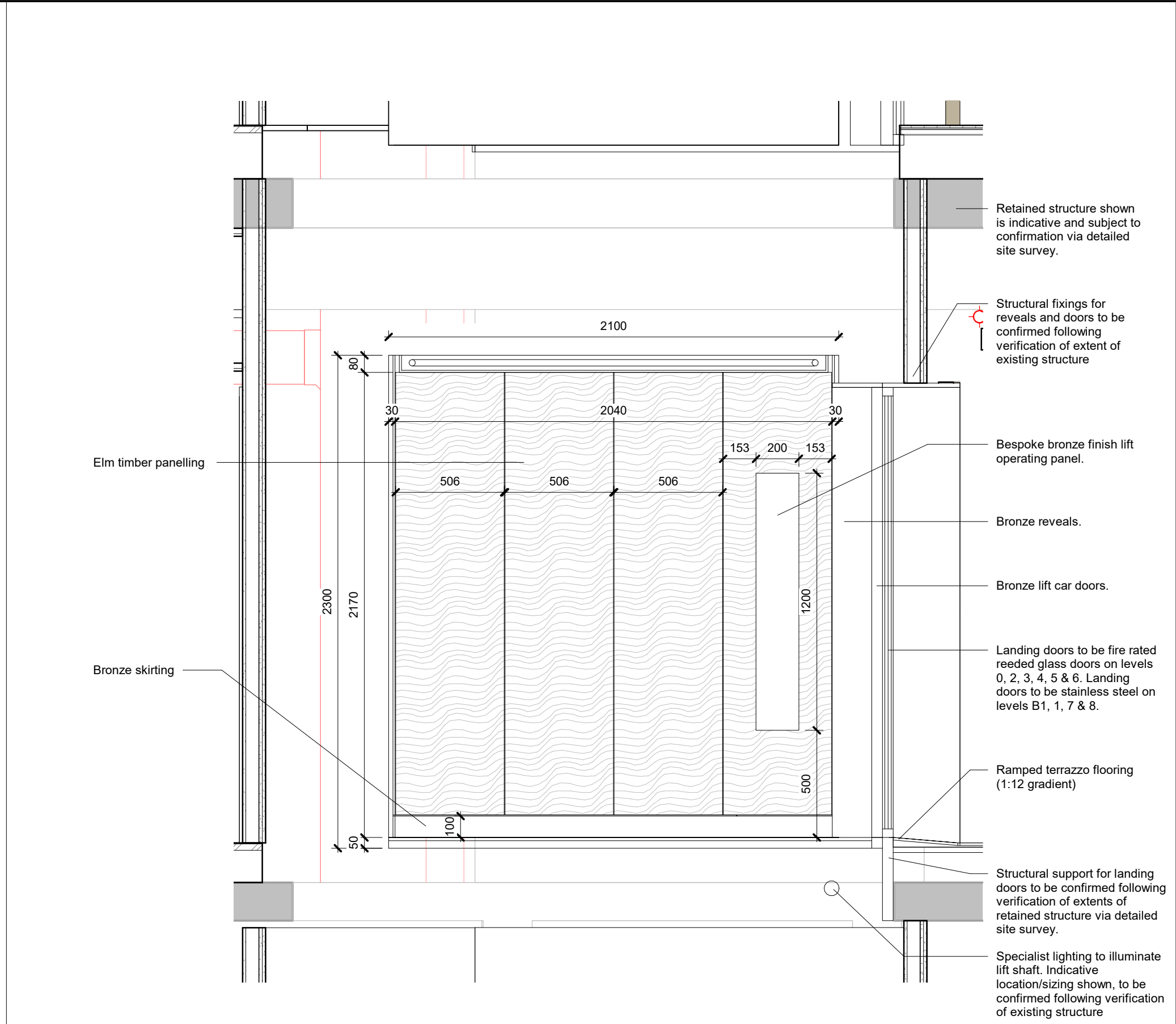


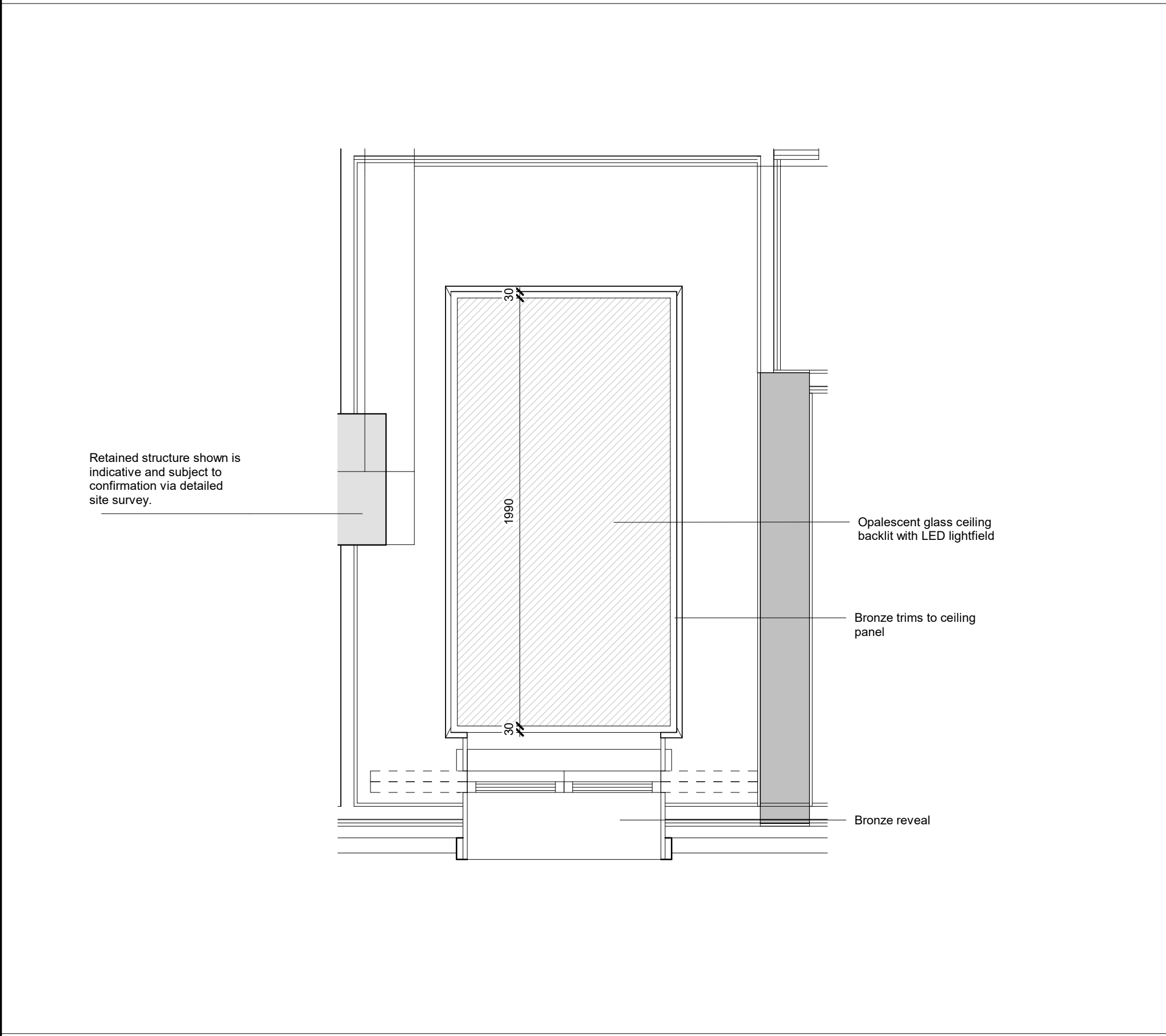
1 LIFT C1 PLAN



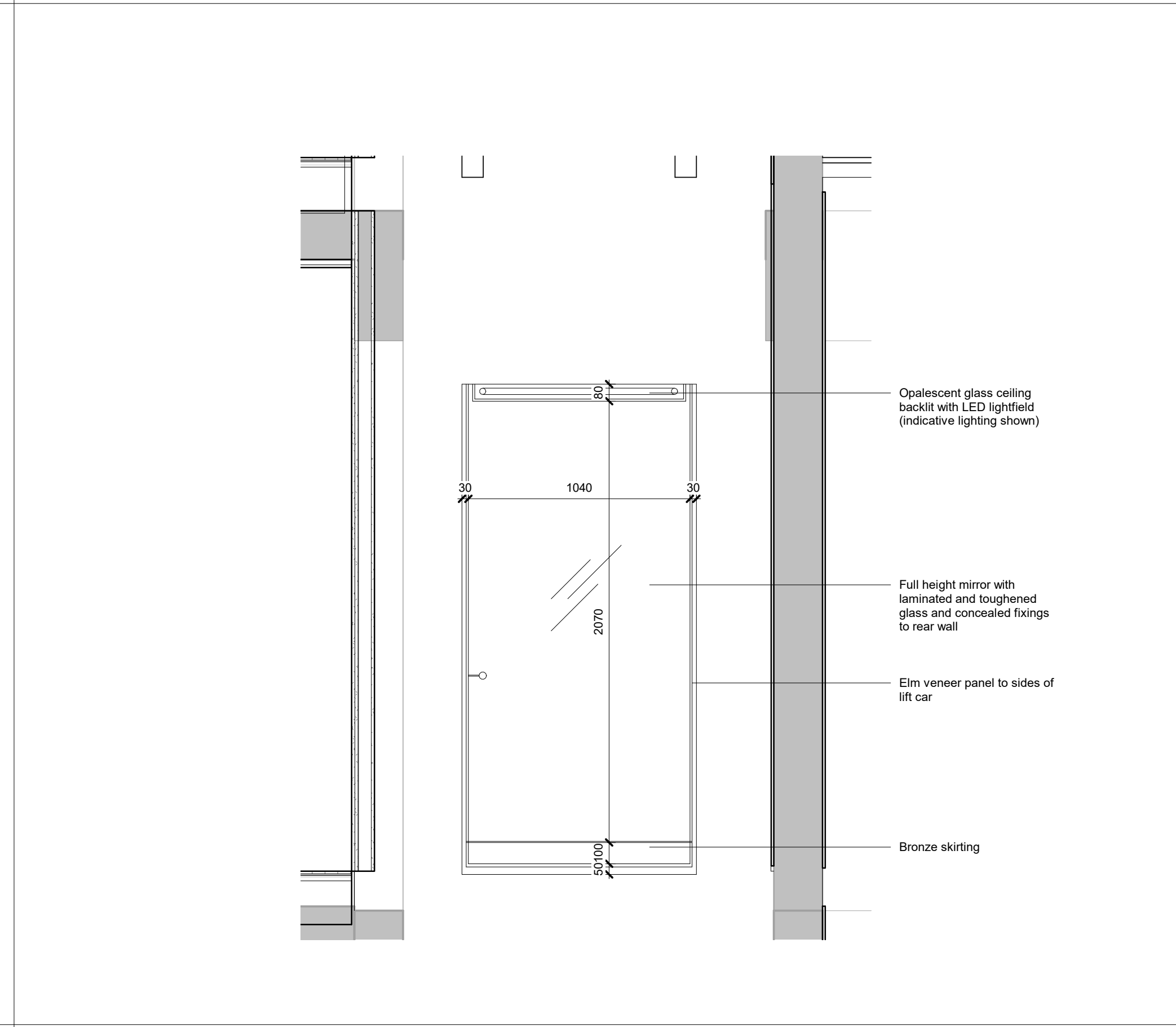
3 LIFT C1 FRONT ELEVATION



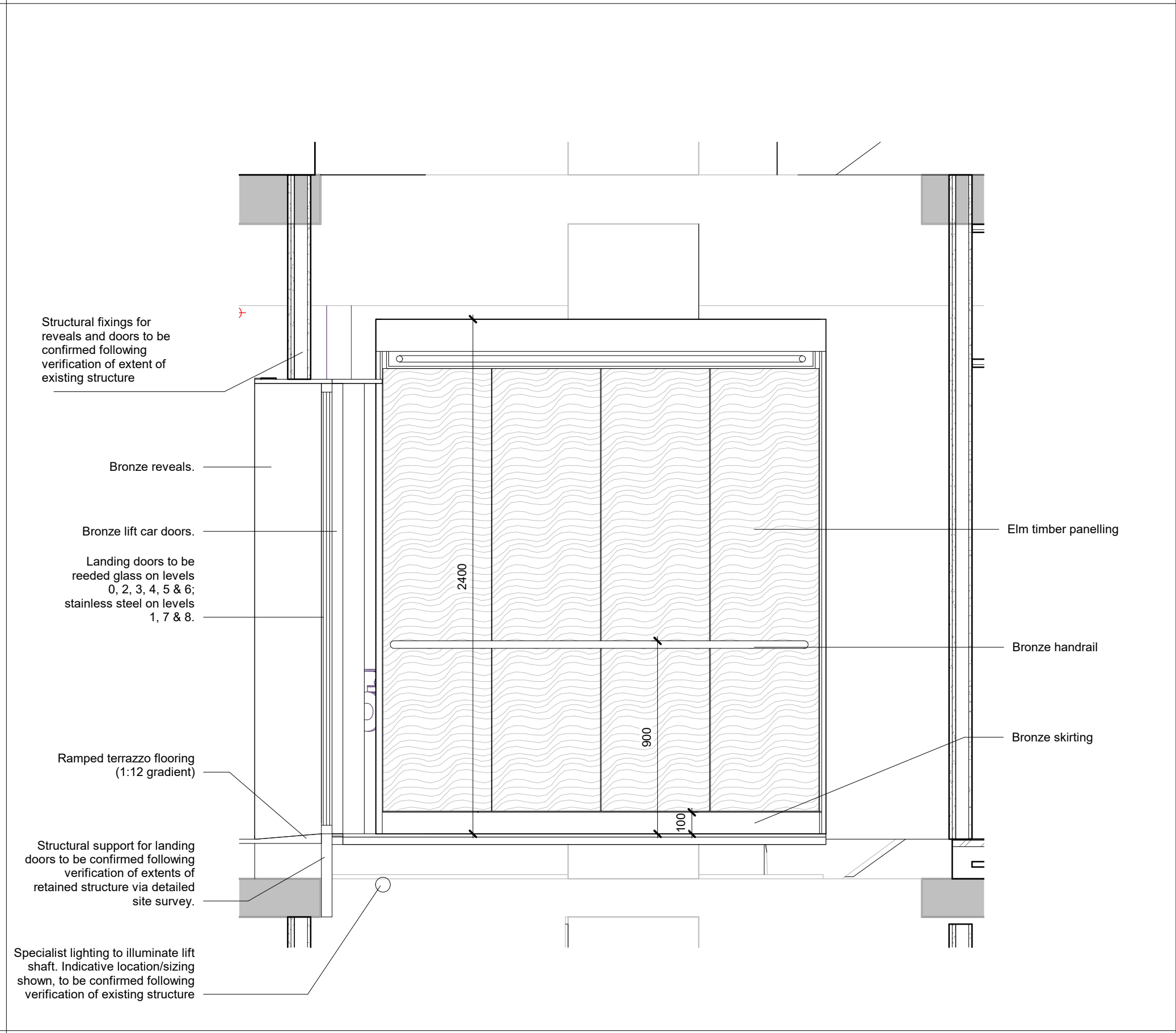
5 LIFT C1 RIGHT ELVEATION



2 LIFT C1 REFLECTED CEILING PLAN



4 LIFT C1 REAR ELEVATION



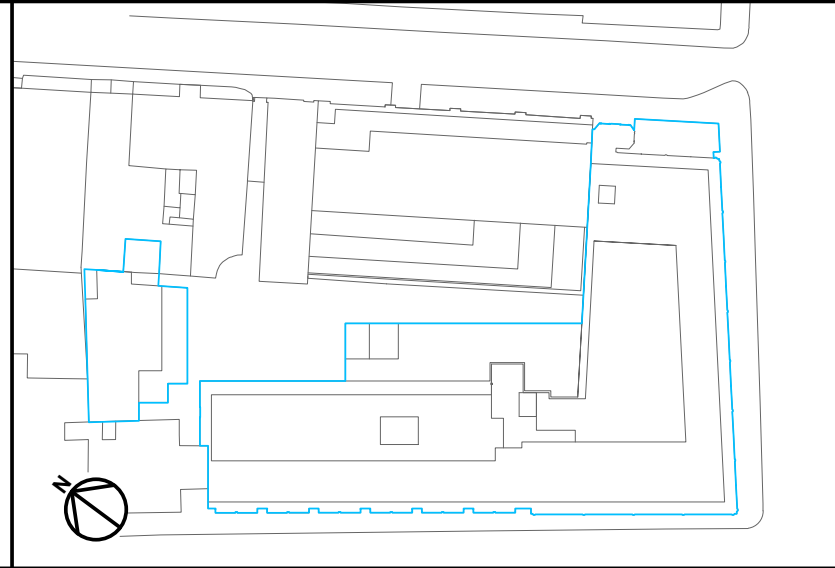
6 LIFT C1 LEFT ELEVATION

KEY		NOTE
Lift number	Lift type (TRS code)	1. For all Core C and Core B lifts, indicative lift shafts are shown, based on provisional survey information of existing structure. Detailed survey measurements to be carried out at Stage 4+, which may affect the lift sizes / types currently specified. 2. Drawings to be read in conjunction with AHMM specification and HPF Lift Installation Specification.
A1	LFT-105	
A2, A3	Bins lifts (goods-only) - refer to HPF Lift Installation Specification	
A4	Arts club servicing lift - refer to HPF Lift Installation Specification	
B1	LFT-104	
B2, B3	LFT-103	
C1	LFT-101	
C2, C3	LFT-100	
D1	LFT-102	

REV	DATE	DESCRIPTION
T01	09/03/20	STAGE 4 ISSUE

CONSULTANTS	
CLIENT:	CROSSTREE REAL ESTATE PARTNERS LLP
STRUCTURAL ENGINEER:	HEYNE TILLET STEEL
MECHANICAL ENGINEER:	HURLEY PALMER FLATT
PROJECT MANAGER:	JACKSON COLES
COST CONSULTANT:	CORE FIVE LLP
HOTEL ARCHITECT:	DEXTER MOREN ASSOCIATES
SUSTAINABILITY CONSULTANT:	EIGHT ASSOCIATES
PLANNING CONSULTANT:	DP9
PROJECT MANAGER:	JACKSON COLES
ACOUSTIC CONSULTANT:	HANN TUCKER

NOTE	
When this drawing is issued in uncontrolled CAD format it will be accompanied by a PDF version and is issued to enable the recipient to prepare their own documents / models / drawings for which they are solely responsible. The recipient should report all drawing errors, omissions and discrepancies to the architect. All dimensions should be checked on site by the contractor and such dimensions shall be the contractor's responsibility.	
Alford Hall Monaghan Morris Limited accepts no responsibility or liability for:- - any use of this drawing by parties other than the party for whom it was prepared or for purposes other than those for which it was prepared - any alterations or additions to or discrepancies arising out of changes to the background information on which the drawings are based that was current at the time of issue, and which occur to that information after it has been issued by AHMM - any loss or degradation of the information held in this drawing resulting from the translation from the original file format to any other file format or from the recipient's reading of it in any other programme or any version of the programme other than that which was used to prepare it - the accuracy of survey information provided by others or for any costs, claims, proceedings and expenses arising out of reliance on such information - any scaling from this drawing other than by the local planning authority solely for the purposes of the planning application to which it relates	



ALLFORD HALL MONAGHAN MORRIS					
ARCHITECTS LTD MORELANDS, 5-23 OLD STREET LONDON EC1V 9HL TEL 020 7251 6261 FAX 020 7251 5123 WEB WWW.AHMM.CO.UK					
job title BERKELEY STREET					
drawing title / location LIFT C01 - CORE C GOODS / FIREFIGHTING / PASSENGER LIFT					
drawn by YK	checked BB	scale 1 : 20@A1	status TENDER		
project 16014	zone	source A	classification (66)_400	drawing no. T01	revision