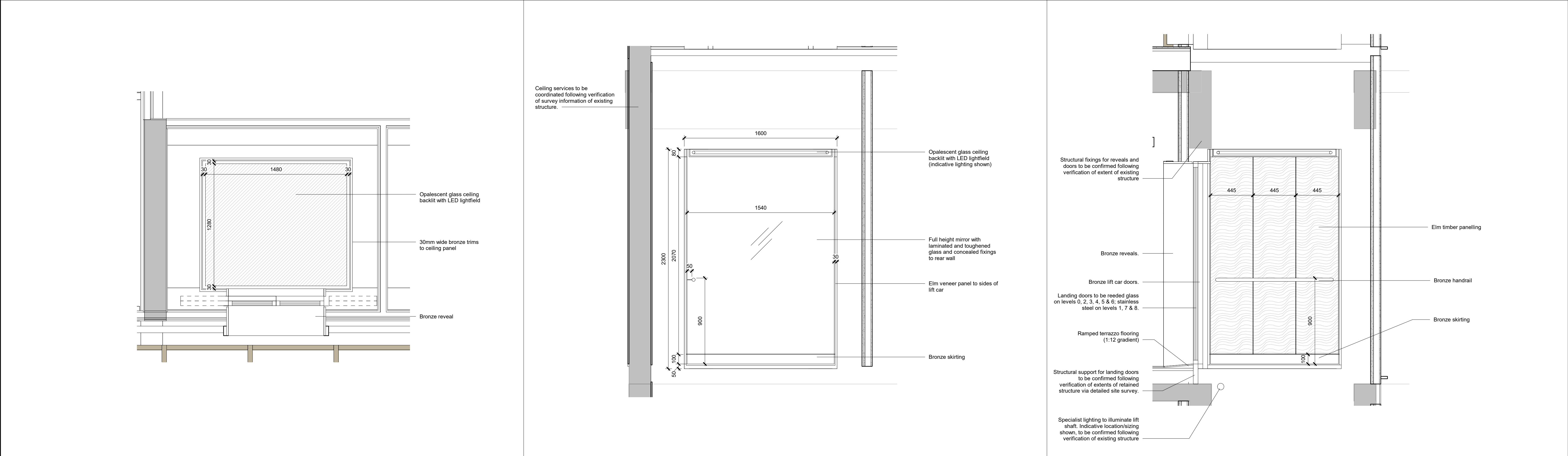


1 LIFTS C2 & C3 PLAN

3 LIFTS C2 & C3 FRONT ELEVATION

5 LIFTS C2 & C3 RIGHT ELEVATION



2 LIFTS C2 & C3 REFLECTED CEILING PLAN

4 LIFTS C2 & C3 REAR ELEVATION

6 LIFTS C2 & C3 LEFT ELEVATION

KEY		NOTE	REV	DATE	DESCRIPTION	CONSULTANTS	NOTE				
Lift number	Lift type (TRS code)	1. For all Core C and Core B lifts, indicative lift shafts are shown, based on provisional survey information of existing structure. Detailed survey measurements to be carried out at Stage 4*, which may affect the lift sizes / types currently specified. 2. Drawings to be read in conjunction with AHMM specification and HPF Lift Installation Specification.	T01	09/03/20	STAGE 4 ISSUE	CLIENT: CROSSTREE REAL ESTATE PARTNERS LLP STRUCTURAL ENGINEER: HEYNE TILLET STIEL MECHANICAL ENGINEER: HURLEY PALMER FLATT PROJECT MANAGER: JACKSON COLES COST CONSULTANT: CORE FIVE LLP HOTEL ARCHITECT: DEXTER MOREN ASSOCIATES SUSTAINABILITY CONSULTANT: EIGHT ASSOCIATES PLANNING CONSULTANT: DPG PROJECT MANAGER: JACKSON COLES ACOUSTIC CONSULTANT: HANN TUCKER	When this drawing is issued in uncontrolled CAD format it will be accompanied by a PDF version and is issued to enable the recipient to prepare their own documents / models / drawings for which they are solely responsible. The recipient should report all drawing errors, omissions and discrepancies to the architect. All dimensions should be checked on site by the contractor and such dimensions shall be the contractor's responsibility. Alford Hall Monaghan Morris Limited accepts no responsibility or liability for:- - any use of this drawing by parties other than the party for whom it was prepared or for purposes other than those for which it was prepared - any alterations or additions to or discrepancies arising out of changes to the background information on which the drawings are based that was current at the time of issue, and which occur to that information after it has been issued by AHMM - any loss or degradation of the information held in this drawing resulting from the translation from the original file format to any other file format or from the recipient's reading of it in any other programme or any version of the programme other than that which was used to prepare it - the accuracy of survey information provided by others or for any costs, claims, proceedings and expenses arising out of reliance on such information - any scaling from this drawing other than by the local planning authority solely for the purposes of the planning application to which it relates				
A1	LFT-105							ALLFORD HALL MONAGHAN MORRIS ARCHITECTS Ltd MORELANDS, 5-23 OLD STREET LONDON EC1V 9HL TEL 020 7251 6261 FAX 020 7251 5123 WEB WWW.AHMM.CO.UK job title BERKELEY STREET drawing title / location LIFTS C02 & C03 - CORE C PASSENGER LIFTS			
A2, A3	Bins lifts (goods-only) - refer to HPF Lift Installation Specification										
A4	Arts club servicing lift - refer to HPF Lift Installation Specification										
B1	LFT-104										
B2, B3	LFT-103										
C1	LFT-101										
C2, C3	LFT-100										
D1	LFT-102										
								drawn by YK checked BB scale 1 : 20@A1 status TENDER			
								project 16014 zone A source (66)_401 classification T01 revision			