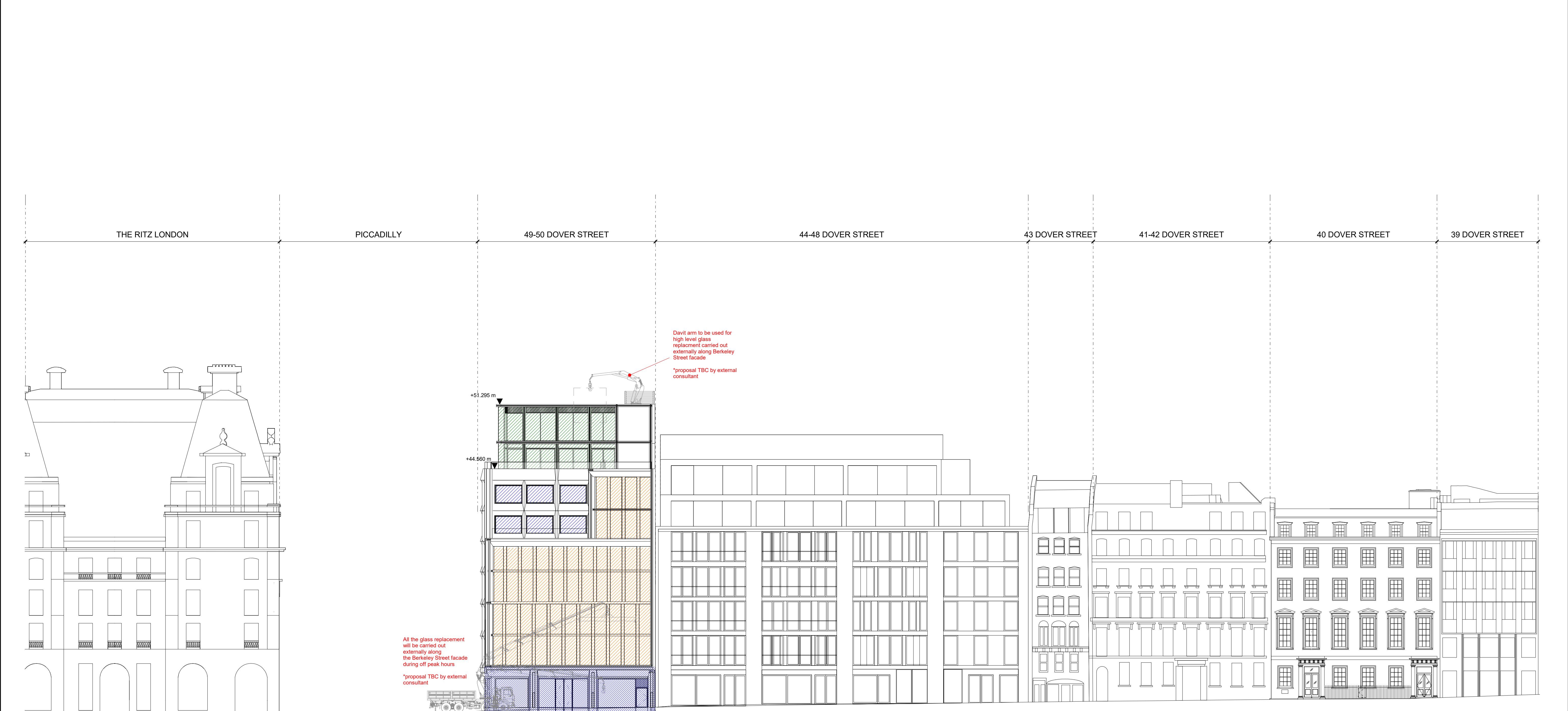


1 PROPOSED BERKELEY STREET_CLEANING & MAINTENANCE 1 : 200

<div>(75) Cleaning & Maintenance systems</div> <div><div><div></div></div>POLE SYSTEM</div> <div><div><div></div></div>ROPE ACCESS SYSTEM</div> <div><div><div></div></div>A-FRAME DEADWEIGHT SYSTEM</div> <div><div>* (75) series drawings to be read in conjunction with Falcon abseiling strategy</div></div>		<table><tr><th>REV</th><th>DATE</th><th>DESCRIPTION</th></tr><tr><td>T01</td><td>09/03/20</td><td>STAGE 4 ISSUE</td></tr></table>	REV	DATE	DESCRIPTION	T01	09/03/20	STAGE 4 ISSUE	<table><tr><th colspan="2">CONSULTANTS</th></tr><tr><td>CLIENT:</td><td>CROSSTREE REAL ESTATE PARTNERS LLP</td></tr><tr><td>STRUCTURAL ENGINEER:</td><td>HEYNE TILLET STEEL</td></tr><tr><td>MECHANICAL ENGINEER:</td><td>HURLEY PALMER FLATT</td></tr><tr><td>PROJECT MANAGER:</td><td>JACKSON COLES</td></tr><tr><td>COST CONSULTANT:</td><td>CORE FIVE LLP</td></tr><tr><td>HOTEL ARCHITECT:</td><td>DEXTER MOREN ASSOCIATES</td></tr><tr><td>SUSTAINABILITY CONSULTANT:</td><td>EIGHT ASSOCIATES</td></tr><tr><td>PLANNING CONSULTANT:</td><td>DP9</td></tr><tr><td>PROJECT MANAGER:</td><td>JACKSON COLES</td></tr><tr><td>ACOUSTIC CONSULTANT:</td><td>HANN TUCKER</td></tr><tr><td></td><td></td></tr><tr><td></td><td></td></tr><tr><td></td><td></td></tr><tr><td></td><td></td></tr><tr><td></td><td></td></tr></table>	CONSULTANTS		CLIENT:	CROSSTREE REAL ESTATE PARTNERS LLP	STRUCTURAL ENGINEER:	HEYNE TILLET STEEL	MECHANICAL ENGINEER:	HURLEY PALMER FLATT	PROJECT MANAGER:	JACKSON COLES	COST CONSULTANT:	CORE FIVE LLP	HOTEL ARCHITECT:	DEXTER MOREN ASSOCIATES	SUSTAINABILITY CONSULTANT:	EIGHT ASSOCIATES	PLANNING CONSULTANT:	DP9	PROJECT MANAGER:	JACKSON COLES	ACOUSTIC CONSULTANT:	HANN TUCKER											<div>NOTE</div> <div>When this drawing is issued in uncontrolled CAD format it will be accompanied by a PDF version and is issued to enable the recipient to prepare their own documents / models / drawings for which they are solely responsible.</div> <div>The recipient should report all drawing errors, omissions and discrepancies to the architect. All dimensions should be checked on site by the contractor and such dimensions shall be the contractor's responsibility.</div> <div>Allford Hall Monaghan Morris Limited accepts no responsibility or liability for:-</div> <div>- any use of this drawing by parties other than the party for whom it was prepared or for purposes other than those for which it was prepared</div> <div>- any alterations or additions to or discrepancies arising out of changes to the background information on which the drawings are based that was current at the time of issue, and which occur to that information after it has been issued by AHMM</div> <div>- any loss or degradation of the information held in this drawing resulting from the translation from the original file format to any other file format or from the recipient's reading of it in any other programme or any version of the programme other than that which was used to prepare it</div> <div>- the accuracy of survey information provided by others or for any costs, claims, proceedings and expenses arising out of reliance on such information</div> <div>- any scaling from this drawing other than by the local planning authority solely for the purposes of the planning application to which it relates</div>		<div>ALLFORD HALL MONAGHAN MORRIS</div> <div>ARCHITECTS Ltd</div> <div>MORELANDS, 5-23 OLD STREET LONDON EC1V 9HL</div> <div>TEL 020 7251 5261 FAX 020 7251 5123 WEB WWW.AHMM.CO.UK</div> <div>job title</div> <div>BERKELEY STREET</div> <div>drawing title / location</div> <div>PROPOSED BERKELEY STREET</div> <div>drawn by checked scale status</div> <div>AuthorCheckerAs indicated@A1TENDER</div> <div>project zone source classification drawing no. revision</div> <div>16014A(75)_101T01</div>
REV	DATE	DESCRIPTION																																										
T01	09/03/20	STAGE 4 ISSUE																																										
CONSULTANTS																																												
CLIENT:	CROSSTREE REAL ESTATE PARTNERS LLP																																											
STRUCTURAL ENGINEER:	HEYNE TILLET STEEL																																											
MECHANICAL ENGINEER:	HURLEY PALMER FLATT																																											
PROJECT MANAGER:	JACKSON COLES																																											
COST CONSULTANT:	CORE FIVE LLP																																											
HOTEL ARCHITECT:	DEXTER MOREN ASSOCIATES																																											
SUSTAINABILITY CONSULTANT:	EIGHT ASSOCIATES																																											
PLANNING CONSULTANT:	DP9																																											
PROJECT MANAGER:	JACKSON COLES																																											
ACOUSTIC CONSULTANT:	HANN TUCKER																																											

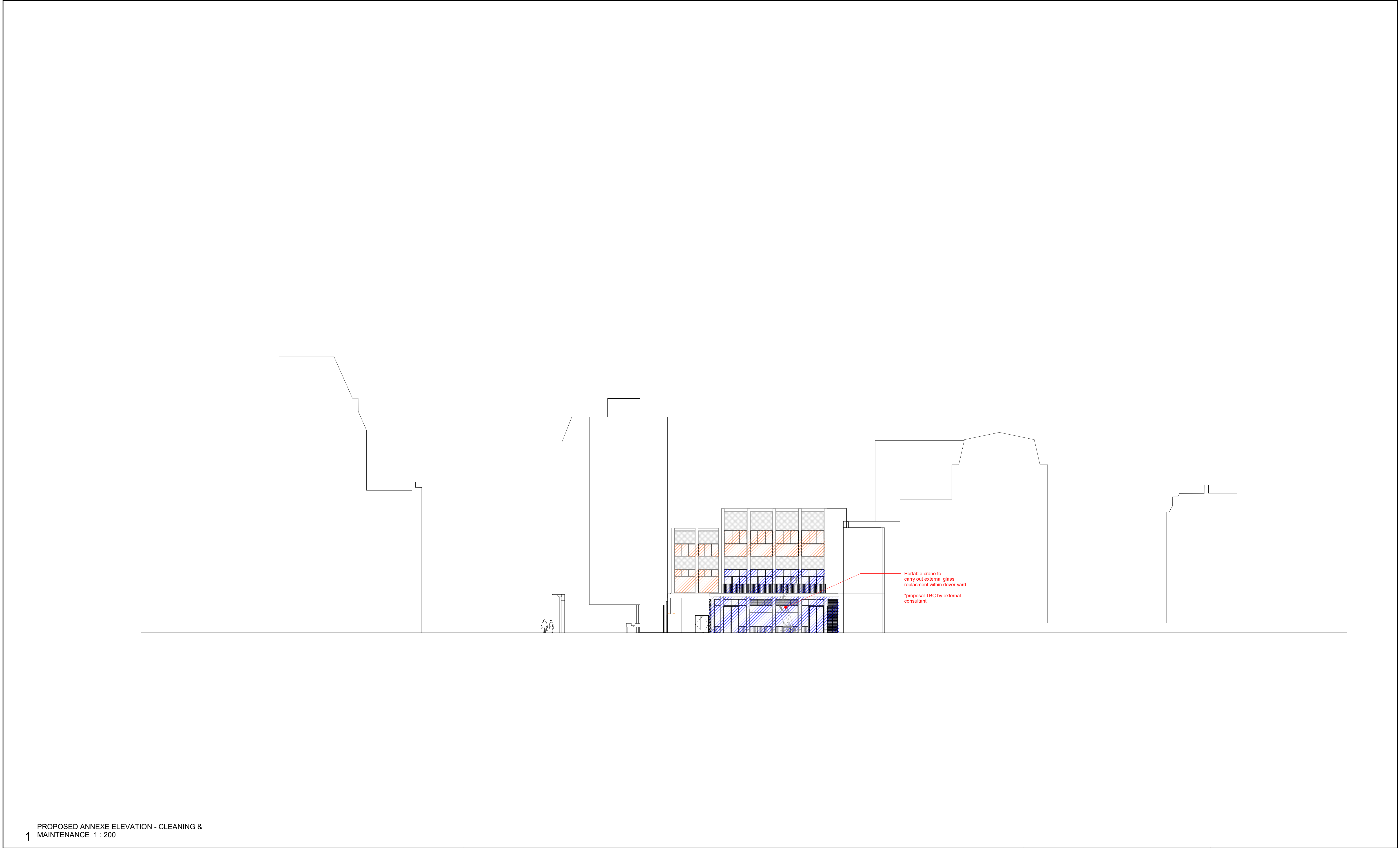
1

© Allford Hall Monaghan Morris Limited

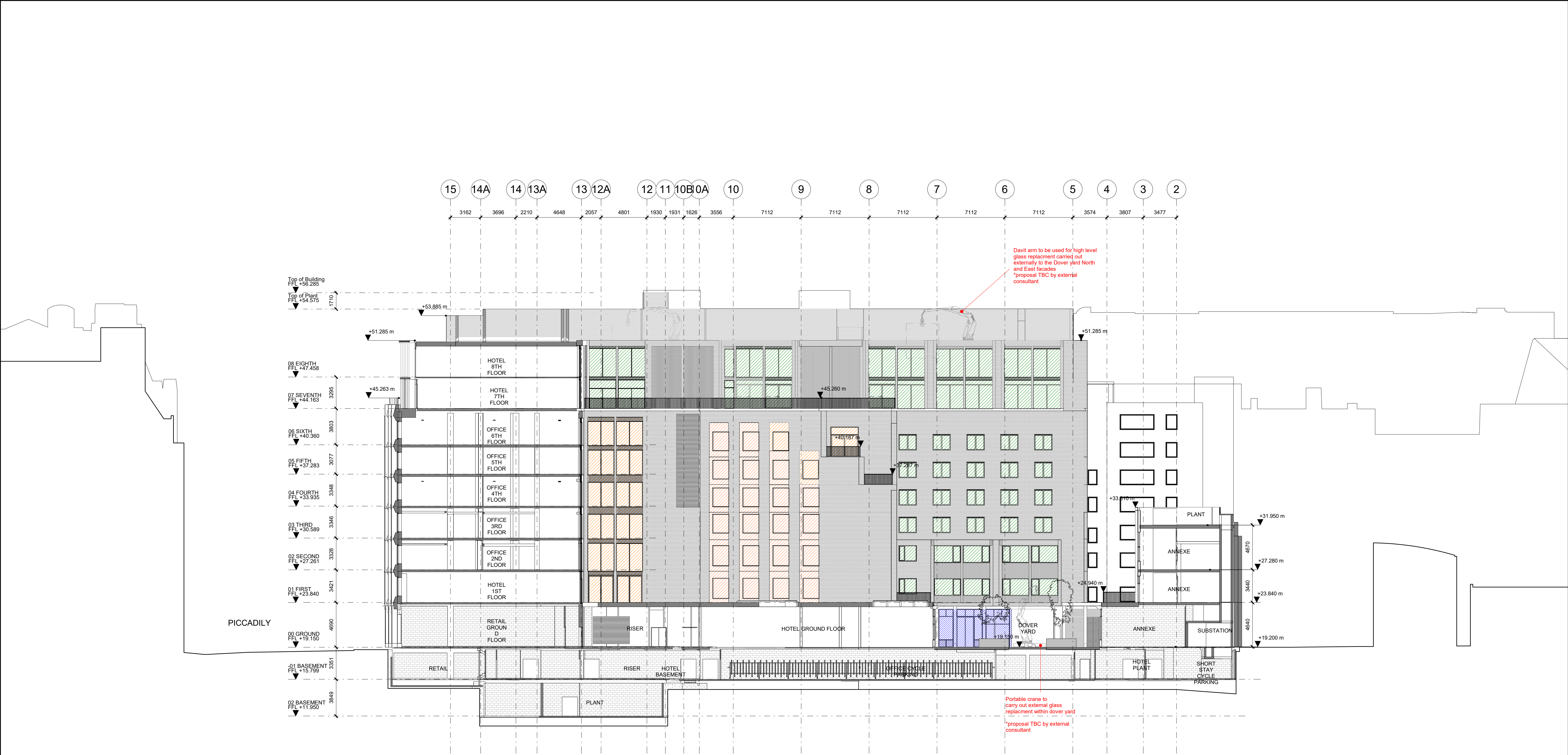


PROPOSED ELEVATION DOVER STREET_CLEANING & MAINTENANCE 1 : 200

<div>(75) Cleaning & Maintenance systems</div> <div><div><div></div></div>POLE SYSTEM</div> <div><div><div></div></div>ROPE ACCESS SYSTEM</div> <div><div><div></div></div>A-FRAME DEADWEIGHT SYSTEM</div> <div><div>*(75) series drawings to be read in conjunction with Falcon absailing strategy</div></div>		<table><tr><th>REV</th><th>DATE</th><th>DESCRIPTION</th></tr><tr><td>T01</td><td>09/03/20</td><td>STAGE 4 ISSUE</td></tr></table>	REV	DATE	DESCRIPTION	T01	09/03/20	STAGE 4 ISSUE	<table><tr><th colspan="2">CONSULTANTS</th></tr><tr><td>CLIENT:</td><td>CROSSTREE REAL ESTATE PARTNERS LLP</td></tr><tr><td>STRUCTURAL ENGINEER:</td><td>HEYNE TILLET STEEL</td></tr><tr><td>MECHANICAL ENGINEER:</td><td>HURLEY PALMER FLATT</td></tr><tr><td>PROJECT MANAGER:</td><td>JACKSON COLES</td></tr><tr><td>COST CONSULTANT:</td><td>CORE FIVE LLP</td></tr><tr><td>HOTEL ARCHITECT:</td><td>DEXTER MOREN ASSOCIATES</td></tr><tr><td>SUSTAINABILITY CONSULTANT:</td><td>EIGHT ASSOCIATES</td></tr><tr><td>PLANNING CONSULTANT:</td><td>DP9</td></tr><tr><td>PROJECT MANAGER:</td><td>JACKSON COLES</td></tr><tr><td>ACOUSTIC CONSULTANT:</td><td>HANN TUCKER</td></tr><tr><td></td><td></td></tr><tr><td></td><td></td></tr><tr><td></td><td></td></tr></table>	CONSULTANTS		CLIENT:	CROSSTREE REAL ESTATE PARTNERS LLP	STRUCTURAL ENGINEER:	HEYNE TILLET STEEL	MECHANICAL ENGINEER:	HURLEY PALMER FLATT	PROJECT MANAGER:	JACKSON COLES	COST CONSULTANT:	CORE FIVE LLP	HOTEL ARCHITECT:	DEXTER MOREN ASSOCIATES	SUSTAINABILITY CONSULTANT:	EIGHT ASSOCIATES	PLANNING CONSULTANT:	DP9	PROJECT MANAGER:	JACKSON COLES	ACOUSTIC CONSULTANT:	HANN TUCKER							<div><div>NOTE</div><div>When this drawing is issued in uncontrolled CAD format it will be accompanied by a PDF version and is issued to enable the recipient to prepare their own documents / models / drawings for which they are solely responsible. The recipient should report all drawing errors, omissions and discrepancies to the architect. All dimensions should be checked on site by the contractor and such dimensions shall be the contractor's responsibility.</div><div>Alford Hall Monaghan Morris Limited accepts no responsibility or liability for:- - any use of this drawing by parties other than the party for whom it was prepared or for purposes other than those for which it was prepared - any alterations or additions to or discrepancies arising out of changes to the background information on which the drawings are based that was current at the time of issue, and which occur to that information after it has been issued by AHMM - any loss or degradation of the information held in this drawing resulting from the translation from the original file format to any other file format or from the recipient's reading of it in any other programme or any version of the programme other than that which was used to prepare it - the accuracy of survey information provided by others or for any costs, claims, proceedings and expenses arising out of reliance on such information - any scaling from this drawing other than by the local planning authority solely for the purposes of the planning application to which it relates</div></div>	<div></div>	<div><div>ALLFORD HALL MONAGHAN MORRIS</div><div>ARCHITECTS Ltd MORELANDS, 5-23 OLD STREET LONDON EC1V 9HL TEL 020 7251 5261 FAX 020 7251 5123 WEB WWW.AHMM.CO.UK</div><div>job title BERKELEY STREET</div><div>drawing title / location PROPOSED ELEVATION DOVER STREET</div><div><div>drawn bycheckedscale</div><div>AuthorCheckerAs indicated@A1</div><div>status TENDER</div></div><div><div>projectzone</div><div>16014A</div><div><div>sourceclassificationdrawing norevision</div><div>(75)_103T01</div></div></div></div>
REV	DATE	DESCRIPTION																																						
T01	09/03/20	STAGE 4 ISSUE																																						
CONSULTANTS																																								
CLIENT:	CROSSTREE REAL ESTATE PARTNERS LLP																																							
STRUCTURAL ENGINEER:	HEYNE TILLET STEEL																																							
MECHANICAL ENGINEER:	HURLEY PALMER FLATT																																							
PROJECT MANAGER:	JACKSON COLES																																							
COST CONSULTANT:	CORE FIVE LLP																																							
HOTEL ARCHITECT:	DEXTER MOREN ASSOCIATES																																							
SUSTAINABILITY CONSULTANT:	EIGHT ASSOCIATES																																							
PLANNING CONSULTANT:	DP9																																							
PROJECT MANAGER:	JACKSON COLES																																							
ACOUSTIC CONSULTANT:	HANN TUCKER																																							

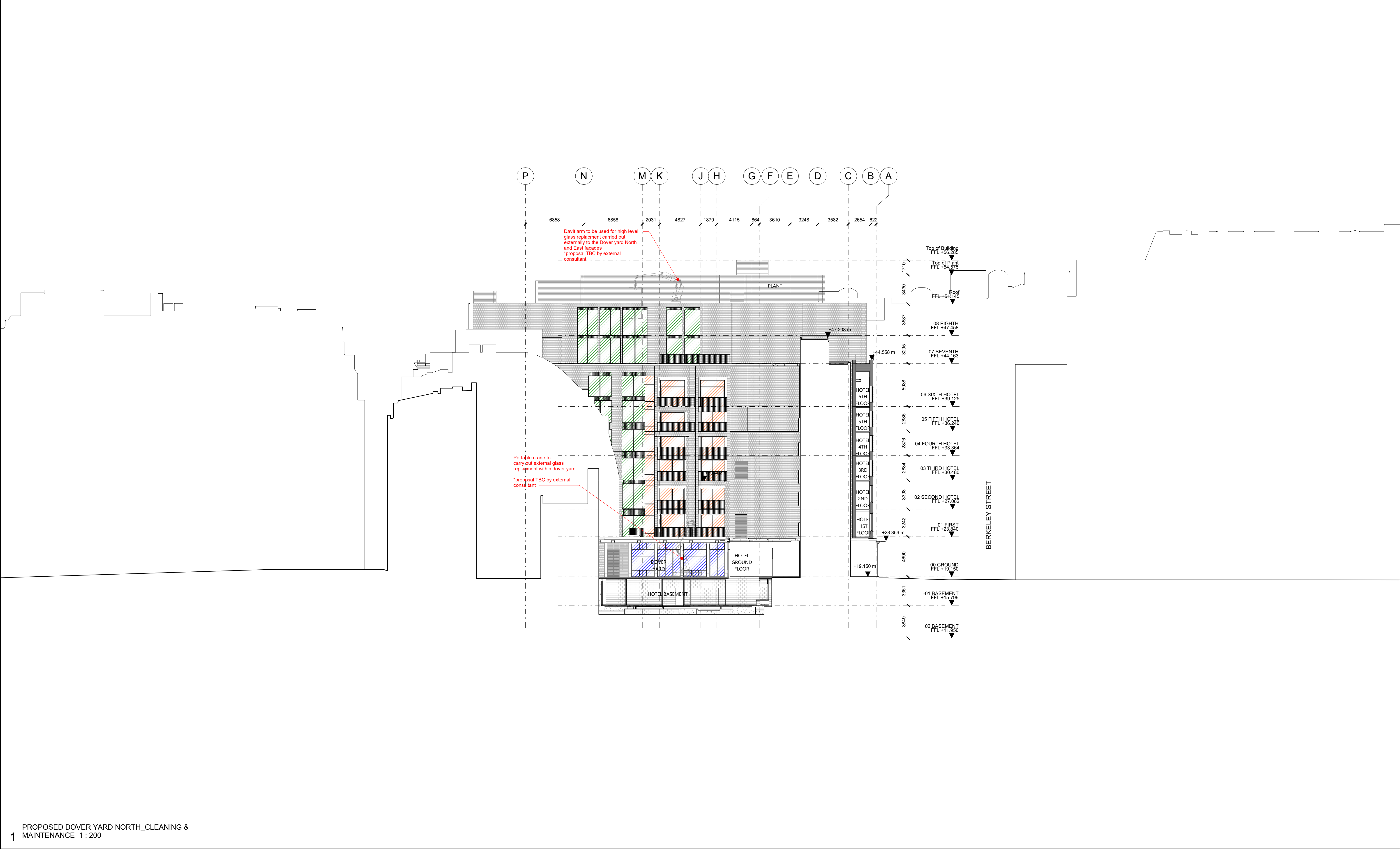


<div>KEY</div> <div>(75) Cleaning & Maintenance systems</div> <div><div></div>POLE SYSTEM</div> <div><div></div>ROPE ACCESS SYSTEM</div> <div><div></div>A-FRAME DEADWEIGHT SYSTEM</div> <div><div></div><div>*(75) series drawings to be read in conjunction with Falcon abseiling strategy</div></div>
--



PROPOSED DOVER YARD EAST__CLEANING & MAINTENANCE 1 : 200

<div>(75) Cleaning & Maintenance systems</div> <div><div><div></div></div>POLE SYSTEM</div> <div><div><div></div></div>ROPE ACCESS SYSTEM</div> <div><div><div></div></div>A-FRAME DEADWEIGHT SYSTEM</div> <div><div>* (75) series drawings to be read in conjunction with Falcon abseiling strategy</div></div>			<div>REV</div> <div>DATE</div> <div>DESCRIPTION</div> <div>T0109/03/20STAGE 4 ISSUE</div>		<div>CONSULTANTS</div> <div>CLIENT: CROSSTREE REAL ESTATE PARTNERS LLP</div> <div>STRUCTURAL ENGINEER: HEYNE TILLET STEEL</div> <div>MECHANICAL ENGINEER: HURLEY PALMER FLATT</div> <div>PROJECT MANAGER: JACKSON COLES</div> <div>COST CONSULTANT: CORE FIVE LLP</div> <div>HOTEL ARCHITECT: DEXTER MOREN ASSOCIATES</div> <div>SUSTAINABILITY CONSULTANT: EIGHT ASSOCIATES</div> <div>PLANNING CONSULTANT: DP9</div> <div>PROJECT MANAGER: JACKSON COLES</div> <div>ACOUSTIC CONSULTANT: HANN TUCKER</div> <div></div> <div></div> <div></div> <div></div> <div></div> <div></div>		<div>NOTE</div> <div>When this drawing is issued in uncontrolled CAD format it will be accompanied by a PDF version and is issued to enable the recipient to prepare their own documents / models / drawings for which they are solely responsible.</div> <div>The recipient should report all drawing errors, omissions and discrepancies to the architect. All dimensions should be checked on site by the contractor and such dimensions shall be the contractor's responsibility.</div> <div>Allford Hall Monaghan Morris Limited accepts no responsibility or liability for:-</div> <div>- any use of this drawing by parties other than the party for whom it was prepared or for purposes other than those for which it was prepared</div> <div>- any alterations or additions to or discrepancies arising out of changes to the background information on which the drawings are based that was current at the time of issue, and which occur to that information after it has been issued by AHMM</div> <div>- any loss or degradation of the information held in this drawing resulting from the translation from the original file format to any other file format or from the recipient's reading of it in any other programme or any version of the programme other than that which was used to prepare it</div> <div>- the accuracy of survey information provided by others or for any costs, claims, proceedings and expenses arising out of reliance on such information</div> <div>- any scaling from this drawing other than by the local planning authority solely for the purposes of the planning application to which it relates</div>		<div></div>		<div><div>ALLFORD HALL MONAGHAN MORRIS</div><div>ARCHITECTS Ltd</div><div>MORELANDS, 5-23 OLD STREET LONDON EC1V 9HL</div><div>TEL 020 7251 5261 FAX 020 7251 5123 WEB WWW.AHMM.CO.UK</div><div>job title</div><div>BERKELEY STREET</div><div>drawing title / location</div><div>PROPOSED DOVER YARD EAST</div><div>drawn by checked scale status</div><div>AuthorCheckerAs indicated@A1TENDER</div><div>project zone source classification drawing no. revision</div><div>16014A(75)_301T01</div></div>	
--	--	--	---	--	--	--	---	--	-------------	--	--	--



<div><div>(75) Cleaning & Maintenance systems</div><div><div><div></div></div> POLE SYSTEM</div><div><div><div></div></div> ROPE ACCESS SYSTEM</div><div><div><div></div></div> A-FRAME DEADWEIGHT SYSTEM</div></div> <div><div><div></div></div> (75) series drawings to be read in conjunction with Falcon abseiling strategy</div>	<div><div>REV</div><div>DATE</div><div>DESCRIPTION</div></div> <div><div>T01</div><div>09/03/20</div><div>STAGE 4 ISSUE</div></div>	<div><div>CONSULTANTS</div><div><div>CLIENT:</div><div>CROSSTREE REAL ESTATE PARTNERS LLP</div></div><div><div>STRUCTURAL ENGINEER:</div><div>HEYNE TILLET STIEL</div></div><div><div>MECHANICAL ENGINEER:</div><div>HURLEY PALMER FLATT</div></div><div><div>PROJECT MANAGER:</div><div>JACKSON COLES</div></div><div><div>COST CONSULTANT:</div><div>CORE FIVE LLP</div></div><div><div>HOTEL ARCHITECT:</div><div>DEXTER MOREN ASSOCIATES</div></div><div><div>SUSTAINABILITY CONSULTANT:</div><div>EIGHT ASSOCIATES</div></div><div><div>PLANNING CONSULTANT:</div><div>DP9</div></div><div><div>PROJECT MANAGER:</div><div>JACKSON COLES</div></div><div><div>ACOUSTIC CONSULTANT:</div><div>HANN TUCKER</div></div><div><div></div><div></div></div><div><div></div><div></div></div><div><div></div><div></div></div></div>	<div><div>NOTE</div><div>When this drawing is issued in uncontrolled CAD format it will be accompanied by a PDF version and is issued to enable the recipient to prepare their own documents / models / drawings for which they are solely responsible. The recipient should report all drawing errors, omissions and discrepancies to the architect. All dimensions should be checked on site by the contractor and such dimensions shall be the contractor's responsibility.</div><div>Alford Hall Monaghan Morris Limited accepts no responsibility or liability for:- - any use of this drawing by parties other than the party for whom it was prepared or for purposes other than those for which it was prepared - any alterations or additions to or discrepancies arising out of changes to the background information on which the drawings are based that was current at the time of issue, and which occur to that information after it has been issued by AHMM - any loss or degradation of the information held in this drawing resulting from the translation from the original file format to any other file format or from the recipient's reading of it in any other programme or any version of the programme other than that which was used to prepare it - the accuracy of survey information provided by others or for any costs, claims, proceedings and expenses arising out of reliance on such information - any scaling from this drawing other than by the local planning authority solely for the purposes of the planning application to which it relates</div></div>	<div></div>	<div><div>ALLFORD HALL MONAGHAN MORRIS</div><div>ARCHITECTS Ltd MORELANDS, 5-23 OLD STREET LONDON EC1V 9HL TEL 020 7251 5261 FAX 020 7251 5123 WEB WWW.AHMM.CO.UK</div><div>job title BERKELEY STREET</div><div>drawing title / location PROPOSED DOVER YARD NORTH</div><div><div>drawn by</div><div>checked</div><div>scale</div><div>status</div></div><div><div>Author</div><div>Checker</div><div>As indicated</div><div>A1</div><div>TENDER</div></div><div><div>project</div><div>zone</div><div>source</div><div>classification</div><div>drawing no.</div><div>revision</div></div><div><div>16014</div><div></div><div>A</div><div>(75)_302</div><div>T01</div></div></div>
---	---	--	---	-------------	--