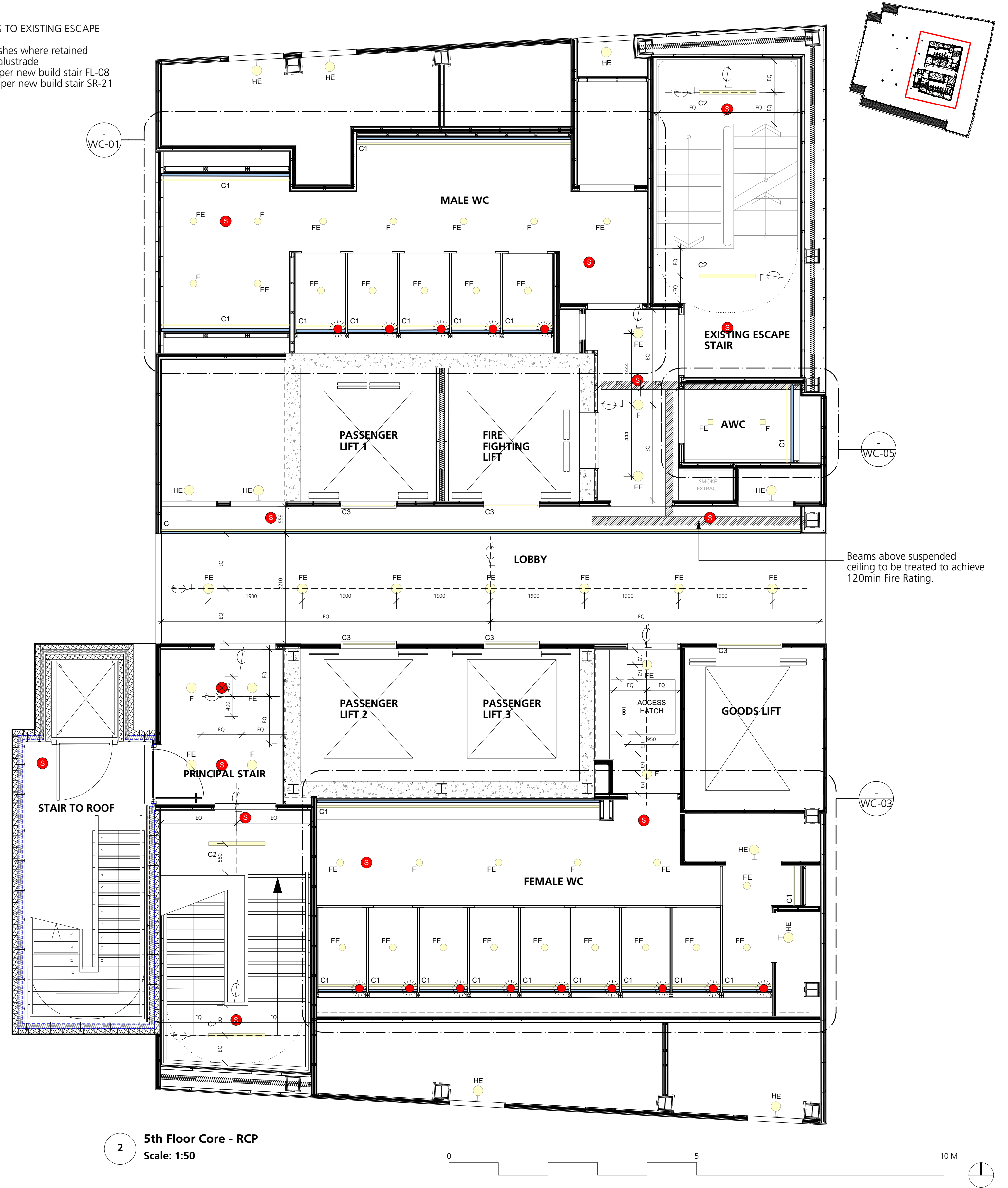


GENERAL NOTES TO EXISTING ESCAPE STAIRCASE:
 - Repair wall finishes where retained
 - Repair/retain balustrade
 - New carpet as per new build stair FL-08
 - New nosing as per new build stair SR-21



DRAWING NOTES:
 All dimensions to be checked on site prior to commencement of any works, and/or preparation of any shop drawings.
 Sizes of and dimensions to any structural elements are indicative only. See structural engineers drawings for actual sizes/dimensions.
 Sizes of and dimensions to any service elements are indicative only. See service engineers drawings for actual sizes and dimensions.
 This drawing to be read in conjunction with all other Architect's drawings, specifications and other Consultants' information.
 All proprietary systems shown on this drawing are to be installed strictly in accordance with the Manufacturers/Suppliers recommended details.
 Any discrepancies between information shown on this drawing and any other contract information or manufacturers/suppliers recommendations is to be brought to the attention of the Architect.
 DO NOT SCALE FROM THIS DRAWING.

DRAWING NOTES:

Notes

FL-04. Small format porcelain tile to core
 FL-05. Large format porcelain tile on pedestals
 FL-06. Mattwell to 5th floor landing
 FL-08. Carpet to stairs
 RA-02. Raised access floor system - tiled over
 SK-02. Porcelain tile skirting
 SR-21. Black anodised aluminium / rubber nosing

Core and EOT lighting:

LED strip lighting
 Recessed linear luminaire
 Built in LED light fitting in lift reveal

Other services (refer to MEP information):

Passive infrared sensor (PIR)
 Ceiling mounted speaker
 Combined optical multihead smoke detector
 Combined optical smoke detector and beacon

VAD Beacon
 Daylight Sensor
 Sprinkler Head
 Exit Sign
 Linear air grille

C1	FIRST CONSTRUCTION ISSUE. CHANGES TO ALIGN WITH GA CONSTRUCTION ISSUE CLOUDED.	29/01/20
T3	REVISED STAGE 4 ISSUE	07/08/19
T2	REVISED STAGE 4 ISSUE	14/06/19
T1	STAGE 4 ISSUE	04/06/19
STATUS	REVISION	DATE

DRAWING	Proposed Fifth Floor Core Plan
SCALE	1:50 @ A1 (1:100 @ A3)
DATE	Jun 2019
DWG No.	1069_CO-05
DRAWING STATUS	FOR CONSTRUCTION
DRAWN BY	CG
REVISION	C1
Information contained on this drawing is the sole copyright of Buckley Gray Yeoman and is not to be reproduced without their permission.	

Buckley Gray Yeoman	STUDIO 4.04 THE TEA BUILDING 56 SHOREDITCH HIGH STREET LONDON E1 6JJ T: 020 7033 9913 F: 020 7033 9914
CLIENT	25 Cannon Street Limited
PROJECT	25 Cannon Street, EC4M