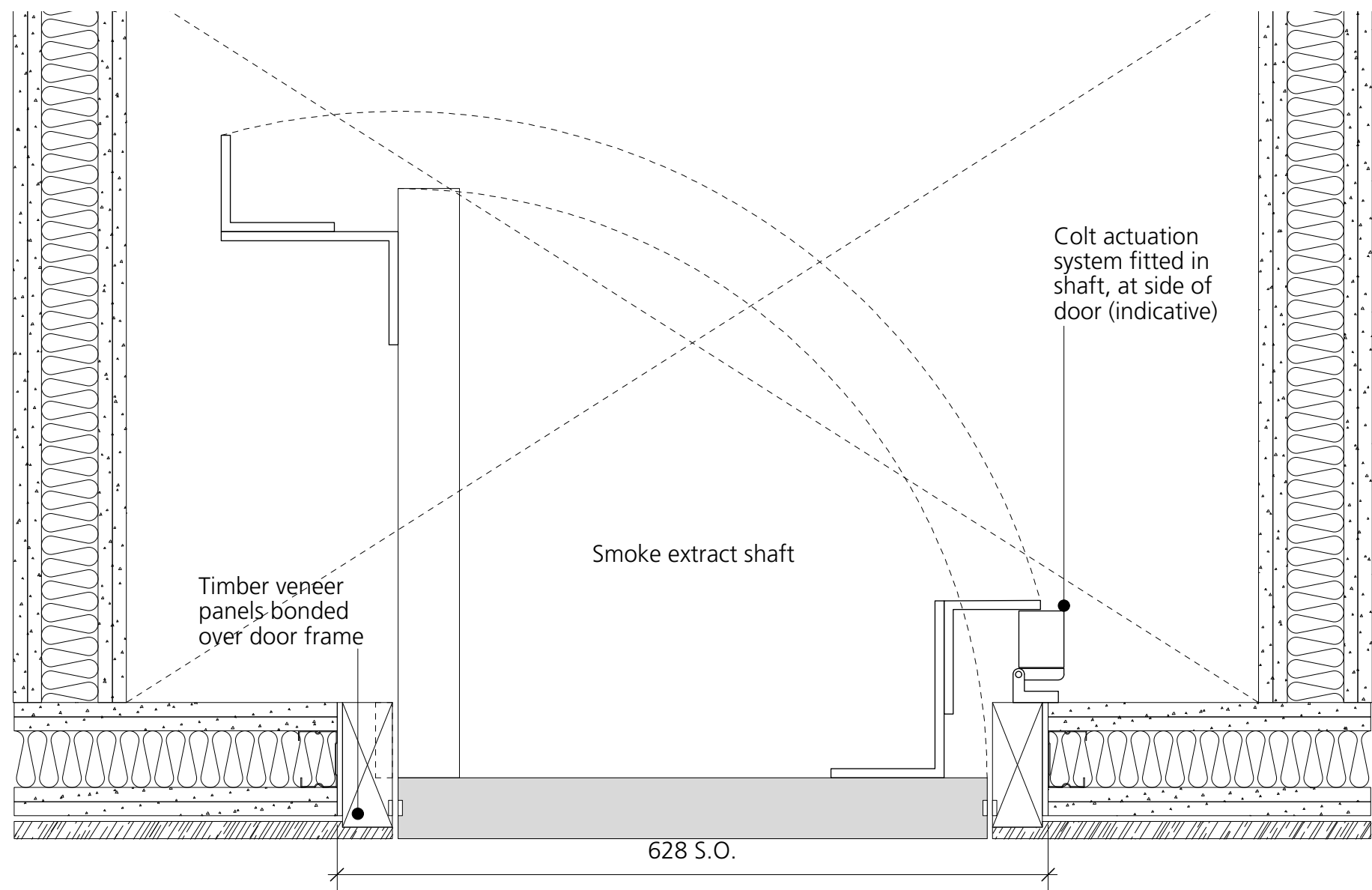
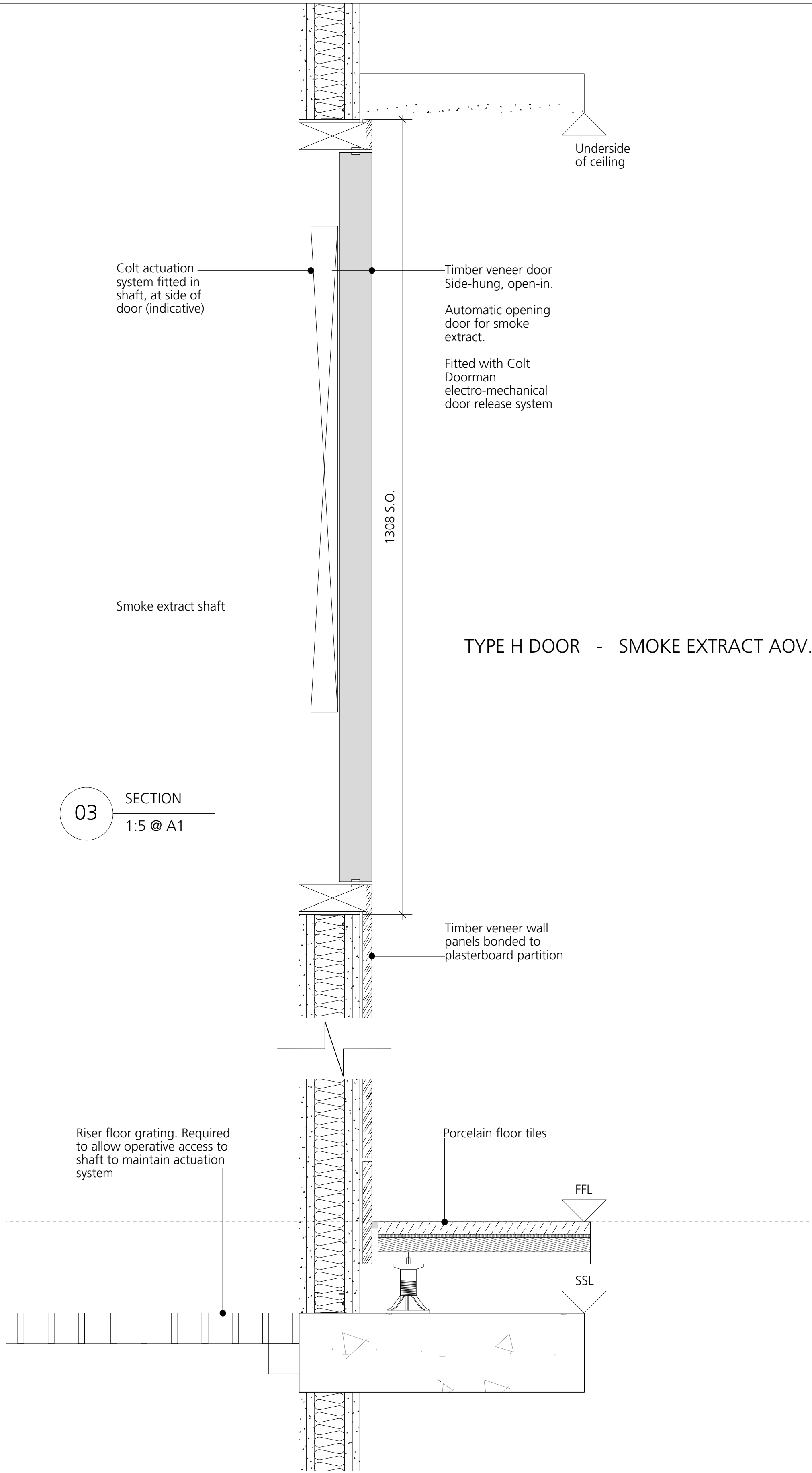


01 ELEVATION  
1:5 @ A1



02 PLAN  
1:5 @ A1



03 SECTION  
1:5 @ A1

<div>DRAWING NOTES:</div> <div>All dimensions to be checked on site prior to commencement of any works, and/or preparation of any shop drawings.</div> <div>Sizes of and dimensions to any structural elements are indicative only. See structural engineers drawings for actual sizes/dimensions.</div> <div>Sizes of and dimensions to any service elements are indicative only. See service engineers drawings for actual sizes and dimensions.</div> <div>This drawing to be read in conjunction with all other Architect's drawings, specifications and other Consultants' information.</div> <div>All proprietary systems shown on this drawing are to be installed strictly in accordance with the Manufacturers/Suppliers recommended details.</div> <div>Any discrepancies between information shown on this drawing and any other contract information or manufacturers/suppliers recommendations is to be brought to the attention of the Architect.</div> <div>DO NOT SCALE FROM THIS DRAWING.</div>			<div>DRAWING NOTES:</div> <div>For further door information, please refer to:</div> <div>BGY Door Schedule.</div> <div>BGY Specification L20.</div> <div>BGY "DT" Series drawings (Door Type).</div> <div>BGY "FS" Series drawings (Fire Strategy).</div> <div>MITT / Hann Tucker Acoustic Report.</div> <div>3v Ironmongery Schedule.</div>			<div>Door thicknesses vary depending on fire ratings.</div> <div>FD30 / FD30S: 44mm FD60 / FD60S: 54mm</div> <div>This is subject to further design development by door supplier.</div> <div>Doors with concealed door closers may also require 54mm thickness.</div>			<div>DRAWING</div> <div>Door Details 15</div> <div>SCALE1:5 @ A1 (1:10 @ A3)</div> <div>DRAWING FILE REF-</div> <div>DATEMay 2019</div> <div>DRAWN BYAH</div> <div>DWG No.1069_DD_15</div> <div>REVISIONT1</div> <div>DRAWING STATUSSTAGE 4</div> <div>Information contained on this drawing is the sole copyright of Buckley Gray Yeoman and is not to be reproduced without their permission.</div>			<div>Buckley Gray Yeoman</div> <div>Studio 4.04 The Tea Building 56 Shoreditch High Street London E1 6JJ T: 020 7033 9913 F: 020 7033 9914</div> <div>CLIENT25 Cannon Street Limited</div> <div>PROJECT25 Cannon Street, EC4M</div>		
T1			STAGE 4 ISSUE			05/06/19								
STATUS			REVISION			DATE								