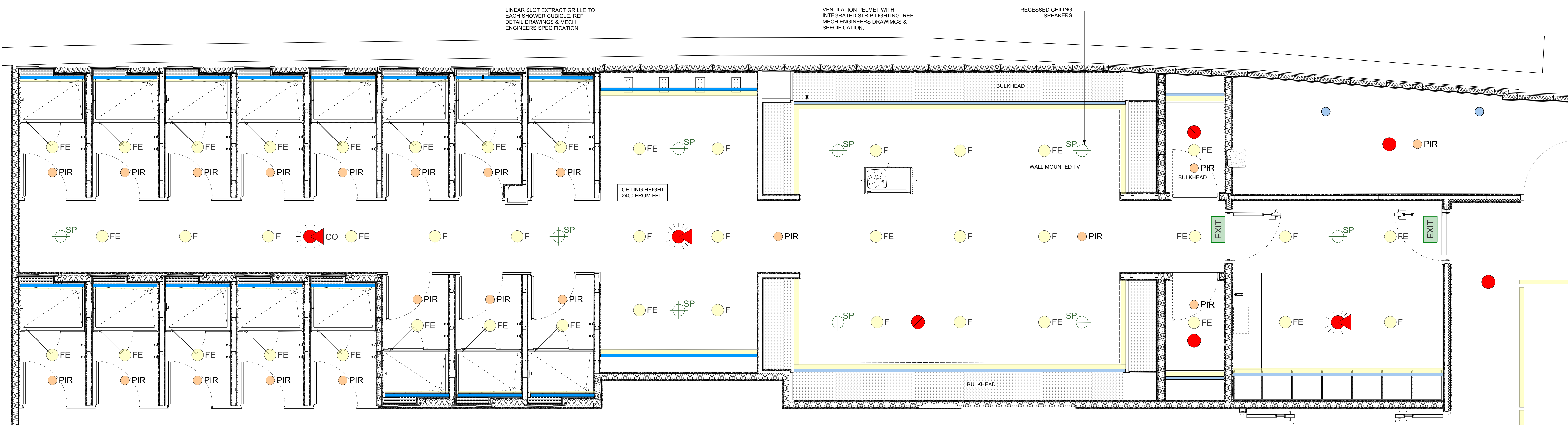
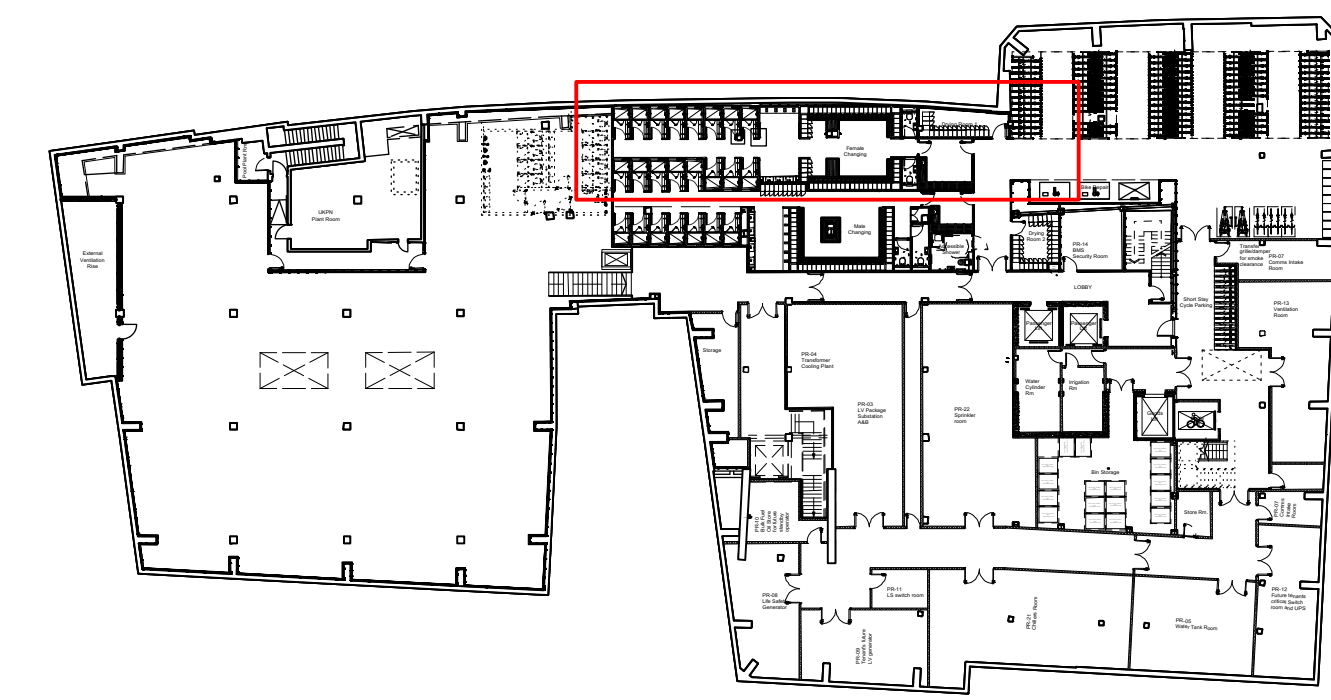


1 Proposed Female Changing Facilities Layout
Scale: 1:25



2 Proposed Female Changing Facilities RCP
Scale: 1:25

- Office floors:
- Metal ceiling tile
 - Integrated services zone between tiles
- Light fittings integrated with ceiling tile layout:
- 1000 x 300mm
 - 1200 x 300mm
- Circular light fittings:
- 900mm dia. Surface-mounted
- Core and EOT lighting:
- LED strip lighting
 - Recessed linear luminaire
 - LED recessed downlight
 - LED surface-mounted wall luminaire
 - LED surface-mounted wall luminaire
- BOH lighting:
- LED surface-mounted linear bulkhead
- Reception lighting (GSP prefix):
- LED strip lighting
 - Linear air grille
 - Wall-mounted feature lighting
 - Feature light fitting
- Other services (refer to MEP information):
- Passive infrared sensor (PIR)
 - Combined optical smoke detector, beacon and sounder
 - Combined optical multihead smoke detector
 - Linear air grille
 - Daylight Sensor
 - Sprinkler Head
 - Exit Sign



0 3 5 M

GENERAL NOTES:

All dimensions to be checked on site prior to commencement of any works, and/or preparation of any shop drawings.

Sizes of and dimensions to any structural elements are indicative only. See structural engineers drawings for actual sizes / dimensions.

Sizes of and dimensions to any service elements are indicative only. See service engineers drawings for actual sizes and dimensions.

This drawing to be read in conjunction with all other Architect's drawings, specifications and other Consultants' information.

All proprietary systems shown on this drawing are to be installed strictly in accordance with the Manufacturers/Suppliers recommended details.

Any discrepancies between information shown on this drawing and any other contract information or manufacturers/suppliers recommendations is to be brought to the attention of the Architect.

DO NOT SCALE FROM THIS DRAWING.

NOTES:

T2	REVISED STAGE 4 ISSUE	18/06/19
T1	STAGE 4 ISSUE	07/06/19
REVISION		DATE
Buckley Gray Yeoman		
Studio 4.04 The Tea Building 56 Shoreditch High Street London E1 6JJ T: 020 7033 9913 F: 020 7033 9914		
CLIENT	25 Cannon Street Limited	
PROJECT	25 Cannon Street, EC4M	
DRAWING	End of Travel - Female Changing Room Plan	
SCALE	1:25 @ A0 (1:71 @ A3)	
DATE	DEC 2018	DRAWN BY MR
DWG No.	1069_EOT-11	REVISION T2
DRAWING STATUS	STAGE 4	

Information contained on this drawing is the sole copyright of Buckley Gray Yeoman and is not to be reproduced without their permission.