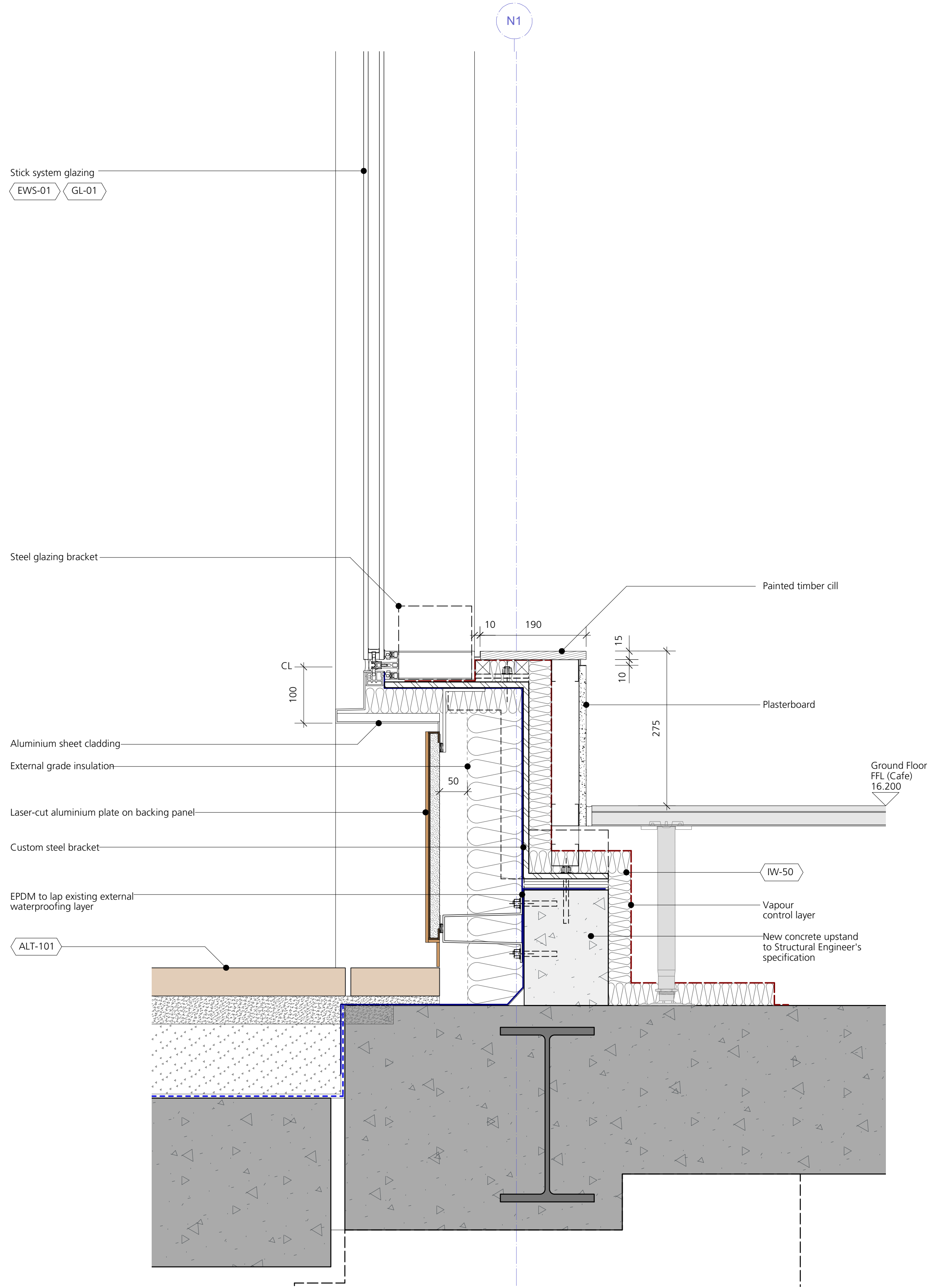


1 Typical Bay -Ground Floor Shopfront Cill Section
Scale: 1:5



2 Typical Bay -Ground Floor Shopfront Cill Section
Scale: 1:5

DRAWING NOTES:

All dimensions to be checked on site prior to commencement of any works, and/or preparation of any shop drawings.

Sizes of and dimensions to any structural elements are indicative only. See structural engineers drawings for actual sizes/dimensions.

Sizes of and dimensions to any service elements are indicative only. See service engineers drawings for actual sizes and dimensions.

This drawing to be read in conjunction with all other Architect's drawings, specifications and other Consultants' information.

All proprietary systems shown on this drawing are to be installed strictly in accordance with the Manufacturers/Suppliers recommended details.

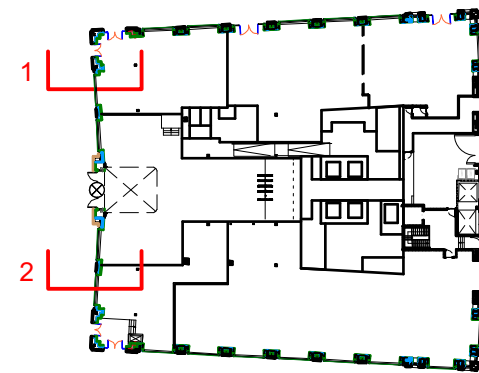
Any discrepancies between information shown on this drawing and any other contract information or manufacturers/suppliers recommendations is to be brought to the attention of the Architect.

DO NOT SCALE FROM THIS DRAWING.

DRAWING NOTES:

BAL-01	Glass balustrade with stainless steel cap	EWS-07	Circulation area glazing
CF-02	Suspended plasterboard ceiling	EWS-11	Limestone cladding to the main entrance
CF-03	Lay-in metal tile ceiling system	EWS-12	Replacement limestone to window returns and balconies
EWS-01	Shopfront glazing with feature metal reveals & concealed louvers at top	EWS-13	Limestone cornice at level 4
EWS-02	Office and retail glazing with expressed caps	EWS-14	New granite plinth
EWS-03	Office glazing with metal reveal and decorative limestone spandrel	FP-01	Fire protection to new columns
EWS-04	Office glazing with pressure caps	FP-02	New firestops
EWS-05	Office glazing with horizontal and vertical expressed aluminium cladding	FP-03	New cavity barriers
EWS-06	Entrance double-storey glazing	FP-04	Existing firestops. TBC on site
		GL-01	Insulating glass units (clear vision glazing, low iron)
		GL-02	Insulating glass units (clear vision glazing, reduced iron)
		GL-03	Monolithic glass balustrade (clear glass, low iron)

IW-50	Plasterboard on stud frame & insulation (ground floor)
IW-51	Plasterboard & insulation product, dot & dab fixed
IW-52	Plasterboard & insulation product, 30 mins FR
IW-54	Plasterboard cladding to columns
IW-60	Plasterboard on liner (5th floor)
IW-61	Metal sheet on board (5th floor)
TR-02	Blind box, recessed
TR-03	Blind box, recessed with hinged access
WF-01	Veneered panelling to walls
WF-04	Metal sheet cladding to reveals



C1 T3 T2 T1	FIRST CONSTRUCTION ISSUE REVISED STAGE 4 ISSUE REVISED STAGE 4 ISSUE STAGE 4 ISSUE	20/01/20 29/08/19 12/07/19 05/06/19	DRAWING		<div>Buckley Gray Yeoman</div> <div>Studio 4.04 The Tea Building 56 Shoreditch High Street London E1 6JJ T: 020 7033 9913 F: 020 7033 9914</div>
			Typical Facade Details 03		
			SCALE 1:5 @ A1 (1:10 @ A3)	DRAWING FILE REF 1069-A-x-D-xx-Facade	
			DATE Nov. 2018	DRAWN BY MR	
			DWG No. 1069-FA-03	REVISION C1	
STATUS REVISION		DRAWING STATUS CONSTRUCTION		CLIENT 25 Cannon Street Limited	
		Information contained on this drawing is the sole copyright of Buckley Gray Yeoman and is not to be reproduced without their permission.		PROJECT 25 Cannon Street, EC4M	