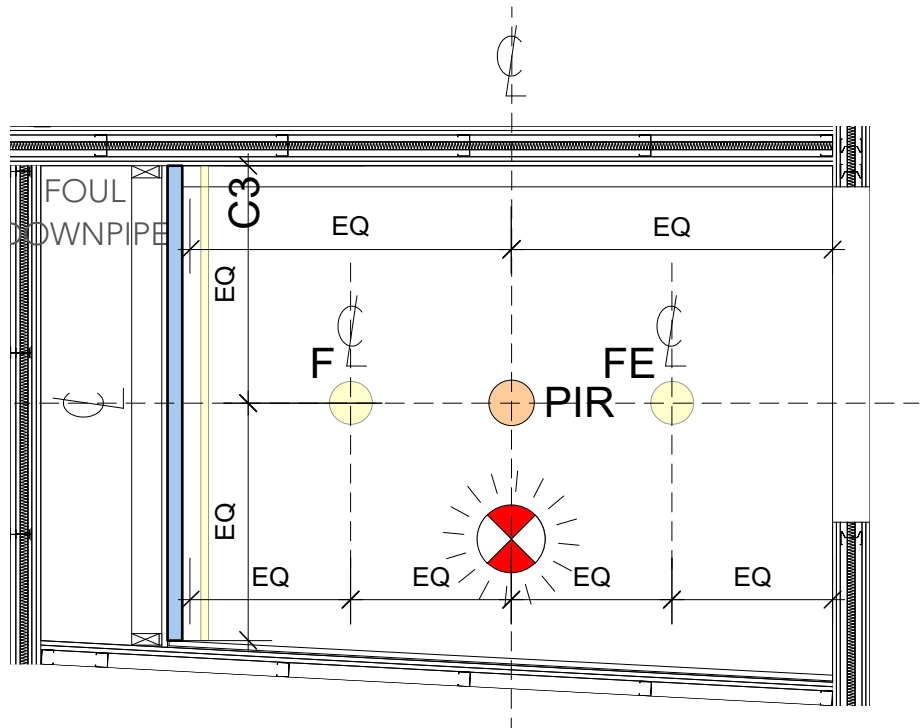
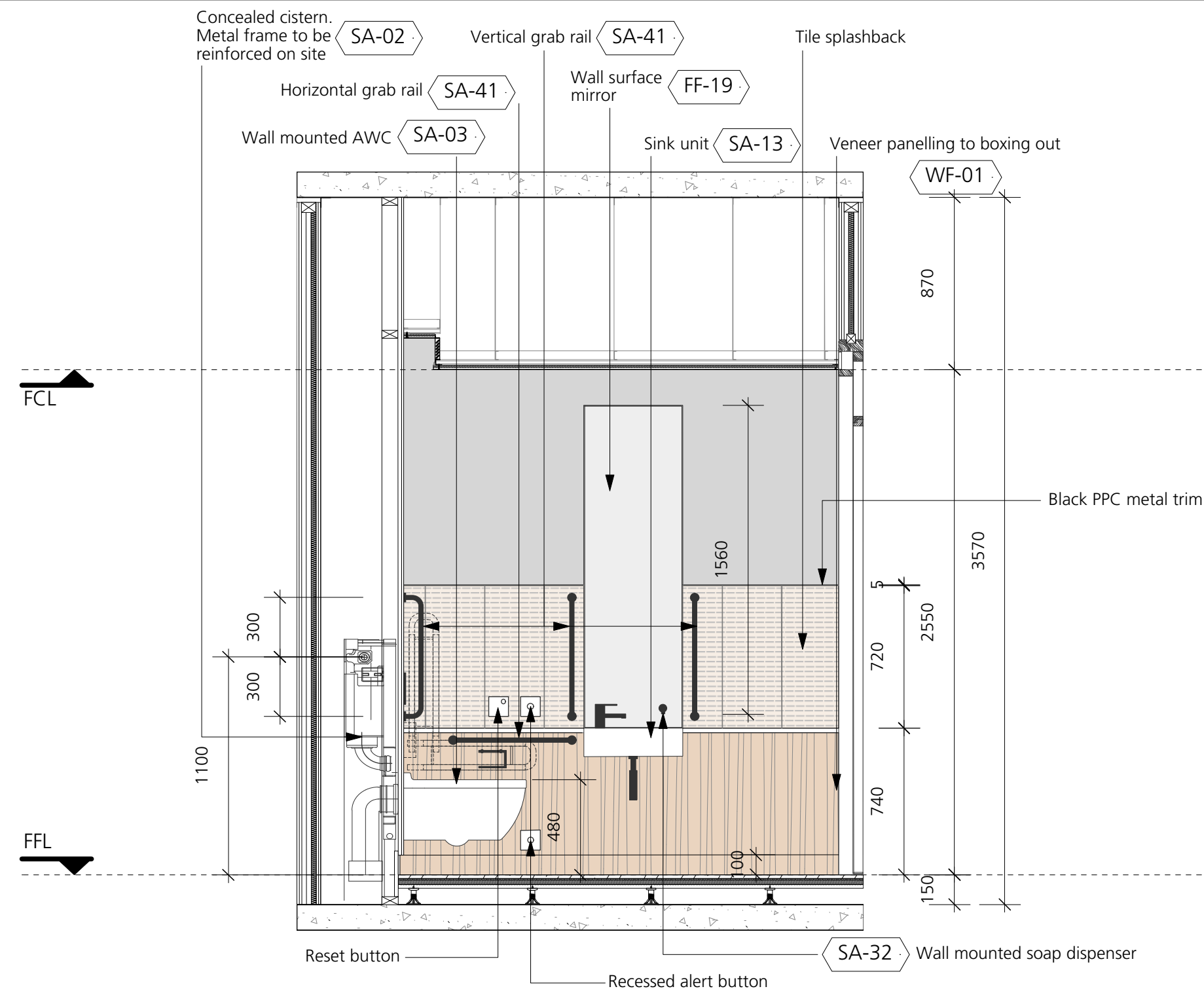


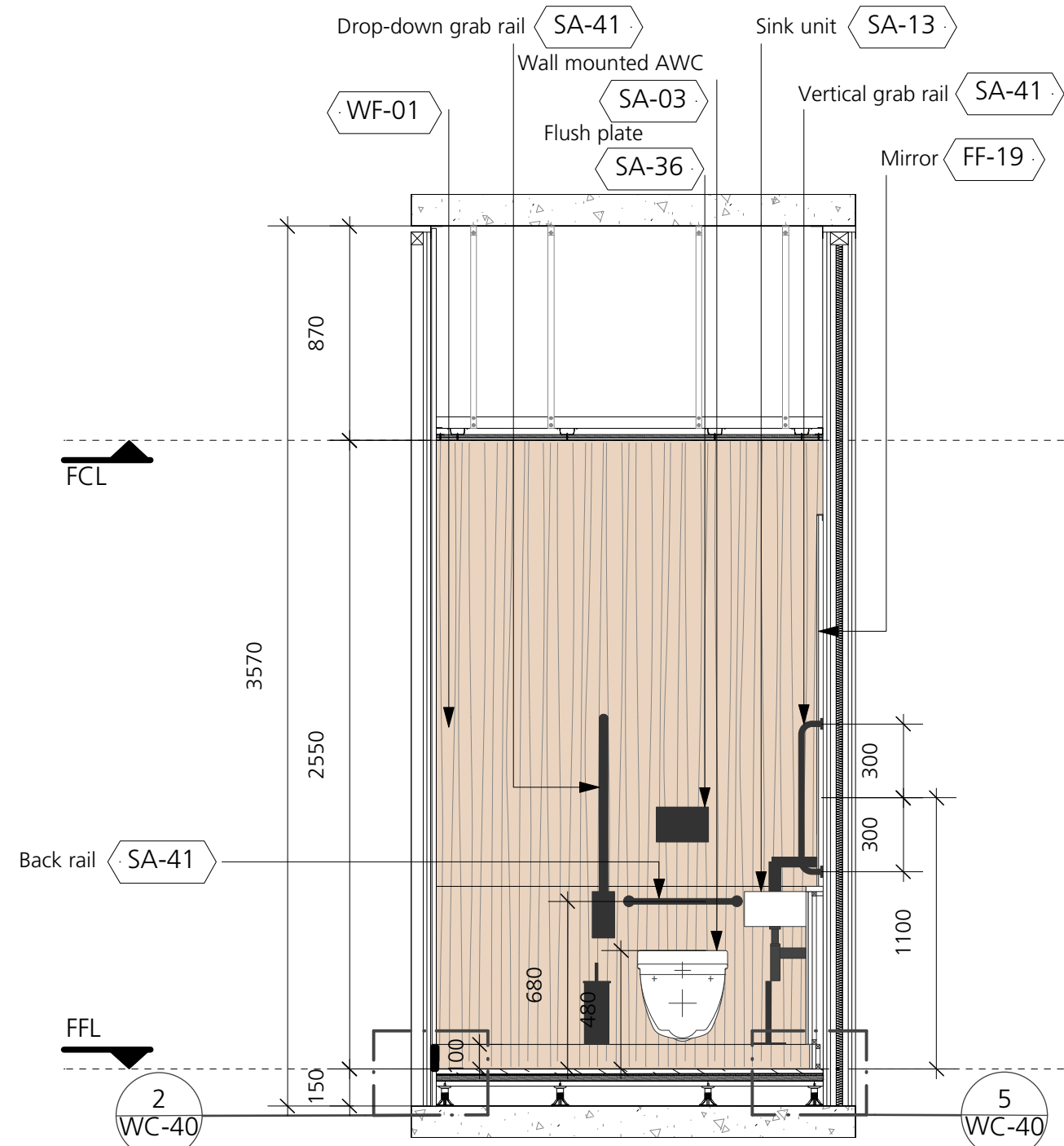
1 Proposed Accessible Toilet - Layout  
Scale: 1:25



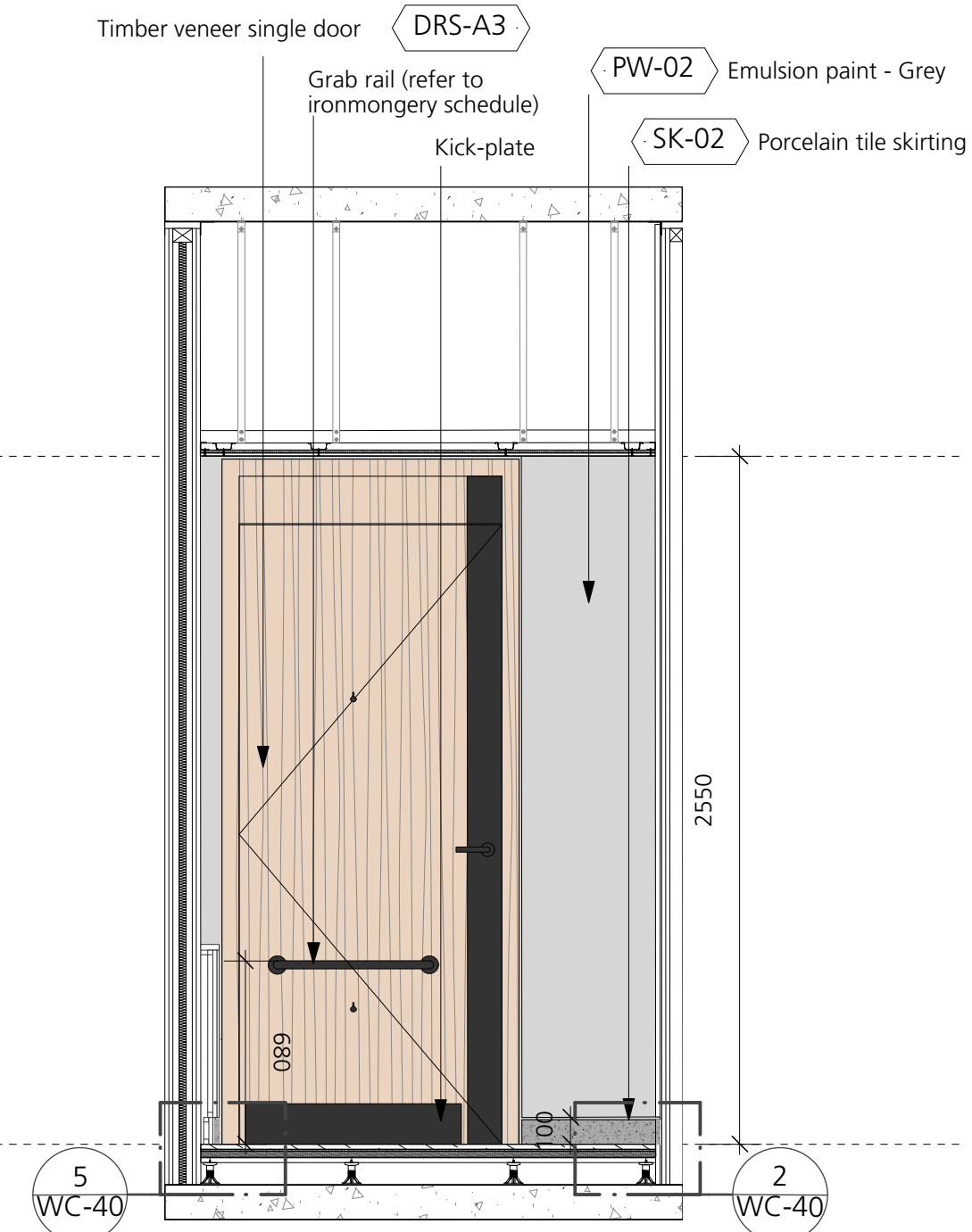
2 Proposed Accessible Toilet - RCP  
Scale: 1:25



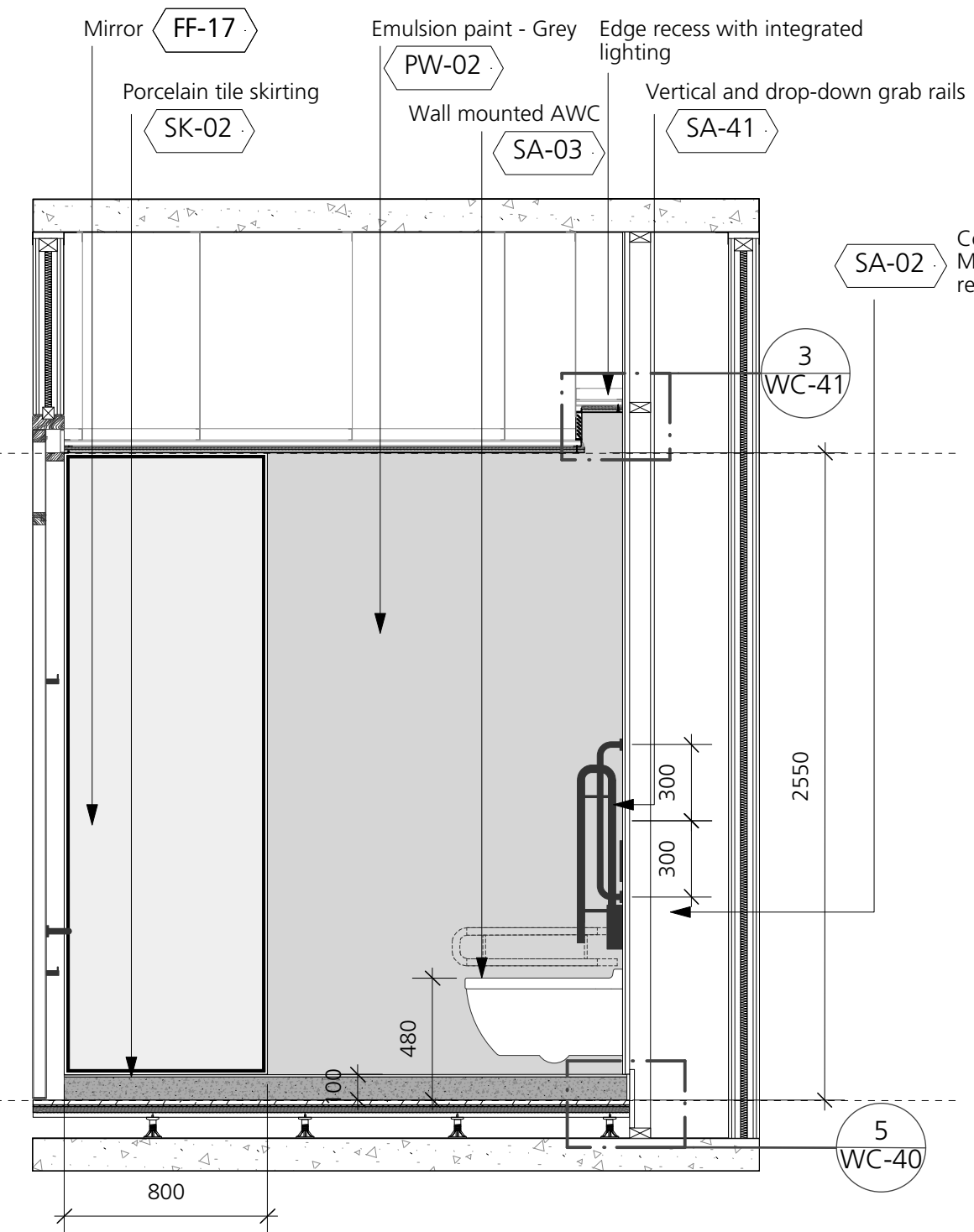
3 Proposed Accessible Toilet - Internal Elevation AA  
Scale: 1:25



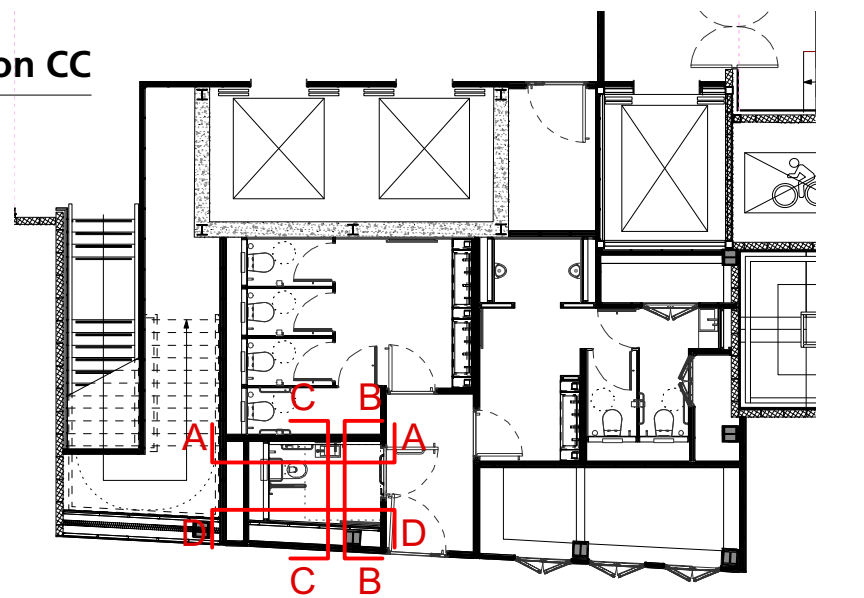
5 Proposed Accessible Toilet - Internal Elevation DD  
Scale: 1:25



4 Proposed Accessible Toilet - Internal Elevation BB  
Scale: 1:25



6 Proposed Accessible Toilet - Internal Elevation CC  
Scale: 1:25



DRAWING NOTES:

All dimensions to be checked on site prior to commencement of any works, and/or preparation of any shop drawings.

Sizes of and dimensions to any structural elements are indicative only. See structural engineers drawings for actual sizes/dimensions.

Sizes of and dimensions to any service elements are indicative only. See service engineers drawings for actual sizes and dimensions.

This drawing to be read in conjunction with all other Architect's drawings, specifications and other Consultants' information.

All proprietary systems shown on this drawing are to be installed strictly in accordance with the Manufacturers/Suppliers recommended details.

Any discrepancies between information shown on this drawing and any other contract information or manufacturers/suppliers recommendations is to be brought to the attention of the Architect.

DO NOT SCALE FROM THIS DRAWING.

DRAWING NOTES:

Core and EOT lighting:

- LED strip lighting
- Recessed linear luminaire
- LED recessed downlight
- LED surface-mounted wall luminaire
- LED surface-mounted wall luminaire

Other services (refer to MEP information):

- Passive infrared sensor (PIR)
- Ceiling mounted speaker
- Combined optical multihead smoke detector
- Combined optical smoke detector and beacon
- VAD Beacon
- Daylight Sensor
- Sprinkler Head
- Exit Sign
- Linear air grille

T3  
T2  
T1

REVISED STAGE 4 ISSUE  
REVISED STAGE 4 ISSUE  
STAGE 4 ISSUE

STATUS

REVISION

07/08/19  
14/06/19  
04/06/19

DATE

DRAWING

Ground floor accessible toilet

SCALE 1:50 @ A1  
(100 @ A3)

DATE May 2019

DWG No. 1069\_WC-13

DRAWING STATUS STAGE 4

REVISION T3

Information contained on this drawing is the sole copyright of Buckley Gray Yeoman and is not to be reproduced without their permission.

Buckley Gray Yeoman

Studio 4.04 The Tea Building 56 Shoreditch High Street  
London E1 6JJ T: 020 7033 9913 F: 020 7033 9914

CLIENT 25 Cannon Street Limited

PROJECT 25 Cannon Street, EC4M