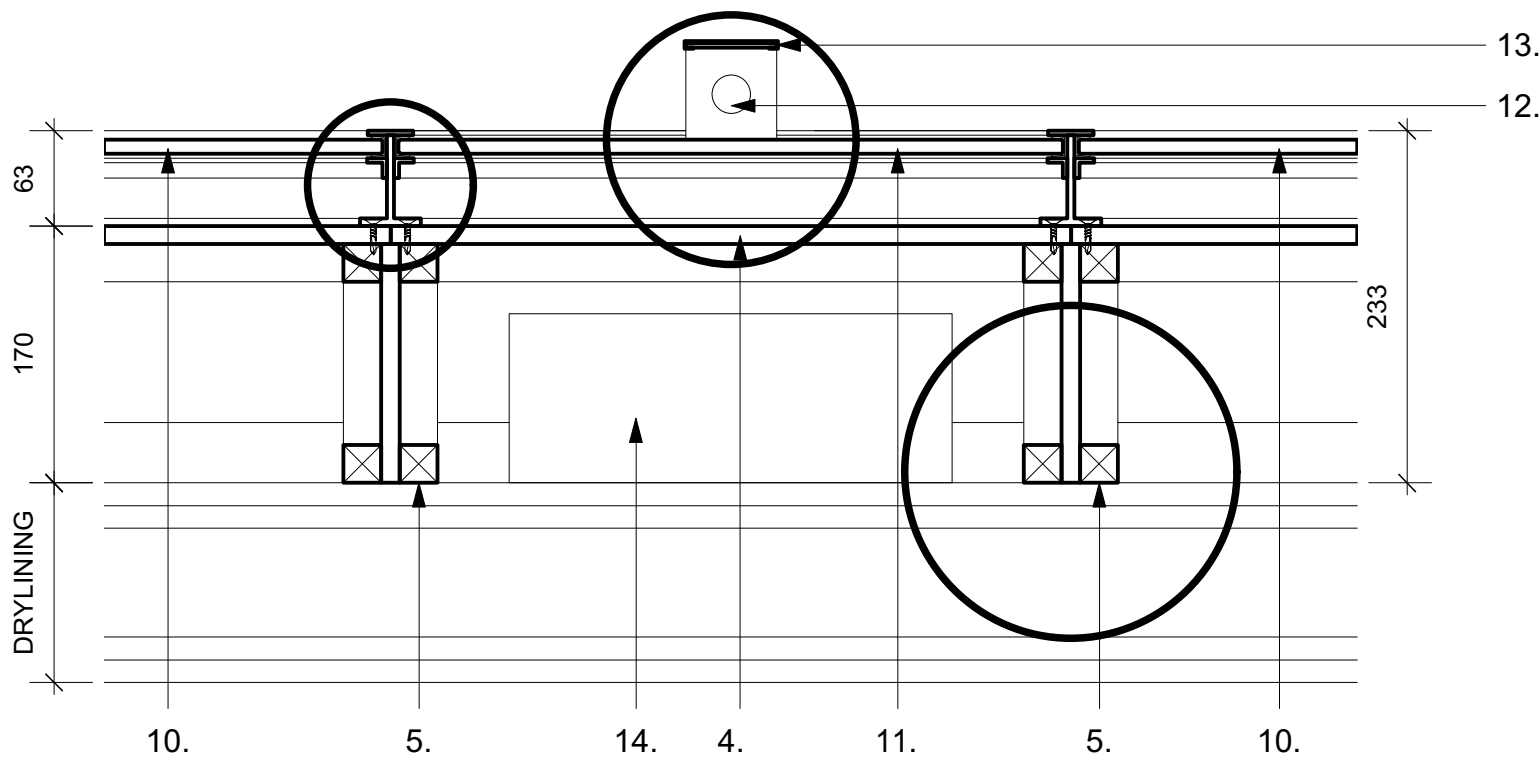
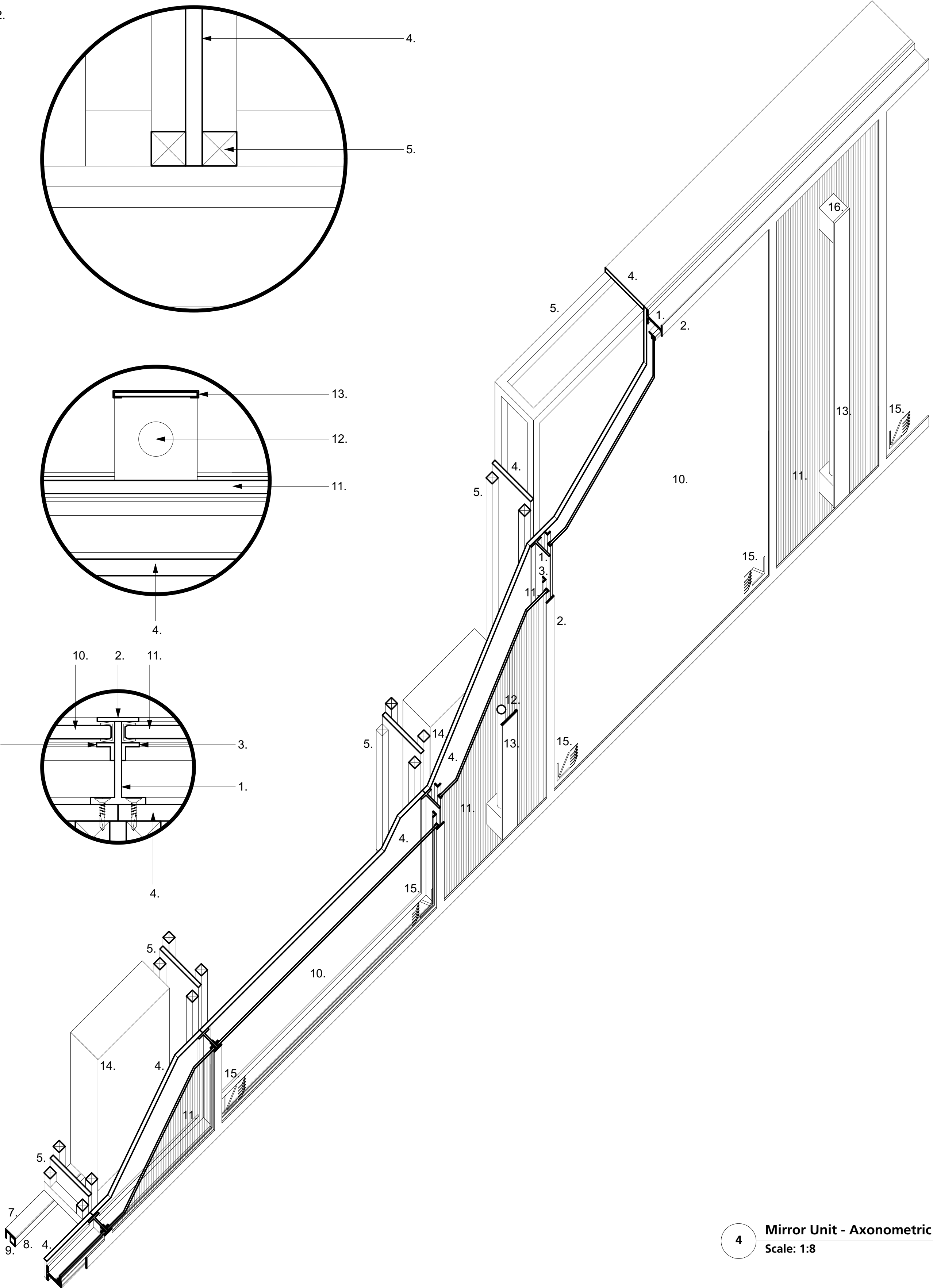
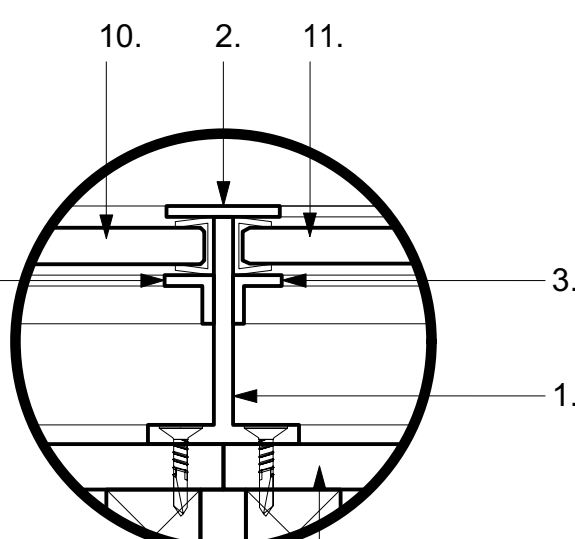
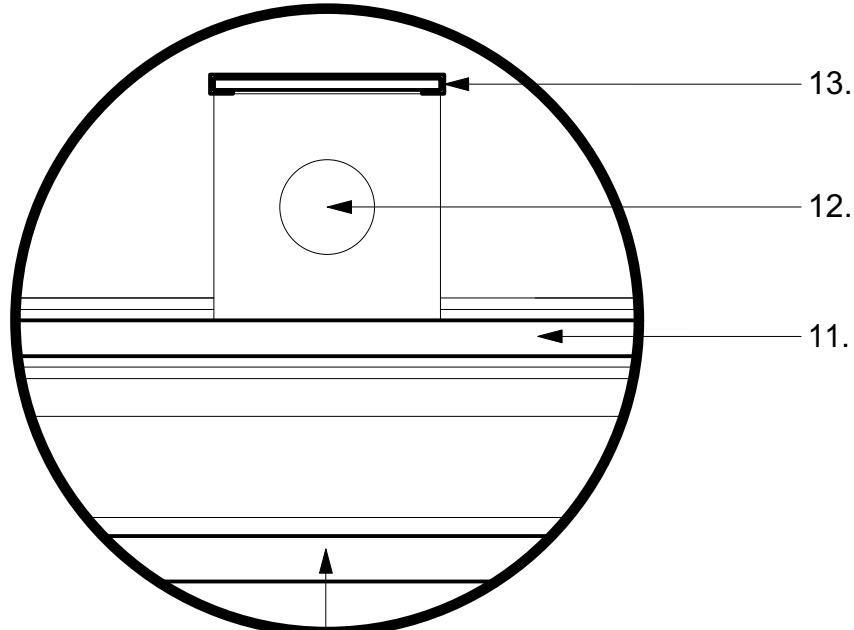
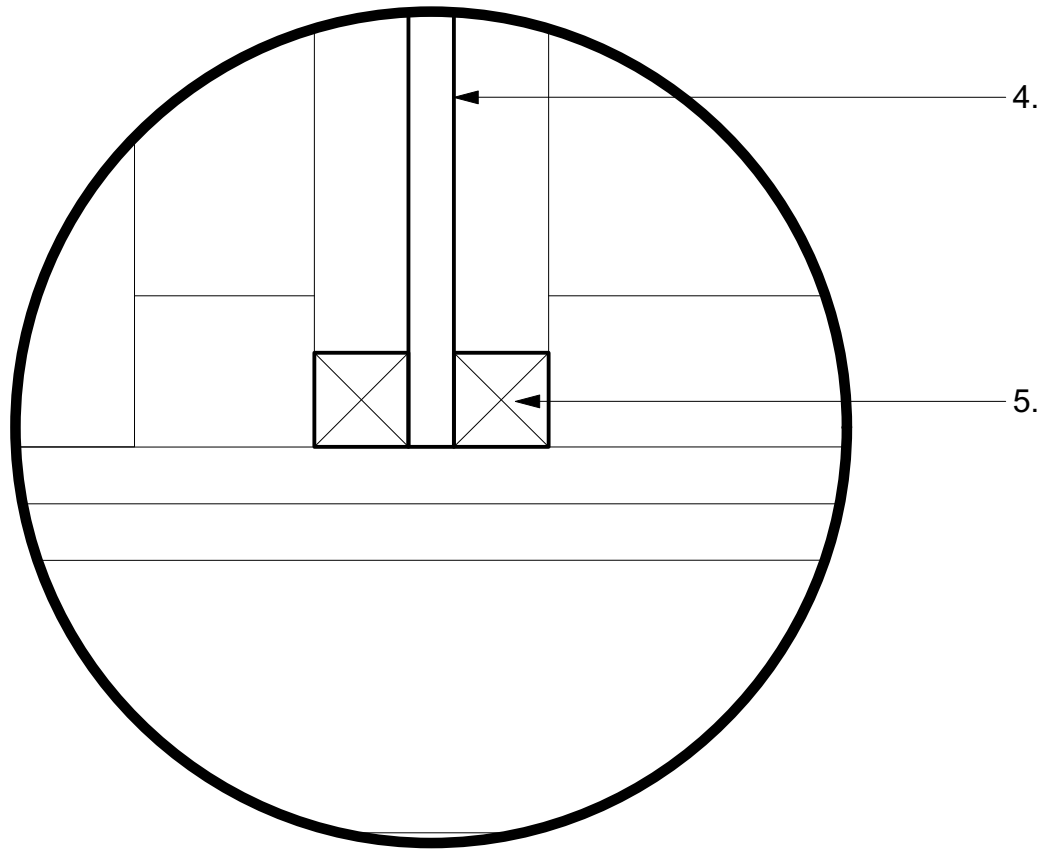


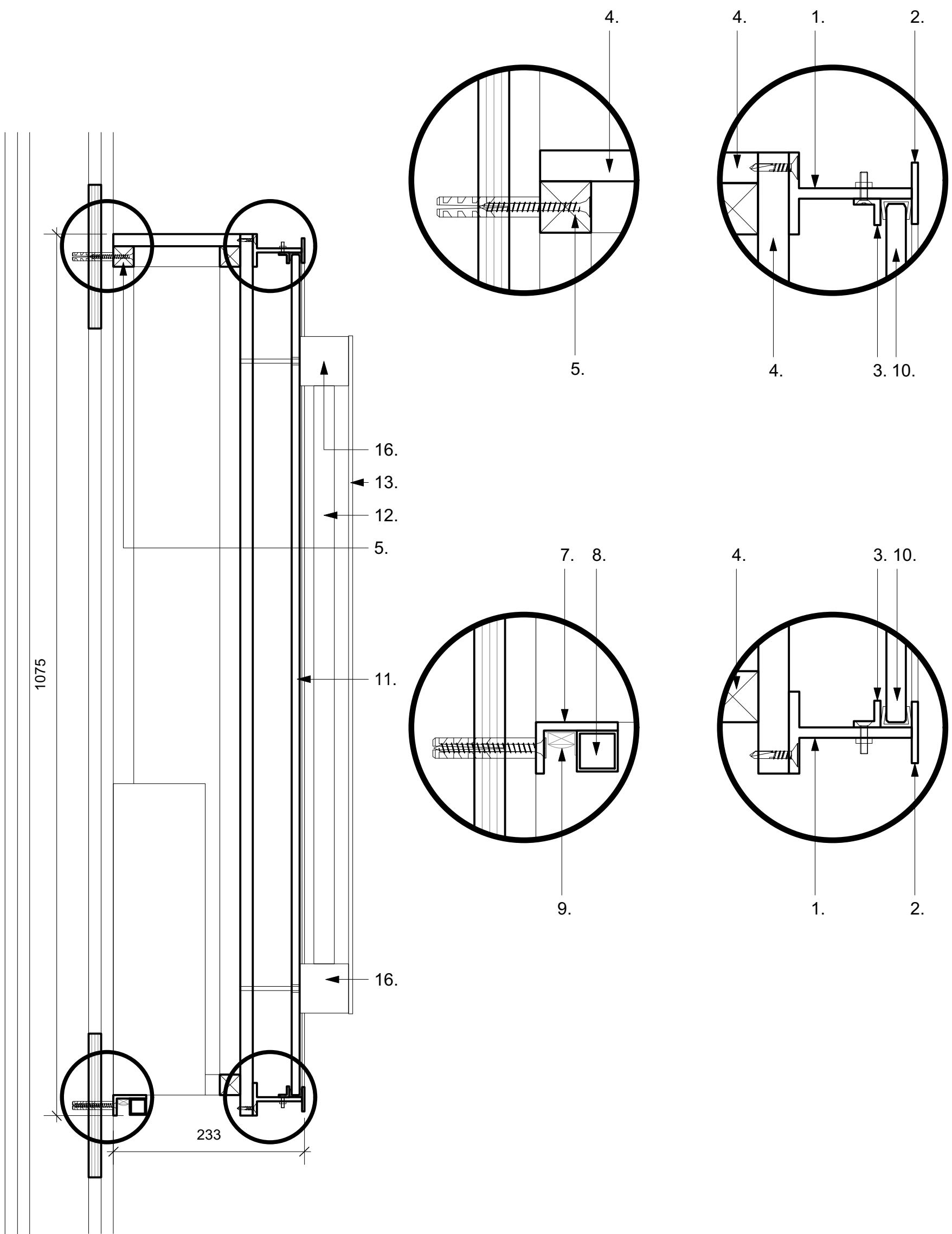
- 1. Black Powder Coated Stainless Steel Unequal Tee Section - 40x60x4MM
- 2. Black Powder Coated Stainless Steel Flat Bar - 30x3MM, welded to Tee Section
- 3. Black Powder Coated Metric Stainless Steel Equal Angle - 13x13x3MM, tapped & screwed to Tee Section
- 4. Timber box
- 5. Fixing to partition wall. Allow for plywood patresses within drylining partition walls
- 7. Black Powder Coated Metric Stainless Steel Unequal Angle - 40x25x4MM, fixed to wall
- 8. Black Powder Coated Stainless Steel Equal Box Section - 20x20x2MM, tapped & screwed to Angle
- 9. Integrated linear lighting
- 10. Mirror Sheet - 6MM
- 11. Fluted Glass Sheet with Mirror Back - 9.5MM (profile To Be Confirmed)
- 12. Tubular Light
- 13. Champagne Rimex Wrapped Stainless Steel Flat Bar - 60x3MM
- 14. Behind Mirror Dropdown Paper Towel Dispenser
- 15. Backlit signage engraved in mirror sheet
- 16. Black Powder Coated Light Fitting, fixed to Timber box



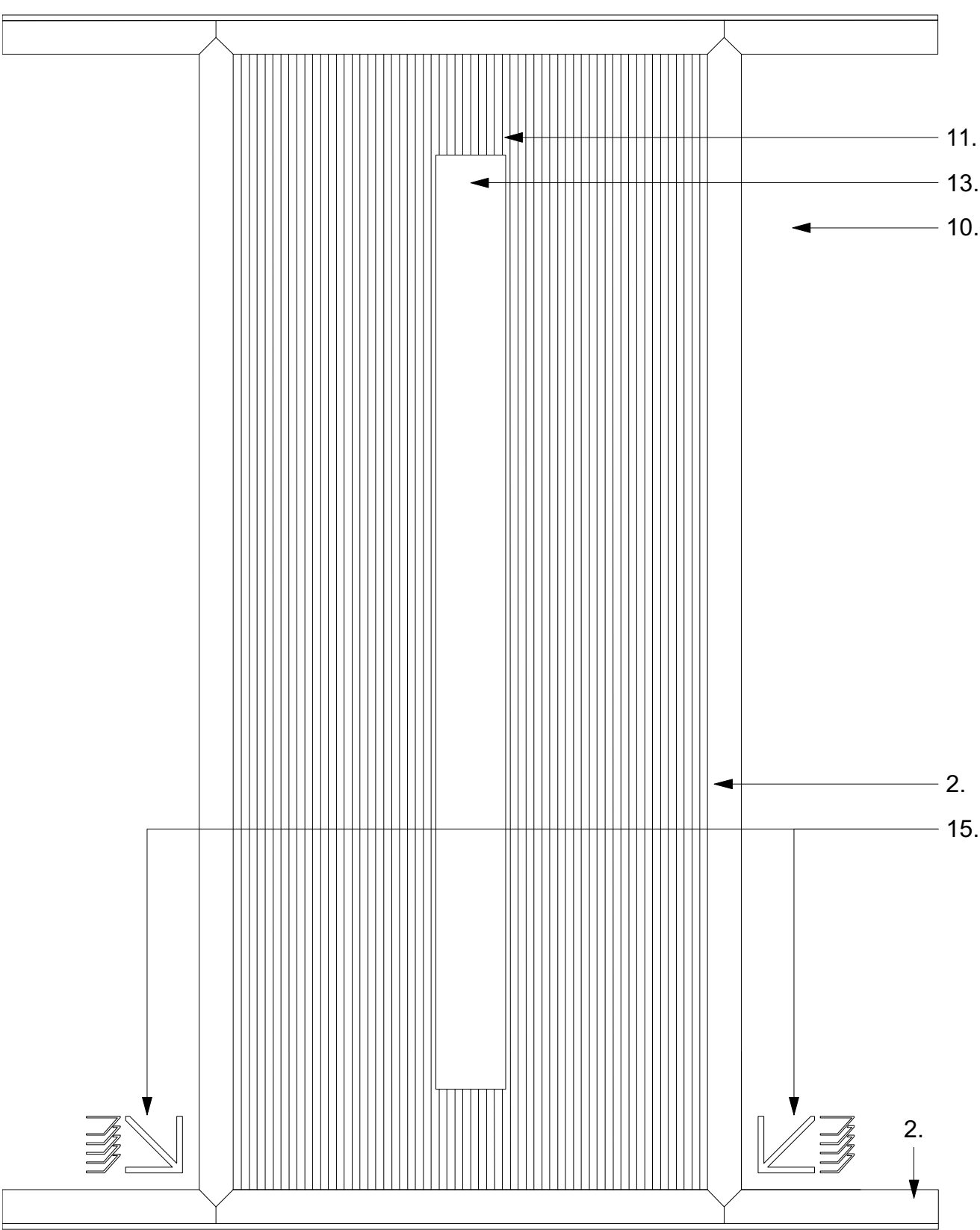
3 Mirror Unit - Typical Plan  
Scale: 1:5



4 Mirror Unit - Axonometric View  
Scale: 1:8



1 Mirror Unit - Typical Section  
Scale: 1:5



2 Mirror Unit - Typical Elevation  
Scale: 1:5

DRAWING NOTES:  
All dimensions to be checked on site prior to commencement of any works, and/or preparation of any shop drawings.  
Sizes of and dimensions to any structural elements are indicative only. See structural engineers drawings for actual sizes/dimensions.  
Sizes of and dimensions to any service elements are indicative only. See service engineers drawings for actual sizes and dimensions.  
This drawing to be read in conjunction with all other Architect's drawings, specifications and other Consultants' information.  
All proprietary systems shown on this drawing are to be installed strictly in accordance with the Manufacturers/Suppliers recommended details.  
Any discrepancies between information shown on this drawing and any other contract information or manufacturers/suppliers recommendations is to be brought to the attention of the Architect.  
DO NOT SCALE FROM THIS DRAWING.

DRAWING NOTES:

T1	STAGE 4 ISSUE	04/06/19	DRAWING Mirror Unit		Buckley Gray Yeoman Studio 4.04 The Tea Building 56 Shoreditch High Street London E1 6JJ T: 020 7033 9913 F: 020 7033 9914
			SCALE 1:10 @ A1 (1:20 @ A3)	DRAWING FILE REF 1069-A-x-D-xx-WC	
			DATE May 2019	DRAWN BY CG	
			DWG No. 1069_WC-20	REVISION T1	CLIENT 25 Cannon Street Limited
			DRAWING STATUS STAGE 4		PROJECT 25 Cannon Street, EC4M
STATUS	REVISION	DATE	Information contained on this drawing is the sole copyright of Buckley Gray Yeoman and is not to be reproduced without their permission.		