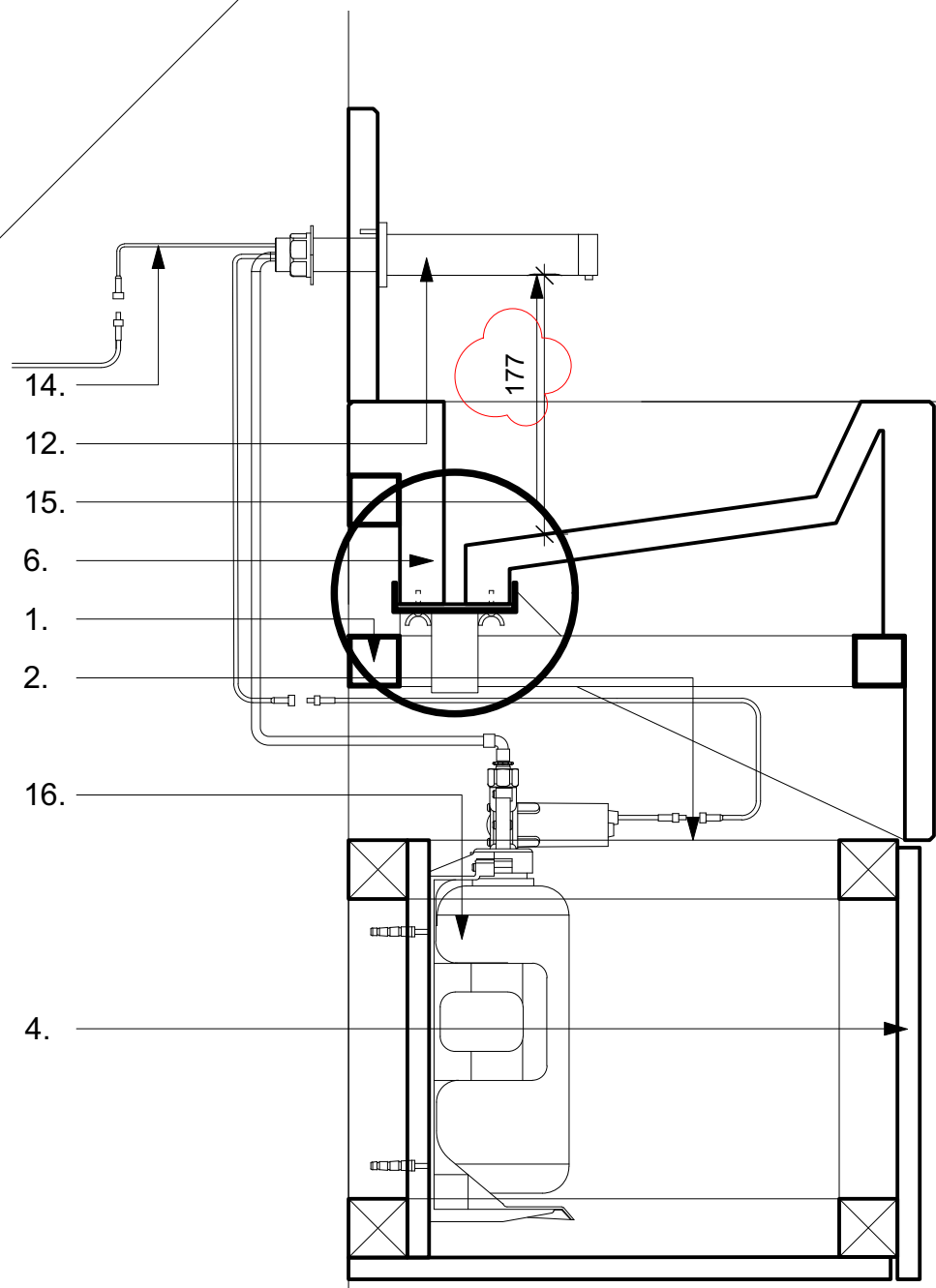


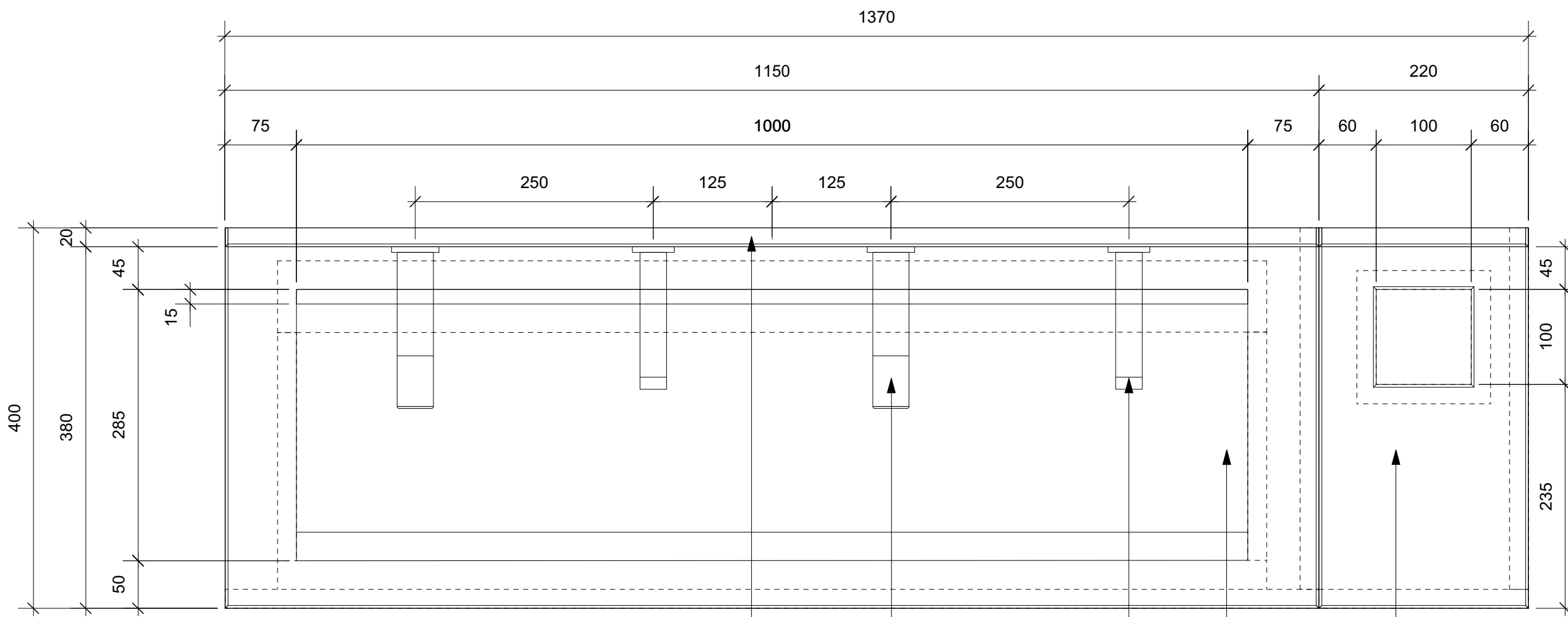
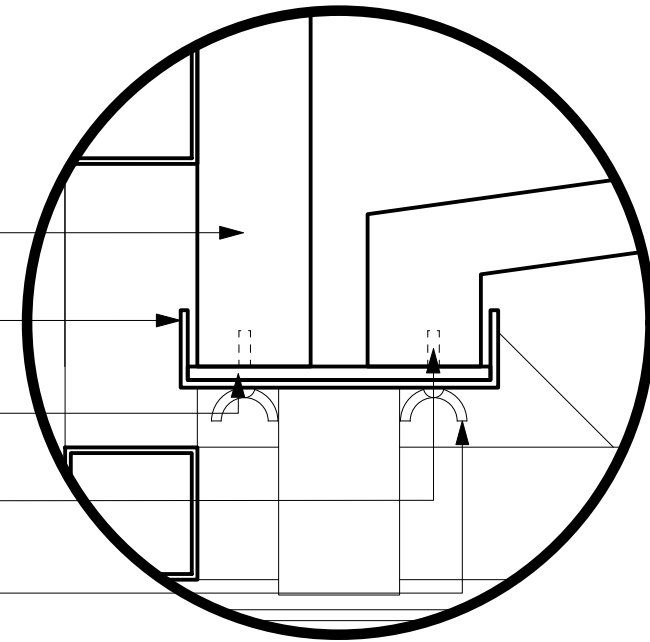
4 Mirror Unit - Axonometric View
Scale: 1:8

1. Metal frame fixed to wall to support for pre-casted sink unit
2. Timber frame to form under vanity unity
3. Timber drawer with push-to-open opening mechanism
4. Front timber veneered panels to match WC cubicle system
5. Pre-casted splash-back with perforations for taps and soap dispensers where required. Finish to match sink unit finish.
6. Pre-casted sink unit. Finish to be confirmed. 5MM radius around basin. 3x3MM chamfer along edges except basin.
7. Pre-casted unit with opening for paper towel disposal

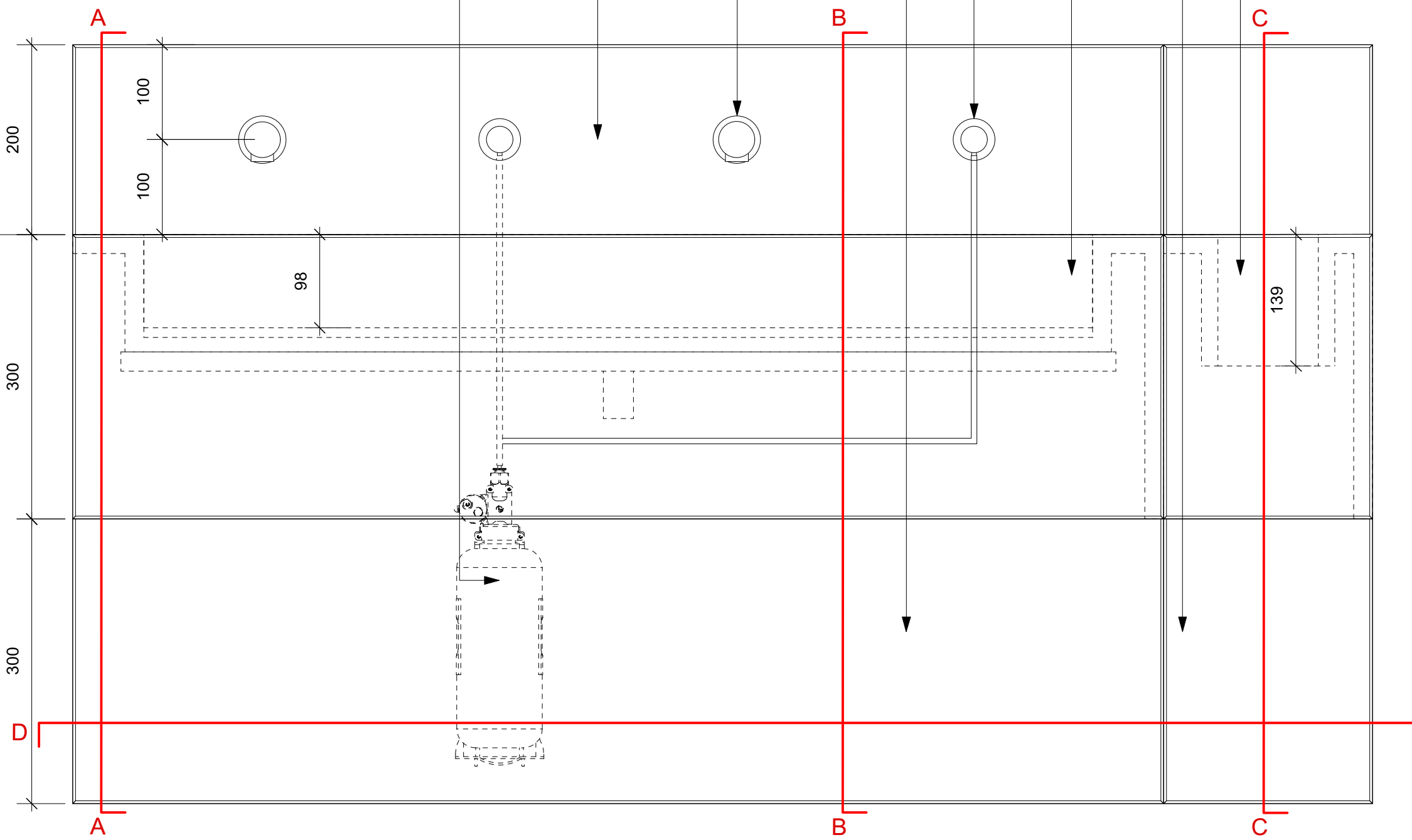
8. Waterproof membrane 3.5MM EPDM
9. Stainless steel tray
10. M4 stud fixing cast into concrete
11. Washer and wingnut onto M4 threaded rod
12. Panel mounted infrared soap dispenser
13. Panel mounted electronic infrared tap
14. Power source
15. Sensor
16. Soap deposit connected to soap dispensers. Location to be confirmed.



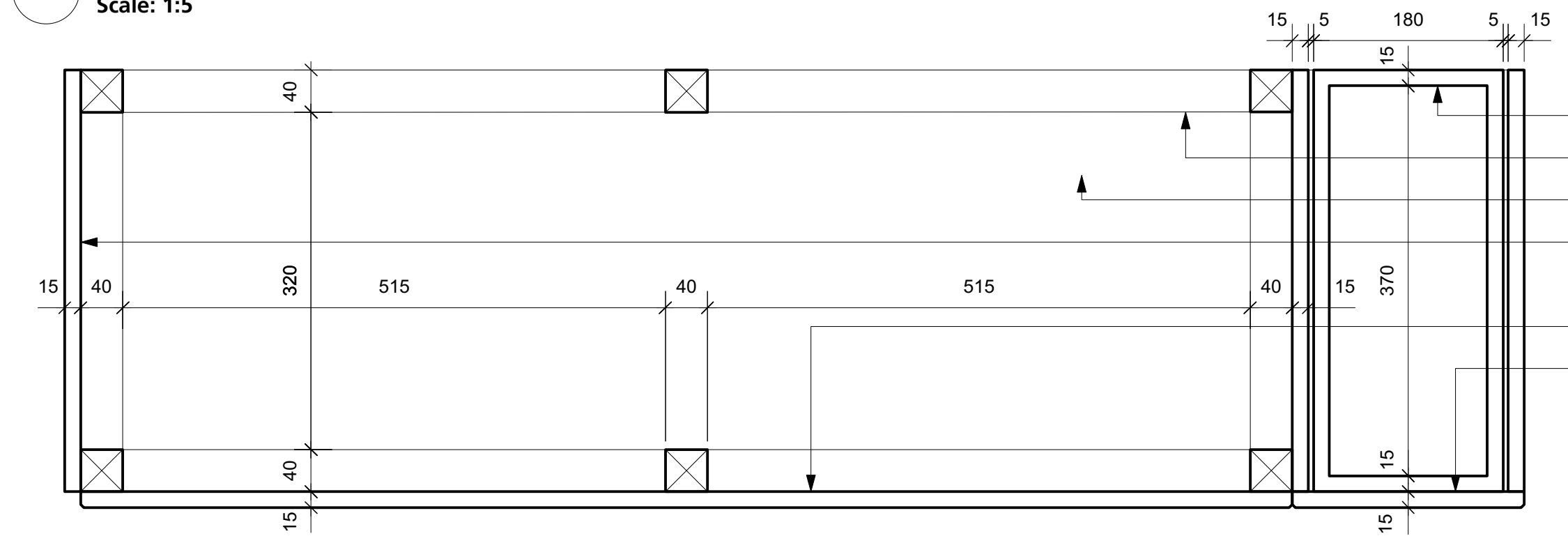
B Vanity Unit - Section BB
Scale: 1:5



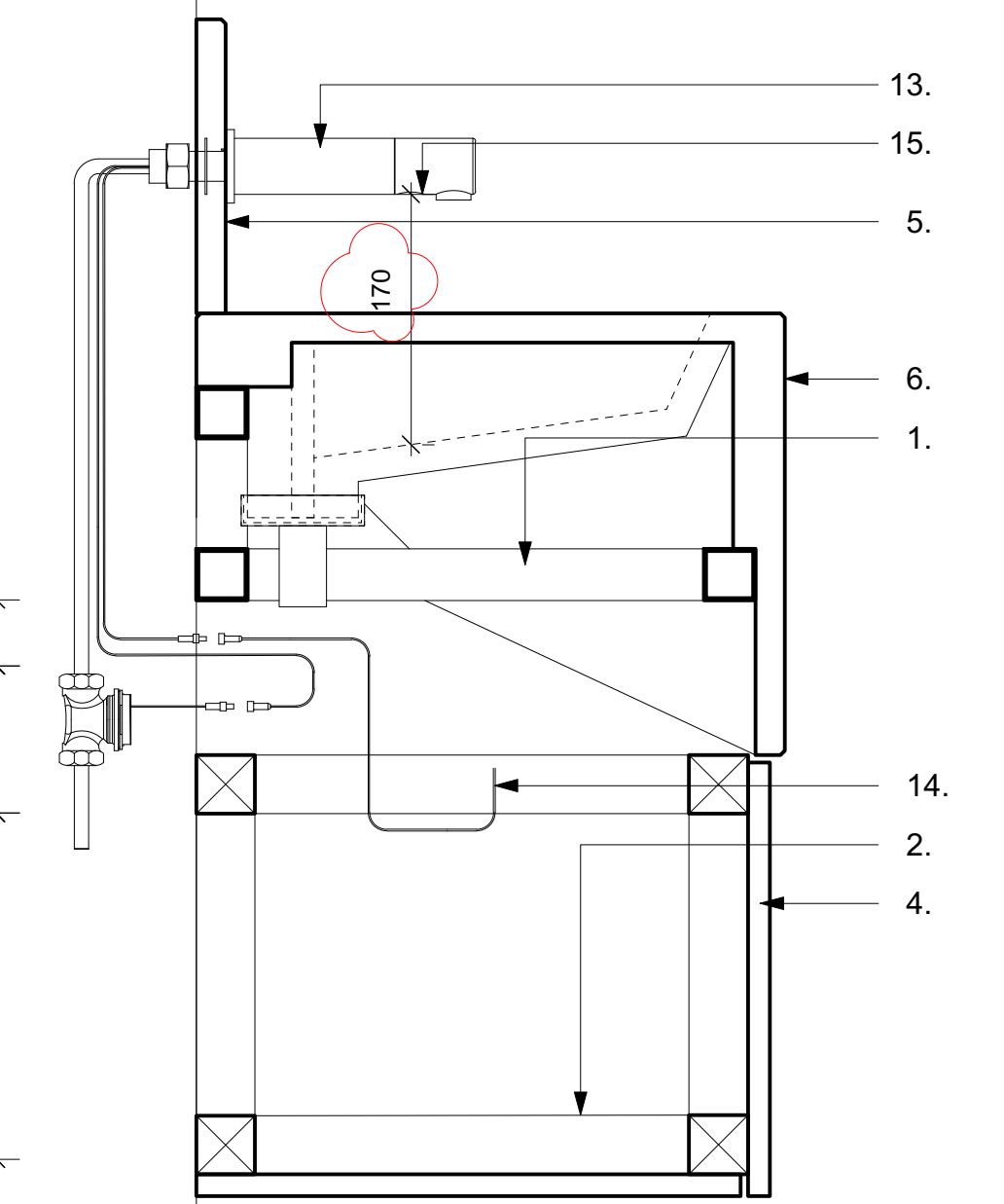
1 Vanity Unit - Typical Plan
Scale: 1:5



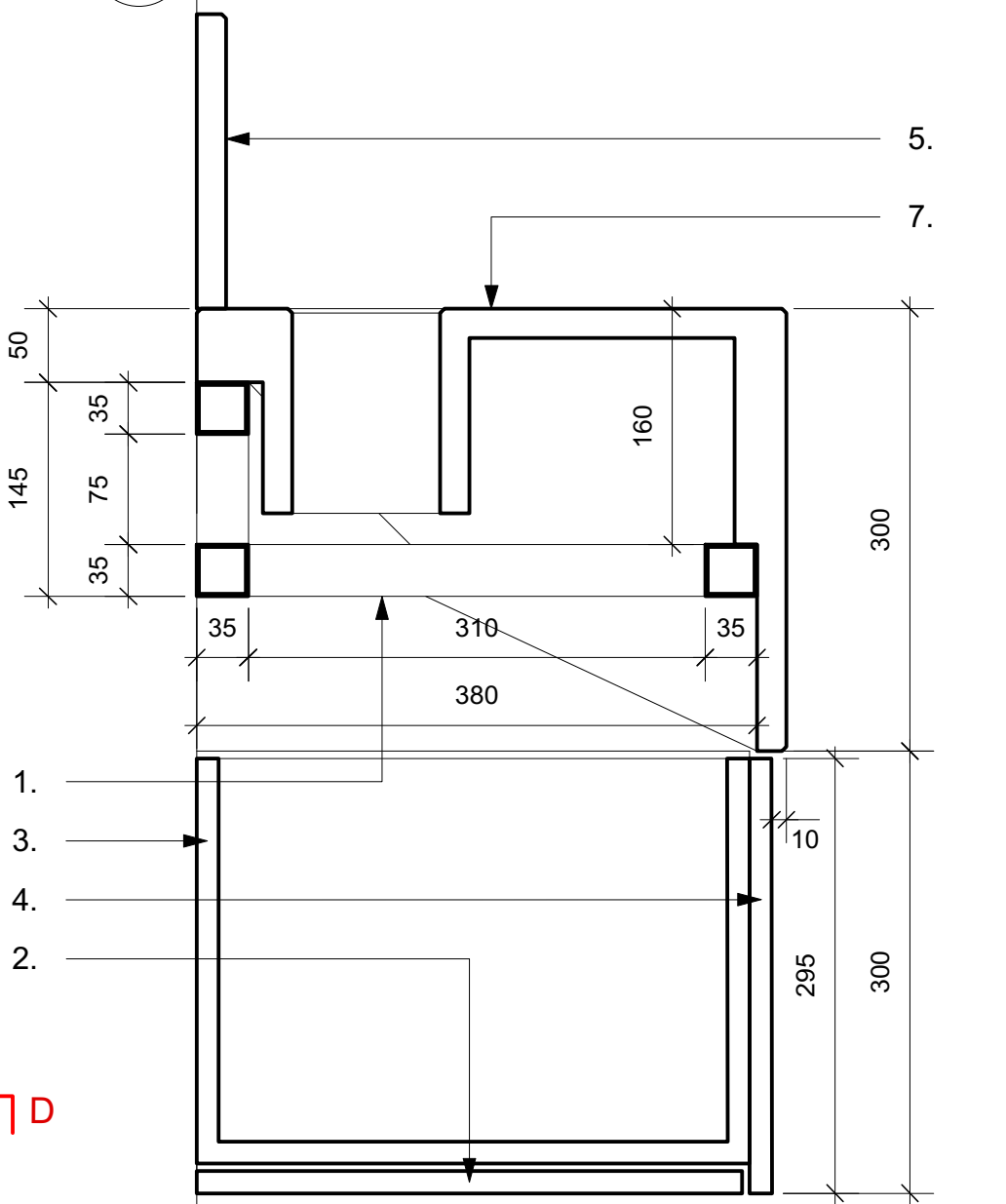
2 Vanity Unit - Typical Elevation
Scale: 1:5



3 Vanity Unit - Plan section through veneer unit - Section DD
Scale: 1:5



A Vanity Unit - Section AA
Scale: 1:5



C Vanity Unit - Section CC
Scale: 1:5

DRAWING NOTES:
All dimensions to be checked on site prior to commencement of any works, and/or preparation of any shop drawings.
Sizes of and dimensions to any structural elements are indicative only. See structural engineers drawings for actual sizes/dimensions.
Sizes of and dimensions to any service elements are indicative only. See service engineers drawings for actual sizes and dimensions.
This drawing to be read in conjunction with all other Architect's drawings, specifications and other Consultants' information.
All proprietary systems shown on this drawing are to be installed strictly in accordance with the Manufacturers/Suppliers recommended details.
Any discrepancies between information shown on this drawing and any other contract information or manufacturers/suppliers recommendations is to be brought to the attention of the Architect.
DO NOT SCALE FROM THIS DRAWING.

DRAWING NOTES:

T2
T1
STATUS
REVISION

REVISED STAGE 4 ISSUE
STAGE 4 ISSUE

14/06/19
04/06/19
DATE

DRAWING
Vanity Unit
SCALE 1:10 @ A1
(1:20 @ A3)
DATE May 2019
DWG No. 1069_WC-30
DRAWING STATUS STAGE 4
DRAWING FILE REF 1069-A-x-D-xx-WC
DRAWN BY CG
REVISION T2
Information contained on this drawing is the sole copyright of Buckley Gray Yeoman and is not to be reproduced without their permission.

Buckley Gray Yeoman
Studio 4.04 The Tea Building 56 Shoreditch High Street
London E1 6JJ T: 020 7033 9913 F: 020 7033 9914
CLIENT 25 Cannon Street Limited
PROJECT 25 Cannon Street, EC4M