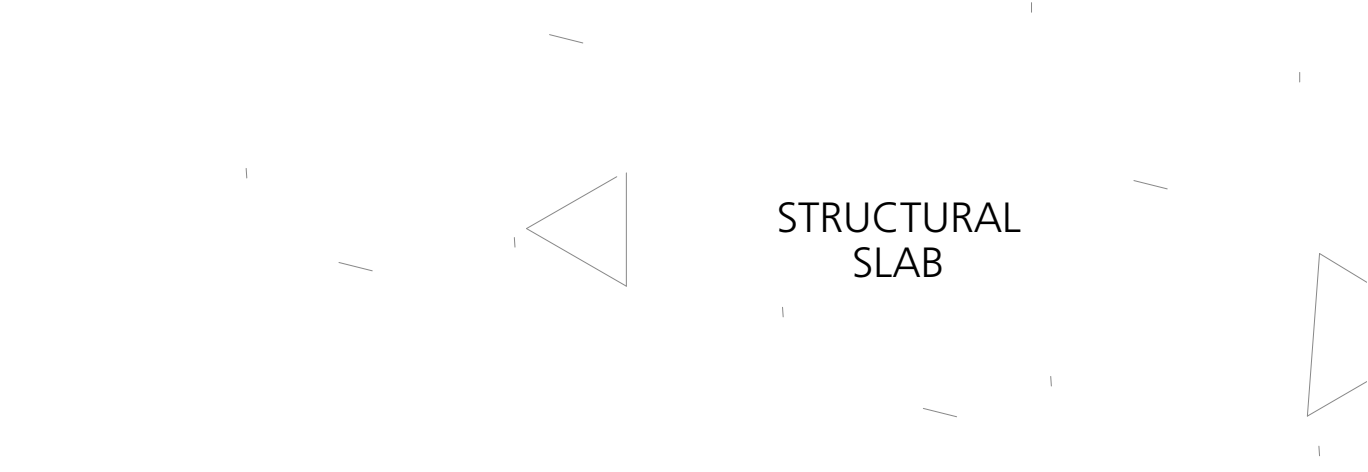
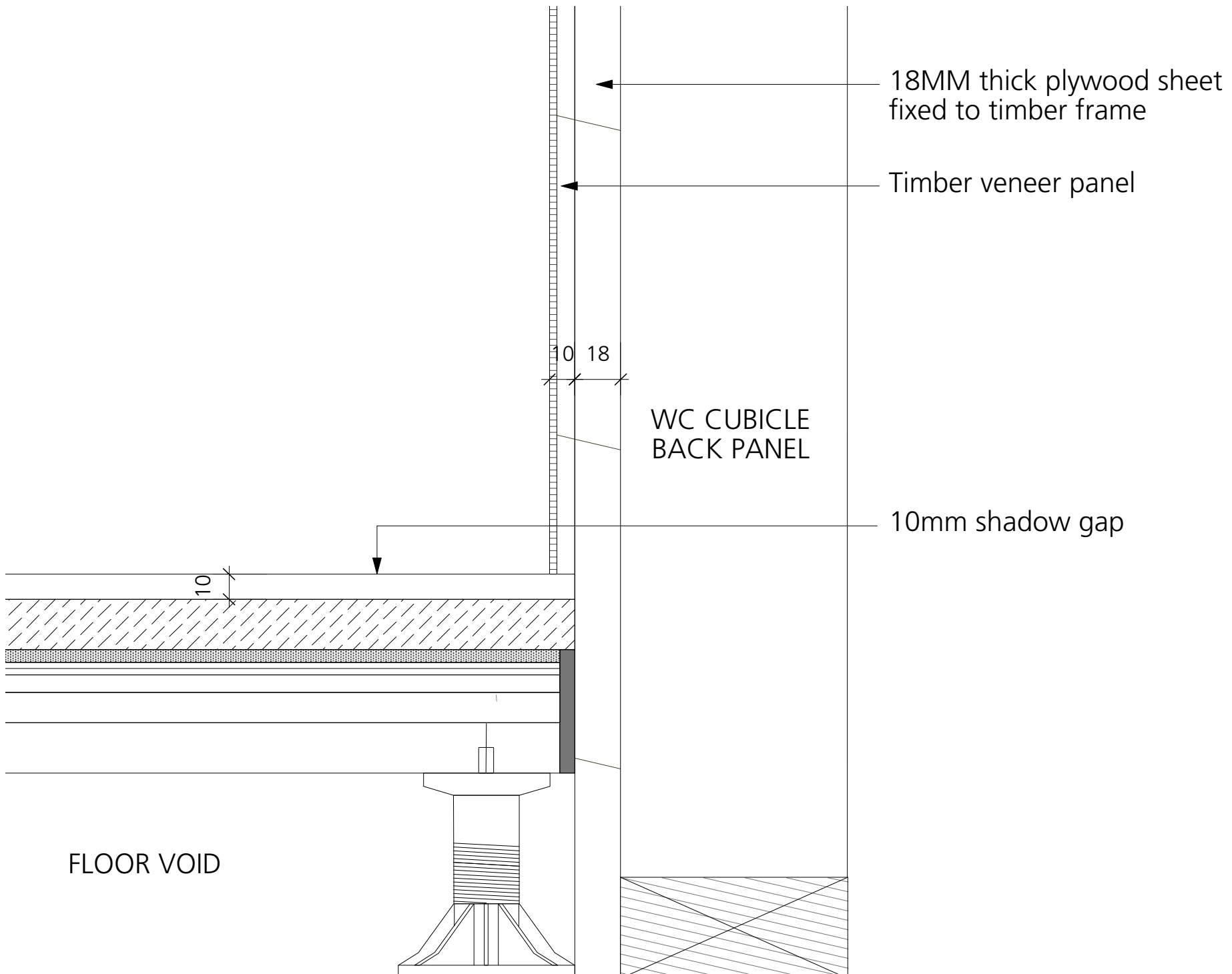


3 Recessed ceiling slot - Timber veneer backing panel
Scale: 1:2



4 Timber veneer / Tiled floor interface
Scale: 1:2

DRAWING NOTES:

All dimensions to be checked on site prior to commencement of any works, and/or preparation of any shop drawings.

Sizes of and dimensions to any structural elements are indicative only. See structural engineers drawings for actual sizes/dimensions.

Sizes of and dimensions to any service elements are indicative only. See service engineers drawings for actual sizes and dimensions.

This drawing to be read in conjunction with all other Architect's drawings, specifications and other Consultants' information.

All proprietary systems shown on this drawing are to be installed strictly in accordance with the Manufacturers/Suppliers recommended details.

Any discrepancies between information shown on this drawing and any other contract information or manufacturers/suppliers recommendations is to be brought to the attention of the Architect.

DO NOT SCALE FROM THIS DRAWING.

DRAWING NOTES:

T2 T1	REVISED STAGE 4 ISSUE STAGE 4 ISSUE	14/06/19 04/06/19	DRAWING Cubicle Generic Details		Buckley Gray Yeoman Studio 4.04 The Tea Building 56 Shoreditch High Street London E1 6JJ T: 020 7033 9913 F: 020 7033 9914
			SCALE 1:10 @ A1 (1:20 @ A3)	DRAWING FILE REF 1069-A-x-D-xx-WC	
			DATE May 2019	DRAWN BY CG	
			DWG No. 1069_WC-41	REVISION T2	CLIENT 25 Cannon Street Limited
			DRAWING STATUS STAGE 4		PROJECT 25 Cannon Street, EC4M
STATUS	REVISION	DATE	Information contained on this drawing is the sole copyright of Buckley Gray Yeoman and is not to be reproduced without their permission.		