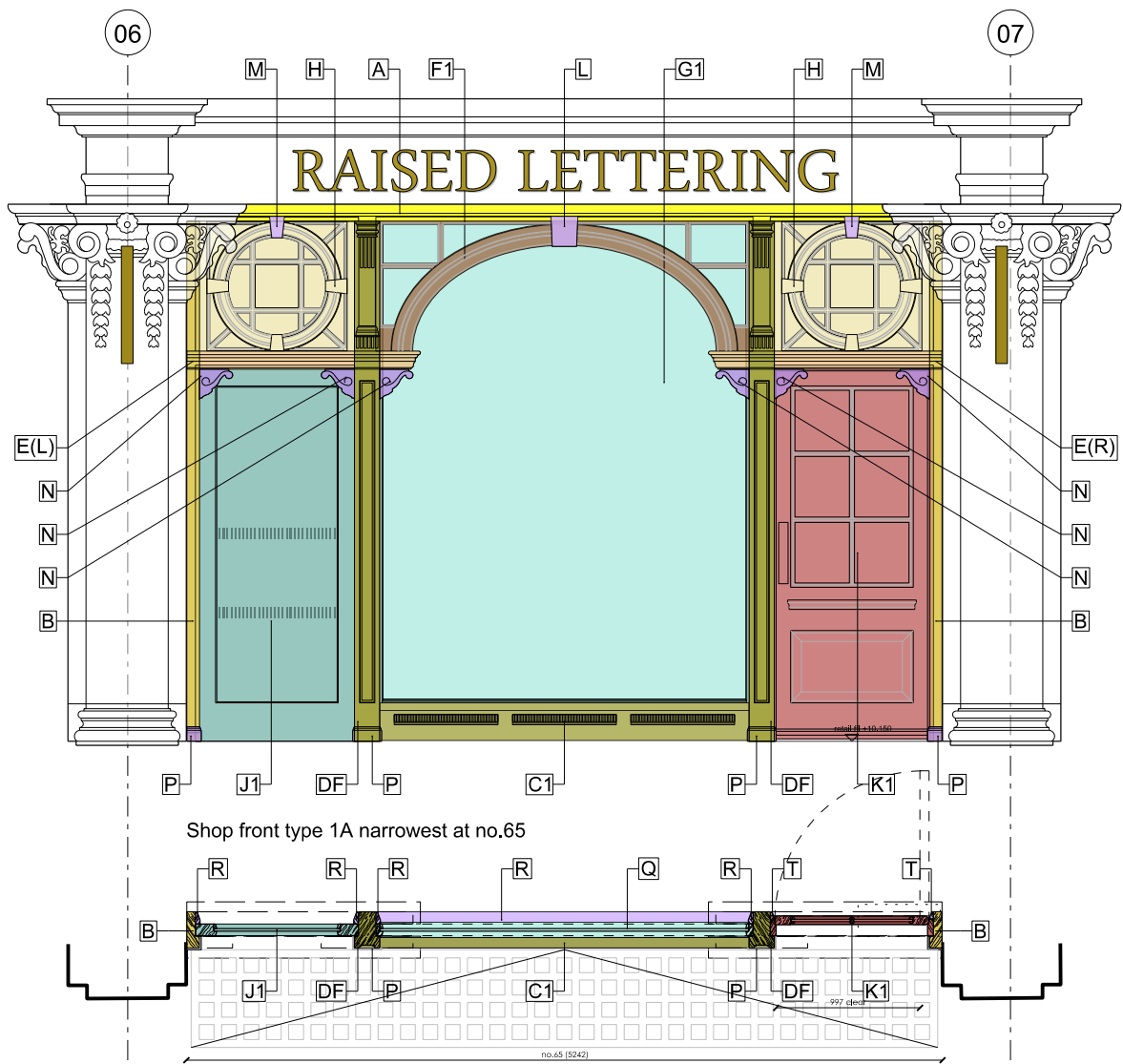
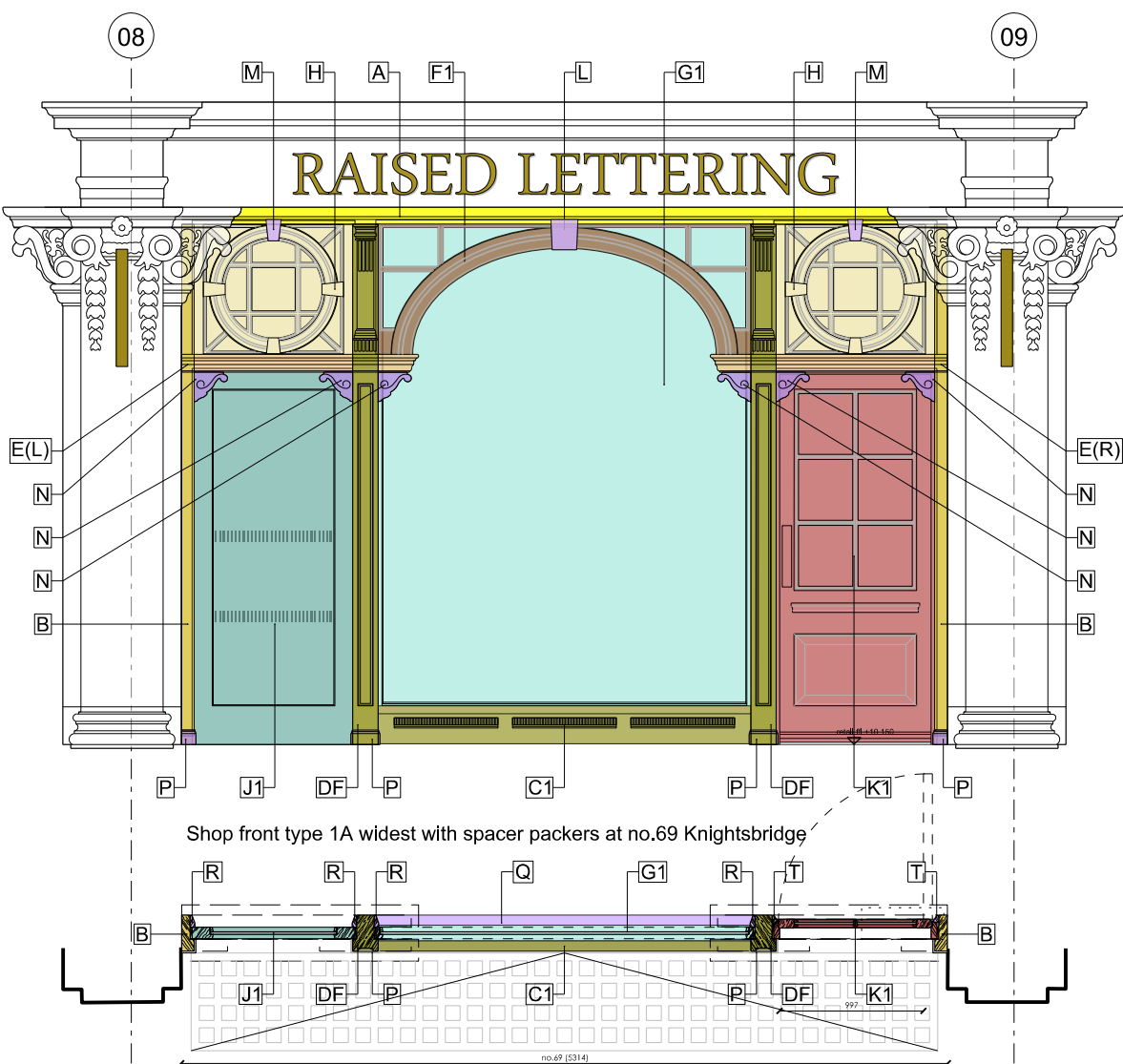


Shopfront type	1A	1B	2	3	4	5A	5B
FFL	+10.150	+10.067	+10.150	+10.197	+10.197	+10.030	+10.197
Quantity	7	4	1	2	1	1	1

DO NOT SCALE FROM THIS DRAWING

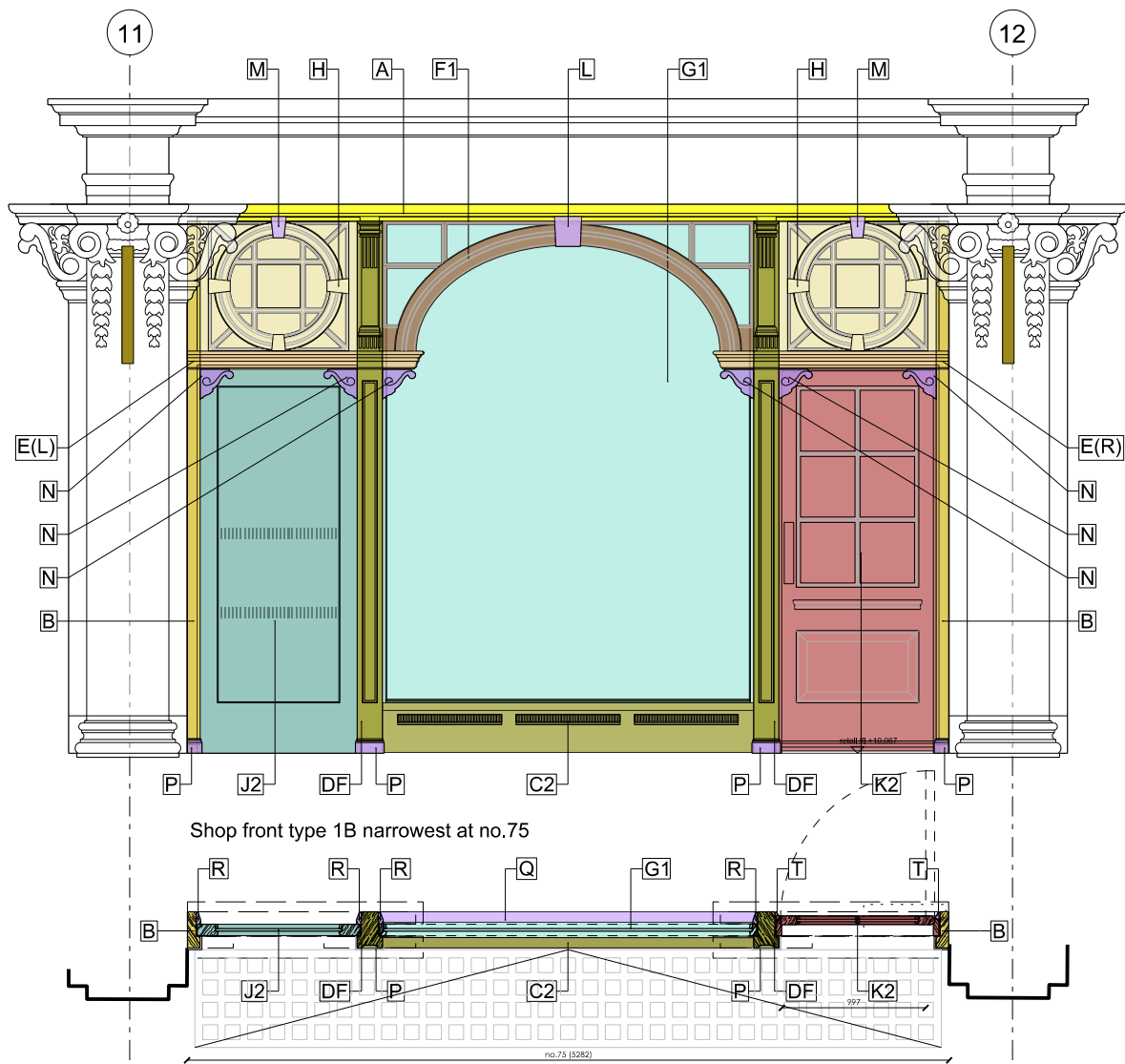
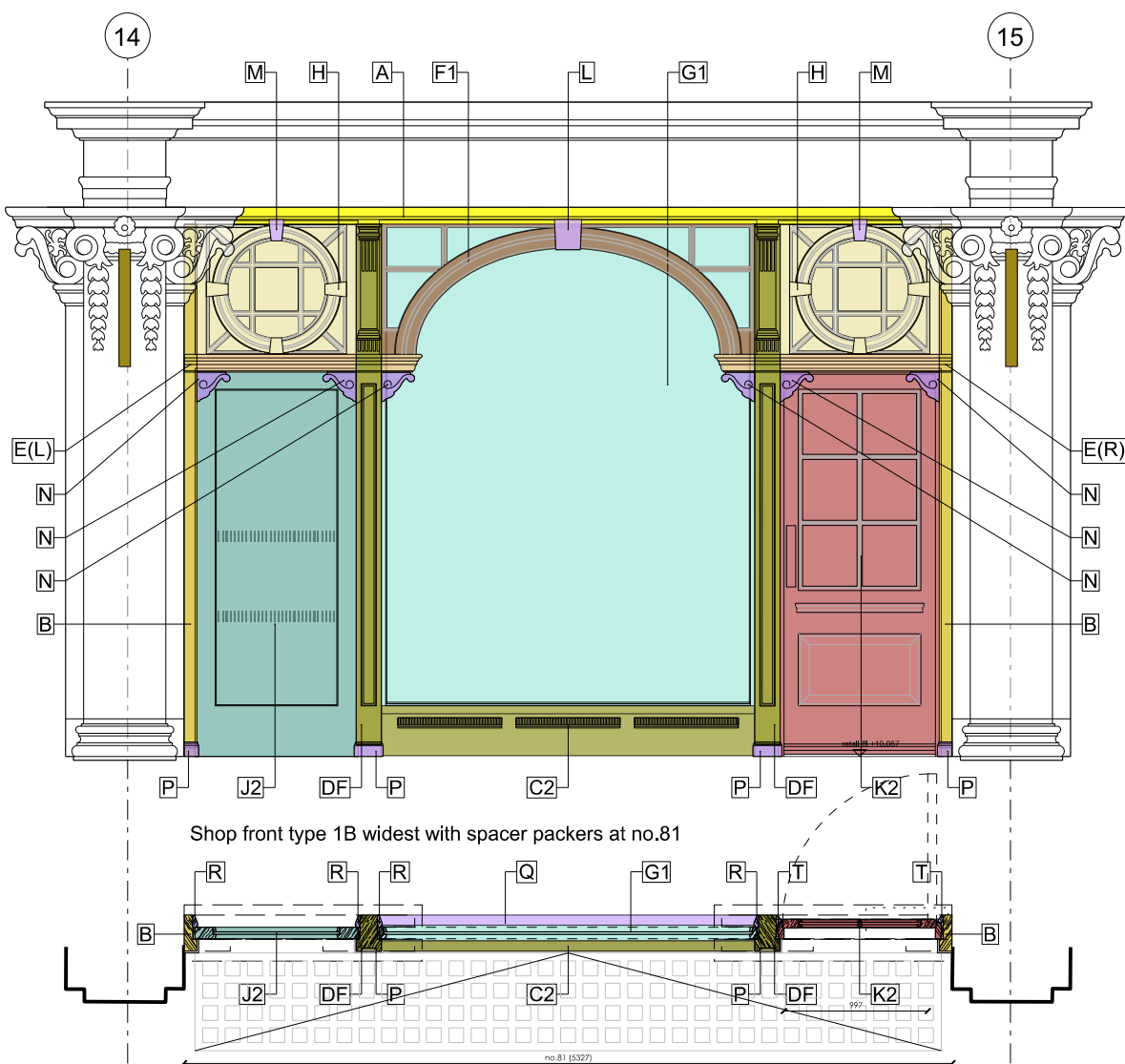
DRAWING TO BE READ IN CONJUNCTION WITH ALL OTHER ARCHITECTS' AND ENGINEERS' CONTRACT DRAWING & SPECIFICATIONS. ANY DISCREPANCIES MUST BE BROUGHT TO THE ATTENTION OF THE ARCHITECT IMMEDIATELY. THE CONTRACTOR MUST VERIFY ALL DIMENSIONS BY SITE MEASUREMENT BEFORE ORDERING MATERIALS OR MANUFACTURING COMPONENTS. SUBSTITUTION OF MATERIALS & PRODUCTS TO THOSE NAMED WILL BE ACCEPTABLE IF PROVEN TO BE OF EQUAL OR HIGHER PERFORMANCE AND NOT IN CONFLICT WITH OTHER ELEMENTS.

NOTES:



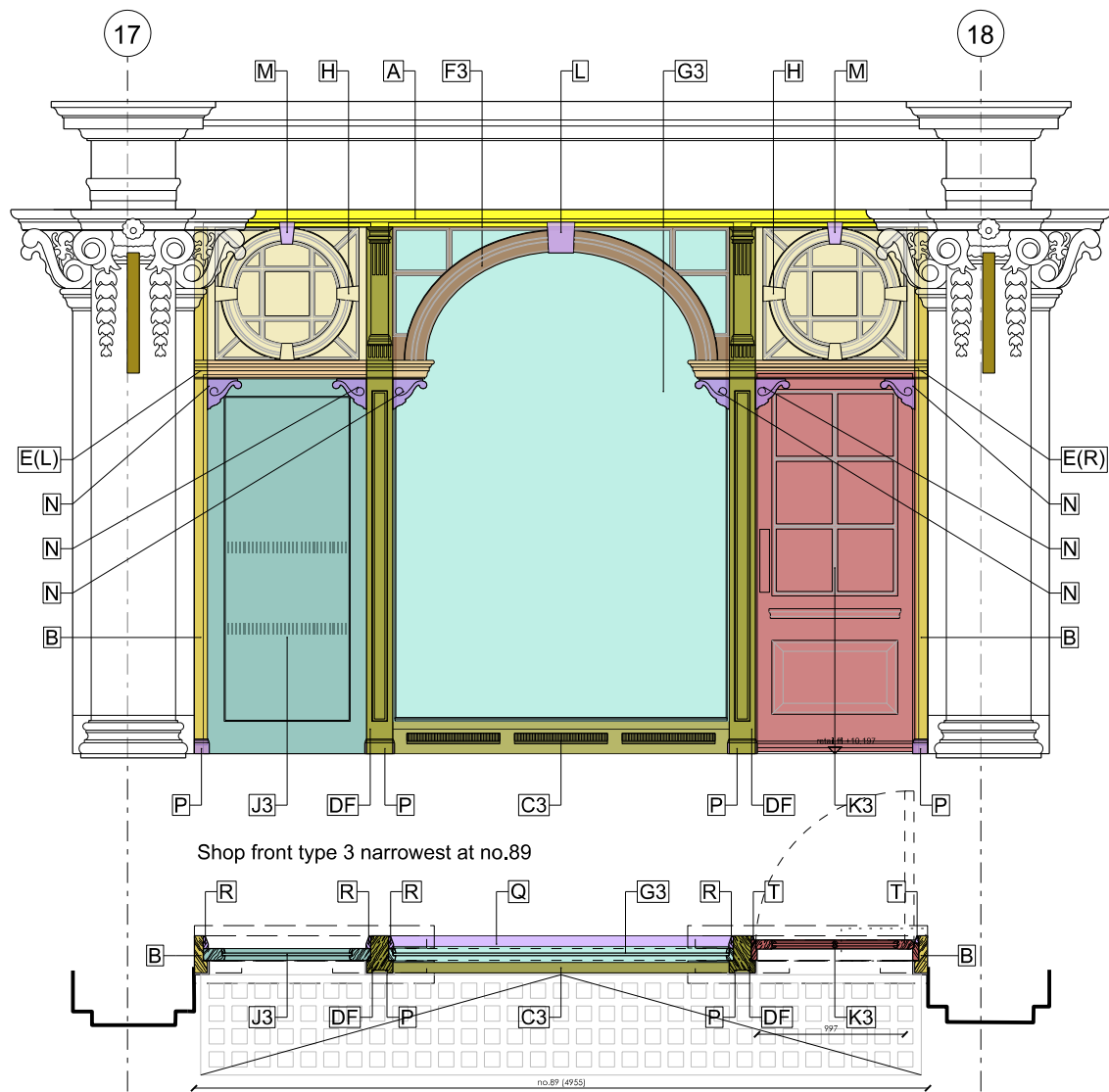
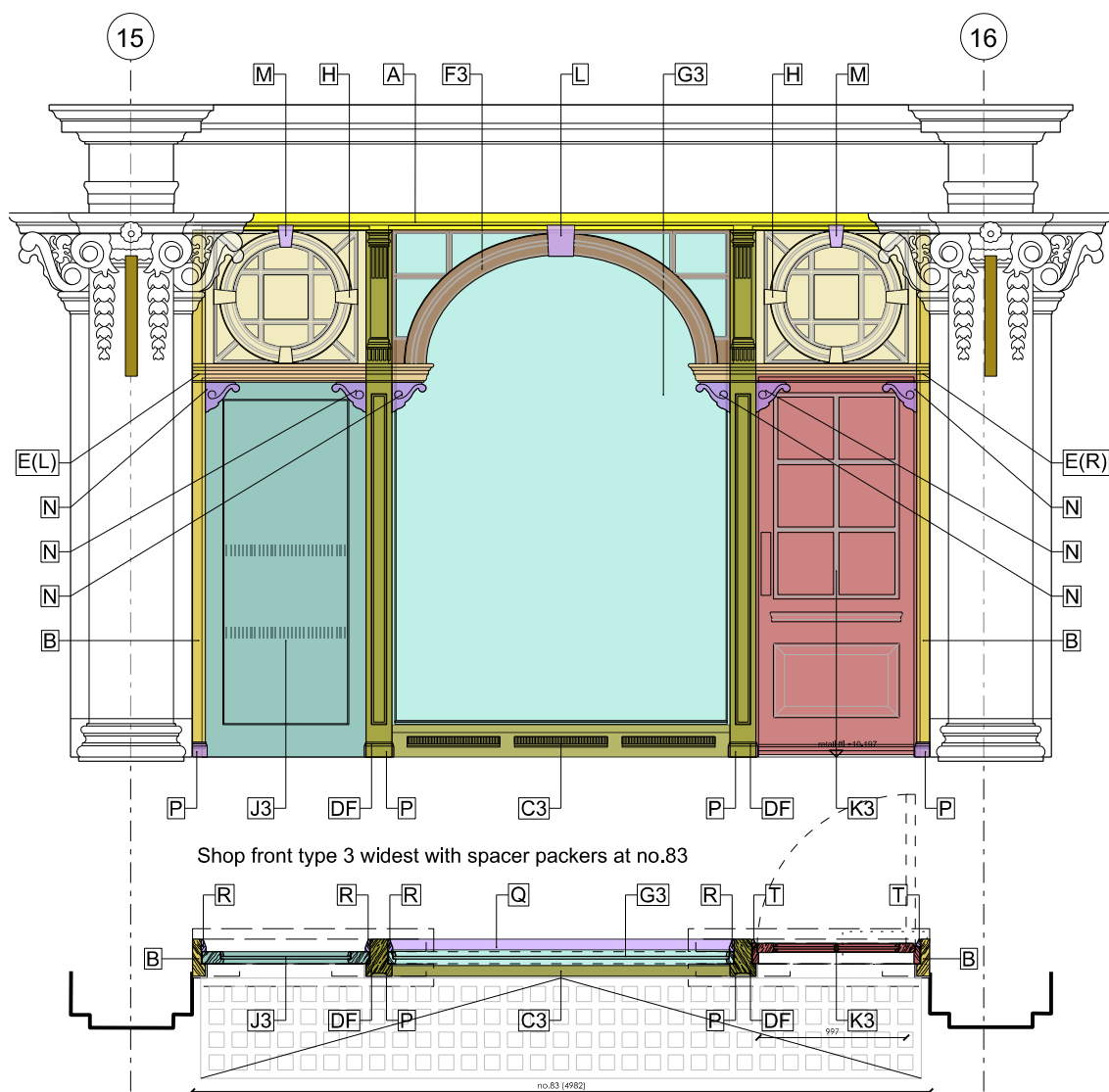
Shopfront type 1A

no.57 (5286)
no.59 (5288)
no.61 (5266)
no.63 (5307)
no.65 (5242)
no.67 (5302)
no.69 (5314)



Shopfront type 1B

no.75 (5282)
no.77 (5303)
no.79 (5312)
no.81 (5327)

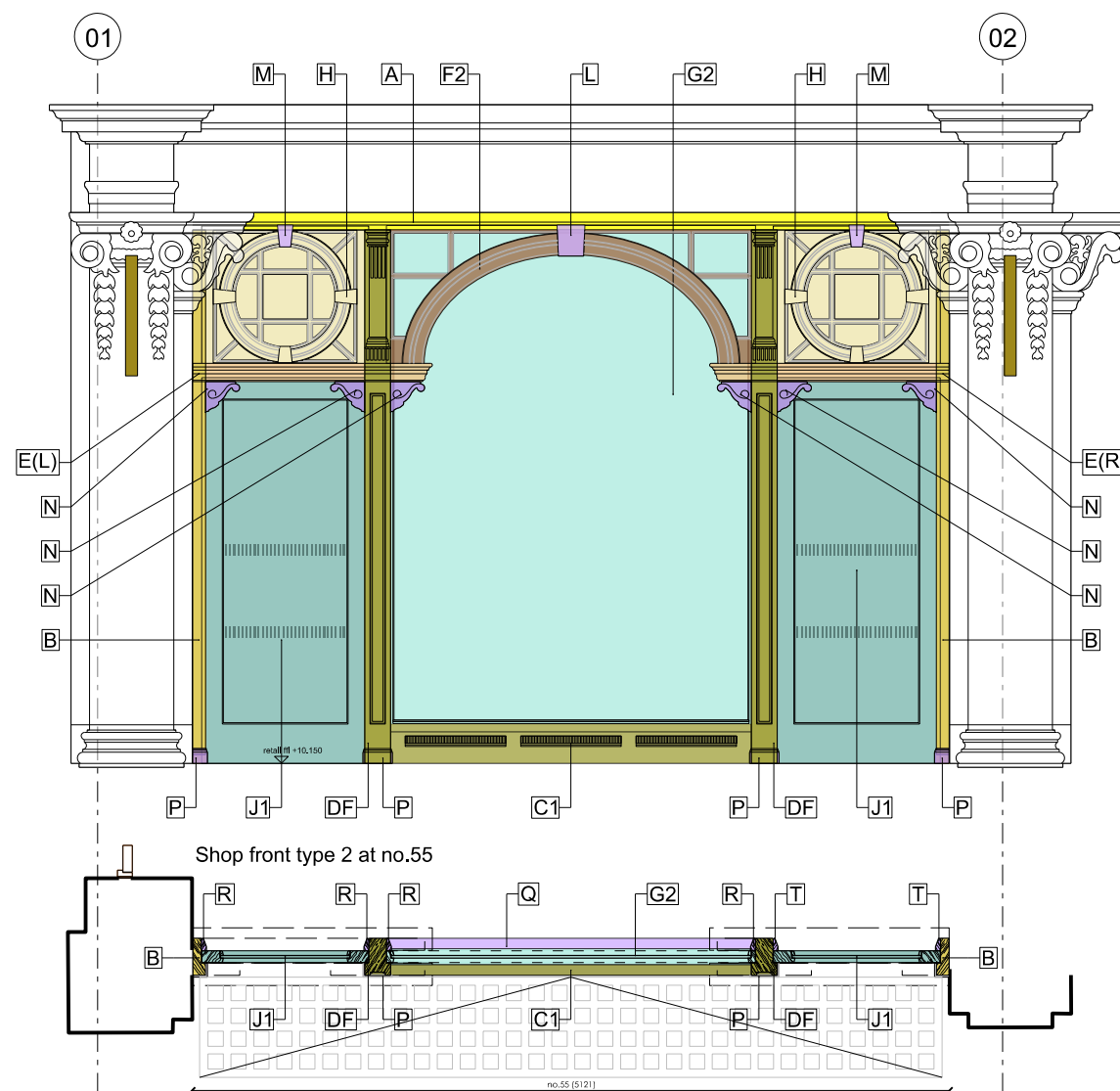


Shopfront type 3

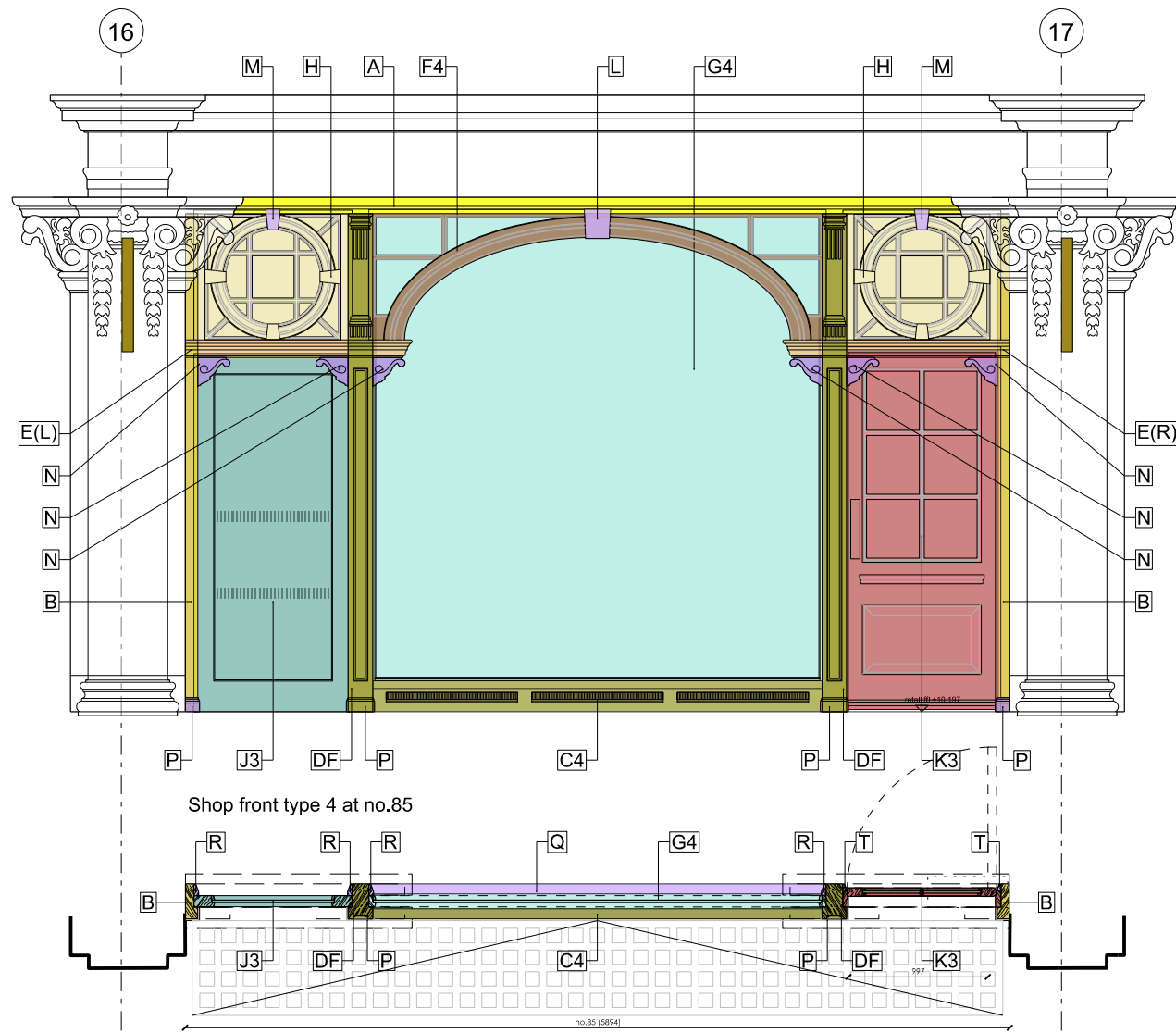
- Standardised components:
- A Top rail cut to fit varying opening widths
  - B Side jamb cut to fit 4 opening heights
  - C Stallriser plinth (number denotes width type)
  - DF Fluted post with bottom end cut to fit 3 opening heights
  - DP Plain post with bottom end cut to fit 2 opening heights
  - E Transom (L and R denotes handing) cut to fit
  - F Arch (number denotes type)
  - G Structural glazing (number denotes width type)
  - H Ocular fan light unit
  - J Side light unit (number denotes height type)
  - K Door set unit (number denotes height type) with bronze push plate to exterior, Pool Waite Optimus Traditional pull handle on face fixing backplate to interior & floor mounted Tormax iMotion 1401 powered swing door drive unit
  - L Plant-on fan light timber keystone
  - M Plant-on arch timber keystone
  - N Plant-on bracket
  - P Exterior skirting cut to fit
  - Q Plinth curved cill cut to fit
  - R Plant-on reveal with shadow gap cut to fit
  - S Packing narrow cover strip cut to fit
- Note: packers to adjust units C, G, J, K & H between posts D on site

Bespoke carpentry component:

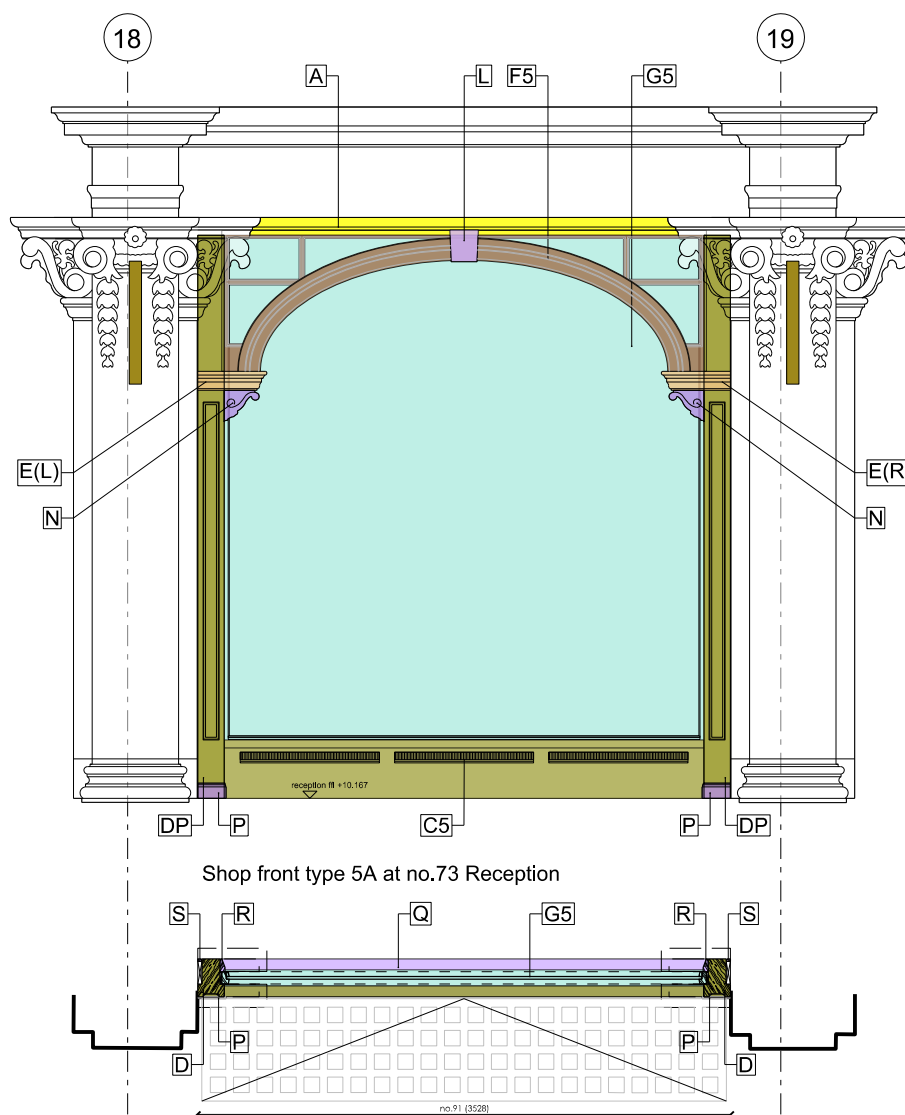
- T Anti-finger trap rebated splayed architrave, bespoke to every door to maintain shadow gap.



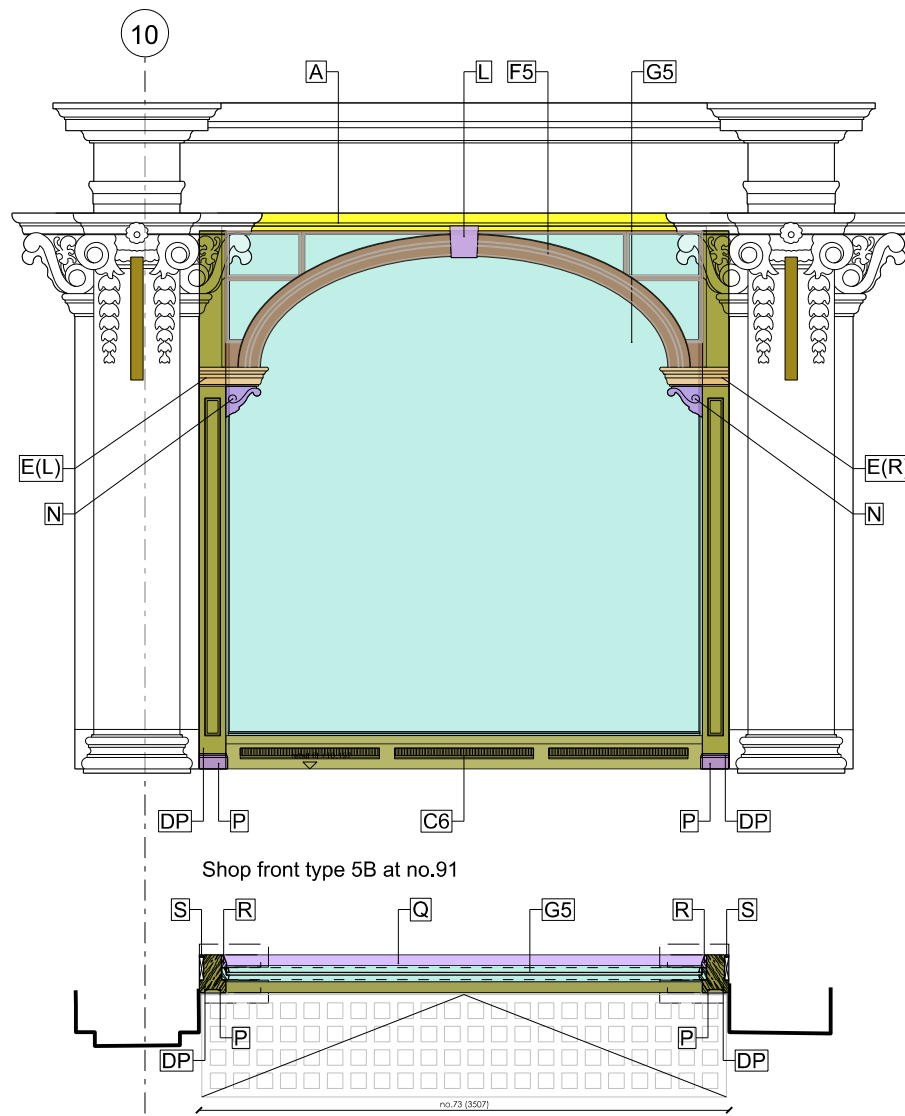
Shopfront type 2



Shopfront type 4



Shopfront type 5A



Shopfront type 5B

A 20.05.12 Opening widths updated based on surveyor's 3D model & type developed as component  
11.05.15 for comment

for comment

JOB TITLE	55-91 Knightsbridge
DRAWING TITLE	Shopfronts Elevation Proposal
JOB NO.	488
DWG NO.	SK125
REV	A
DESIGNED BY	JM
SCALE	1:50@A1
DATE	11.05.15

**RICHARD GRIFFITHS ARCHITECTS**  
Do not scale this drawing use figured dimensions only, if in doubt ask. Copyright RGA  
5 Maitland Mews, 72-76 Borough High Street, London SE1 1GN  
0207 357 8788 www.rgarchitects.com