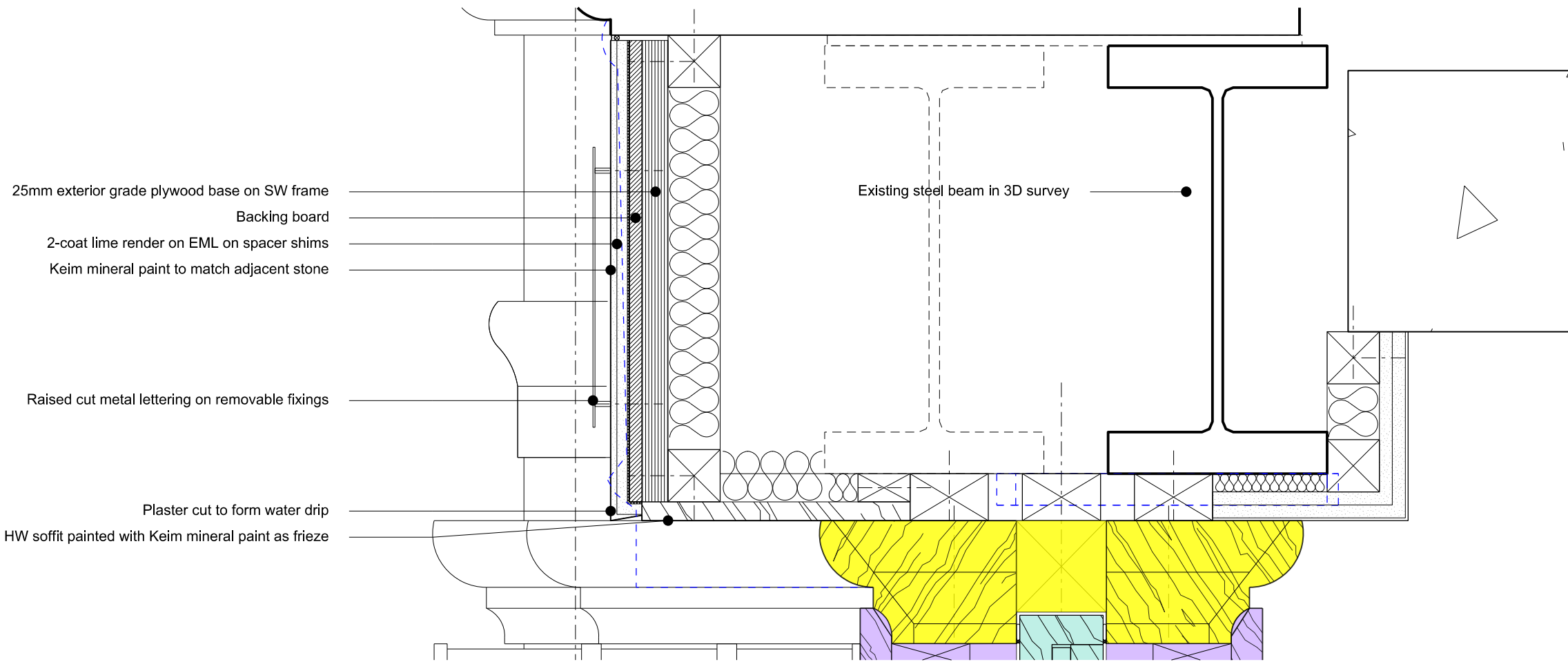
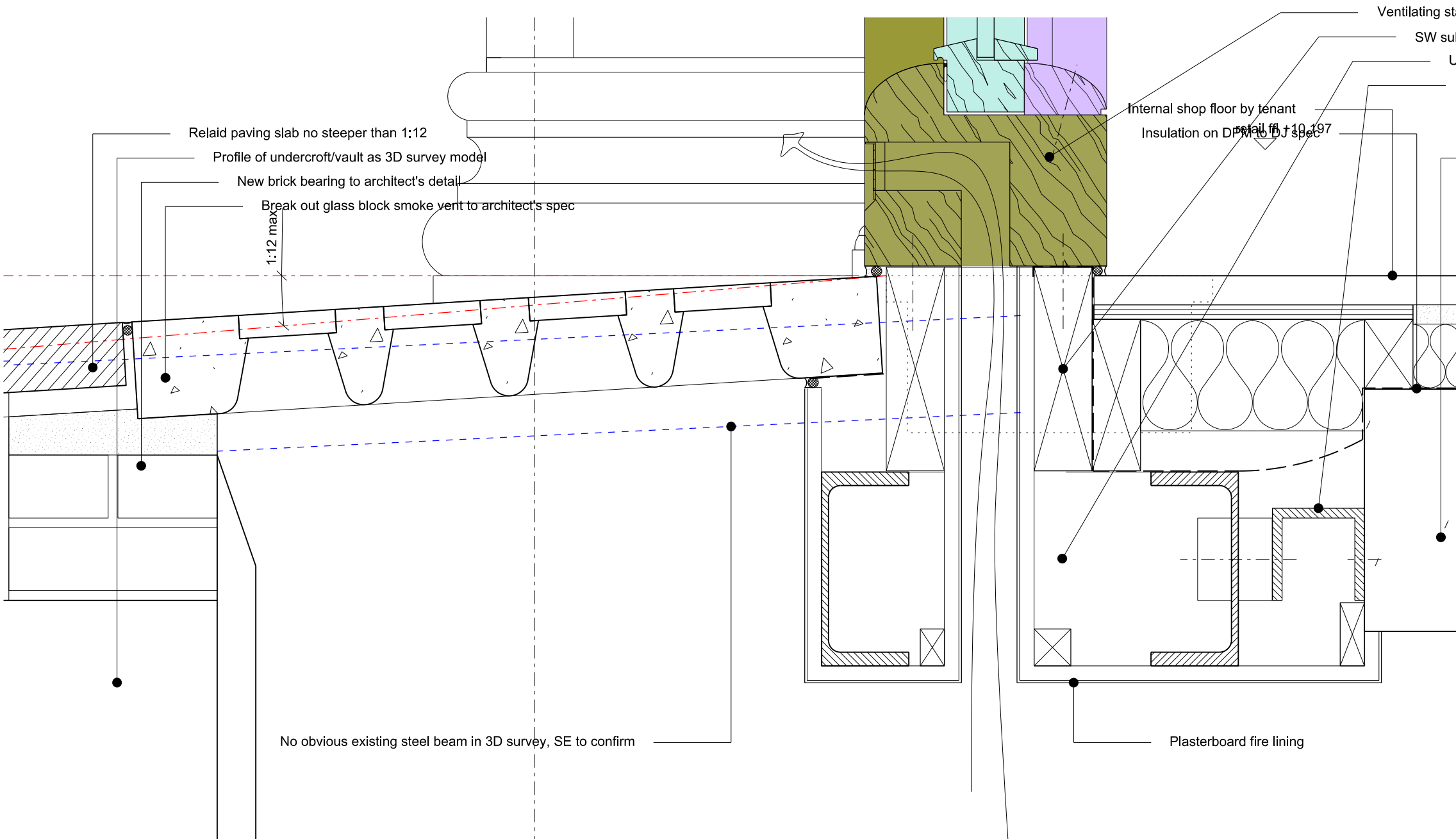


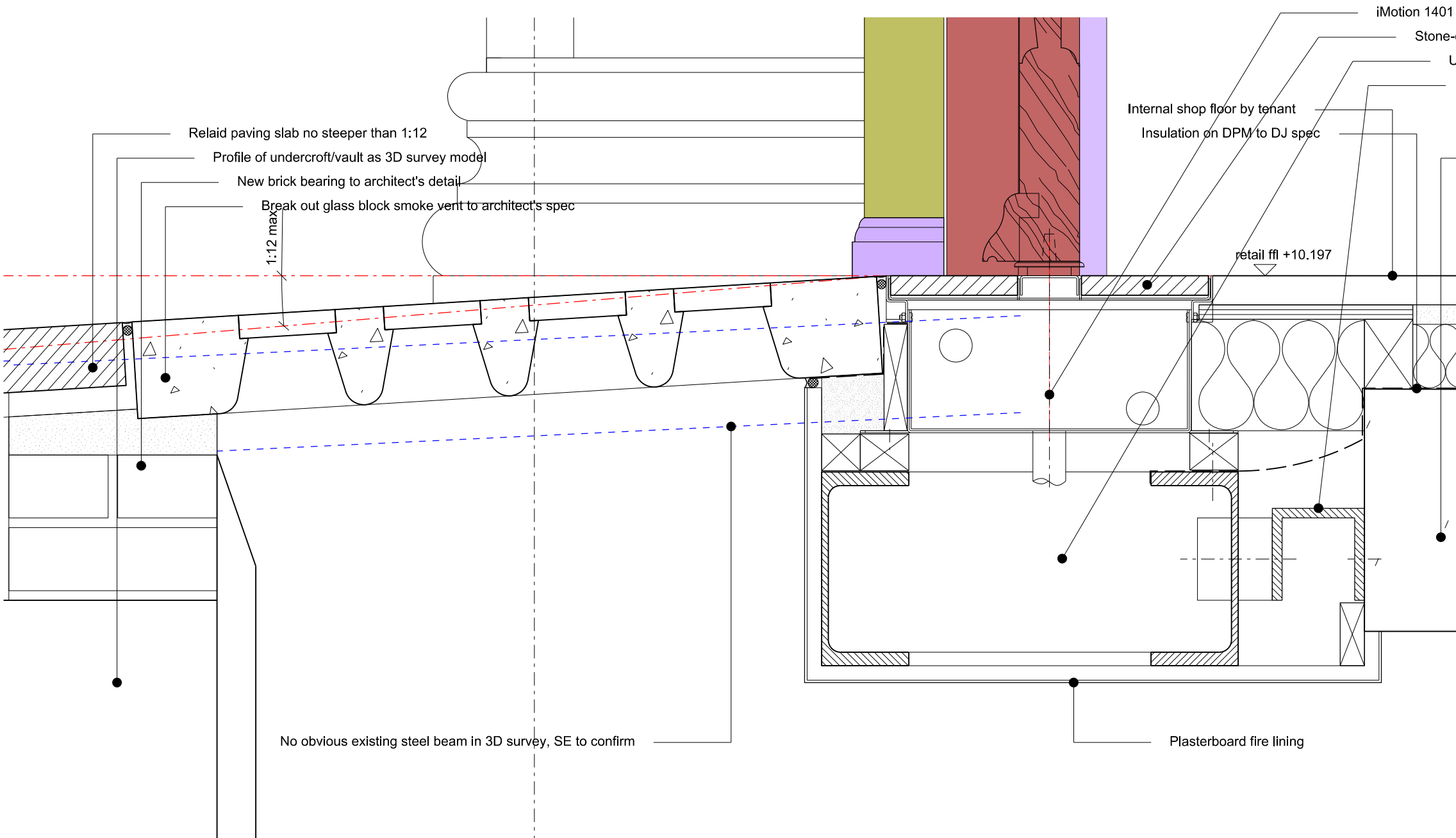
Shopfront type	1A	1B	2	3	4	5A	5B
FFL	+10.150	+10.067	+10.150	+10.197	+10.197	+10.030	+10.197
Quantity	7	4	1	2	1	1	1



A. Common section through entablature frieze



B. Section through shop window with FFL +10.197 at no.83

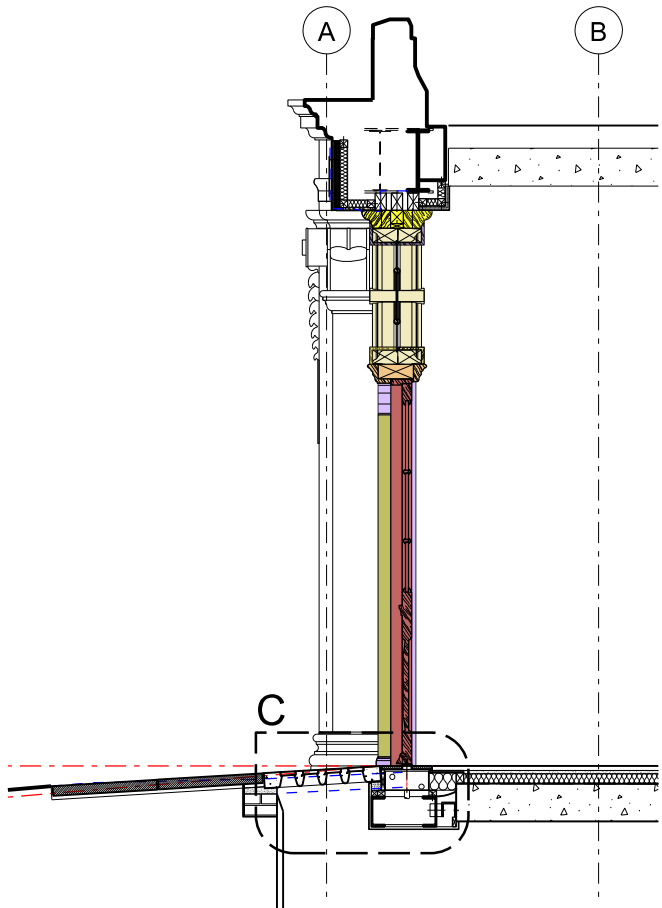
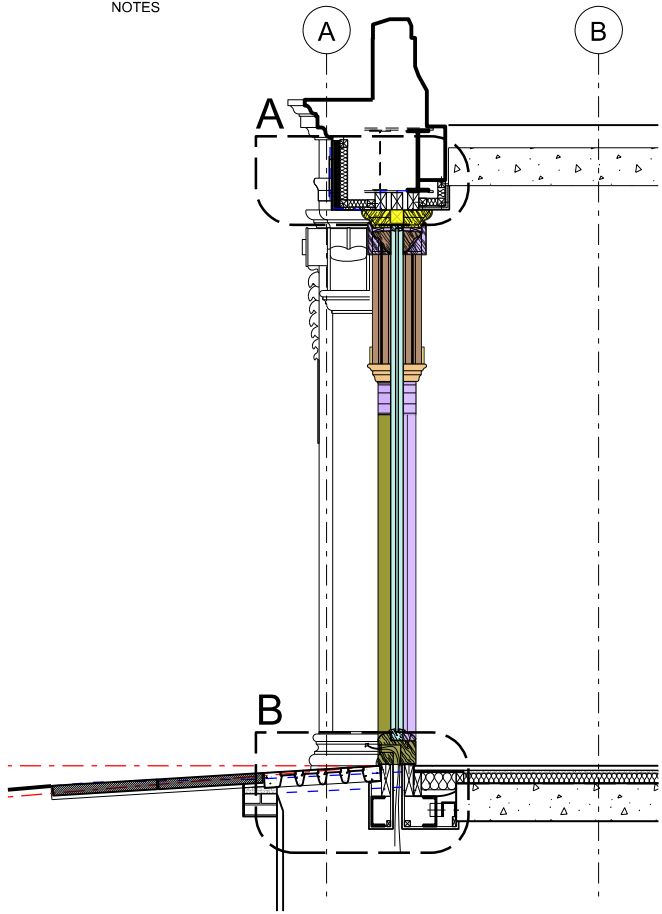


C. Section through door threshold with FFL +10.197 at no.83

DO NOT SCALE FROM THIS DRAWING

DRAWING TO BE READ IN CONJUNCTION WITH ALL OTHER ARCHITECTS AND ENGINEER'S CONTRACT DRAWING & SPECIFICATIONS. ANY DISCREPANCIES MUST BE BROUGHT TO THE ATTENTION OF THE ARCHITECT IMMEDIATELY. THE CONTRACTOR MUST VERIFY ALL DIMENSIONS BY SITE MEASUREMENT BEFORE ORDERING MATERIALS OR MANUFACTURING COMPONENTS. SUBSTITUTE MATERIALS & PRODUCTS TO THOSE NAMED WILL BE ACCEPTABLE IF PROVEN TO BE OF EQUAL OR HIGHER PERFORMANCE AND NOT IN CONFLICT WITH OTHER ELEMENTS.

NOTES



/ 28.09.18 Issued for comment

comment

JOB TITLE
55-91 Knightsbridge

DRAWING TITLE
Knightsbridge shopfront details for types at FFL+10.197

JOB NO. 488

DWG NO. SK363

REV /

DRAWN BY NJ

SCALE 1:5 @ A2

DATE 28.09.18

RICHARD GRIFFITHS ARCHITECTS
Do not scale this drawing use figured dimensions only. If in doubt ask. Copyright RGA
5 Maidstone Mews, 72-76 Borough High Street, London SE1 1GN
0207 357 8788 www.rgarchitects.com