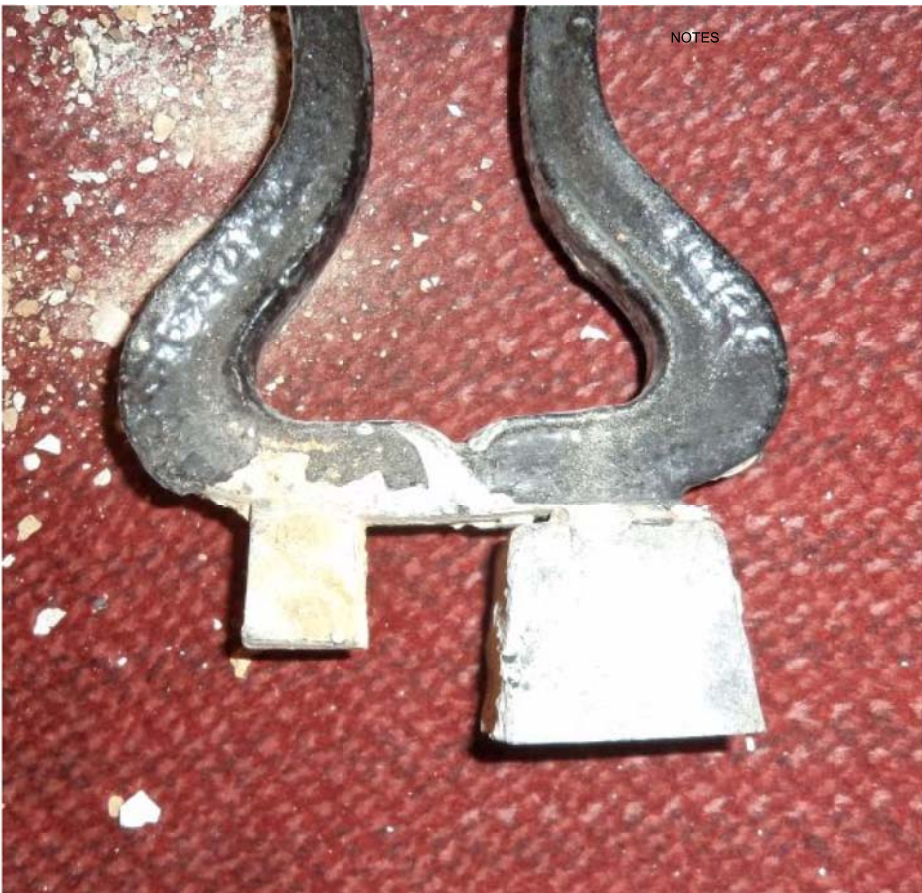




baluster adjustable fixings to handrail



tongues let into metal housing set in concrete step



hardwood handrail



balusters



brass rod

balusters, stair rods and fixing components to be removed carefully for re-use in facsimile stairs

sections of hardwood handrail may be salvaged for re-use in new handrail to match extg

DO NOT SCALE FROM THIS DRAWING

DRAWING TO BE READ IN CONJUNCTION WITH ALL OTHER ARCHITECT'S AND ENGINEER'S CONTRACT DRAWING & SPECIFICATIONS. ANY DISCREPANCIES MUST BE BROUGHT TO THE ATTENTION OF THE ARCHITECT IMMEDIATELY. THE CONTRACTOR MUST VERIFY ALL DIMENSIONS BY SITE MEASUREMENT BEFORE ORDERING MATERIALS OR MANUFACTURING COMPONENTS. SUBSTITUTE MATERIALS & PRODUCTS TO THOSE NAMED WILL BE ACCEPTABLE IF PROVEN TO BE OF EQUAL OR HIGHER PERFORMANCE AND NOT IN CONFLICT WITH OTHER ELEMENTS.

NOTES

A 20/07/15 E1 tender
REV DATE DETAILS

E1 tender

JOB TITLE
55-91 KNIGHTSBRIDGE

DRAWING TITLE
existing baluster construction

JOB NO.	DWG NO.	REV
488	A102	A
DRAWN BY	SCALE	DATE
JM	n/a	July 15

RICHARD GRIFFITHS ARCHITECTS
Do not scale this drawing use figured dimensions only. If in doubt ask. Copyright RGA
5 Maidstone Mews, 72 -76 Borough High Street, London SE1 1GN
0207 357 8788 www.rgarchitects.com