

Balustrade Type Key:

- Type 03
Barriers for gangways of seating decks aligned at right angles to the direction of spectator movement. Min height 1100mm with 3.0kN/m length horizontal imposed load
- Type 04
Barriers for gangways of seating decks, parallel to the direction of spectator movement, including barriers used for segregation. Min height 1100mm high with 2.0kN/m length horizontal imposed load
- Type 05
Barriers for seating decks adjacent end row of seats protecting spectators from falling sideways. Min height 1100mm high with 1.0kN/m length horizontal imposed load
- Type 06
Barriers for seating decks behind rear row of seats protecting spectators from falling backwards. Min height 1100mm high with 1.0kN/m length horizontal imposed load
- Type 07
Barriers positioned within 530mm in front of seating. Min height 800mm high with 1.5kN/m length horizontal imposed load
- Type 08
Barriers for stairways, landings and ramps aligned at right angles to spectator movement. Min height 1100mm high with 3.0kN/m length horizontal imposed load
- Type 09
Barriers for stairways, landings and ramps aligned with direction spectator movement. Min height 1100mm high with 2.0kN/m length horizontal imposed load
- Type 10
Barriers for gangways in standing areas, aligned at right angles to direction of spectator movement. 2.0kN/m length horizontal imposed load.
- Type 13
Separating elements such as walls and barriers in spectator areas, boundary walls, fences, doors and gates. 2.0-3.0kN/m length horizontal imposed load at a 1100mm designed height.

See DR-1539 to DR-1543 for Metal Balustrade Scope
See DR-1544 to DR-1547 for Glass Balustrade Scope
Read in conjunction with the L32 (Balustrades/Handrails) & Q41 (Barriers/Guardrails) Specification

C03 Revision 27/09/2019:

- Lower Tier Loading requirements updated to align with VE design changes.
- Staircases Balustrades simplified to same loading.
- Back of Bowl Upper Tier Balustrade Loading

01 Level 01 Plan - Balustrade Loading Scope
1 : 250

1	28/02/2019	Issued for Stage 4a Tender	NOH	SW
C01	30/08/2019	Issued for Construction	NOH	SW
C02	13/09/2019	Issued for Construction	NOH	SW
C03	27/09/2019	Issued for Construction	NOH	SW
Rev	Date	Description	Drawn By	Approved

Do not scale. Use figured dimensions only. All dimensions to be checked on site

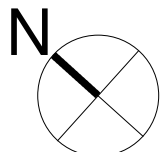
All drawings to be read in conjunction with the engineers' drawings.

Any discrepancies between consultants drawings to be reported to the architect before any work commences.

The contractor's attention is drawn to the Health & Safety matters identified in the Health & Safety plan as being potentially hazardous.

These items should not be considered as a complete and final list.

The work package contractor's normal Health & Safety obligations still apply when undertaking constructional operations both on and off site.



FOR CONSTRUCTION

Issue Status



LORD'S
THE HOME OF CRICKET

WilkinsonEyre

Wilkinson Eyre Architects
33 Bowling Green Lane, London
EC1R 1SL, United Kingdom

+44 (0) 20 7608 7900 T
+44 (0) 20 7608 7901 F
www.wilkinsoneyre.com

Project
01436 - Lords Compton & Edrich Stands
Drawing Title
Level 01 - Balustrade Loading Types

Scale at A1
1 : 250

Drawing
LCAES - WEA - XX - 01 - DR - A - 1548

Rev
C03